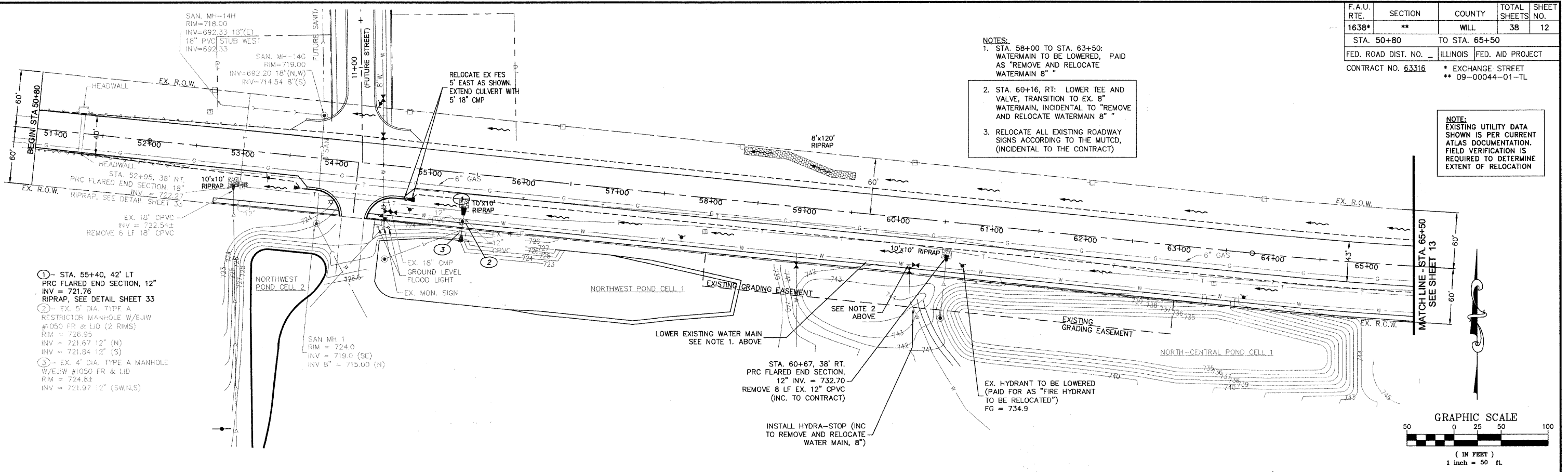


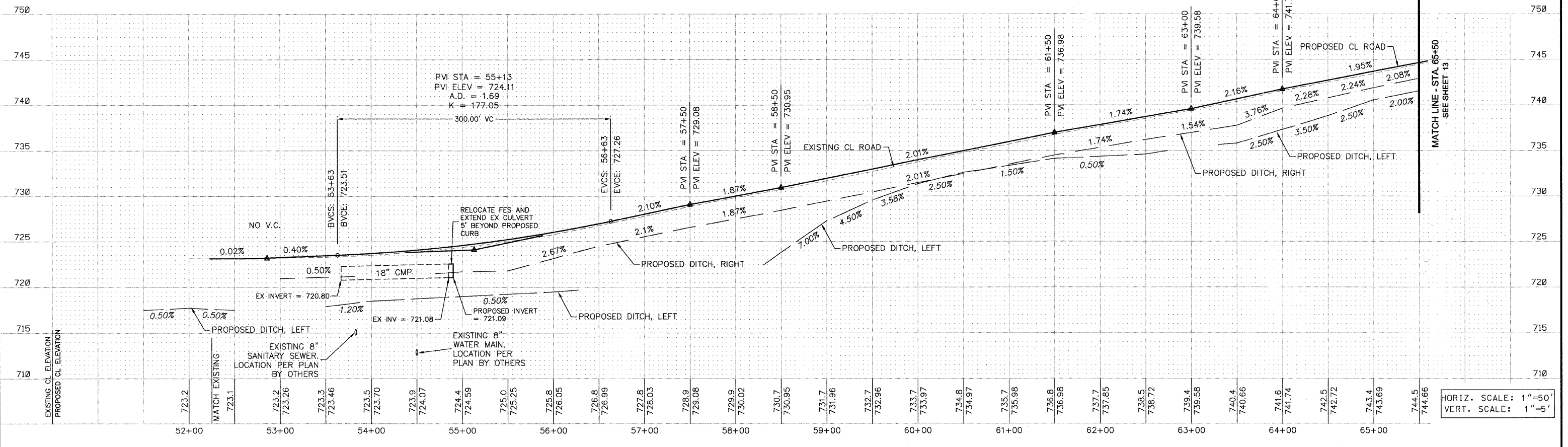
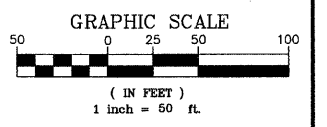
F.A.U. RTE.	SECTION	COUNTY	TOTAL SHEETS	SHEET NO.
1638*	**	WILL	38	12
STA. 50+80		TO STA. 65+50		
FED. ROAD DIST. NO. -		ILLINOIS FED. AID PROJECT		
CONTRACT NO. 63316		* EXCHANGE STREET ** 09-00044-01-TL		

- NOTES:**
- STA. 58+00 TO STA. 63+50: WATERMAIN TO BE LOWERED, PAID AS "REMOVE AND RELOCATE WATERMAIN 8"
 - STA. 60+16, RT: LOWER TEE AND VALVE, TRANSITION TO EX. 8" WATERMAIN, INCIDENTAL TO "REMOVE AND RELOCATE WATERMAIN 8"
 - RELOCATE ALL EXISTING ROADWAY SIGNS ACCORDING TO THE MUTCD, (INCIDENTAL TO THE CONTRACT)

NOTE:
EXISTING UTILITY DATA SHOWN IS PER CURRENT ATLAS DOCUMENTATION. FIELD VERIFICATION IS REQUIRED TO DETERMINE EXTENT OF RELOCATION



- STA. 55+40, 42' LT. PRC FLARED END SECTION, 12" INV = 721.76 RIPRAP, SEE DETAIL SHEET 33
- EX. 5" DIA. TYPE A RESTRICTOR MANHOLE W/E&W #050 FR & LID (2 RIMS) RIM = 726.95 INV = 721.67 12" (N) INV = 721.84 12" (S)
- EX. 4" DIA. TYPE A MANHOLE W/E&W #1050 FR & LID RIM = 724.84 INV = 721.97 12" (S.W.N.S)



HORIZ. SCALE: 1"=50'
VERT. SCALE: 1"=5'

REVISIONS		
NO.	NAME	DATE
1	PER IDOT	8-13-09
2	PER IDOT	10-29-09

M^CBRIDE ENGINEERING, INC.
CIVIL ENGINEERS & SURVEYORS
ILLINOIS PROFESSIONAL DESIGN FIRM #184-000803

CORPORATE: 3645 W. 183rd Street Suite 124 Hazel Crest, IL 60429-2409 708-799-1350
ARLINGTON HEIGHTS DIVISION: 320 S. Belmont Avenue Arlington Heights, IL 60005-2038 847-394-4810

MEI PROJECT: 04119.806 SCALE: 1"=50'

VILLAGE OF CRETE
EXCHANGE STREET IMPROVEMENTS
CRETE, WILL COUNTY, ILLINOIS

UTILITY PLAN - EXCHANGE STREET

DATE: 7-3-09
DRAWN BY: PG/ADM
CHECKED BY: LGB

M:\2004\04119.4.dwg\04119.806_PROFILES.dwg 10/29/2009 1:00:16 PM CDT