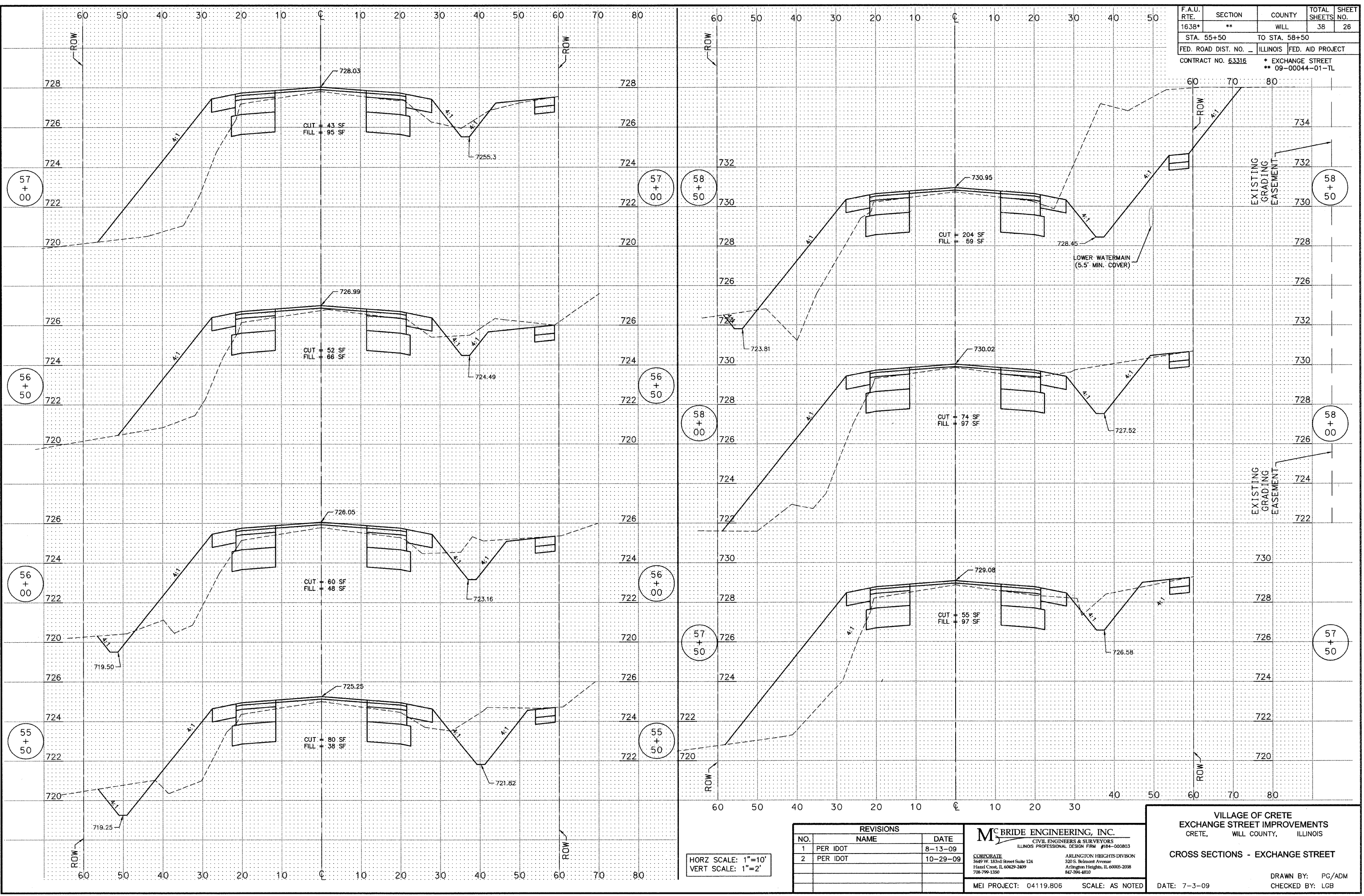


M:\2004\04119.4\dwg\04119.806\_CROSS\_SECTIONS.dwg 10/29/2009 11:42:31 AM CDT

F.A.U. RTE.	SECTION	COUNTY	TOTAL SHEETS	SHEET NO.
1638*	**	WILL	38	26
STA. 55+50		TO STA. 58+50		
FED. ROAD DIST. NO. _		ILLINOIS	FED. AID PROJECT	
CONTRACT NO. 63316		* EXCHANGE STREET ** 09-00044-01-TL		



HORZ SCALE: 1"=10'  
VERT SCALE: 1"=2'

REVISIONS		
NO.	NAME	DATE
1	PER IDOT	8-13-09
2	PER IDOT	10-29-09

**McBRIDE ENGINEERING, INC.**  
 CIVIL ENGINEERS & SURVEYORS  
 ILLINOIS PROFESSIONAL DESIGN FIRM #184-000803  
 CORPORATE: 3649 W. 183rd Street Suite 124, Hazel Crest, IL 60429-2409, 708-999-1350  
 ARLINGTON HEIGHTS DIVISION: 320 S. Belmont Avenue, Arlington Heights, IL 60005-2038, 847-394-4810  
 MEI PROJECT: 04119.806 SCALE: AS NOTED

VILLAGE OF CRETE  
 EXCHANGE STREET IMPROVEMENTS  
 CRETE, WILL COUNTY, ILLINOIS  
 CROSS SECTIONS - EXCHANGE STREET  
 DATE: 7-3-09  
 DRAWN BY: PG/ADM  
 CHECKED BY: LGB