

PROPOSED SEQUENCE OF OPERATION

PHASE	2				4				Fig.
MOVEMENT	P				P				
INTERVAL	#1	2	3	4	#5	6	7	8	
CHANGE TO				4				2	
CHICAGO AVE. SIGNALS	G	G	Y	R	R	R	R	R	R
142ND ST. SIGNALS	R	R	R	R	G	G	Y	R	R
PEDESTRIAN SIGNALS ACROSS 142ND ST.	W	Flg. DW #1	DW	DW	DW	DW	DW	DW	DARK
PEDESTRIAN SIGNALS ACROSS CHICAGO RD.	DW	DW	DW	DW	W	Flg. DW #2	DW	DW	DARK

PHASES 2 & 4 SHALL HAVE NON-LOCKING MEMORY

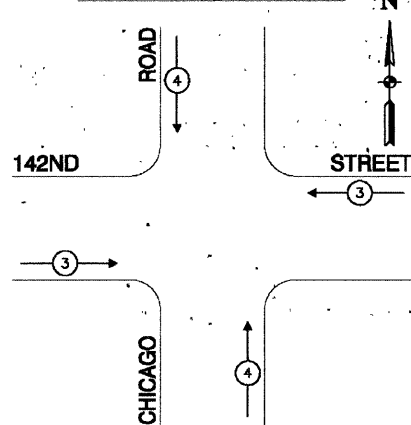
TO APPEAR ON PEDESTRIAN ACTUATION ONLY

** FLASHING "DON'T WALK" SHALL TERMINATE AT COMPLETION OF PEDESTRIAN CLEARANCE INTERVAL. A STEADY "DON'T WALK" SHALL APPEAR IN THE ABSENCE OF PEDESTRIAN ACTUATION.

GENERAL NOTES

- ALL DETECTOR LOOPS SHALL CONSIST OF THE NUMBER OF TURNS AS RECOMMENDED BY THE MANUFACTURER. DETECTOR LOOPS AND LEAD-IN WIRING SHALL BE INSTALLED IN STRICT CONFORMITY WITH THE MANUFACTURER'S RECOMMENDATIONS.
- THE 2/C NO. 12 SHIELDED CABLE TO BE USED FOR THE DETECTOR LOOP LEAD-IN SHALL BE MEASURED FROM THE SPLICE TO THE CONTROLLER AS SPECIFIED IN SECTION 1421.04 OF THE STANDARD SPECIFICATIONS FOR TRAFFIC CONTROL ITEMS EXCEPT NO SLACK SHALL BE ALLOWED. THE DETECTOR LOOP SHALL BE MEASURED FOR THAT PORTION OF SAW CUT BEYOND THE SPLICE AS SPECIFIED IN SECTION 1418.04 OF THE STANDARD SPECIFICATIONS FOR TRAFFIC CONTROL ITEMS. FLAT CABLE WILL NOT BE PERMITTED.
- ALL POST MOUNTED SIGNALS SHALL BE BRACKET MOUNTED.
- ELECTRIC CABLE THAT IS FURNISHED BY THE CONTRACTOR SHALL BE PROTECTED BY POLYETHYLENE INSULATION WITH A POLYVINYLCHLORIDE JACKET, UNLESS OTHERWISE SPECIFIED.
- THE REMOVAL AND REPLACEMENT OF SIDEWALK, DRIVEWAY, MEDIAN AND ISLAND SURFACE PAVING AT HANDHOLES, JACKING PITS, INSPECTION OPENINGS AND CONCRETE JUNCTION BOXES SHALL BE INCIDENTAL TO THE CONTRACT AND NO SEPARATE PAYMENT WILL BE MADE. REPLACEMENT SHALL BE MADE WITH A LIKE MATERIAL OF A LIKE THICKNESS TO THE EXISTING SURFACE.

EMERGENCY VEHICLE PREEMPTION SEQUENCE



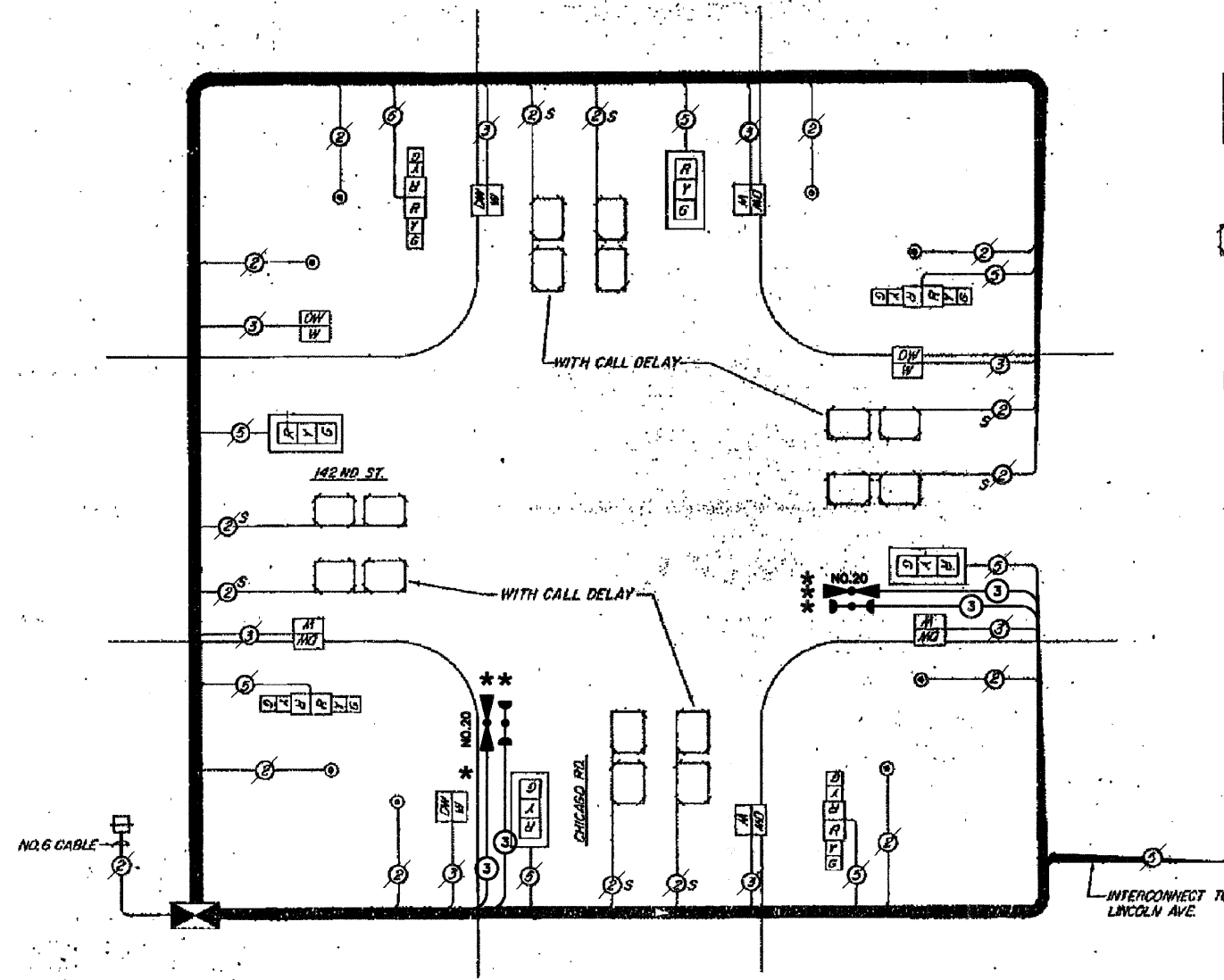
PROPOSED EMERGENCY VEHICLE PREEMPTORS	
EMERGENCY VEHICLE PREEMPTORS	3 4
MOVEMENT	← → ↑ ↓

PROPOSED SCHEDULE OF TRAFFIC SIGNAL HEADS

- 4 EACH SIGNAL HEAD, ALUMINUM, 2-FACE, 3-SECTION WITH 12" RED LENSES, BRAC MOUNTED
- 4 EACH SIGNAL HEAD, ALUMINUM, 1-FACE, 3-SECTION WITH 12" LENSES, MAST ARM MOUNTED
- 8 EACH PEDESTRIAN SIGNAL HEAD, ALUMINUM, 1-FACE, 2-SECTION WITH 12" LENSES, BRACKET MOUNTED

LEGEND

- R 12" TRAFFIC SIGNAL SECTION
- G 6" TRAFFIC SIGNAL SECTION
- P Y G SIGNAL HEAD WITH BACKPLATE
- 5 DENOTES NUMBER OF CONDUCTORS, ALL NO. 12 UNLESS OTHERWISE INDICATED
- DETECTOR LOOP
- DW PEDESTRIAN SIGNAL HEAD
- PEDESTRIAN PUSHBUTTON
- SERVICE INSTALLATION
- CONTROLLER
- S SHIELDED CABLE



CABLE DIAGRAM
NO SCALE

ALL DETECTOR LOOP LEAD-IN CABLE SHALL BE 2/C NO. 12 SHIELDED CABLE

*** SCHEDULE OF QUANTITIES**

ITEM	UNIT	QUAN
MAINTENANCE OF EXISTING TRAFFIC SIGNAL INSTALLATION	EACH	1
ELECTRIC CABLE IN CONDUIT, SIGNAL NO. 14 3C	FOOT	192
LIGHT DETECTOR	EACH	2
LIGHT DETECTOR AMPLIFIER	EACH	1
MODIFY EXISTING CONTROLLER	EACH	1
ELECTRIC CABLE IN CONDUIT NO. 20 3/C, TWISTED, SHIELDED	FOOT	192

* THIS PLAN IS FOR THE PURPOSE OF INSTALLING EMERGENCY VEHICLE PREEMPTION EQUIPMENT AS SHOWN PER PLAN INDICATED IN THE SCHEDULE OF QUANTITIES. ALL OTHER EQUIPMENT SHOWN SHALL BE DISREGARDED.

* ADDED BY PREEMPTION LOCATION NO. 9

FILE NAME = 0924-PLAN-13 - I007.P02

USER NAME	DESIGNED	REVISION
-	MRS	10-13-09 *
-	PKB	-
-	PS	-
-	AG	-

STATE OF ILLINOIS
DEPARTMENT OF TRANSPORTATION

PROPOSED EMERGENCY VEHICLE PREEMPTION
142ND STREET & CHICAGO ROAD
SCHEDULE OF QUANTITIES, CABLE PLAN, & SEQUENCE OF OPERATION

F.A.U. RTE.	SECTION	COUNTY	TOTAL SHEETS	SHEET NO.
1888/2021	09-0014-00-TL	COOK	43	28
CONTRACT NO. 63317				
FED. ROAD DIST. NO. 1 ILLINOIS FED. AID PROJECT ARA-6003(336)				