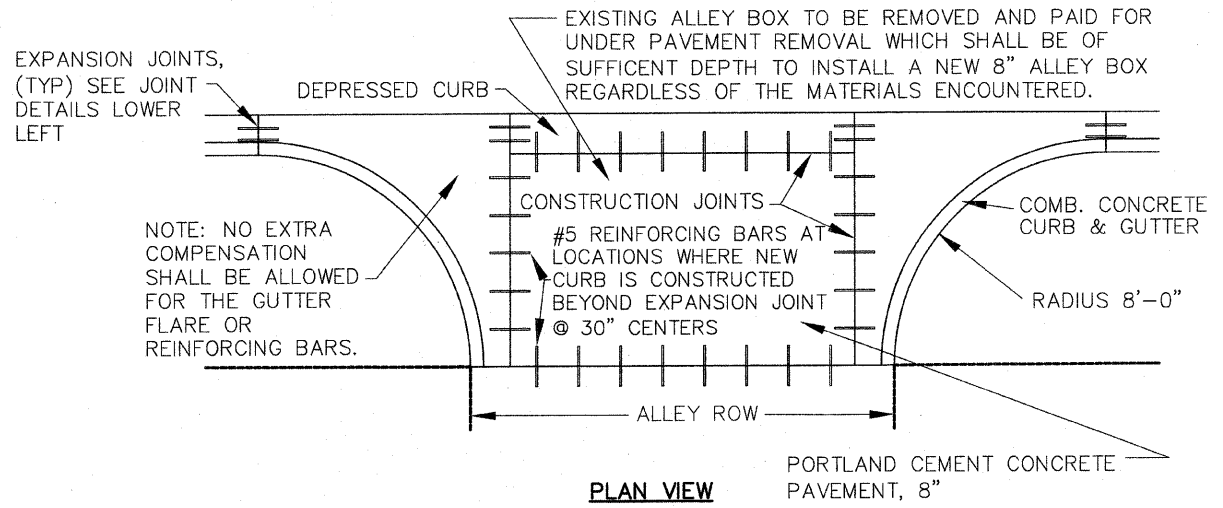


FAU RTE	SECTION	COUNTY	TOTAL SHEETS	SHEET NO.
FAU 3776	08-00088-00-RS	COOK	14	4
F.H.W.A. REG.	ILLINOIS	PROJECT	M-9003(156)	

CONTRACT NO. 63318



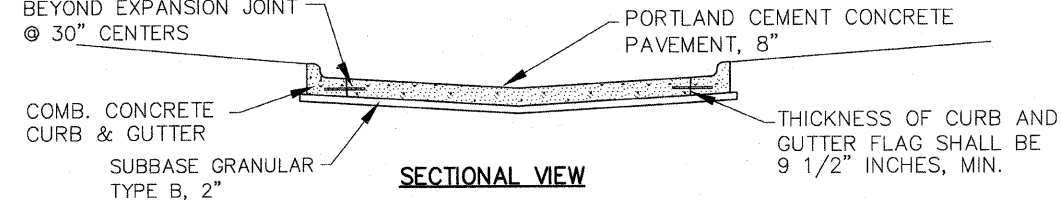
NOTE: NO EXTRA COMPENSATION SHALL BE ALLOWED FOR THE GUTTER FLARE OR REINFORCING BARS.

#5 REINFORCING BARS AT LOCATIONS WHERE NEW CURB IS CONSTRUCTED BEYOND EXPANSION JOINT @ 30" CENTERS

COMB. CONCRETE CURB & GUTTER
SUBBASE GRANULAR TYPE B, 2"

PLAN VIEW

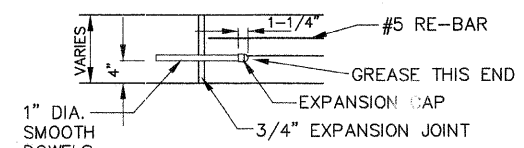
PORTLAND CEMENT CONCRETE PAVEMENT, 8"



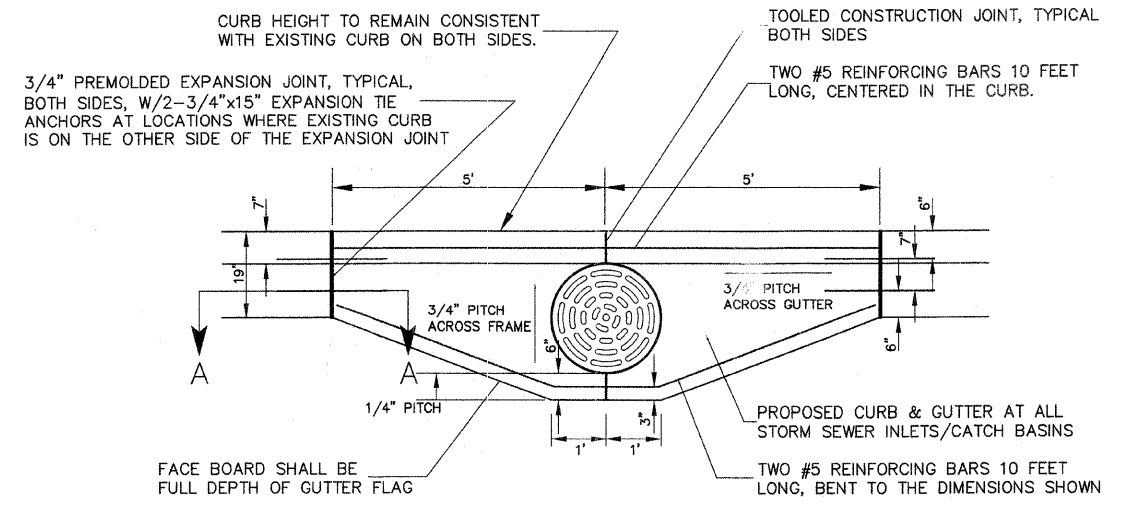
SECTIONAL VIEW

THICKNESS OF CURB AND GUTTER FLAG SHALL BE 9 1/2" INCHES, MIN.

TYPICAL ALLEY RETURN DETAIL



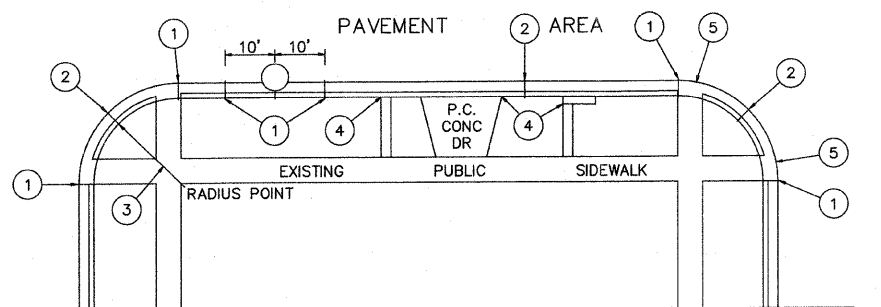
SECTION A-A
SMOOTH DOWEL DETAIL
AT EXPANSION JOINT



THE ADDITIONAL COST TO BUILD THIS GUTTER FLARE AROUND THE DRAINAGE STRUCTURE SHALL BE INCLUDED IN THE COST OF COMB. CURB AND GUTTER REMOVAL AND REPLACEMENT.

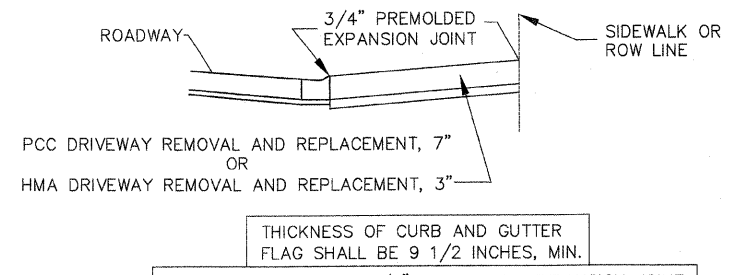
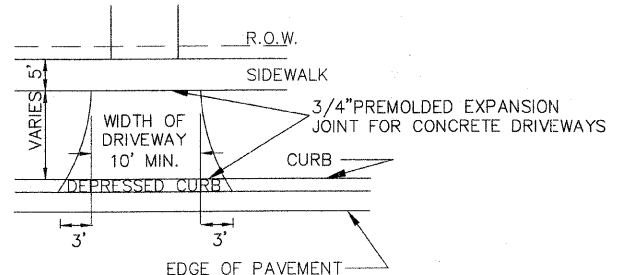
THIS GUTTER FLARE SHALL BE CONSTRUCTED AROUND CLOSED LID STRUCTURES THAT FALL IN THE CURB LINE. WHERE TWO STRUCTURES FALL IN THE CURB LINE, THE FLARE SHALL BE COMBINED.

CURB & GUTTER DETAIL AT DRAINAGE STRUCTURE



1. EXPANSION JOINTS AT TANGENT POINTS AND 150 FOOT INTERVALS, CONSISTING OF ONE INCH PREMOLDED JOINT FILLER MATERIAL WITH #8 DOWEL BARS, 18" IN LENGTH, GREASED, PROVIDE EXPANSION CAP ON ONE END. ALSO CONSTRUCT THIS JOINT TEN FEET EACH SIDE OF PROPOSED UNDERGROUND STRUCTURE.
2. CONTRACTION JOINTS AT TEN FOOT INTERVALS AND AT THE CENTER OF RETURNS.
3. ALL RADII SHALL BE 25 FEET TO THE BACK OF CURB UNLESS OTHERWISE DIRECTED BY THE ENGINEER.
4. LONGITUDINAL EXPANSION JOINT CONSISTING OF 3/4" PREMOLDED JOINT FILLER.
5. DEPRESS CURB AT LOCATIONS WHERE PUBLIC WALKS INTERSECT CURB LINE AT STREET INTERSECTIONS, ALLEYS, AND OTHER LOCATIONS AS DIRECTED, FOR THE CONSTRUCTION OF RAMPED SIDEWALKS FOR ACCESS BY THE HANDICAPPED.

JOINT DETAILS



SAWCUTTING AND THE 3/4" PREMOLDED EXPANSION JOINT WILL NOT BE PAID SEPARATELY BUT SHALL BE CONSIDERED INCIDENTAL TO PCC DRIVEWAY PAVEMENT, 7"

TYPICAL DRIVEWAY DETAIL

REVISIONS			
NO.	BY	DATE	DESCRIPTION

TYPICAL ALLEY RETURN, JOINT,
AND DRIVEWAY DETAILS
AND CURB & GUTTER DETAIL
AT DRAINAGE STRUCTURE

PROJECT NO. 08199	SCALE NONE	SHEET 4 OF 14 SHEETS
DRAWN/DESIGNED JEP-JFP/THK	DATE AUG., 2009	
CHECKED/APPROVED THK/THK	FIELD BOOK NO. FILE	