

F.A.P. RTE.	SECTION	COUNTY	TOTAL SHEETS	SHEET NO.
1632	09-00059-00-LT	COOK	15	1
ILLINOIS CONTRACT No. 63327				

**INDEX OF SHEETS**

- 1 TITLE SHEET
- 2 LEGEND AND GENERAL NOTES
- 3 SUMMARY OF QUANTITIES
- 4 PLAN SHEET STA. 112+60 TO 124+00
- 5 PLAN SHEET STA. 124+00 TO 138+00
- 6 PLAN SHEET STA. 138+00 TO 152+00
- 7 PLAN SHEET STA. 152+00 TO 162+90
- 8 CIRCUIT WIRING DIAGRAM STA. 112+60 TO 138+00
- 9 CIRCUIT WIRING DIAGRAM STA. 138+00 TO 162+90
- 10 INSTALLATION DETAILS
- 11 CONTROL CABINET WIRING DIAGRAM
- 12 ELECTRIC SERVICE INSTALLATION AERIAL, REMOTE DISCONNECT
- 13 LIGHT POLE FOUNDATION, METAL AND INSTALLATION DETAILS
- 14 LIGHT POLE FOUNDATION OFFSET AND INSTALLATION DETAILS
- 15 INFORMATION SIGN DETAILS (TC-10 AND TC-22)

**STATE STANDARDS**

- 000001-05 STANDARD SYMBOLS, ABBREVIATIONS, AND PATTERNS (SHEETS 1, 2, 3, & 4)
- 280001-05 TEMPORARY EROSION CONTROL SYSTEMS (SHEETS 1 & 2)
- 701421-02 URBAN LANE CLOSURE, MULTILANE, DAY OPERATIONS ONLY, FOR SPEEDS > 45 MPH TO 55 MPH
- 701606-06 URBAN LANE CLOSURE MULTILANE 2W
- 701701-06 URBAN LANE CLOSURE MULTILANE INTERSECTION
- 701801-04 LANE CLOSURE MULTILANE, 1W OR 2W CROSSWALK OR SIDEWALK CLOSURE
- 701901-01 TRAFFIC CONTROL DEVICES (SHEETS 1, 2, & 3)

STRUCTURAL DESIGN TRAFFIC YEAR 2018

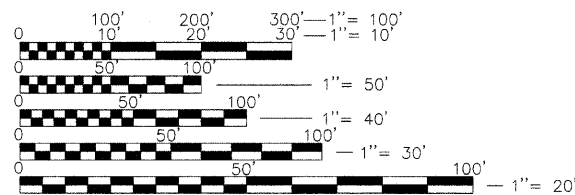
PV=1700 SU=200 MU=100

CLASS III ROADWAY

ADT 2000

IBR 3.0

TRAFFIC FACTOR=0.24



FULL SIZE PLANS HAVE BEEN PREPARED USING STANDARD ENGINEERING SCALES. REDUCED SIZED PLANS WILL NOT CONFORM TO STANDARD SCALES. IN MAKING MEASUREMENTS ON REDUCED PLANS, THE ABOVE SCALES MAY BE USED.

CALL J.U.L.I.E.  
JOINT UTILITY LOCATION  
INFORMATION FOR EXCAVATION  
1-800-892-0123 OR 811  
48 HOURS  
(TWO WORKING DAYS)  
TOLL FREE  
24 HOURS A DAY  
7 DAYS A WEEK

CONSULTANT : JOSEPH A. SCHUDT & ASSOCIATES, MATT ANDERSON

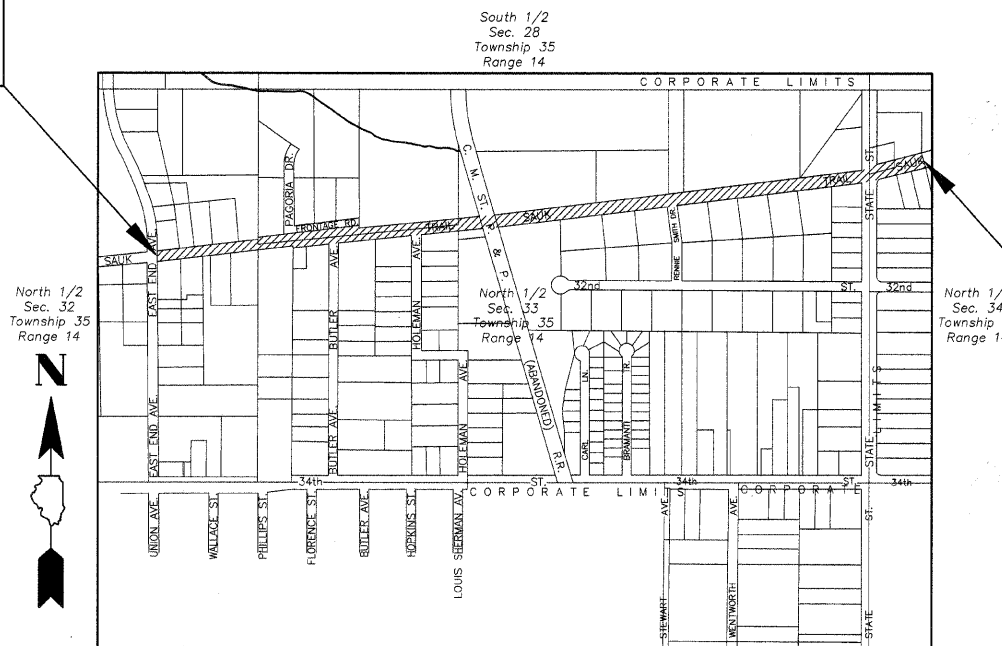
CONTRACT No. 63327

STATE OF ILLINOIS  
DEPARTMENT OF TRANSPORTATION  
DIVISION OF HIGHWAYS

**PLANS FOR PROPOSED  
FEDERAL-AID HIGHWAY  
F.A.U. ROUTE: 1632 (SAUK TRAIL)  
EAST END AVENUE TO STATE STREET  
SECTION: 09-00059-00-LT  
STREET LIGHTING  
PROJECT: ARA - 9003 (367)  
VILLAGE OF SOUTH CHICAGO HEIGHTS  
COOK COUNTY  
JOB No. C-91-681-09**



CONTRACT FOR SECTION  
BEGINS AT STATION 113±  
SAUK TRAIL



CONTRACT FOR SECTION  
ENDS AT STATION 163±  
SAUK TRAIL

*Matt Anderson*  
ILLINOIS PROFESSIONAL ENGINEER No. 082-050003  
SIGNED: 11-18-09  
LICENSE EXPIRES: 11-30-11

AGENCY RESPONSIBLE FOR LETTING

Approved: *James L. O'Brien*  
MAYOR  
Local Agency, Position

Passed: *NOVEMBER 19, 2009*  
*Chelt Chesnut*  
District 11 Engineer of Local Roads & Streets

Releasing for Bid  
Based on Limited  
Review: *NOVEMBER 19, 2009*  
*Diane M. O'Keefe*  
Deputy Director of Highways, Region 1 Engineer

PRINTED BY THE AUTHORITY  
OF THE STATE OF ILLINOIS

SAUK TRAIL: GROSS LENGTH = 5,030 FT.±  
NET LENGTH = 5,030 FT.± (0.95 MILES)

PROJECT LOCATION  
NOT TO SCALE

**Joseph A. Schudt & Associates**  
19350 S. HARLEM AVENUE FRANKFORT, IL 60423  
PHONE: 708-720-1000 FAX: 708-720-1065  
ILLINOIS REGISTERED DESIGN FIRM No. 184-001172  
CIVIL ENGINEERING LAND SURVEYING ENVIRONMENTAL LAND PLANNING GPS SERVICES

REVISED - 11-16-09  
REVISED - 11-12-09  
REVISED - 11-9-09  
REVISED - 10-12-09

FIELD ENGINEER : MEL MANGOBA 1-847-705-4408

M:\2009\09-027\09-027.dwg 11/18/09 7:21:27 AM COPY RIGHT, JOSEPH A. SCHUDT & ASSOCIATES - JAR