

3-1/C NO. 4 AWG
1-1/C NO. 4 AWG GREEN
IN 1-1/4 INCH PVC DUCT.

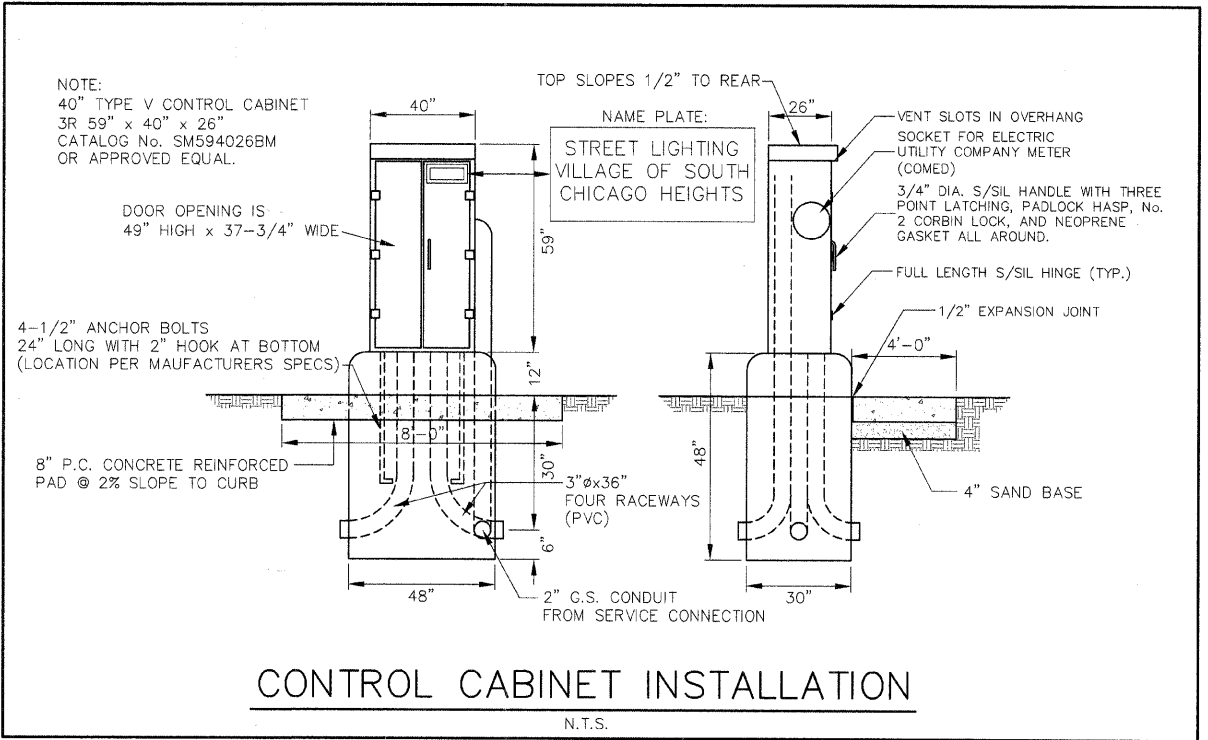
NOTES:

1. ALL CONTROL CABINET ITEMS SHALL HAVE SUITABLE IDENTIFICATION. OPEN CIRCUIT BREAKERS, CONTACTORS, AND OTHER OPEN DEVICES SHALL HAVE PERMANENT SELF STICKING TAGS. DEVICES IN ENCLOSURES SHALL HAVE ENGRAVED 2-COLOR LAMINATED PLASTIC NAME PLATES ATTACHED TO ENCLOSURES WITH SCREWS. NAME PLATES SHALL BE ENGRAVED TO CORRESPOND TO DESIGNATIONS ON THE DRAWINGS. INTERNAL CONTROL CABINET WIRING SHALL BE IDENTIFIED AS INDICATED, OR AS DIRECTED BY THE ENGINEER, BY MEANS OF SELF-STICKING TAGS APPLIED AT EACH CONNECTED END. IDENTIFICATION SHALL BE MADE BY THE CONTROL CABINET MANUFACTURER.
2. PROVIDE SEALING GROMMETS FOR ALL OPEN WIRING EXTENDED FROM DEVICES IN BOXES OR CABINETS WITHIN THE CONTROL CABINET.
3. ALL CONTROL CABINET WIRING SHALL BE #12AWG STRANDED UNLESS OTHERWISE INDICATED.
4. ALL CONTROL CABINET WIRING SHALL BE NEATLY DRESSED AND SUPPORTED.
5. THE CONTROL CABINET SHALL BE CONSTRUCTED TO U.L. STD. 508 AND BEAR THE U.L. LABEL "ENCLOSED INDUSTRIAL CONTROL PANEL".
6. SEE CONTROL CABINET AND FOUNDATION DETAIL SHEET FOR SCHEMATIC DIAGRAM AND DEVICE LAYOUT.

Joseph A. Schudt & Associates
 19350 S. HARLEM AVENUE FRANKFORT, IL 60423
 PHONE: 708-720-1000 FAX: 708-720-1065
 ILLINOIS REGISTERED DESIGN FIRM No. 184-001172
 CIVIL ENGINEERING LAND SURVEYING ENVIRONMENTAL LAND PLANNING GPS SERVICES

DEVICE SCHEDULE		
ITEM	QUAN.	DESCRIPTION
(A)	1	CIRCUIT BREAKER, MOLDED CASE, THERMAL MAGNETIC, 2-POLE, 600V, A.C., 225A. FRAME, 175A. NON-INTERCHANGEABLE TRIP, BOLT-ON TYPE, INTERRUPTING CAPACITY OF NOT LESS THAN 22,000 RMS SYMMETRICAL AMPERES AT 480V.
(B)	1	LIGHTING CONTACTOR (REMOTE CONTROL SWITCH) MECHANICALLY HELD, ASCO 920, MOUNTED ON SUB PANEL 200A., 2-POLE, 600V. WITH 240V. COIL
(C)	1	PANEL BOARD (INTERIOR ONLY) 480/240V. SINGLE PHASE WITH 200A. COPPER MAINS AND TWELVE IP-70A BOLT-ON BRANCH BREAKERS EACH RATED 277V. WITH INTERRUPTING CAPACITY OF NOT LESS THAN 14,000 RMS SYMMETRICAL AMPERES AT 277V.
(E)	1	CIRCUIT BREAKER, MOLDED CASE, THERMAL MAGNETIC, 1-POLE, 277V., BOLT-ON TYPE, WITH AN INTERRUPTING RATING OF NOT LESS THAN 14,000 RMS SYMMETRICAL AMPERES AT 277V.
(F)	1	CONTROL SWITCH, TOGGLE TYPE, SPDT, 20A., 240V. PREMIUM SPEC. GRADE
(G)	1	CONTROL SWITCH, MOMENTARY CONTACT, SPDT, 15A., 240V.
(H)	1	STEP DOWN TRANSFORMER 240V.-120V., 1KVA.
(J)	1	FUSE HOLDER 15A., 250V., 5A. FUSE
(K)	1	MICRO SWITCH (MOUNT WITH ACTUATOR TO SWITCH WHEN DOOR OPENED)
(L)	1	60 WATT LIGHT FIXTURE, VAPOR TIGHT, WITH GLOBE AND GUARD AND MOUNTING BOX
(M)	1	GFI RECEPTACLE, 120V., 15A., PREMIUM SPEC. GRADE, NEMA REFERENCE 5-15R IN WEATHER PROOF BOX WITH FLAP TYPE COVER
(N)	1	CONTROL RELAY 240V., DPDT 25A.
(O)	1	ELECTRIC UTILITY COMPANY METER SOCKET (COMED)
(P)	1	PHOTOELECTRIC CONTROL MOUNTED TO TOP OF NEAREST POLE
(Q)	1	3-1/C No. 10 AWC, 600W, INSTALLED IN DUCT TO NEAREST POLE

CONTROL CABINET LOAD TABLE			
CIRCUIT	AMPS	WATTS	V LOSS
A	7.29	1750	6.14
B	6.25	1500	5.21
C	8.33	2000	9.12
D	8.33	2000	9.49
E	7.29	1750	5.90
F	6.25	1500	4.96
G	8.32	2000	8.92
H	7.25	1750	7.82



CONTROL CABINET INSTALLATION

N.T.S.

Village of South Chicago Heights
Sauk Trail Lighting Project

FILE NAME =	USER NAME =	DESIGNED - S.M.H.	REVISED - 8-26-09	STATE OF ILLINOIS DEPARTMENT OF TRANSPORTATION	Control Cabinet Wiring Diagram	F.A.P. RTE.	SECTION	COUNTY	TOTAL SHEETS	SHEET NO.	
		DRAWN - J.A.R.	REVISED - 10-12-09			1632	09-00059-00-LT	COOK	15	11	
		CHECKED - S.M.H.	REVISED - 11-12-09			CONTRACT No. 63327					
		DATE - 7-31-09	REVISED - 12-2-09			ILLINOIS FED. AID PROJECT AREA - 9003 (367)					
SCALE: N.T.S.					SHEET NO. 11 OF 15 SHEETS		STA. TO STA.		09-027-LITS.dwg		