

MATCHLINE - SEE SHEET 10

MATCHLINE - SEE THIS SHEET

MATCHLINE - SEE THIS SHEET

MATCHLINE - SEE SHEET 13

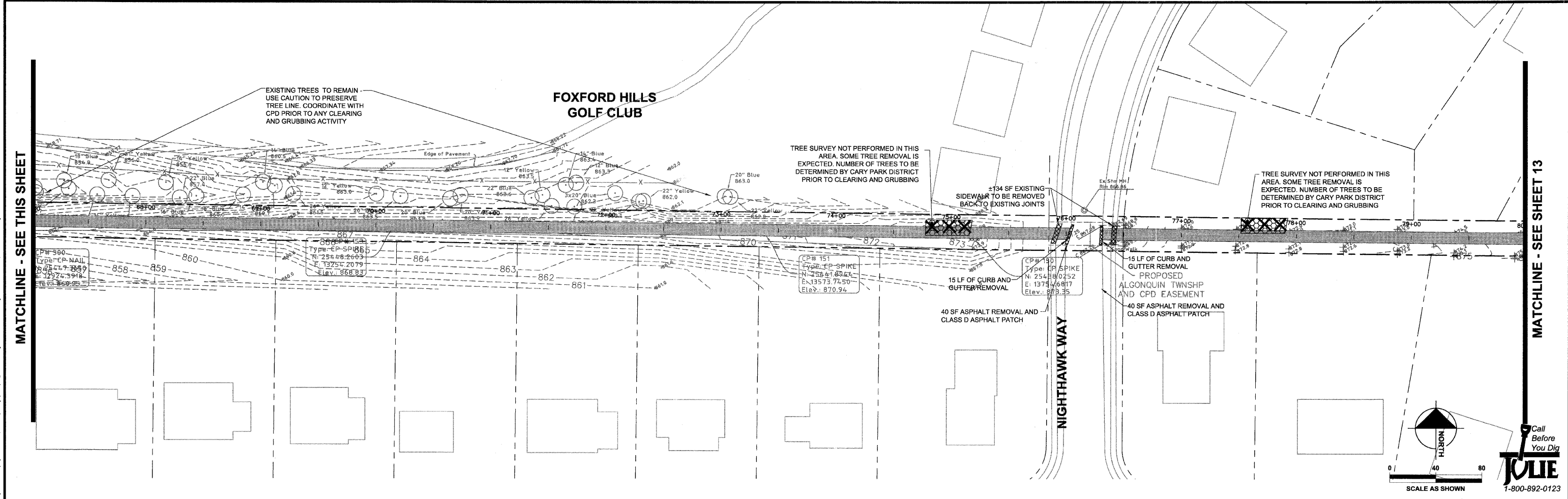
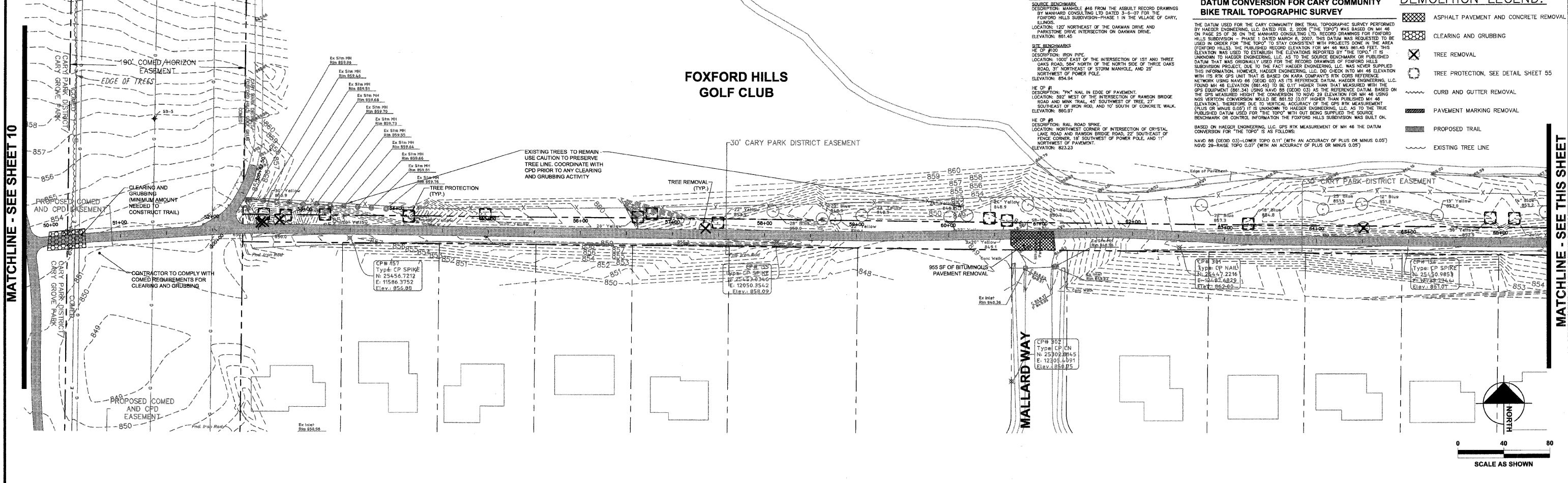
FOXFORD HILLS GOLF CLUB

FOXFORD HILLS GOLF CLUB

BENCHMARKS
 SOURCE BENCHMARK: MANHOLE #48 FROM THE ASBUILT RECORD DRAWINGS BY MANHARD CONSULTING LTD DATED 3-6-07 FOR THE FOXFORD HILLS SUBDIVISION-PHASE 1 IN THE VILLAGE OF CARY, ILLINOIS.
 LOCATION: 120' NORTHEAST OF THE OAKMAN DRIVE AND PARKSTONE DRIVE INTERSECTION ON OAKMAN DRIVE. ELEVATION: 851.45
 SITE BENCHMARKS:
 HE CP #102
 DESCRIPTION: IRON PIPE
 LOCATION: 100' EAST OF THE INTERSECTION OF 1ST AND THREE OAKS ROAD, 564' NORTH OF THE NORTH SIDE OF THREE OAKS ROAD, 31' NORTHEAST OF STORM MANHOLE, AND 25' NORTHWEST OF POWER POLE. ELEVATION: 854.94
 HE CP #1
 DESCRIPTION: "PH" NAIL IN EDGE OF PAVEMENT.
 LOCATION: 302' WEST OF THE INTERSECTION OF RAWSON BRIDGE ROAD AND MAIN TRAIL, 45' SOUTHWEST OF TREE, 27' SOUTHEAST OF IRON ROD, AND 10' SOUTH OF CONCRETE WALK. ELEVATION: 852.97
 HE CP #1
 DESCRIPTION: RAIL ROAD SPIKE
 LOCATION: NORTHWEST CORNER OF INTERSECTION OF CRYSTAL LAKE ROAD AND RAWSON BRIDGE ROAD, 22' SOUTHEAST OF FENCE CORNER, 18' SOUTHWEST OF POWER POLE, AND 11' NORTHWEST OF PAVEMENT. ELEVATION: 853.23

DATUM CONVERSION FOR CARY COMMUNITY BIKE TRAIL TOPOGRAPHIC SURVEY
 THE DATUM USED FOR THE CARY COMMUNITY BIKE TRAIL TOPOGRAPHIC SURVEY PERFORMED BY HAEGER ENGINEERING, LLC DATED FEB. 2, 2008 ("THE TOPO") WAS BASED ON MH 46 ON PAGE 25 OF 36 ON THE MANHARD CONSULTING LTD. RECORD DRAWINGS FOR FOXFORD HILLS SUBDIVISION - PHASE 1 DATED MARCH 8, 2007. THIS DATUM WAS REQUESTED TO BE USED IN ORDER FOR "THE TOPO" TO STAY CONSISTENT WITH PROJECTS DONE IN THE AREA (FOXFORD HILLS). THE PUBLISHED RECORD ELEVATION FOR MH 46 WAS 861.45 FEET. THIS ELEVATION WAS USED TO ESTABLISH THE ELEVATIONS REPORTED BY "THE TOPO". IT IS UNKNOWN TO HAEGER ENGINEERING, LLC AS TO THE SOURCE BENCHMARK OR PUBLISHED DATUM THAT WAS ORIGINALLY USED FOR THE RECORD DRAWINGS OF FOXFORD HILLS SUBDIVISION PROJECT, DUE TO THE FACT HAEGER ENGINEERING, LLC WAS NEVER SUPPLIED THIS INFORMATION. HOWEVER, HAEGER ENGINEERING, LLC DID CHECK INTO MH 46 ELEVATION WITH ITS RTK GPS UNIT THAT IS BASED ON KAMA COMPANY'S RTK CROSS REFERENCE NETWORK USING NAVD 86 (GEOID 03) AS ITS REFERENCE DATUM. HAEGER ENGINEERING, LLC FOUND MH 46 ELEVATION (861.45) TO BE 0.11' HIGHER THAN THAT MEASURED WITH THE GPS EQUIPMENT (861.34) USING NAVD 86 (GEOID 03) AS THE REFERENCE DATUM BASED ON THE GPS MEASURED HEIGHT. THE CONVERSION TO NGVD 29 ELEVATION FOR MH 46 USING NOS VERTICAL CONVERSION WOULD BE 861.52 (0.07' HIGHER THAN PUBLISHED MH 46 ELEVATION). THEREFORE DUE TO VERTICAL ACCURACY OF THE GPS RTK MEASUREMENT (PLUS OR MINUS 0.05') IT IS UNKNOWN TO HAEGER ENGINEERING, LLC AS TO THE TRUE PUBLISHED DATUM USED FOR "THE TOPO" WITH OUT BEING SUPPLIED THE SOURCE BENCHMARK OR CONTROL INFORMATION THE FOXFORD HILLS SUBDIVISION WAS BUILT ON. BASED ON HAEGER ENGINEERING, LLC GPS RTK MEASUREMENT OF MH 46 THE DATUM CONVERSION FOR "THE TOPO" IS AS FOLLOWS:
 NAVD 86 (GEOID 03)-LOWER TOPO 0.11' (WITH AN ACCURACY OF PLUS OR MINUS 0.05')
 NGVD 29-RAISE TOPO 0.07' (WITH AN ACCURACY OF PLUS OR MINUS 0.05')

- DEMOLITION LEGEND:**
- ASPHALT PAVEMENT AND CONCRETE REMOVAL
 - CLEARING AND GRUBBING
 - TREE REMOVAL
 - TREE PROTECTION, SEE DETAIL SHEET 55
 - CURB AND GUTTER REMOVAL
 - PAVEMENT MARKING REMOVAL
 - PROPOSED TRAIL
 - EXISTING TREE LINE



This document, together with the concept and design presented herein, is intended only for the specific purpose and client for which it was prepared. Review drawings were made by the Designer/Engineer/Architect/Planner/Interior Designer/Contractor/Manufacturer/Supplier/Installer/Constructor/Operator/Maintainer/Owner/Authority Having Jurisdiction. No other use or reproduction is permitted without the written consent of the Designer/Engineer/Architect/Planner/Interior Designer/Contractor/Manufacturer/Supplier/Installer/Constructor/Operator/Maintainer/Owner/Authority Having Jurisdiction.

DESIGNED -	JWH	REVISED	
DRAWN -	LES	REVISED	
CHECKED -	JMM	REVISED	
DATE -	10/02/2009	REVISED	

STATE OF ILLINOIS
 DEPARTMENT OF TRANSPORTATION

CARY PARK DISTRICT
 CARY COMMUNITY TRAIL

EXISTING CONDITIONS AND DEMOLITION PLAN
 STA. 50+00 TO STA. 66+50
 STA. 66+50 TO STA. 80+50
 STA. 300+00 TO STA. 300+82.50

SECTION	COUNTY	TOTAL SHEETS	SHEET NO.
06-P4001-00-BR	MCHENRY	64	12
FED. ROAD DIST. NO. 1	ILLINOIS	CONTRACT NO. 63333	

