

IDOT FEDERAL AID DESIGN ENGINEER: MARILIN SOLOMON, PE (847) 705-4407

F.A.U. RTE.	SECTION	COUNTY	TOTAL SHEETS	SHEET NO.
1472	05-00072-00-RS	COOK	12	1
FED. ROAD DIST. NO. ILLINOIS		FED. AID PROJECT		
CONTRACT NO: 63334				

STATE OF ILLINOIS
DEPARTMENT OF TRANSPORTATION
DIVISION OF HIGHWAYS

PLANS FOR PROPOSED
FEDERAL AID HIGHWAY

F.A.U. ROUTE 1472 (RIDGEWOOD ROAD)
GOLF ROAD TO F.A.P. 372 (IL 171 / FIRST AVENUE)

ROADWAY RESURFACING
SECTION 05-00072-00-RS
PROJECT: ARA-8003(516)
VILLAGE OF RIVERSIDE
COOK COUNTY
C-91-200-05

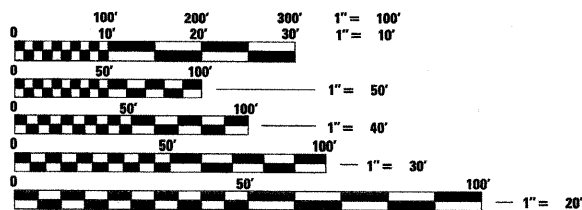
FOR INDEX OF SHEETS, SEE SHEET NO. 2

DESIGN DESIGNATION:
COLLECTOR

TRAFFIC DATA
ADT: 7,000 (2030)

SPEED LIMIT:
25 MPH (POSTED)
30 MPH (DESIGN)

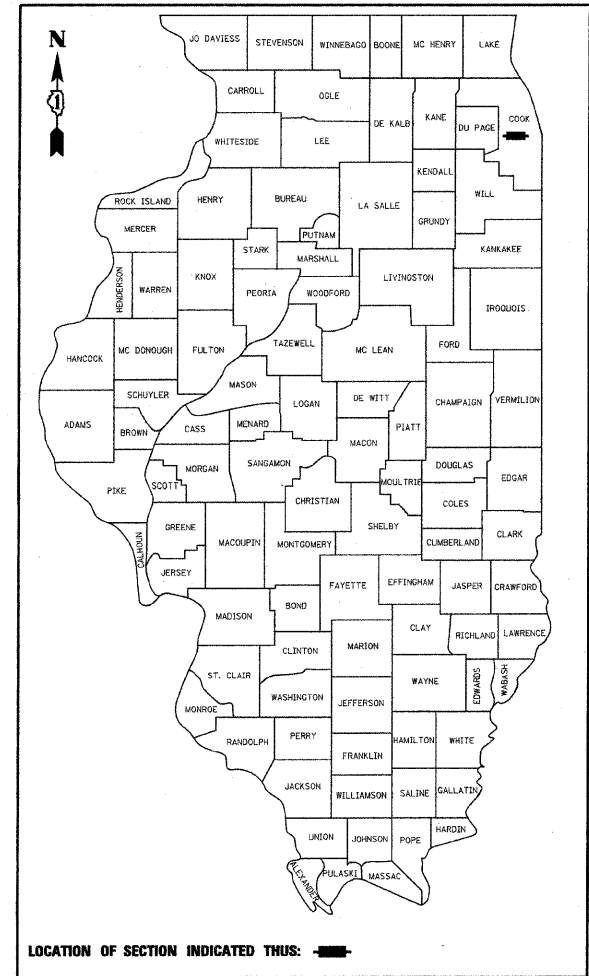
PROJECT LOCATED IN
VILLAGE OF RIVERSIDE



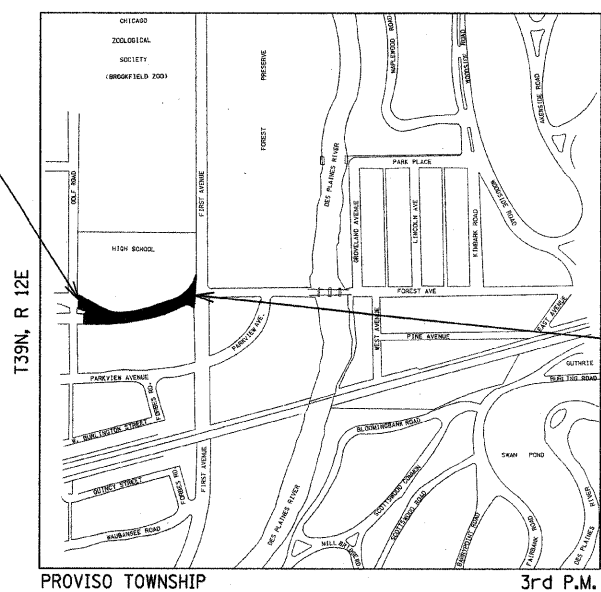
FULL SIZE PLANS HAVE BEEN PREPARED USING STANDARD ENGINEERING SCALES, REDUCED SIZED PLANS WILL NOT CONFORM TO STANDARD SCALES, IN MAKING MEASUREMENTS ON REDUCED PLANS, THE ABOVE SCALES MAY BE USED.

J.U.L.I.E.
JOINT UTILITY LOCATION INFORMATION FOR EXCAVATION
1-800-892-0123 OR 811

CONTRACT NO. 63334



PROJECT BEGINS-RIDGEWOOD ROAD
AT GOLF ROAD
STA 0+27



PROJECT ENDS-RIDGEWOOD ROAD
AT FIRST AVENUE (IL 171)
STA 8+57

PROVISO TOWNSHIP 3rd P.M.
LOCATION MAP
GROSS LENGTH OF PROJECT: 830 FT. (0.157 MI.)
NET LENGTH OF PROJECT: 830 FT. (0.157 MI.)
39N12E PROVISO TOWNSHIP SECTION 35
SCALE: NTS

STATE OF ILLINOIS
DEPARTMENT OF TRANSPORTATION
DIVISION OF HIGHWAYS

APPROVED: September 30, 2009

Doug Cook
Riverside, Director of Public Works

PASSED: October 27, 2009

Christy Hebert
District 1 Engineer of Local Roads & Streets

Releasing for Bid
Based on Limited
Review October 29, 2009

Deann M. O'Keefe
Deputy Director of Highways, Region 1 Engineer

PRINTED BY AUTHORITY OF THE STATE OF ILLINOIS

JJB
JAMES J. BENES & ASSOCIATES
CONSULTING ENGINEERS
950 WARRENVILLE ROAD, SUITE 101
LISLE, IL 60532
(630) 719-7570
SIGNATURE: *James J. Benes*
DATE: October 9, 2009
IL LICENSE NO: 062-060441
EXP. DATE: NOVEMBER 30, 2009
FIELD: JAMES J. BENES AND ASSOCIATES, INC.
CIVIL ENGINEERING

