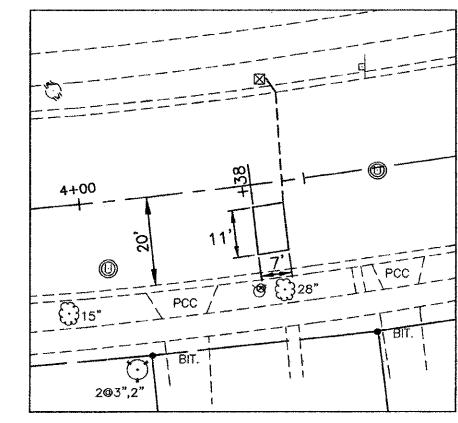
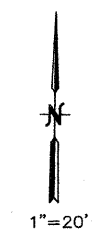


STRUCTURE RECONSTRUCTION SCHEDULE				
STATION	OFFSET (FOOT)	LT/RT	DESCRIPTION	TYPE 1 FRAME
1+09	23	RT	CATCH BASINS TO BE RECONSTRUCTED	OPEN LID
1+31	20	LT	INLETS TO BE RECONSTRUCTED	OPEN LID
4+66	1	RT	MANHOLES TO BE RECONSTRUCTED	CLOSED LID
4+99	20	RT	INLETS TO BE RECONSTRUCTED	OPEN LID
6+82	10	RT	MANHOLES TO BE RECONSTRUCTED	CLOSED LID

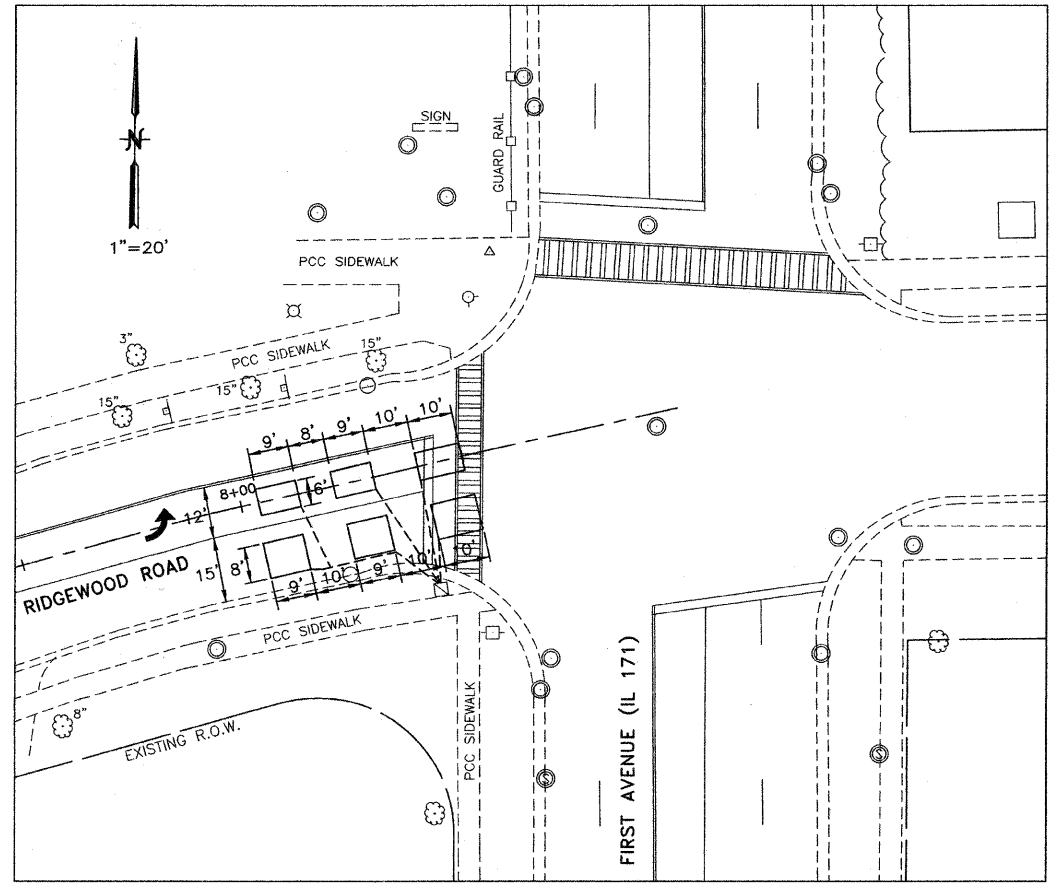


DETECTOR LOOP REPLACEMENT DETAIL
RIDGEWOOD ROAD AT HIGH SCHOOL

STRUCTURE ADJUSTMENT SCHEDULE				
STATION	OFFSET (FOOT)	LT/RT	DESCRIPTION	TYPE 1 FRAME
2+45	4	RT	FRAME AND LID TO BE ADJUSTED (SPECIAL)	-
2+93	20	LT	FRAME AND LID TO BE ADJUSTED	OPEN LID
2+94	20	RT	FRAME AND LID TO BE ADJUSTED	-
4+05	15	RT	FRAME AND LID TO BE ADJUSTED (SPECIAL)	CLOSED LID
5+02	20	LT	FRAME AND LID TO BE ADJUSTED	OPEN LID
6+89	22	RT	FRAME AND LID TO BE ADJUSTED	OPEN LID

DRIVEWAY SCHEDULE							
STATION	OFFSET (L/R/T)	ADDRESS	PROPOSED WIDTH AT SIDEWALK (FOOT)	PROPOSED WIDTH AT BACK / CURB (FOOT)	DRIVEWAY PAVEMENT REMOVAL (SQ YD)	STABILIZED DRIVEWAYS 7" (SQ YD)	P.C.C. DRIVEWAY PVMT, 7" (SQ YD)
101+36	RT	# 211	11	17	14.4	-	17.1
3+13	RT	# 199/195	19	25	16.7	-	25.7
3+77	RT	# 191	11	17	8.0	-	10.1
4+21	RT	# 187	10	16	6.0	-	8.7
4+67	RT	# 183	10	16	6.8	-	8.7
5+15	RT	# 179	11	17	9.3	-	9.3
5+98	RT	# 175	10	16	8.7	9.4	-
6+54	RT	# 171	17	23	11.3	-	13.3
TOTALS:					81	9	93

* ANY INCIDENTAL EARTH EXCAVATION REQUIRED TO REPLACE DRIVEWAY APRON AS PROPOSED WILL NOT BE PAID FOR SEPARATELY AND SHALL BE INCLUDED IN THE COST OF THIS ITEM.



DETECTOR LOOP REPLACEMENT DETAIL
RIDGEWOOD ROAD AND FIRST AVENUE (IL 171)

REVISIONS	
NAME	DATE

ILLINOIS DEPARTMENT OF TRANSPORTATION
F.A.U. 1472
RIDGEWOOD ROAD

DETECTOR LOOP DETAILS
AND SCHEDULES

JJB
JAMES J. BENES & ASSOCIATES, INC.
950 Warrenville Road, Suite 101, Lisle, Illinois 60532
Tel. (630) 719-7570 • Fax (630) 719-7589

SCALE: N.T.S.
DATE: 9/15/09
DRAWN BY: SMP
CHECKED BY: JDS