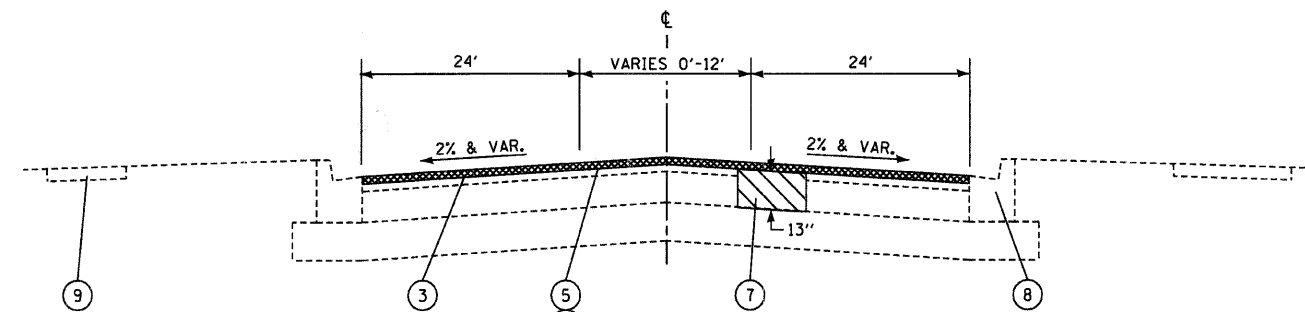
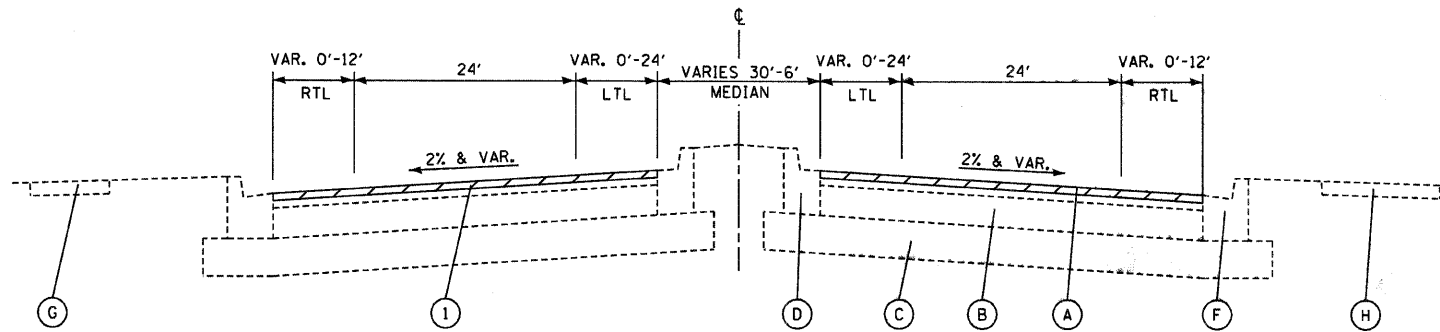


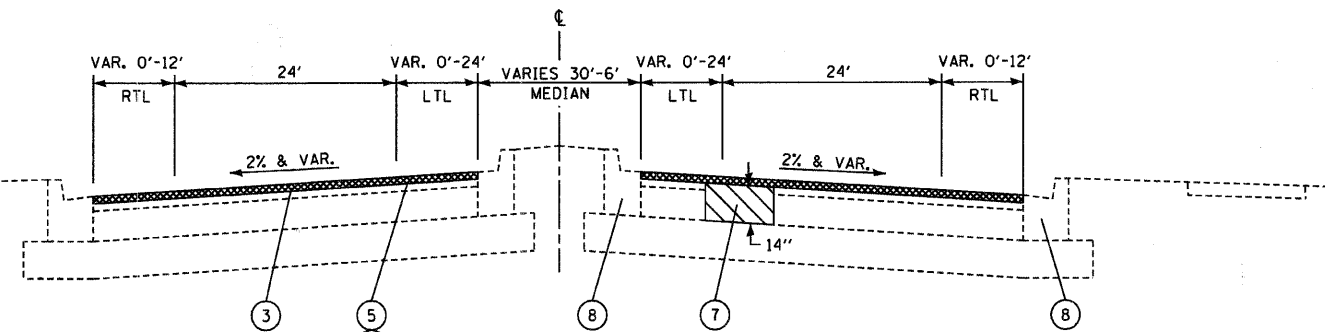
CH 3 FERRY ROAD
RIVER ROAD TO WEST BRANCH - DUPAGE RIVER
STA. 99+06 TO STA. 116+16
EXISTING TYPICAL SECTION



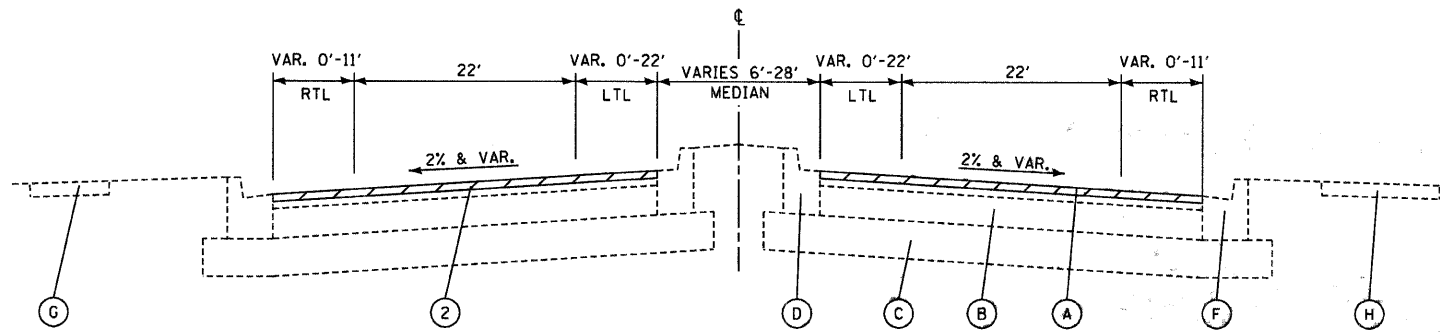
CH 3 FERRY ROAD
RIVER ROAD TO WEST BRANCH - DUPAGE RIVER
STA. 99+06 TO STA. 116+16
PROPOSED TYPICAL SECTION



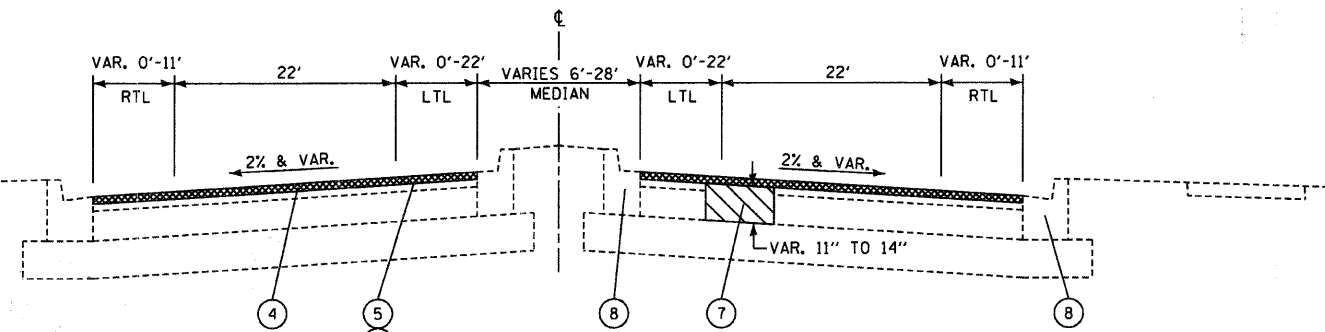
CH 3 FERRY ROAD
WEST BRANCH - DUPAGE RIVER TO MILL STREET
STA. 116+16 TO STA. 166+98
EXISTING TYPICAL SECTION



CH 3 FERRY ROAD
WEST BRANCH - DUPAGE RIVER TO MILL STREET
STA. 116+16 TO STA. 166+98
PROPOSED TYPICAL SECTION



CH 53 DIEHL ROAD
WINFIELD ROAD TO MILL STREET
STA. 88+66 TO STA. 118+95
EXISTING TYPICAL SECTION



CH 53 DIEHL ROAD
WINFIELD ROAD TO MILL STREET
STA. 88+66 TO STA. 118+95
PROPOSED TYPICAL SECTION

- (A) EXISTING HMA BINDER & SURFACE (VARIES 3" TO 4")
- (B) EXISTING HMA OR P.C.C. BASE COURSE
- (C) EXISTING AGGREGATE SUBGRADE
- (D) EXISTING COMB. CONCRETE CURB & GUTTER, TYPE B-6.12
- (E) EXISTING COMB. CONCRETE CURB & GUTTER, TYPE B-6.18
- (F) EXISTING COMB. CONCRETE CURB & GUTTER, TYPE B-6.24
- (G) EXISTING SIDEWALK
- (H) EXISTING BITUMINOUS PATH

- LEGEND**
- (1) HMA SURFACE REMOVAL, 1-1/2"
 - (2) HMA SURFACE REMOVAL, 1-3/4"
 - (3) HMA SURFACE COURSE, MIX "D", N70, 1-1/2"
 - (4) POLY. HMA SURFACE COURSE, MIX "F", N90, 1-3/4"
 - (5) BITUMINOUS MATERIALS (PRIME COAT)
 - (6) AGGREGATE (PRIME COAT)
 - (7) PATCH (AS DIRECTED BY THE ENGINEER)
 - (8) COMB. CONC. CURB & GUTTER REMOVAL & REPLACEMENT (AS DIRECTED BY THE ENGINEER)
 - (9) SIDEWALK REMOVAL & REPLACEMENT (AS DIRECTED BY THE ENGINEER)

NOTE:
LEVELING BINDER (MIN. 3/4"), IF REQUIRED, SHALL BE LEVELING BINDER (MACHINE METHOD), N70, IL 9.5

NO.	DATE	DESCRIPTION OF REVISIONS	NO.	DATE	DESCRIPTION OF REVISIONS