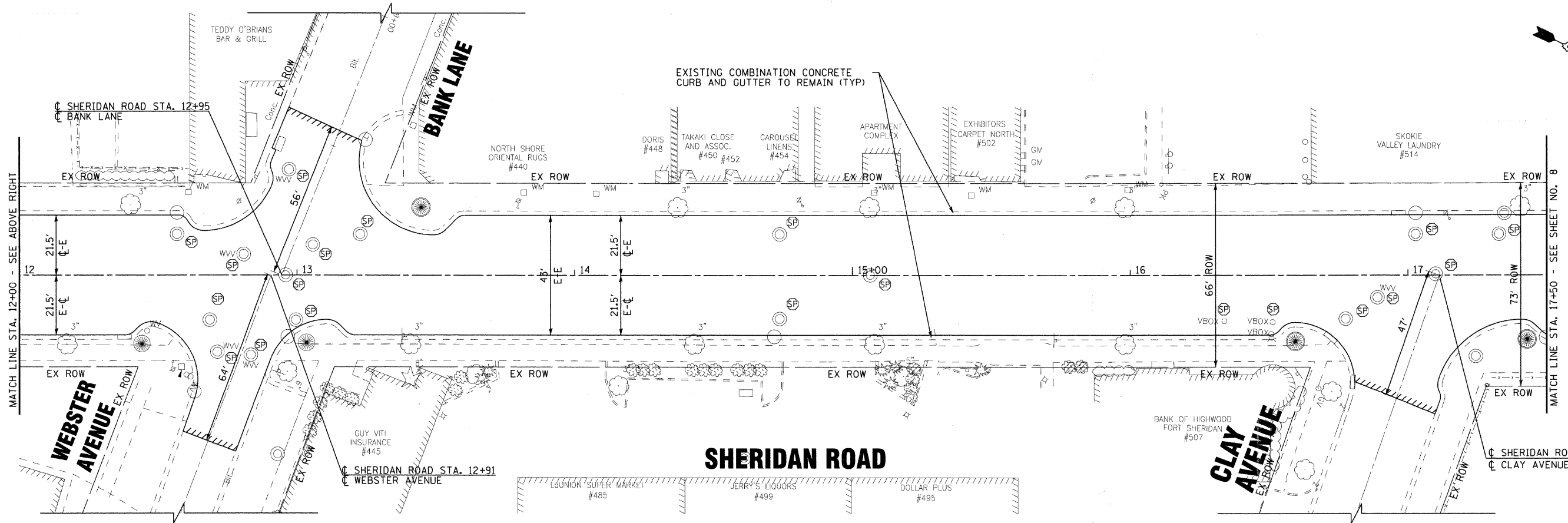
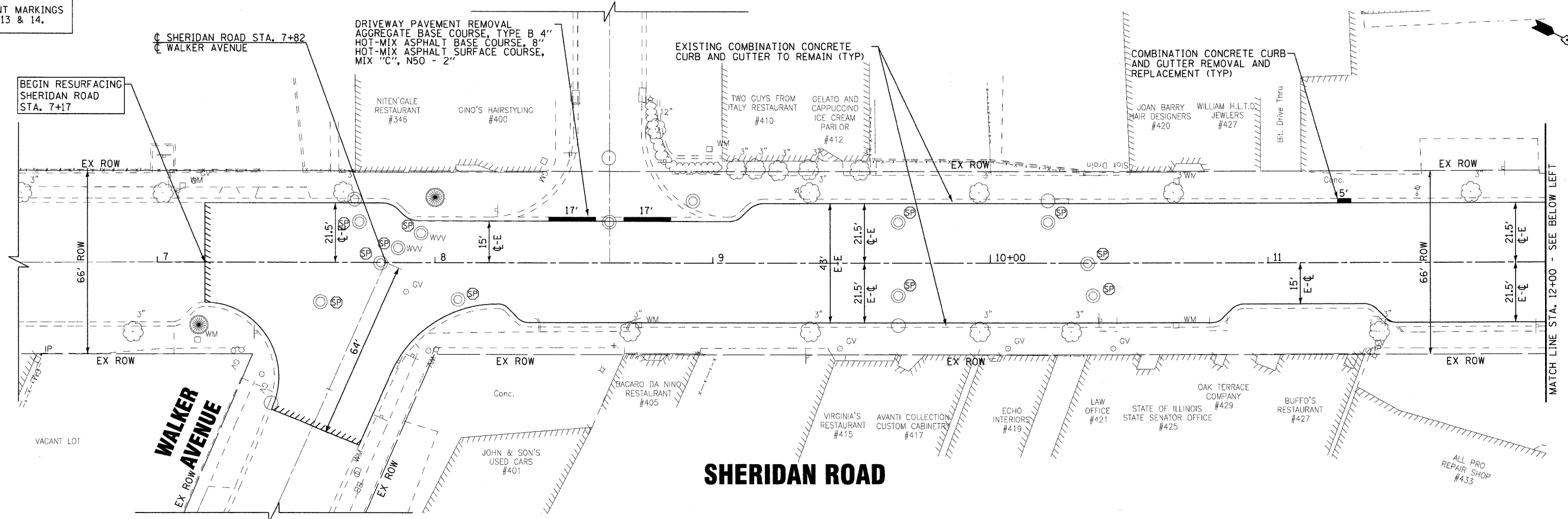


FOR PAVEMENT MARKINGS
SEE SHEETS 13 & 14.



COPYRIGHT © 2009 BY BAXTER & WOODMAN, INC.
 STATE OF ILLINOIS - PROFESSIONAL DESIGN FIRM
 LICENSE NO. - 184-00124 - EXPIRES 4/30/2011
 I:\PROJECTS\090831-Sheridan LAPP\CADD\SURVEY\DRAWINGS\GONS\Sheets\090831-pp1.sht
 10/15/2009 3:20:13 PM



DESIGNED - SLN	REVISED - IDOT REVIEW 10/05/09
DRAWN - KAR	REVISED -
CHECKED - RWL	REVISED -
DATE - 08-20-09	FILE - 090831-pp1.sht

CITY OF HIGHWOOD, ILLINOIS
SHERIDAN ROAD ARRA (LAPP)
RESURFACING

PLAN - SHERIDAN ROAD

SCALE: 1" = 20' STA. 7+00 TO STA. 17+50

F.A.U. RTE.	SECTION	COUNTY	TOTAL SHEETS	SHEET NO.
2744	09-00053-00-RS	LAKE	25	7
FED. ROAD DIST. NO. 1 C-91-891-09			CONTRACT NO. 63338	
ILLINOIS FED. AID PROJECT ARA-900314571				