

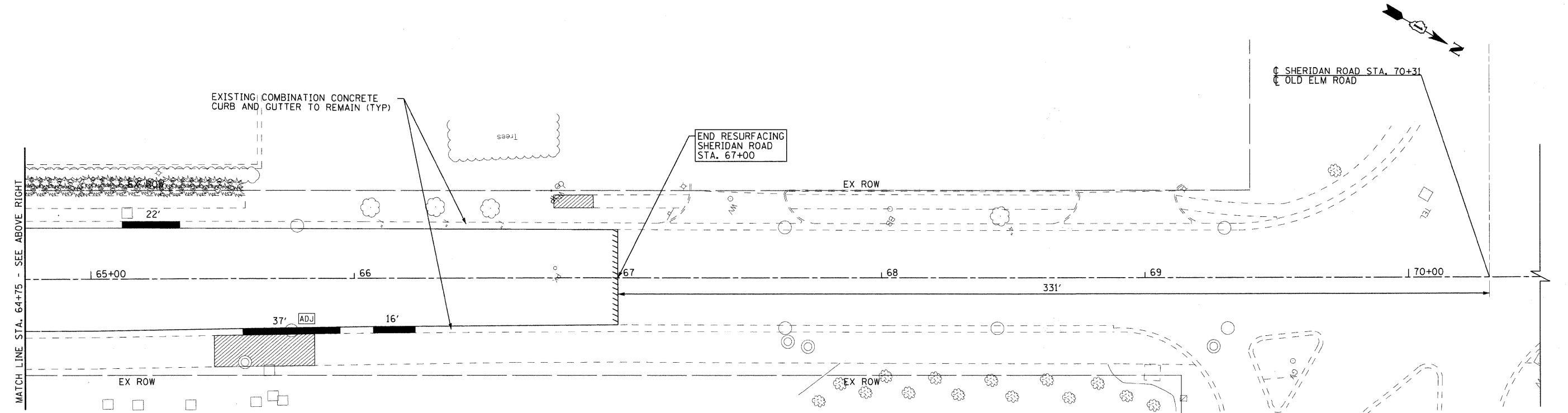
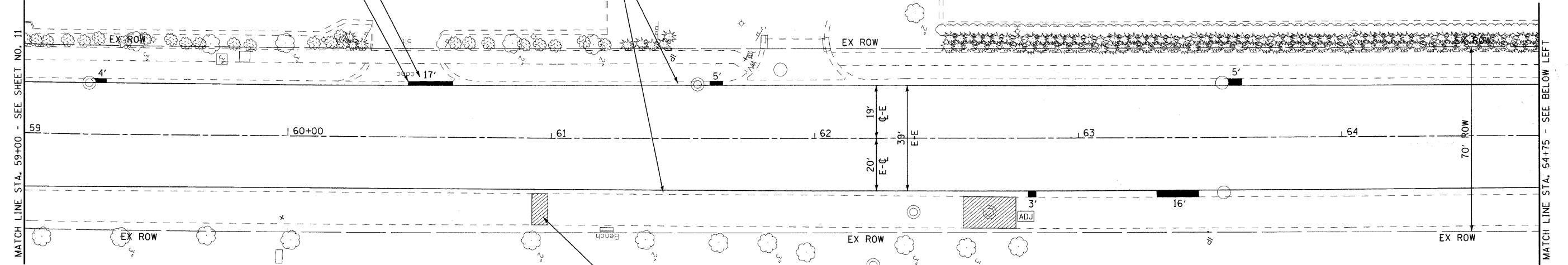
FOR PAVEMENT MARKINGS
SEE SHEETS 13 & 14.

DRIVEWAY PAVEMENT REMOVAL
PORTLAND CEMENT CONCRETE
DRIVEWAY PAVEMENT, 8 INCH

COMBINATION CONCRETE CURB
AND GUTTER REMOVAL AND
REPLACEMENT (TYP)

EXISTING COMBINATION CONCRETE
CURB AND GUTTER TO REMAIN (TYP)

SIDWALK REMOVAL
PORTLAND CEMENT CONCRETE SIDEWALK 5 INCH
(TYP)



COPYRIGHT © 2009 BY BAXTER & WOODMAN, INC.
 STATE OF ILLINOIS - PROFESSIONAL DESIGN FIRM
 LICENSE NO. - 084-000291 - EXPIRES 4/30/2011
 4180 JC
 10/15/2009 3:02:25 PM
 \\p101d1r\er\p0122x34.dwg
 \\p101d1r\er\p0122x34.dwg
 \\p101d1r\er\p0122x34.dwg
 \\p101d1r\er\p0122x34.dwg



DESIGNED - SLN	REVISED - IDOT REVIEW 10/05/09
DRAWN - KAR	REVISED -
CHECKED - RWL	REVISED -
DATE - 08-20-09	FILE - 090831-pp6.sht

CITY OF HIGHWOOD, ILLINOIS
SHERIDAN ROAD ARRA (LAPP)
RESURFACING

PLAN - SHERIDAN ROAD

SCALE: 1" = 20' STA. 59+00 TO STA. 70+00

F.A.U. RTE.	SECTION	COUNTY	TOTAL SHEETS	SHEET NO.
2744	09-00053-00-RS	LAKE	25	12
FED. ROAD DIST. NO. 1 C-91-891-09			CONTRACT NO. 63338	
ILLINOIS FED. AID PROJECT ARA-9003(457)				