

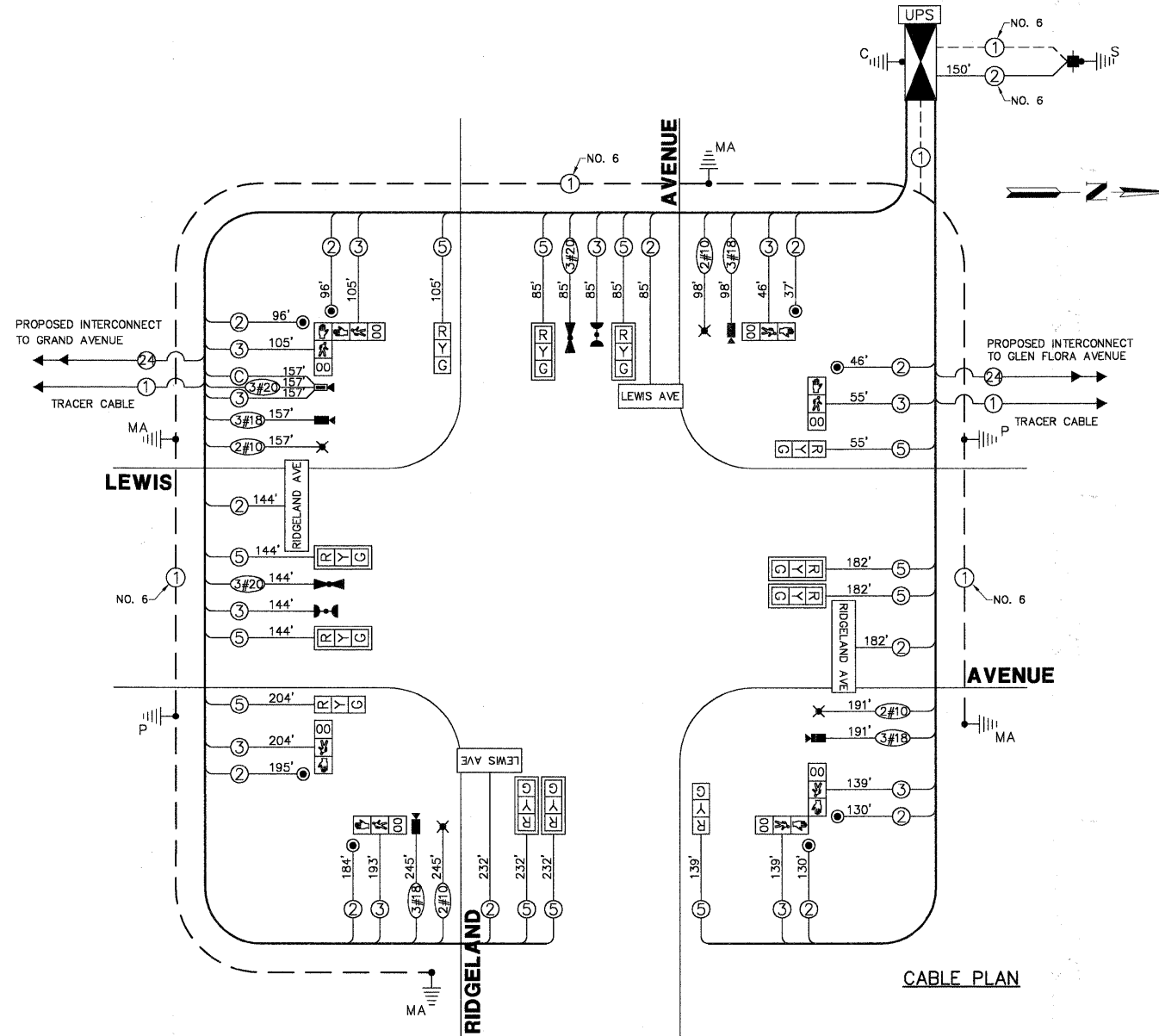
SCHEDULE OF QUANTITIES

LEWIS AVENUE AT RIDGELAND AVENUE TRAFFIC SIGNAL MODERNIZATION

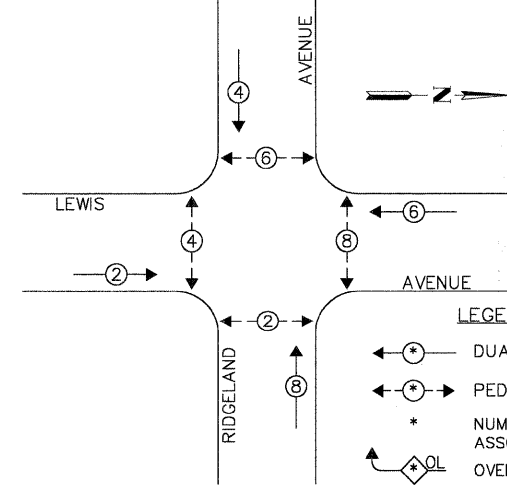
NO.	QUANT.	UNIT
1.	7	CU.YD. EARTH EXCAVATION
2.	20	SQ.YD. AGGREGATE BASE COURSE, TYPE B, 4"
3.	700	SQ.FT. PORTLAND CEMENT CONCRETE SIDEWALK, 5"
4.	108	SQ.FT. DETECTABLE WARNINGS
5.	125	FOOT COMBINATION CURB AND GUTTER REMOVAL
6.	600	SQ.FT. SIDEWALK REMOVAL
7.	7	EACH FRAMES AND LIDS TO BE ADJUSTED
8.	125	FOOT COMBINATION CONCRETE CURB AND GUTTER, TYPE B6.12
9.	360	FOOT THERMOPLASTIC PAVEMENT MARKING - LINE 12"
10.	50	FOOT THERMOPLASTIC PAVEMENT MARKING - LINE 24"
11.	100	SQ.FT. PAVEMENT MARKING REMOVAL
12.	18	FOOT CONDUIT IN TRENCH, 2" DIA, GALVANIZED STEEL
13.	34	FOOT CONDUIT IN TRENCH, 2-1/2" DIA, GALVANIZED STEEL
14.	28	FOOT CONDUIT IN TRENCH, 3-1/2" DIA, GALVANIZED STEEL
15.	10	FOOT CONDUIT IN TRENCH, 4" DIA, GALVANIZED STEEL
16.	169	FOOT CONDUIT PUSHED, 4" DIA, GALVANIZED STEEL
17.	45	FOOT CONDUIT PUSHED, 5" DIA, GALVANIZED STEEL
18.	2	EACH HANDHOLE
19.	2	EACH DOUBLE HANDHOLE
20.	691	FOOT ELECTRIC CABLE IN CONDUIT, 600 (EPR-TYPE RHW) 2-1/C NO. 10
21.	85	FOOT TRENCH AND BACKFILL FOR ELECTRICAL WORK
22.	4	EACH LUMINAIRE, SODIUM VAPOR, HORIZONTAL MOUNT, PHOTO-CELL CONTROL 250 WATT
23.	1	EACH FULL-ACTUATED CONTROLLER AND TYPE IV CABINET (SPECIAL)
24.	1	EACH TRANSCEIVER - FIBER OPTIC
25.	1,566	FOOT ELECTRIC CABLE IN CONDUIT, SIGNAL NO. 14 2C
26.	1,374	FOOT ELECTRIC CABLE IN CONDUIT, SIGNAL NO. 14 3C
27.	1,789	FOOT ELECTRIC CABLE IN CONDUIT, SIGNAL NO. 14 5C
28.	39	FOOT ELECTRIC CABLE IN CONDUIT, SERVICE, NO. 6 2C
29.	3	EACH STEEL COMBINATION MAST ARM ASSEMBLY AND POLE, 32 FT (SPECIAL)
30.	1	EACH STEEL COMBINATION MAST ARM ASSEMBLY AND POLE, 36 FT (SPECIAL)
31.	8	FOOT CONCRETE FOUNDATION, TYPE A
32.	4	FOOT CONCRETE FOUNDATION, TYPE C
33.	60	FOOT CONCRETE FOUNDATION, TYPE E, 36-INCH DIAMETER
34.	8	EACH SIGNAL HEAD, L.E.D., 1-FACE, 3-SECTION, MAST ARM MOUNTED
35.	4	EACH SIGNAL HEAD, L.E.D., 1-FACE, 3-SECTION, BRACKET MOUNTED
36.	4	EACH PEDESTRIAN COUNTDOWN SIGNAL HEAD, L.E.D., 1-FACE, BRACKET MOUNTED
37.	2	EACH PEDESTRIAN COUNTDOWN SIGNAL HEAD, L.E.D., 2-FACE, BRACKET MOUNTED
38.	8	EACH TRAFFIC SIGNAL BACKPLATE, LOUVERED, ALUMINIUM
39.	2	EACH LIGHT DETECTOR
40.	1	EACH LIGHT DETECTOR AMPLIFIER
41.	8	EACH PEDESTRIAN PUSH-BUTTON
42.	1	EACH TEMPORARY TRAFFIC SIGNAL INSTALLATION
43.	1	EACH REMOVE EXISTING TRAFFIC SIGNAL EQUIPMENT
44.	4	EACH REMOVE EXISTING HANDHOLE
45.	7	EACH REMOVE EXISTING CONCRETE FOUNDATION
46.	1	EACH SERVICE INSTALLATION, POLE MOUNT
47.	490	FOOT ELECTRIC CABLE IN CONDUIT, GROUNDING, NO. 6 1C
48.	386	FOOT ELECTRIC CABLE IN CONDUIT, NO. 20 3C, TWISTED, GROUNDED
49.	157	FOOT ELECTRIC CABLE IN CONDUIT, COAXIAL
50.	691	FOOT ELECTRIC CABLE IN CONDUIT, COMMUNICATION NO. 18, 3C
51.	1	EACH VIDEO DETECTION SYSTEM (COMPLETE INTERSECTION)
52.	4	EACH L.E.D. INTERNALLY ILLUMINATED STREET NAME SIGN
53.	2	EACH TRAFFIC SIGNAL POST, 14 FT (SPECIAL)
54.	1	EACH REMOTE-CONTROLLED VIDEO SYSTEM
55.	1	EACH UNINTERRUPTIBLE POWER SUPPLY
56.	1	EACH VIDEO ENCODER

CABLE PLAN LEGEND

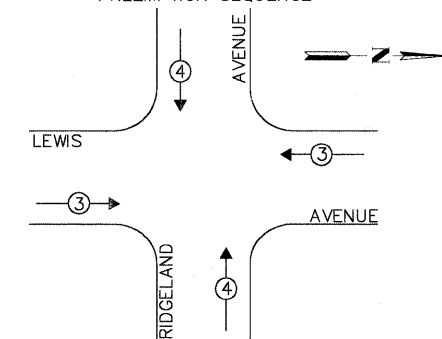
EXISTING	PROPOSED	DESCRIPTION
		12" TRAFFIC SIGNAL SECTION
		CONTROLLER CABINET
		TELEPHONE INSTALLATION
		EMERGENCY VEHICLE LIGHT DETECTOR
		PUSHBUTTON DETECTOR
		GROUND CABLE IN CONDUIT, NO.6 SOLID COPPER (GREEN)
		SIGNAL FACE WITH BACKPLATE. "P" INDICATES PROGRAMMED HEAD
		ILLUMINATED SIGN "NO LEFT TURN"
		ILLUMINATED SIGN "NO RIGHT TURN"
		GROUND ROD AT POST (P) OR MAST ARM POLE (MA)
		BELDEN 1694A RG-6/4 COAXIAL CABLE
		LUMINAIRE
		VIDEO DETECTION CAMERA
		PTZ CAMERA
		VIDEO COMMUNICATIONS CABINET
		L.E.D. STREET NAME SIGN
		UNINTERRUPTIBLE POWER SUPPLY



CONTROLLER SEQUENCE



EMERGENCY VEHICLE PREEMPTION SEQUENCE



LEGEND:
 DUAL ENTRY PHASE
 PEDESTRIAN PHASE
 NUMBER REFERS TO ASSOCIATED PHASE OVERLAP

PHASE DESIGNATION DIAGRAM

PROPOSED EMERGENCY VEHICLE PREEMPTORS		
EMERGENCY VEHICLE PREEMPTOR	3	4
MOVEMENT		

THE TRAFFIC SIGNAL CONTROL EQUIPMENT FOR THIS PROJECT SHALL BE "ECONOLITE NTCIP" COMPLIANT.

L.C.D.O.T. TRAFFIC SIGNAL INSTALLATION ELECTRICAL SERVICE REQUIREMENTS					TOTAL WATTAGE
TYPE	NO LAMPS	WATTAGE INCAND.	L.E.D.	% OPERATION	
SIGNAL (RED)	12	135	10	0.50	60.0
SIGNAL (YELLOW)	12	135	19	0.10	22.8
SIGNAL (GREEN)	12	135	11	0.40	52.8
ARROW	-	135	9	-	-
RED SIGNAL	8	90	9	1.00	72.0
CONTROLLER	1	-	100	1.00	100.0
LUMINAIRE	4	-	250	0.50	500.0
L.E.D. ST. NAME SIGN	4	-	64	0.50	128.0
VIDEO SYSTEM	1	-	150	1.00	150.0
BATTERY BACKUP	1	-	25	1.00	25.0
TOTAL =	110.6				

FOUNDATION (DEPTH) (FT.)	CABLE SLACK (FT.)	VERTICAL (FT.)
TYPE A - POST 4	HANDHOLE 6.5	ALL FOUNDATIONS 3.5
TYPE D - CONTROLLER 4	DOUBLE HANDHOLE 13	MAST ARM (L) POLE 20'+1-2'
TYPE E - MAST ARM POLE 15	SIGNAL POST 2	BRACKET MOUNTED 15
	CONTROLLER CAB. 1	PEDESTRIAN MOUNTED 4
	FIBER OPTIC 13	ELECTRIC SERVICE 13.5
	ELECTRIC SERVICE 1	SERVICE TO GROUND 13.5
	GROUND CABLE 1	POST MOUNTED 6

ENERGY COSTS - BILLED TO: CITY OF WAUKEGAN
 (ADDRESS) 100 N. M.L.K. JR. AVENUE
 (ADDRESS) WAUKEGAN, IL
 ENERGY SUPPLY - CONTACT: NEW BUSINESS
 PHONE: (888) 639-3552
 COMPANY: COM-ED, LIBERTYVILLE

FILE NAME = 4135.315-TR1.dwg	USER NAME = GHX	DESIGNED - JRD	REVISED - 9/15/09 (LCDOT)
		DRAWN - ZCW	REVISED - 9/25/09 (IDOT)
		CHECKED - DPB	REVISED - 10/19/09 (LCDOT)
		DATE - 10/19/09	REVISED -



CABLE PLAN, PHASE DESIGNATION DIAGRAM AND SCHEDULE OF QUANTITIES
 LEWIS AVENUE AT RIDGELAND AVENUE
 SCALE: NONE SHEET NO. 29 OF 86 SHEETS STA. TO STA.

F.A.P. RTE 2730	SECTION 08-00259-00-TL	COUNTY LAKE	TOTAL SHEETS 86	SHEET NO. 29
				CONTRACT # 63344
ILLINOIS FED. AID PROJECT				

GHA #4135.800