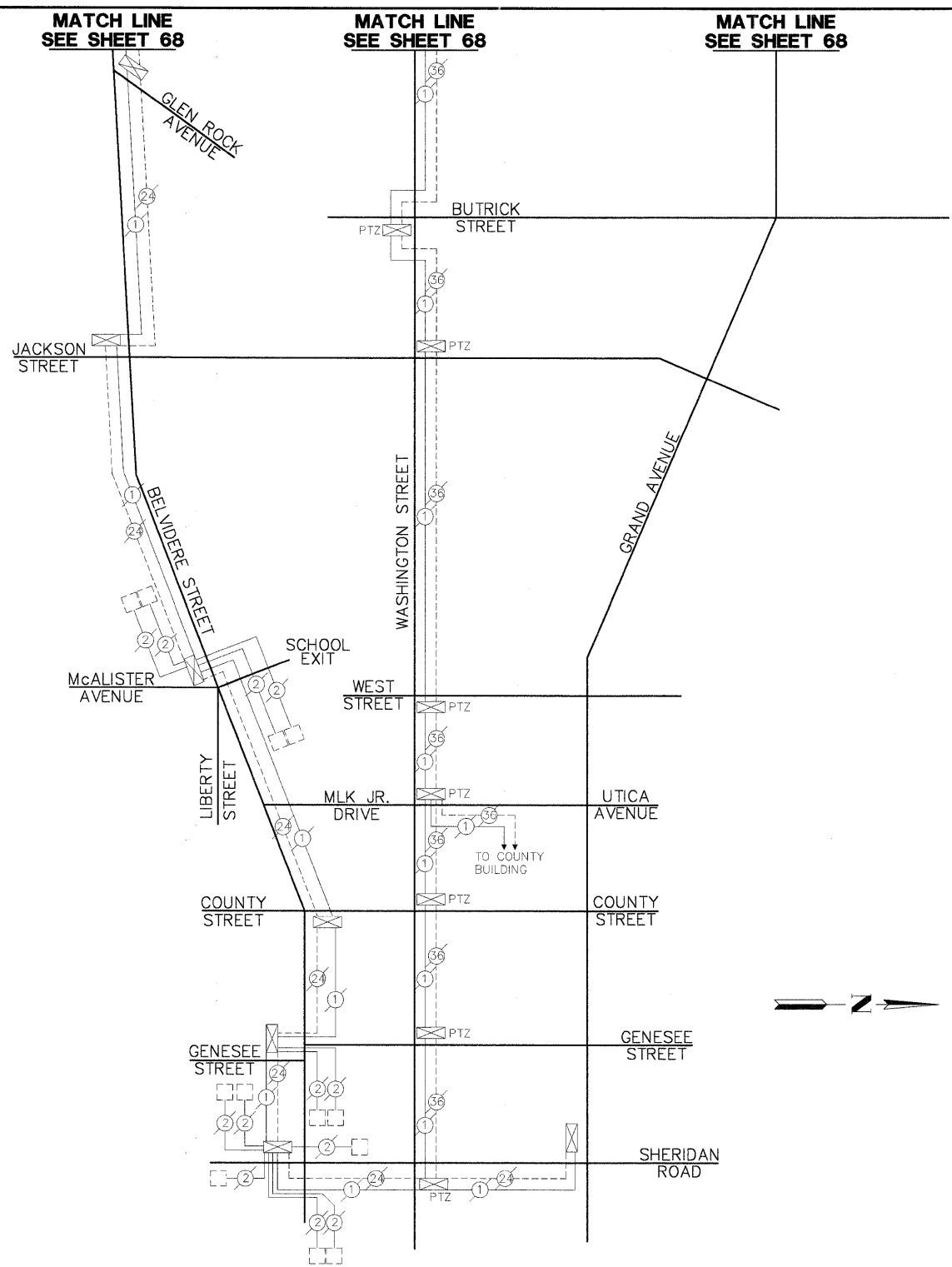


SCHEDULE OF QUANTITIES

LEWIS AVENUE FROM 14TH STREET TO ROSECRANS ROAD (IL RTE 173) INTERCONNECT

NO.	QUANT.	UNIT
1.	2,000	SQ.YD. TOPSOIL FURNISH AND PLACE, 4"
2.	2,000	SQ.YD. SODDING, SALT TOLERANT
3.	10	UNIT SUPPLEMENTAL WATERING
4.	1,800	SQ.FT. PORTLAND CEMENT CONCRETE SIDEWALK, 5"
5.	1,000	SQ.FT. TEMPORARY SIDEWALK
6.	1,800	SQ.FT. SIDEWALK REMOVAL
7.	14,490	FOOT CONDUIT IN TRENCH, 2" DIA., GALVANIZED STEEL
8.	13,255	FOOT CONDUIT PUSHED, 2" DIA., GALVANIZED STEEL
9.	40	EACH HANDHOLE
10.	14,450	FOOT TRENCH AND BACKFILL FOR ELECTRICAL WORK
11.	7	EACH MAINTENANCE OF EXISTING TRAFFIC SIGNAL INSTALLATION (SPECIAL)
12.	3	EACH DRILL EXISTING HANDHOLE
13.	1	EACH REMOVE EXISTING TRAFFIC SIGNAL EQUIPMENT
14.	30,679	FOOT ELECTRIC CABLE IN CONDUIT, TRACER NO. 14 1C
15.	45,179	FOOT FIBER OPTIC CABLE IN CONDUIT, 24 SINGLEMODE
16.	1	EACH OPTIMIZE TRAFFIC SIGNAL SYSTEM (SPECIAL)
17.	36	EACH TERMINATE FIBER IN CABINET
18.	12	EACH SPLICE FIBER IN CABINET
19.	1	EACH VIDEO ENCODER
20.	1	EACH LAYER III FIBER OPTIC TRANSCEIVER MODULE, SFP TYPE, LONG DISTANCE
21.	1	EACH LAYER III FIBER OPTIC TRANSCEIVER MODULE, GBIC TYPE, LONG DISTANCE
22.	7	EACH UPGRADE EXISTING CONTROLLER TO NTCIP (SPECIAL)
23.	1	EACH LAYER II (DATA LINK) SWITCH

* THE LAYER III FIBER OPTIC TRANSCEIVER MODULE, GBIC TYPE, LONG DISTANCE SHALL BE INSTALLED IN THE ISTHA BUILDING (M4) LOCATED AT I-94 (TRI-STATE TOLLWAY) AND ILL. RTE 132 (GRAND AVE). THE CONTRACTOR SHALL COORDINATE WITH LAKE COUNTY DIVISION OF TRANSPORTATION (847) 377-7400 AND ILLINOIS STATE HIGHWAY AUTHORITY (630) 241-6800.

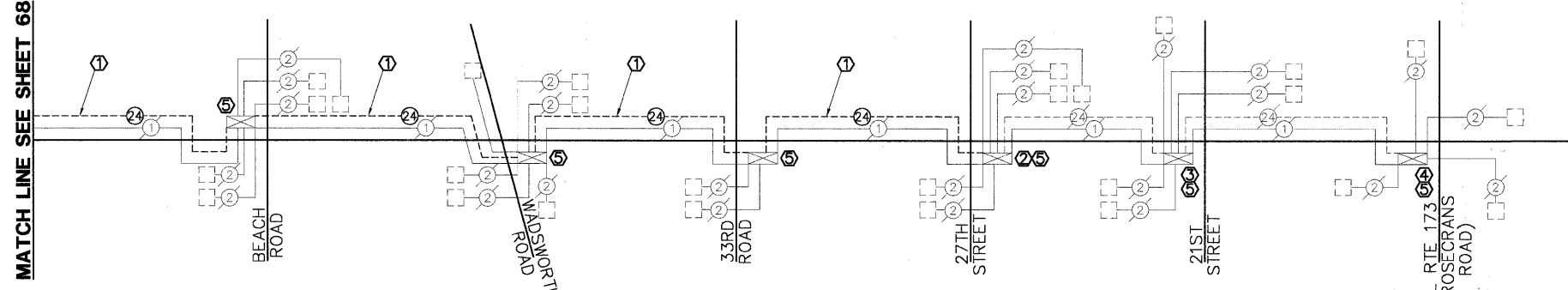


INTERCONNECT SCHEMATIC LEGEND

EXISTING INTERSECTION CONTROLLER		EXISTING FIBER OPTIC CABLE IN CONDUIT, NO. 62.5/125, MM12F SM12F	
PROPOSED INTERSECTION CONTROLLER		PROPOSED FIBER OPTIC CABLE IN CONDUIT, NO. 62.5/125, MM12F SM12F	
EXISTING MASTER CONTROLLER		EXISTING INTERCONNECT CABLE - NO. 62.5/125 12F FIBER OPTIC CABLE	
PROPOSED MASTER CONTROLLER		PROPOSED INTERCONNECT CABLE - NO. 18 3 PAIR TWISTED, SHIELDED	
MASTER MASTER CONTROLLER		EXISTING INTERCONNECT CABLE - NO. 18 3 PAIR TWISTED, SHIELDED	
EXISTING INTERSECTION & SAMPLING (SYSTEM) DETECTORS		PROPOSED INTERCONNECT CABLE - NO. 18 3 PAIR TWISTED, SHIELDED	
PROPOSED INTERSECTION & SAMPLING (SYSTEM) DETECTORS		EXISTING LOOP DETECTOR CABLE 2/C TWISTED, SHIELDED	
EXISTING INTERSECTION LOOP DETECTORS		PROPOSED LOOP DETECTOR CABLE 2/C TWISTED, SHIELDED	
PROPOSED SAMPLING (SYSTEM) DETECTORS		EXISTING ELECTRIC CABLE, 1/C (AS SPECIFIED)	
EXISTING SAMPLING (SYSTEM) DETECTORS		PROPOSED ELECTRIC CABLE, 1/C (AS SPECIFIED)	
PROPOSED SAMPLING (SYSTEM) DETECTORS		EXISTING INTERCONNECT CABLE - NO. 62.5/125, 36F FIBER OPTIC CABLE	
EXISTING SAMPLING (SYSTEM) DETECTORS, PROPOSED INTERSECTION AND SAMPLING (SYSTEM) DETECTORS		PROPOSED FIBER OPTIC CABLE IN CONDUIT - 24 SINGLEMODE	
EXISTING SAMPLING (SYSTEM) DETECTORS, PROPOSED SAMPLING (SYSTEM) DETECTORS		EXISTING TELEPHONE CONNECTION	
EXISTING PREFORMED INTERSECTION & SAMPLING (SYSTEM) DETECTORS		PROPOSED TELEPHONE CONNECTION	
PROPOSED PREFORMED INTERSECTION & SAMPLING (SYSTEM) DETECTORS		EXISTING ISDN TELEPHONE CONNECTION	
EXISTING SAMPLING (SYSTEM) PREFORMED DETECTORS		PROPOSED ISDN TELEPHONE CONNECTION	
PROPOSED SAMPLING (SYSTEM) PREFORMED DETECTORS			

CONSTRUCTION NOTES:

- 1 THE CONTRACTOR SHALL INSTALL NEW FIBER OPTIC CABLE IN CONDUIT, 24 SINGLEMODE FROM YORK HOUSE ROAD TO 27TH STREET IN THE EXISTING INTERCONNECT CONDUIT. ALL FIBER TERMINATIONS AND/OR SPLICES REQUIRED AT THE EXISTING INTERSECTIONS OF BEACH ROAD, WADSWORTH ROAD, 33RD ROAD, AND 27TH STREET ARE INCLUDED IN THE PAY ITEM "FIBER OPTIC CABLE IN CONDUIT, 24 SINGLEMODE".
- 2 THE CONTRACTOR SHALL INCLUDE 6 NEW TERMINATIONS OF THE EXISTING FIBER OPTIC CABLE. 6 ADDITIONAL TERMINATIONS AND 6 SPLICES WILL ALSO BE CONSIDERED INCIDENTAL TO THE NEW "FIBER OPTIC CABLE IN CONDUIT, 24 SINGLEMODE".
- 3 THE CONTRACTOR SHALL INCLUDE 12 NEW TERMINATIONS AND 6 NEW SPLICES OF THE EXISTING FIBER OPTIC CABLE.
- 4 THE CONTRACTOR SHALL INCLUDE 12 NEW TERMINATIONS OF THE EXISTING FIBER OPTIC CABLE.
- 5 THE CONTRACTOR SHALL UPGRADE THE EXISTING CONTROLLER TO NTCIP COMPLIANCY. MAINTENANCE OF EXISTING TRAFFIC SIGNAL INSTALLATION (SPECIAL) SHALL BE PAID FOR SEPARATELY.



FILE NAME = 4135.315-TRI.dwg

USER NAME = GHA
 DESIGNED - JRD
 DRAWN - ZCW
 CHECKED - DPB
 PLOT DATE = 10/19/2009

DESIGNED - JRD
 DRAWN - ZCW
 CHECKED - DPB
 DATE - 10/19/09

REVISED - 9/15/09 (LCDOT)
 REVISED - 9/25/09 (IDOT)
 REVISED - 10/19/09 (LCDOT)
 REVISED -



INTERCONNECT SCHEMATIC (SHEET 2 OF 2)
 LEWIS AVENUE FROM 14TH ST TO ROSECRANS RD (IL RTE 173)
 SCALE: NONE SHEET NO. 69 OF 86 SHEETS STA. TO STA.

F.A.P. RTE.	SECTION	COUNTY	TOTAL SHEETS	SHEET NO.
2730	08-00259-00-TL	LAKE	86	69
CONTRACT #:			63344	

ILLINOIS FED. AID PROJECT

GHA #4135.800