

F.A.P. RTE.	SECTION	COUNTY	TOTAL SHEETS	SHEET NO.
2730	08-00259-00-TL	LAKE	85	77
VIDEO DETECTION DETAILS				
ILLINOIS				

CONTRACT NO: 63344

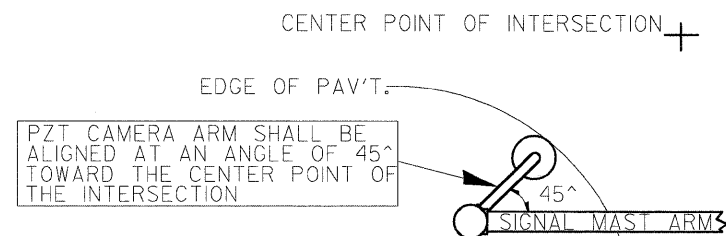
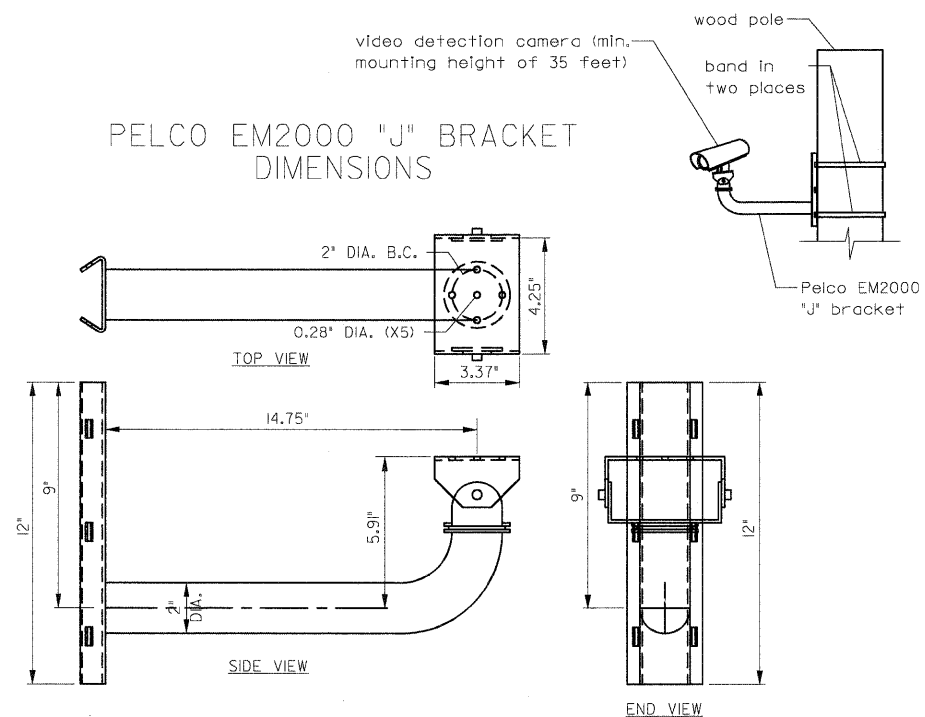
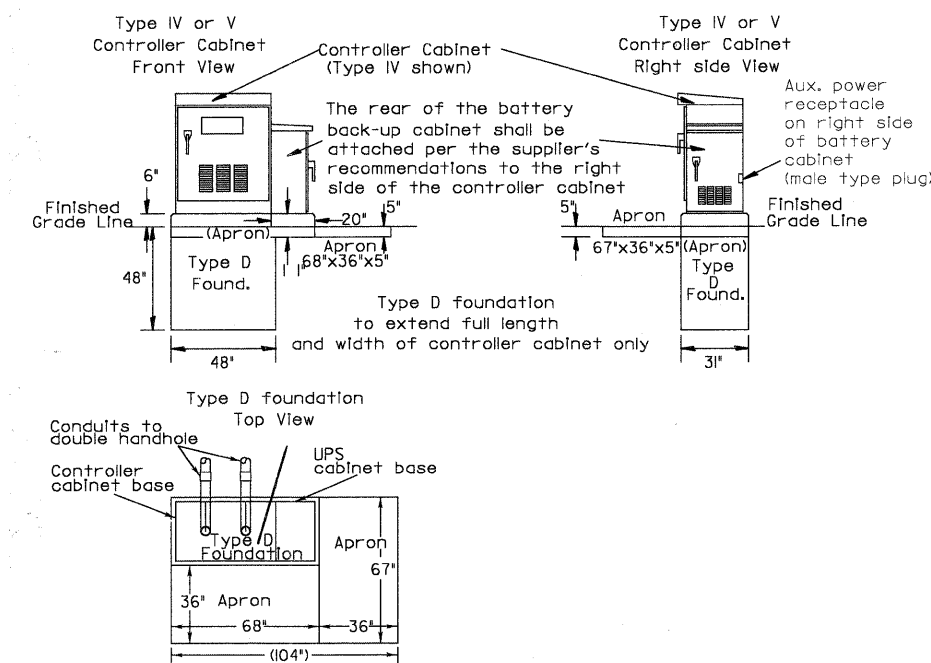


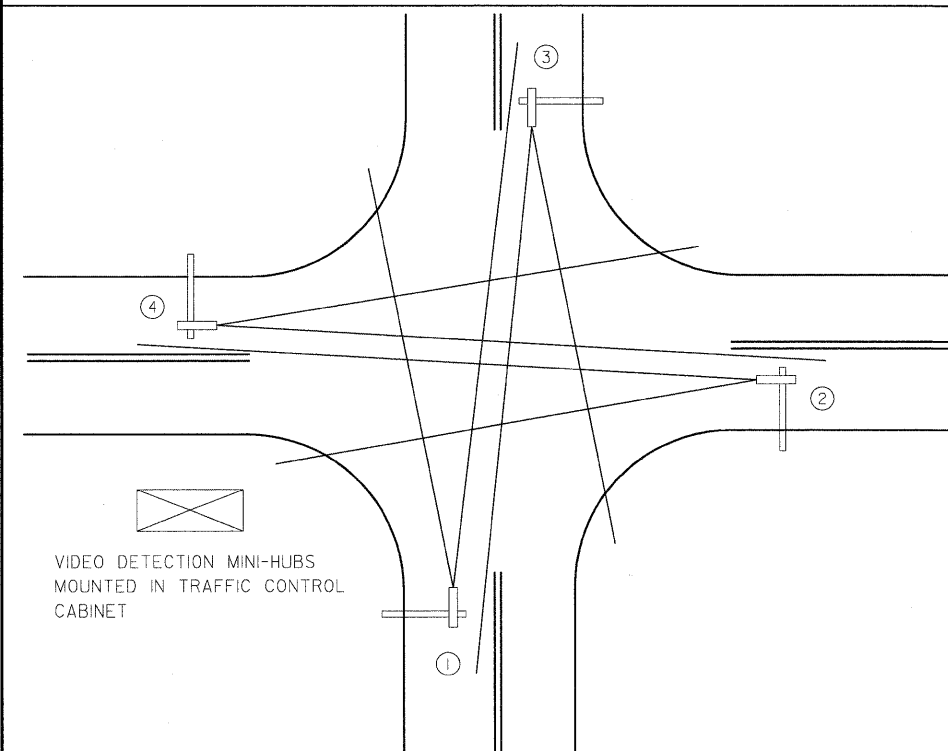
IMAGE SENSOR AND JUNCTION BOX MOUNTING DETAILS
(NO SCALE)



VIDEO DETECTION CAMERA MOUNTING
DETAIL FOR TEMPORARY TRAFFIC SIGNALS
(NOT TO SCALE)

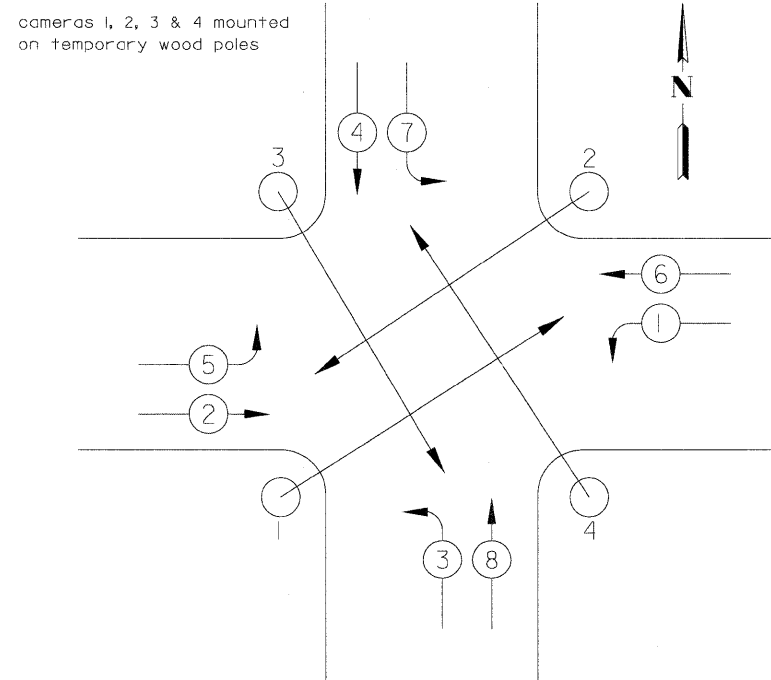


UNINTERRUPTIBLE POWER SUPPLY (UPS)
CABINET INSTALLATION DETAIL
(NOT TO SCALE)



TYPICAL VIDEO VEHICLE DETECTION SYSTEM

(NOT TO SCALE)
(4) MACHINE VISION PROCESSOR ASSEMBLIES AND BRACKETS ① ② ③ ④
POWER CABLE TO EACH MACHINE VISION PROCESSOR (24 VAC)



VIDEO DETECTION CAMERA ASSIGNMENT
FOR TEMPORARY TRAFFIC SIGNALS
(NOT TO SCALE)

FILE NAME = 4135.315-TR1.dwg	USER NAME = GHA	DESIGNED - JRD	REVISED - 9/15/09 (LCDOT)
		DRAWN - ZCW	REVISED - 9/25/09 (IDOT)
		CHECKED - DPB	REVISED - 10/19/09 (LCDOT)
		DATE - 10/19/09	REVISED -



DETAIL SHEET

SCALE: NONE SHEET NO. 77 OF 86 SHEETS STA. TO STA.

REVISIONS	DATE
UPS SCHEMATIC REVISED	2/1/07
MOUNTING DETAILS REVISED	5/1/08

APPROVED BY: A. KHAWAJA
DATE: APRIL 1, 2007
Lake County Division of Transportation

VIDEO DETECTION DETAILS

F.A.P. RTE.	SECTION	COUNTY	TOTAL SHEETS	SHEET NO.
2730	08-00259-00-TL	LAKE	86	77
CONTRACT #: 63344				
ILLINOIS FED. AID PROJECT				

LC8900