

F.A.U. RTE.	SECTION	COUNTY	TOTAL SHEETS	SHEET NO.
2572	09-00013-00-RS	LAKE	10	1
CONTRACT NO. 63358				
ILLINOIS FED. AID PROJECT				

**STATE OF ILLINOIS
DEPARTMENT OF TRANSPORTATION
DIVISION OF HIGHWAYS**

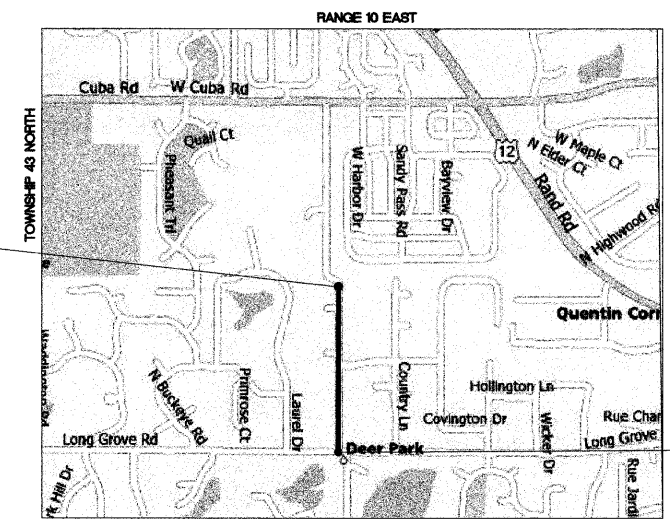
PLANS FOR PROPOSED FEDERAL AID HIGHWAY

**FAU 2572/ DEERPATH ROAD
LONG GROVE RD TO SWALLOW CT
SECTION: 09-00013-00-RS
JOB NO. C-91-897-09
PROJECT NO. ARA-9003(452)
VILLAGE OF DEER PARK, ILLINOIS
LAKE COUNTY**

LOCATION MAP
(NOT TO SCALE)



LOCATION OF SECTION INDICATED THIS:



DEERPATH ROAD
PROJECT ENDS
STA 22+98

DEERPATH ROAD
PROJECT BEGINS
STA. 00+36

PROJECT INFORMATION
LENGTH OF PROJECT = 2262 FT (.43 MI)
ADT = 1350 VPD (2007)
POSTED SPEED LIMIT = 25 MPH
DESIGN SPEED LIMIT = 30 MPH
ROAD CLASSIFICATION = URBAN COLLECTOR

**GHA GEWALT HAMILTON
ASSOCIATES, INC.**
850 Forest Edge Drive ■ Vernon Hills, IL 60061
Phone: 847-478-9700 Fax: 847-478-9701

PROFESSIONAL ENGINEER'S SIGNATURE & SEAL

Leo X. Morand

LEO X. MORAND
008-08083
LICENSED
PROFESSIONAL
ENGINEER
STATE OF ILLINOIS

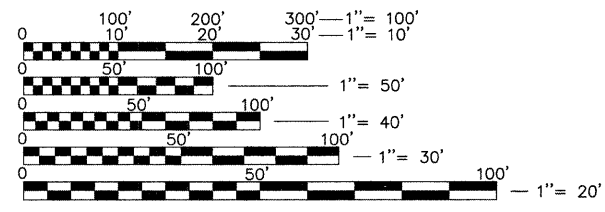
EXPIRES: 11-30-09

**PRINTED BY THE AUTHORITY
OF THE STATE OF ILLINOIS**

INDEX OF SHEETS

1. COVER SHEET, INDEX OF SHEETS, LIST OF STATE STANDARDS
2. GENERAL NOTES & SUMMARY OF QUANTITIES
3. TYPICAL SECTIONS
4. PROPOSED CONDITIONS - PLAN VIEW
- 5.-10. CONSTRUCTION DETAILS

FULL SIZE PLANS HAVE BEEN PREPARED USING STANDARD ENGINEERING SCALES. REDUCED SIZED PLANS WILL NOT CONFORM TO STANDARD SCALES. IN MAKING MEASUREMENTS ON REDUCED PLANS, THE BELOW SCALES MAY BE USED.



J.U.L.I.E.

**Know what's below.
Call before you dig.**

JOINT UTILITY LOCATION INFORMATION FOR EXCAVATION CALL 811

EXISTING UTILITIES: WHEN THE PLANS OR SPECIAL PROVISIONS INCLUDE INFORMATION PERTAINING TO THE LOCATION OF UNDERGROUND UTILITY FACILITIES, SUCH INFORMATION REPRESENTS ONLY THE OPINION OF THE ENGINEER AS TO THE LOCATION OF SUCH UTILITIES AND IS ONLY INCLUDED FOR THE CONVENIENCE OF THE BIDDER. THE ENGINEER AND OWNER ASSUME NO RESPONSIBILITY WHATSOEVER IN RESPECT TO THE SUFFICIENCY OR ACCURACY OF THE INFORMATION SHOWN ON THE PLANS RELATIVE TO THE LOCATION OF UNDERGROUND UTILITY FACILITIES OR THE MANNER IN WHICH THEY ARE TO BE REMOVED OR ADJUSTED. IT SHALL BE THE CONTRACTOR'S RESPONSIBILITY TO DETERMINE THE ACTUAL LOCATION OF ALL SUCH FACILITIES. HE SHALL ALSO OBTAIN FROM THE RESPECTIVE UTILITY COMPANIES, DETAILED INFORMATION RELATIVE TO THE LOCATION OF THEIR FACILITIES AND THE WORKING SCHEDULES OF THE UTILITY COMPANIES FOR REMOVING OR ADJUSTING THEM.

CONTRACTOR IS RESPONSIBLE FOR CONTACTING J.U.L.I.E. AT 1-800-892-0123 AND MUST ACQUIRE A DIG NUMBER A MINIMUM OF 72 HOURS PRIOR TO ANY WORK BEING DONE.

NOTE:
THE CONTRACTOR IS SOLELY RESPONSIBLE
FOR JOBSITE SAFETY.

CONTRACT NO. 63358

FILE NAME =
8938.175DEERPATH RD.DWG

ASSOCIATE FIELD ENGINEER: KEVIN STALLWORTH (847) 705-4169