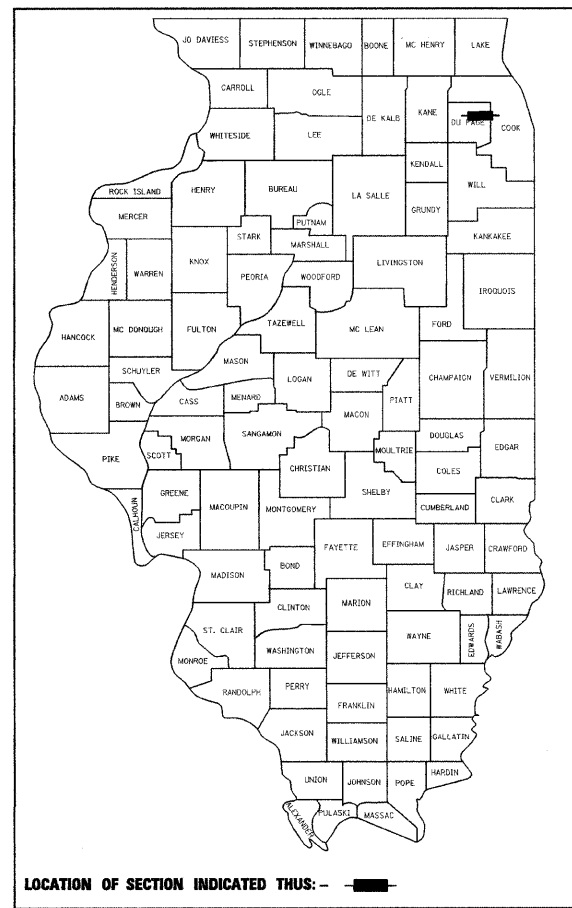


F.A.U. RTE.	SECTION	COUNTY	TOTAL SHEETS	SHEET NO.
1375	09-00054-00-RS	DUPAGE	19	1

CONTRACT NO. 63369

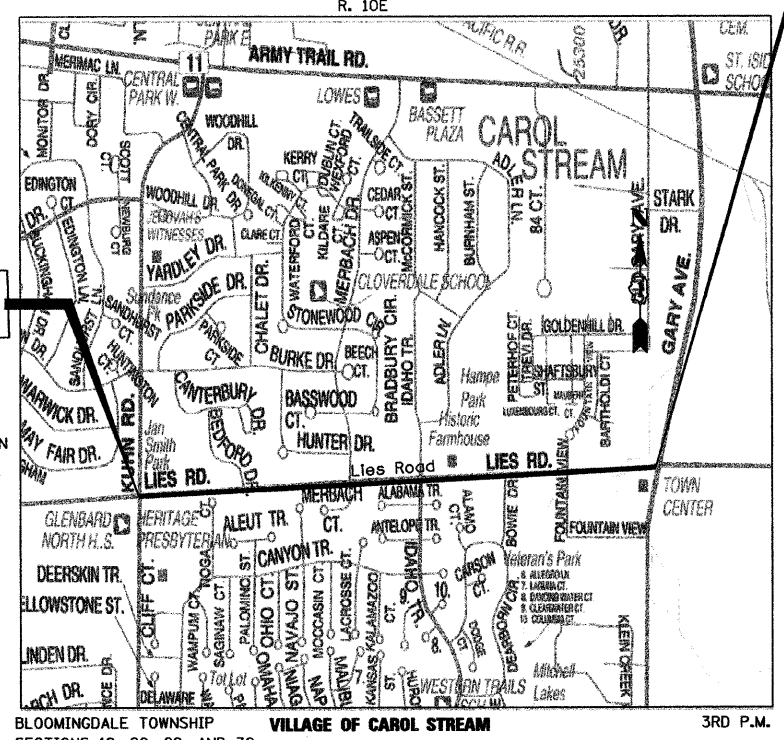
STATE OF ILLINOIS
DEPARTMENT OF TRANSPORTATION
DIVISION OF HIGHWAYS
**PLANS FOR PROPOSED
FEDERAL AID HIGHWAY PROJECT**

FAU ROUTE 1375 (LIES ROAD)
KUHN ROAD TO GARY AVENUE
LAPP RESURFACING
SECTION 09-00054-00-RS
PROJECT ARA-9003(400)
DUPAGE COUNTY
JOB NO. C-91-807-09

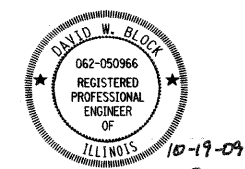


PROJECT ENDS
STATION 157+93

PROJECT BEGINS
STATION 104+07



LOCATION MAP
NOT TO SCALE
PROJECT LENGTH (GROSS / NET)
LIES ROAD 5,386 FT (1.02 MILES)



DAVID W. BLOCK, P.E.
NO. 062-050966
EXP. DATE 11/30/09

INDEX OF SHEETS

- 1 COVER SHEET AND INDEX OF SHEETS
- 2 GENERAL NOTES, HIGHWAY STANDARDS, AND SUMMARY OF QUANTITIES
- 3 TYPICAL SECTIONS
- 4-6 PLAN SHEETS
- 7-9 PAVEMENT MARKING SHEETS
- 10 BD-08 FRAMES AND LIDS ADJUSTMENT WITH MILLING
- 11 BD-22 PAVEMENT PATCHING FOR HMA SURFACED PAVEMENT
- 12 BD-24 CURB OR CURB AND GUTTER REMOVAL AND REPLACEMENT
- 13 BD-32 BUTT JOINT AND HMA TAPER DETAILS
- 14 TC-10 TRAFFIC CONTROL AND PROTECTION FOR SIDE ROADS, INTERSECTIONS AND DRIVEWAYS
- 15 TC-13 DISTRICT ONE TYPICAL PAVEMENT MARKINGS
- 16 TC-16 PAVEMENT MARKING LETTERS AND SYMBOLS FOR TRAFFIC STAGING
- 17 TC-22 ARTERIAL ROAD INFORMATION SIGN
- 18 TC-26 DRIVEWAY ENTRANCE SIGNING
- 19 TS-07 DETECTOR LOOP INSTALLATION DETAILS FOR ROADWAY RESURFACING

FOR INDEX OF HIGHWAY STANDARDS, SEE SHEET NO. 2

TRAFFIC DATA

ADT:
LIES ROAD 12,600 VPD (2008) 16,000 VPD (2030)

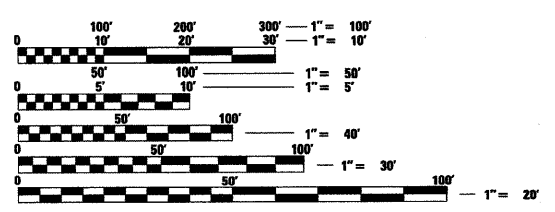
POSTED SPEED

DESIGN SPEED
35 MPH (EXISTING) 40 MPH (EXISTING)
35 MPH (PROPOSED) 40 MPH (PROPOSED)

PROJECT IS LOCATED IN
THE VILLAGE OF CAROL STREAM

DESCRIPTION OF IMPROVEMENT

THIS IMPROVEMENT CONSISTS OF A 3" MILL AND 3" RESURFACING, REMOVING AND REPLACING DETERIORATED PORTIONS OF CURB AND GUTTER AND SIDEWALKS, PAVEMENT PATCHING, STRUCTURE ADJUSTMENTS OR RECONSTRUCTION, STRIPING, AND ALL INCIDENTAL AND COLLATERAL WORK AS NECESSARY TO COMPLETE THE IMPROVEMENT SHOWN HEREIN AND AS DESCRIBED IN THE SPECIFICATIONS.



FULL SIZE PLANS HAVE BEEN PREPARED USING STANDARD ENGINEERING SCALES. REDUCED SIZED PLANS WILL NOT CONFORM TO STANDARD SCALES. IN MAKING MEASUREMENTS ON REDUCED PLANS, THE ABOVE SCALES MAY BE USED.

J.U.L.I.E.
JOINT UTILITY LOCATION INFORMATION FOR EXCAVATION
1-800-892-0123
OR 811

CONTRACT NO. 63369

STATE OF ILLINOIS
DEPARTMENT OF TRANSPORTATION
DIVISION OF HIGHWAYS

APPROVED 10/19/2009
[Signature]
VILLAGE OF CAROL STREAM, VILLAGE ENGINEER

PASSED OCTOBER 26, 2009
[Signature]
DISTRICT 1 ENGINEER OF LOCAL ROADS & STREETS

RELEASING FOR BID
BASED ON LIMITED
REVIEW OCTOBER 26, 2009
[Signature]
DEPUTY DIRECTOR OF HIGHWAYS, REGION 1 ENGINEER

**PRINTED BY THE AUTHORITY
OF THE STATE OF ILLINOIS**

IDOT FEDERAL AID DESIGN ENGINEER
MARILYN SOLOMON 847/705-4407

1051 PERIMETER DRIVE, SUITE 1025
SCHAUMBURG, ILLINOIS 60173
(847) 805-8800

