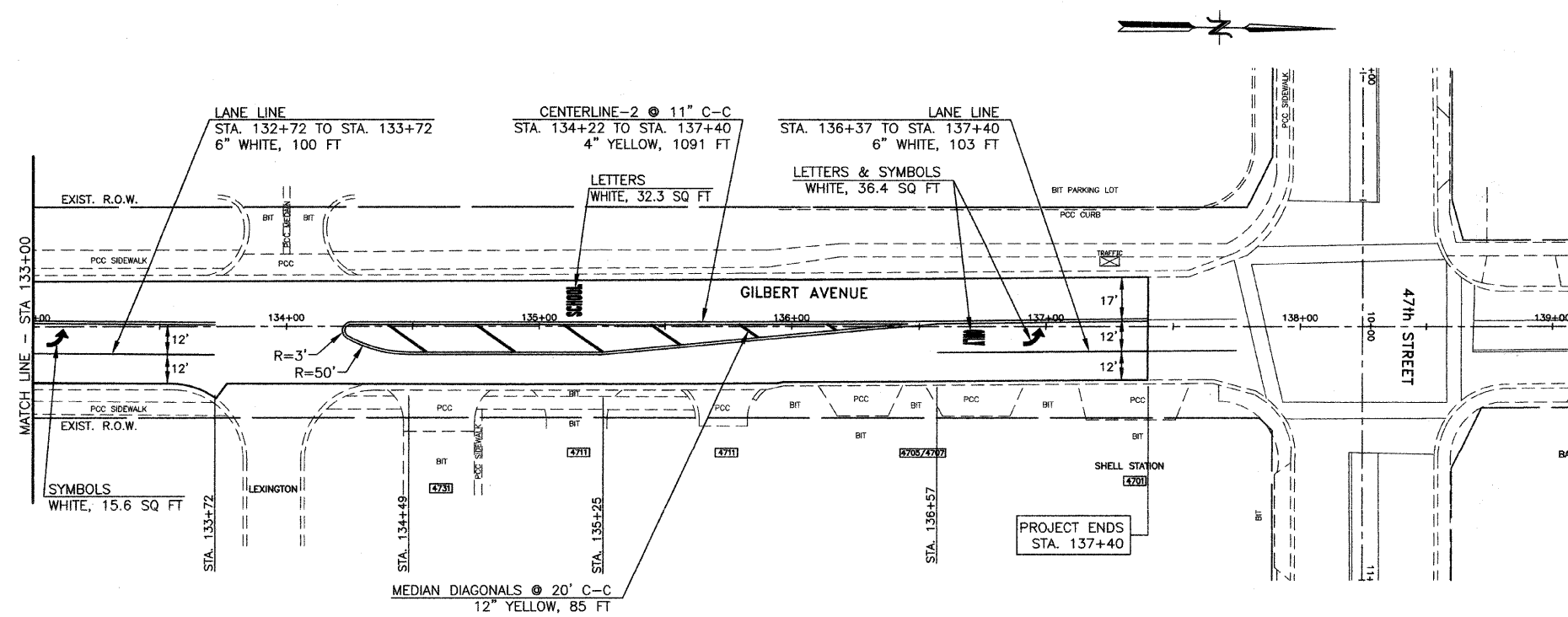


F.A.U. RTE.	SECTION	COUNTY	TOTAL SHEETS	SHEET NO.
2697	09-00089-00-RS	COOK	19	11
STA. 133+00		TO STA. 140+00		
ILLINOIS FED. AID PROJECT				
CONTRACT NO: 63372				

NOTES:
1. ALL MARKINGS SHALL BE THERMOPLASTIC PAVEMENT MARKINGS.



REVISIONS	
NAME	DATE

ILLINOIS DEPARTMENT OF TRANSPORTATION
F.A.U. ROUTE 2697
GILBERT AVENUE

PAVEMENT MARKING PLAN

JJB JAMES J. BENES & ASSOCIATES, INC.
950 Warrenville Road, Suite 101, Lisle, Illinois 60532
Tel. (630) 719-7570 • Fax (630) 719-7589

SCALE: 1"=30'
DATE: 10/01/09

DRAWN BY: BCD
CHECKED BY: BDH