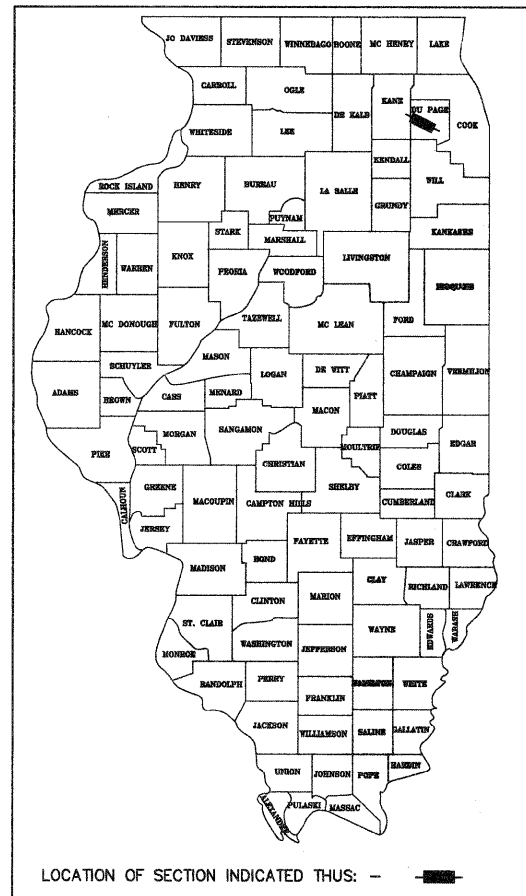


FOR INDEX OF SHEETS, SEE SHEET NO.2

STATE OF ILLINOIS  
 DEPARTMENT OF TRANSPORTATION  
 DIVISION OF HIGHWAYS  
**PLANS FOR PROPOSED  
 FEDERAL AID PROJECT  
 LAPP RESURFACING**  
 BATAVIA ROAD (FAU ROUTE 3553)  
 FROM IL ROUTE 59  
 TO IL ROUTE 56  
 PROJECT NO. ARA-9003(550)  
 SECTION NO. 09-00029-00-RS  
 CITY OF WARRENVILLE  
 DUPAGE COUNTY  
 JOB NO. C-91-749-09

|                     |                |                         |              |           |
|---------------------|----------------|-------------------------|--------------|-----------|
| F.A.U. RTE.         | SECTION        | COUNTY                  | TOTAL SHEETS | SHEET NO. |
| 3553                | 09-00029-00-RS | DUPAGE                  | 27           | 1         |
| FED. ROAD DIST. NO. | ILLINOIS       | FED. AID PROJECT - LAPP |              |           |
| CONTRACT NO. 63373  |                |                         |              |           |

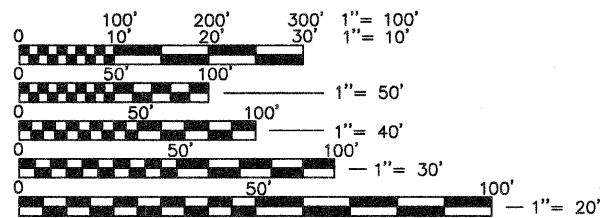


PROJECT LOCATED IN THE CITY OF WARRENVILLE

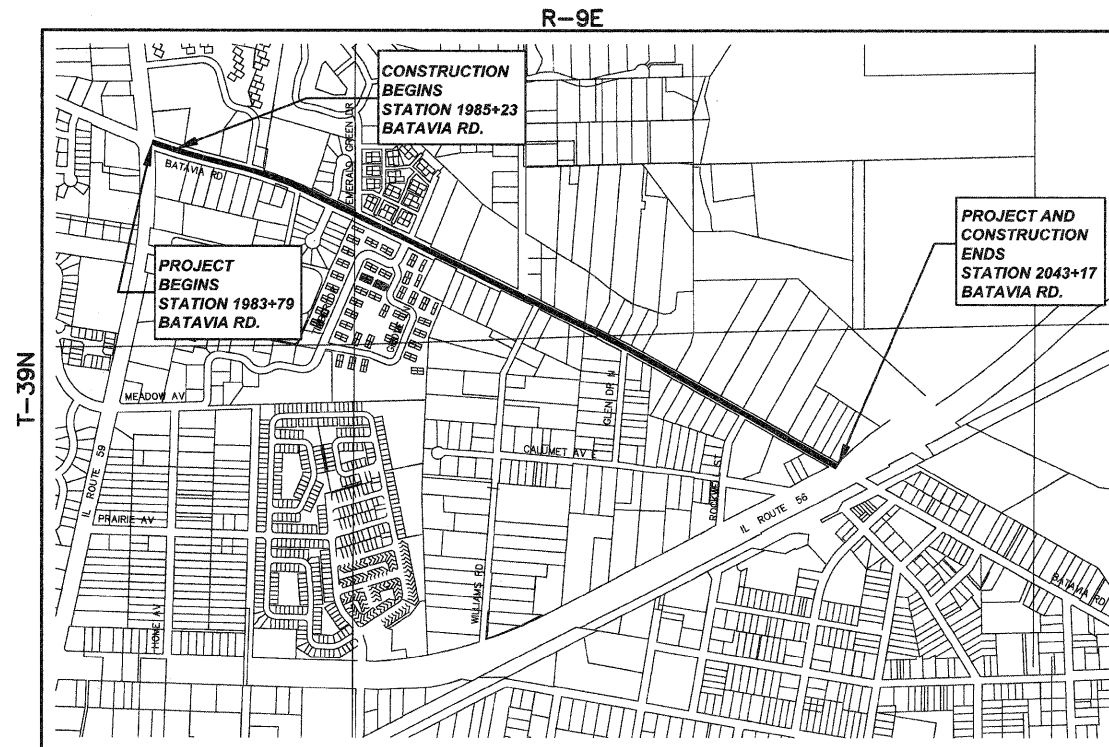
DESIGN DESIGNATION

BATAVIA ROAD: URBAN MINOR ARTERIAL  
 DESIGN SPEED = 40 M.P.H.  
 POSTED SPEED = 35 M.P.H.  
 ADT(2006) = 8800

FIELD ENGINEER: MARILIN SOLOMON (847) 705-4407  
 CONSULTING ENGINEER: ENGINEERING ENTERPRISES, INC.  
 CONTACT: JASON M. BAUER (630)-466-6700



FULL SIZE PLANS HAVE BEEN PREPARED USING STANDARD ENGINEERING SCALES, REDUCED SIZED PLANS WILL NOT CONFORM TO STANDARD SCALES, IN MAKING MEASUREMENTS ON REDUCED PLANS, THE ABOVE SCALES MAY BE USED.



S 1/2 SEC. 27, NE 1/4 SEC. 34, NW 1/4 SEC 35, T-39N, R-9E 3RD P.M.

**LOCATION MAP**  
 N.T.S.

GROSS LENGTH OF PROJECT = 5,938 FEET (1.12 MILES)  
 NET LENGTH OF PROJECT = 5,794 FEET (1.10 MILES)

TOPOGRAPHICAL INFORMATION FROM SURVEY BY ENGINEERING ENTERPRISES, INC.

|   |   |
|---|---|
| STATE OF ILLINOIS<br>DEPARTMENT OF TRANSPORTATION<br>DIVISION OF HIGHWAYS |   |
| APPROVED  | 10/16/2009<br><i>Michael Smith</i><br>CITY OF WARRENVILLE, SUPERINTENDENT OF PUBLIC WORKS     |
| PASSED  | OCTOBER 26, 2009<br><i>Chris Healy</i><br>DISTRICT 1 ENGINEER OF LOCAL ROADS & STREETS        |
| RELEASING FOR BID<br>BASED ON LIMITED<br>REVIEW                           | OCTOBER 26, 2009<br><i>Diana M. O'Keefe</i><br>DEPUTY DIRECTOR OF HIGHWAYS, REGION 1 ENGINEER |

DATE: 10-16-09

BY: *JMB*  
JASON M. BAUER

LICENSE EXPIRES: NOVEMBER 30, 2009

SEAL

**811**  
 Know what's below.  
 Call before you dig.

JULIE  
 JOINT  
 UTILITY  
 LOCATION  
 INFORMATION FOR  
 EXCAVATION  
 CALL 811

CONTRACT NO. 63373

**Engineering Enterprises, Inc.**  
 CONSULTING ENGINEERS  
 52 Wheeler Road  
 Sugar Grove, Illinois 60554  
 P: 630.466.6700 - W: www.eeiweb.com

PRINTED BY THE AUTHORITY OF THE STATE OF ILLINOIS

Plotted: October 15, 2009 @ 9:57 AM By: Terri Seiler-Johnson - Tab: 01 Cover 22x33  
 FIELD ENGINEER: MARILIN SOLOMON (847) 705-4407  
 CONSULTING ENGINEER: ENGINEERING ENTERPRISES, INC.  
 CONTACT: JASON M. BAUER (630)-466-6700  
 COPYRIGHT © 2009 ENGINEERING ENTERPRISES, INC.