

F.A.U. RTE.	SECTION	COUNTY	TOTAL SHEETS	SHEET NO.
1351	06-00090-00-PV	COOK	137	1
FED. ROAD DIST. NO. 1		ILLINOIS	CONTRACT NO. 63378	

137 Sheets

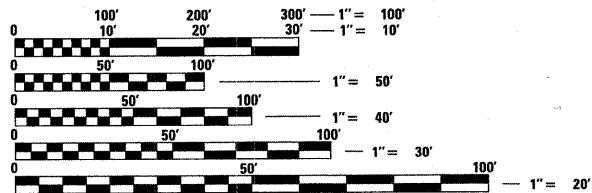
INDEX OF SHEETS

SHEET NO.	DESCRIPTION
1	COVER SHEET
2-3	GENERAL NOTES AND STATE STANDARDS
4-11	SUMMARY OF QUANTITIES
12-13	TYPICAL SECTIONS
14	SCHEDULE OF QUANTITIES
15-16	ALIGNMENT AND BENCHMARKS
17-26	PLAN AND PROFILE
27	MAINTENANCE OF TRAFFIC GENERAL NOTES AND TYPICAL SECTIONS
28-31	MAINTENANCE OF TRAFFIC
32	DETOUR NOTES
33	DETOUR PLAN
34-35	EROSION CONTROL AND LANDSCAPING PLANS
36-45	DRAINAGE AND UTILITIES
46-48	INTERSECTION GRADING PLANS
49-62	PLAT OF HIGHWAYS
63-64	JOINTING PLANS
65-66	PAVEMENT MARKING PLANS
67-68	SIGNING PLANS
69-70	TEMPORARY TRAFFIC SIGNAL - WRIGHT BLVD / IRVING PARK RD
71-73	TRAFFIC SIGNAL MODIFICATION - WRIGHT BLVD / IRVING PARK RD
74-76	TRAFFIC SIGNAL MODIFICATION - WRIGHT BLVD / EB FRONTAGE RD
77-79	TRAFFIC SIGNAL MODIFICATION - WRIGHT BLVD / WB FRONTAGE RD
80-81	TEMPORARY TRAFFIC SIGNAL - WRIGHT BLVD / WISE RD
82	TEMPORARY INTERCONNECT DETAIL
83-85	TRAFFIC SIGNAL MODIFICATION - WRIGHT BLVD / WISE RD
86-89	INTERCONNECT PLAN
90-93	TRAFFIC SIGNAL DETAILS
94-100	STREET LIGHTING PLANS
101-103	STREET LIGHTING DETAILS
104-107	RETAINING WALL PLANS
108-118	CONSTRUCTION DETAILS
119-137	CROSS SECTIONS

SEE SHEET 3 FOR LIST OF HIGHWAY STANDARDS

DESIGN SPEED: WRIGHT BOULEVARD - 35 MPH
POSTED SPEED: WRIGHT BOULEVARD - 30 MPH

DESIGN DESIGNATIONS:
 WRIGHT BOULEVARD - 11,000 (2030) COLLECTOR 4.040 (PCC-20)
 11,000 (2030) COLLECTOR 2.800 (FD-20)



FULL SIZE PLANS HAVE BEEN PREPARED USING STANDARD ENGINEERING SCALES. REDUCED SIZED PLANS WILL NOT CONFORM TO STANDARD SCALES. IN MAKING MEASUREMENTS ON REDUCED PLANS, THE ABOVE SCALES MAY BE USED.

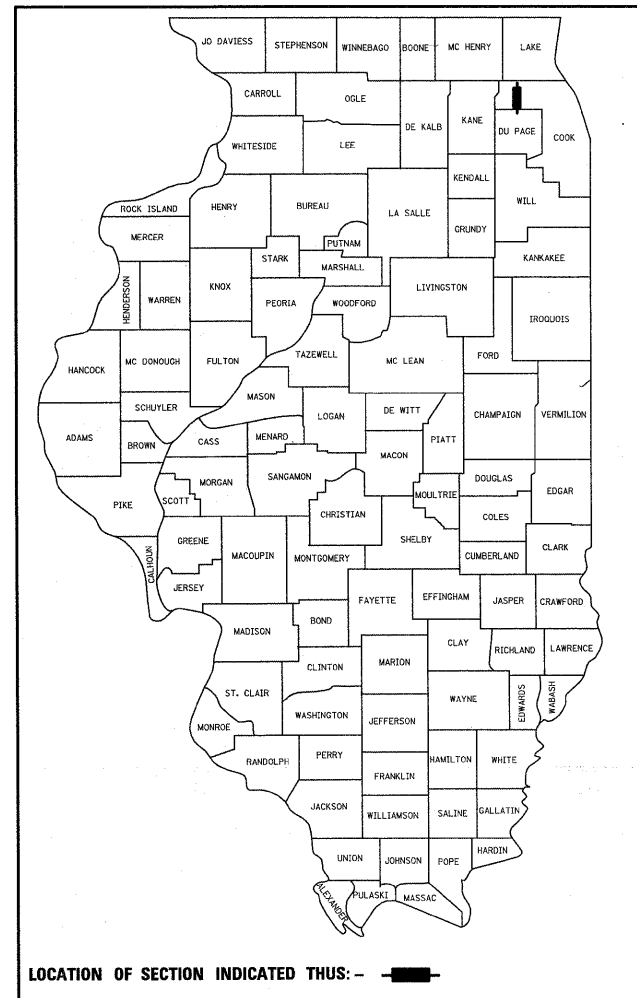
J.U.L.I.E.
 JOINT UTILITY LOCATION INFORMATION FOR EXCAVATION
 1-800-892-0123 OR 811

CONTRACT NO. 63378

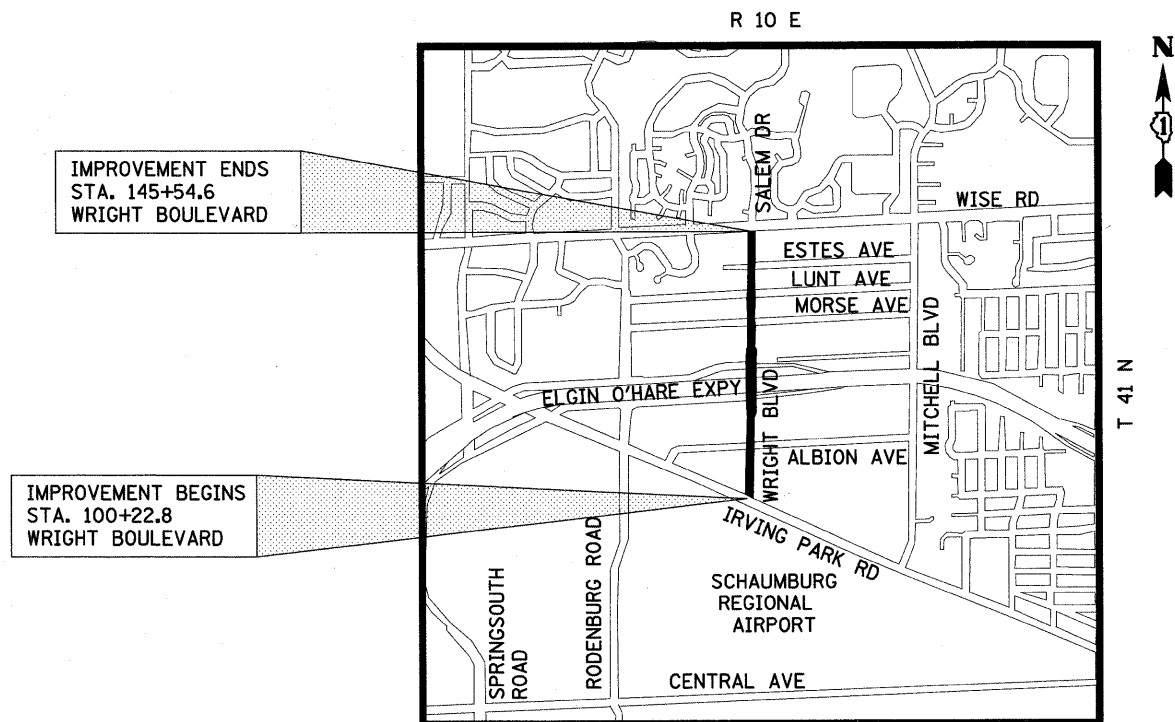
STATE OF ILLINOIS
 DEPARTMENT OF TRANSPORTATION
 DIVISION OF HIGHWAYS

**PROPOSED
 HIGHWAY PLANS**

**FAU ROUTE 1351 (WRIGHT BOULEVARD)
 FAU ROUTE 1321 (IRVING PARK ROAD) TO
 FAU ROUTE 1338 (WISE ROAD)
 SECTION 06-00090-00-PV
 PROJECT ARA-M-8003(809)
 ROADWAY CONSTRUCTION, TRAFFIC SIGNAL
 INSTALLATION, MINOR STRUCTURE AND LIGHTING
 VILLAGE OF SCHAUMBURG
 COOK COUNTY
 C-91-233-07**



LOCATION OF SECTION INDICATED THUS: [Symbol]

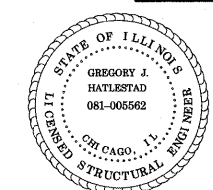
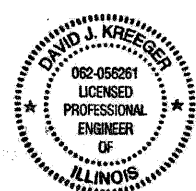


IMPROVEMENT ENDS
 STA. 145+54.6
 WRIGHT BOULEVARD

IMPROVEMENT BEGINS
 STA. 100+22.8
 WRIGHT BOULEVARD

LOCATION MAP
 NOT TO SCALE

PROJECT LENGTH (NET AND GROSS):
 WRIGHT BOULEVARD - 4,531.8 FT. (0.86 MILE)



11/30/10
 EXPIRES

STATE OF ILLINOIS
 DEPARTMENT OF TRANSPORTATION
 DIVISION OF HIGHWAYS

APPROVED: 10-16-09
 [Signature] DIRECTOR OF ENGINEERING AND PUBLIC WORKS

PASSED: OCTOBER 26, 2009
 [Signature] DISTRICT ONE ENGINEER OF LOCAL ROADS & STREETS

RELEASING FOR BID
 BASED ON LIMITED
 REVIEW: OCTOBER 26, 2009
 [Signature] DEPUTY DIRECTOR OF HIGHWAYS, REGION ONE ENGINEER

**PRINTED BY THE AUTHORITY
 OF THE STATE OF ILLINOIS**

ASSOCIATE FIELD ENGINEER: KEVIN STALLWORTH 847-705-4169 SCHAUMBURG, IL
 CONSULTANT ENGINEER: DAVID KREEGER, P.E. CIVILTECH ENGINEERING, INC.

11-30-09
 EXPIRES



450 E. Devon Ave, Suite 300 - Itasca, Illinois 60143
 Tel: 630.773.3900 - Fax: 630.773.3975
 www.civiltechinc.com