

DATE	BY
REVISIONS	PLANNED
ALIGNED	CHECKED
NO.	FILE NAME

DATE	BY
REVISIONS	PLANNED
GRADES	CHECKED
NO.	NOTATION

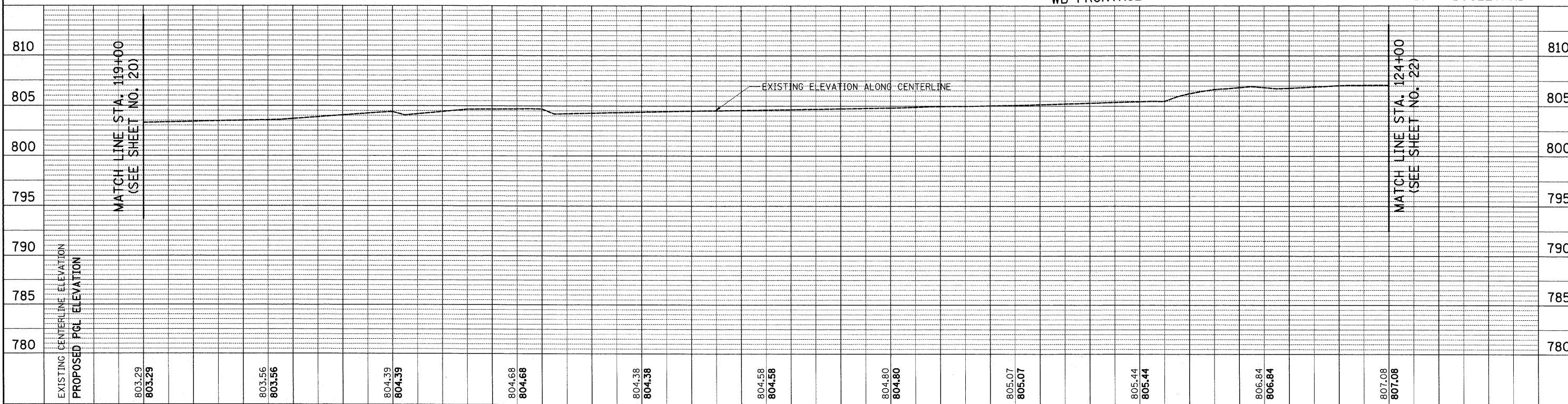
MATCH LINE STA. 119+00
(SEE SHEET NO. 20)

MATCH LINE STA. 124+00
(SEE SHEET NO. 22)

NOTE:
AN ESTIMATED QUANTITY OF CLASS D PATCH, 10 INCH HAS BEEN INCLUDED FOR USE IN REPAIRING THE EXISTING PAVEMENT WITHIN THE RESURFACING SECTION OF THE PROJECT. THE LOCATIONS AND LIMITS OF PATCHING SHALL BE DETERMINED BY THE ENGINEER AFTER THE SURFACE HAS BEEN MILLED BY THE CONTRACTOR.

PROPOSED RESURFACING
- HOT-MIX ASPHALT SURFACE REMOVAL, 2 1/4"
- HOT-MIX ASPHALT SURFACE COURSE, MIX "D", N70 1 1/2"
- POLYMERIZED LEVELING BINDER, MACHINE METHOD, IL-4.75, N50 3/4"

THE CONTRACTOR SHALL MAINTAIN THE EXISTING CLEARANCE BETWEEN WRIGHT BOULEVARD AND THE ELGIN-O'HARE EXPRESSWAY.



FILE NAME = ...oad\sheets\2215_P&P 05.dgn	USER NAME = k+k	DESIGNED - JAT	REVISED -	STATE OF ILLINOIS DEPARTMENT OF TRANSPORTATION	WRIGHT BOULEVARD PLAN & PROFILE	F.A.U. SECTION	COUNTY	TOTAL SHEETS	SHEET NO.	
		DRAWN - JAT	REVISED -			1351	06-00090-00-PV	COOK	137	21
		CHECKED - DJK	REVISED -			CONTRACT NO. 63378				
		DATE - 10-16-09	REVISED -			FED. ROAD DIST. NO. 1 ILLINOIS FED. AID PROJECT ARA-M-8003 (809)				

SCALE: 1" = 20' SHEET NO. 5 OF 10 SHEETS STA. 119+00 TO STA. 124+00