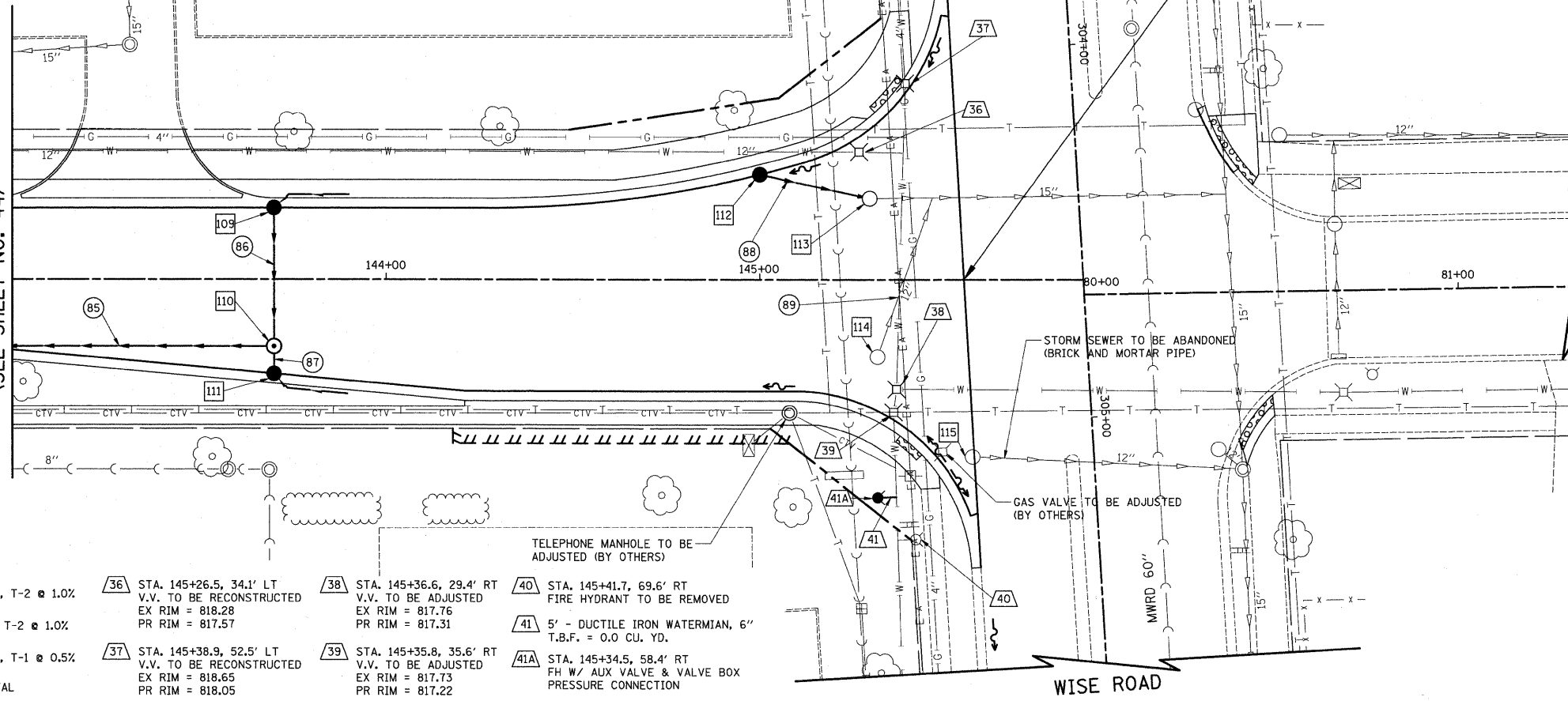


PLAN	REVIEWED	DATE
NOTE BOOK	ALIGNED	
	CHECKED	
	NO. _____	
	FILE NAME	

PROFILE	REVIEWED	DATE
NOTE BOOK	GRADES	
	CHECKED	
	NO. _____	
	STRUCTURE	
	NOTATIONS	
	CHKD	

- 109 STA. 143+70.0, 19.0' LT  
CB T-C  
TYPE 24 F & G  
RIM = 814.20  
INV = 810.20 (12" E)  
INV = 810.70 (4" NW)
- 110 STA. 143+70.0, 18.0' RT  
MH T-A, 4' DIA  
TYPE 1 FR., C.L.  
RIM = 814.22  
INV = 809.85 (12" W)  
INV = 809.21 (12" S)  
INV = 810.02 (12" E)
- 111 STA. 143+70.0, 25.3' RT  
CB T-C  
TYPE 24 F & G  
RIM = 814.07  
INV = 810.07 (12" W)  
INV = 810.57 (4" NE)
- 112 STA. 145+00.0, 28.0' LT  
CB T-C  
TYPE 24 F & G  
RIM = 816.88  
INV = 814.36 (12" N)
- 113 STA. 145+29.4, 21.6' LT  
CB TO BE ADJUSTED  
W/ NEW T-1 FR., C.L.  
EX RIM = 817.74  
PR RIM = 817.65  
INV = 814.21 (EX 12" S)  
INV = 814.14 (12" S)
- 114 STA. 145+31.5, 20.7' RT  
CB TO BE REMOVED
- 115 STA. 145+56.9, 47.6' RT  
CB TO BE FILLED WITH CLSM

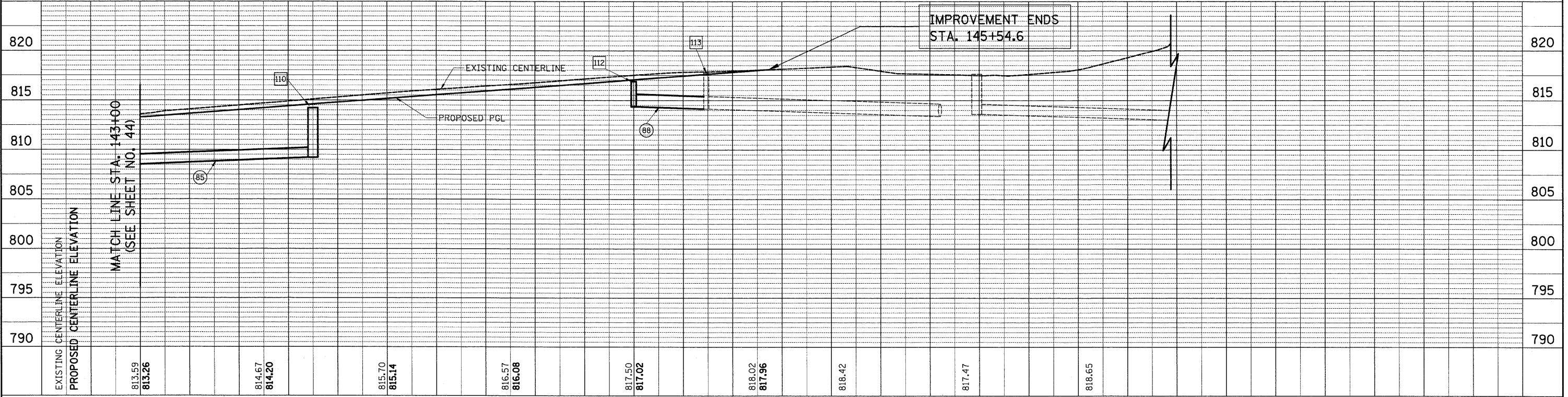
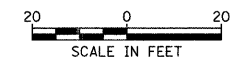
MATCH LINE STA. 143+00  
(SEE SHEET NO. 44)



IMPROVEMENT ENDS  
STA. 145+54.6

- 85 SEE SHEET 44
- 86 35' - 12" S.S., CL. A, T-2 @ 1.0%  
T.B.F. = 6.1 CU. YD.
- 87 5' - 12" S.S., CL. A, T-2 @ 1.0%  
T.B.F. = 0.9 CU. YD.
- 88 28' - 12" S.S., CL. A, T-1 @ 0.5%  
T.B.F. = 3.7 CU. YD.
- 89 43' - 12" S.S. REMOVAL  
T.B.F. = 7.5 CU. YD.
- 36 STA. 145+26.5, 34.1' LT  
V.V. TO BE RECONSTRUCTED  
EX RIM = 818.28  
PR RIM = 817.57
- 37 STA. 145+38.9, 52.5' LT  
V.V. TO BE RECONSTRUCTED  
EX RIM = 818.65  
PR RIM = 818.05
- 38 STA. 145+36.6, 29.4' RT  
V.V. TO BE ADJUSTED  
EX RIM = 817.76  
PR RIM = 817.31
- 39 STA. 145+35.8, 35.6' RT  
V.V. TO BE ADJUSTED  
EX RIM = 817.73  
PR RIM = 817.22
- 40 STA. 145+41.7, 69.6' RT  
FIRE HYDRANT TO BE REMOVED
- 41 5' - DUCTILE IRON WATERMAIN, 6"  
T.B.F. = 0.0 CU. YD.
- 41A STA. 145+34.5, 58.4' RT  
FH W/ AUX VALVE & VALVE BOX  
PRESSURE CONNECTION

LEGEND  
PIPE UNDERDRAIN, 4"  
(25' AT EACH LOCATION)



FILE NAME = ...cad\sheets\2215_0&U 10.dgn	USER NAME = krk	DESIGNED - JAT	REVISED -	<b>STATE OF ILLINOIS DEPARTMENT OF TRANSPORTATION</b>	<b>WRIGHT BOULEVARD DRAINAGE &amp; UTILITIES</b>	F.A.U. RTE. 1351	SECTION 06-00090-00-PV	COUNTY COOK	TOTAL SHEETS 137	SHEET NO. 45
	PLOT SCALE = 20.0000' / IN.	DRAWN - JAT	REVISED -			CONTRACT NO. 63378				
	PLOT DATE = 10/29/2009	CHECKED - DJK	REVISED -			SHEET NO. 10 OF 10 SHEETS				
		DATE - 10-16-09	REVISED -			STA. 143+00 TO STA. 146+00				

FED. ROAD DIST. NO. 1 ILLINOIS FED. AID PROJECT ARA-M-8003 (809)