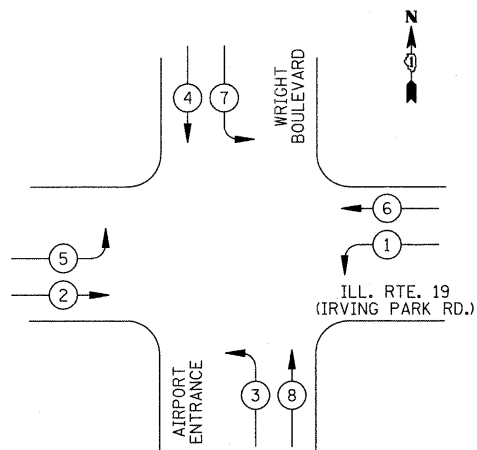


DATE	
BY	
PLAN	
NO.	
DATE	
BY	
PROFILE	
NO.	
DATE	
BY	
PROFILE	
NO.	

EXISTING CONTROLLER SEQUENCE

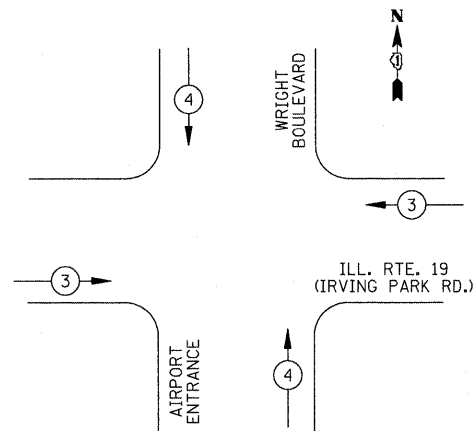


LEGEND

- DUAL ENTRY PHASE
- SINGLE ENTRY PHASE
- OVERLAP
- PEDESTRIAN PHASE
- NUMBER REFERS TO ASSOCIATED PHASE

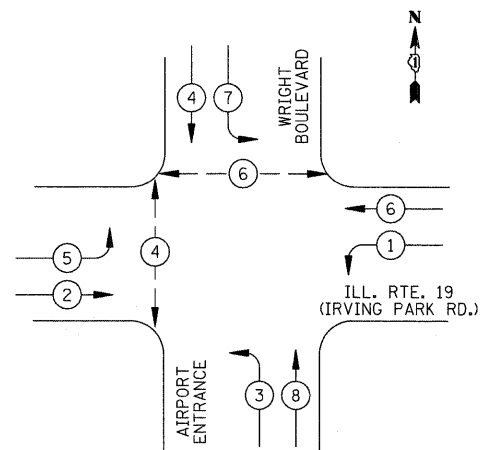
PHASE DESIGNATION DIAGRAM

EXISTING AND PROPOSED EMERGENCY VEHICLE PREEMPTION SEQUENCE



EMERGENCY VEHICLE PREEMPTORS		
EMERGENCY VEHICLE PREEMPTOR	3	4
MOVEMENT		

PROPOSED CONTROLLER SEQUENCE



LEGEND

- DUAL ENTRY PHASE
- SINGLE ENTRY PHASE
- OVERLAP
- PEDESTRIAN PHASE
- NUMBER REFERS TO ASSOCIATED PHASE

PHASE DESIGNATION DIAGRAM

SCHEDULE OF QUANTITIES		
PAY ITEM	UNIT	QUANTITY
CONDUIT IN TRENCH, 2" DIA., GALVANIZED STEEL	FOOT	31
CONDUIT PUSHED, 2" DIA., GALVANIZED STEEL	FOOT	46
CONDUIT PUSHED, 2 1/2" DIA., GALVANIZED STEEL	FOOT	23
CONDUIT PUSHED, 4" DIA., GALVANIZED STEEL	FOOT	58
HANDHOLE	EACH	1
HEAVY-DUTY HANDHOLE	EACH	2
MAINTENANCE OF EXISTING TRAFFIC SIGNAL INSTALLATION	EACH	1
ELECTRIC CABLE IN CONDUIT, SIGNAL NO. 14 2C	FOOT	451
ELECTRIC CABLE IN CONDUIT, SIGNAL NO. 14 3C	FOOT	865
ELECTRIC CABLE IN CONDUIT, SIGNAL NO. 14 5C	FOOT	262
ELECTRIC CABLE IN CONDUIT, SIGNAL NO. 14 7C	FOOT	405
ELECTRIC CABLE IN CONDUIT, LEAD-IN, NO. 14 1 PAIR	FOOT	296
STEEL MAST ARM ASSEMBLY AND POLE, 34 FT.	EACH	1
CONCRETE FOUNDATION, TYPE E 30-INCH DIAMETER	FOOT	15
DRILL EXISTING HANDHOLE	EACH	4
PEDESTRIAN SIGNAL HEAD, L.E.D., 1-FACE, BRACKET MOUNTED, WITH COUNTDOWN TIMER	EACH	2
PEDESTRIAN SIGNAL HEAD, L.E.D., 2-FACE, BRACKET MOUNTED, WITH COUNTDOWN TIMER	EACH	1
DETECTOR LOOP, TYPE I	FOOT	517
PEDESTRIAN PUSH-BUTTON	EACH	3
TEMPORARY TRAFFIC SIGNAL INSTALLATION (SPECIAL)	EACH	1
RELOCATE EXISTING SIGNAL HEAD	EACH	2
RELOCATE EXISTING EMERGENCY VEHICLE PRIORITY SYSTEM, DETECTOR UNIT	EACH	1
MODIFY EXISTING CONTROLLER	EACH	1
REMOVE ELECTRIC CABLE FROM CONDUIT	FOOT	1376
REMOVE EXISTING TRAFFIC SIGNAL EQUIPMENT	EACH	1
REMOVE EXISTING HANDHOLE	EACH	1
REMOVE EXISTING CONCRETE FOUNDATION	EACH	1
PREFORMED DETECTOR LOOP	FOOT	29
TEMPORARY TRAFFIC SIGNAL TIMING	EACH	1
GROUNDING EXISTING HANDHOLE FRAME AND COVER	EACH	2
ELECTRIC CABLE IN CONDUIT, GROUNDING, NO. 6 1C	FOOT	133
ELECTRIC CABLE IN CONDUIT, NO. 20 3C, TWISTED, SHIELDED	FOOT	282

NOTE:
THE TRAFFIC SIGNAL CONTROLLER EQUIPMENT FOR THIS PROJECT SHALL BE "ECONOLITE" TO MATCH THE EXISTING ADJACENT SYSTEM.

FILE NAME =	USER NAME = jst	DESIGNED - BRD	REVISED -
J:\2215\ced\sheets\Signal\73_ILRT19\right\Sequences&S00.dgn		DRAWN - OJT	REVISED -
	PLOT SCALE = 50,0000' / IN.	CHECKED - JJE	REVISED -
	PLOT DATE = 10/15/2009	DATE - 10-16-09	REVISED -

STATE OF ILLINOIS
DEPARTMENT OF TRANSPORTATION

SEQUENCES AND SCHEDULE OF QUANTITIES
IL ROUTE 19 (IRVING PARK ROAD) AT WRIGHT BOULEVARD

SCALE: N.T.S. SHEET NO. 5 OF 25 SHEETS

F.A.U. RTE.	SECTION	COUNTY	TOTAL SHEETS	SHEET NO.
1351	06-00090-00-PV	COOK	137	73
CONTRACT NO. 63378				
FED. ROAD DIST. NO. 1 ILLINOIS FED. AID PROJECT ARA-M-8003 (809)				