

F.A.U. RTE.	SECTION	COUNTY	TOTAL SHEETS	SHEET NO.
2953	09-00006-00-RS	LAKE	10	1
CONTRACT NO. 63393				
ILLINOIS FED. AID PROJECT				

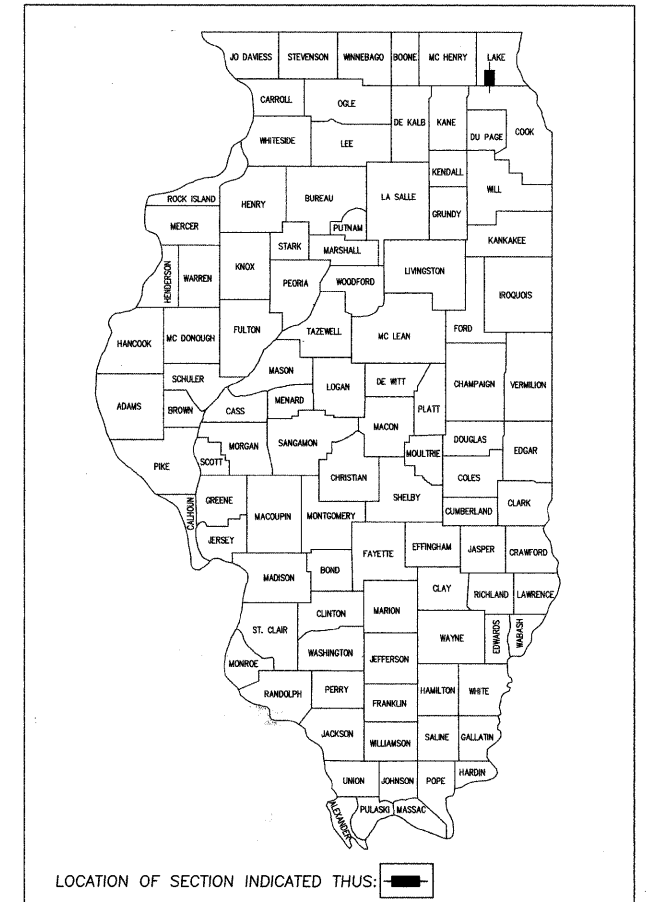
**STATE OF ILLINOIS
DEPARTMENT OF TRANSPORTATION
DIVISION OF HIGHWAYS**

**PLANS FOR PROPOSED
FEDERAL AID HIGHWAY**

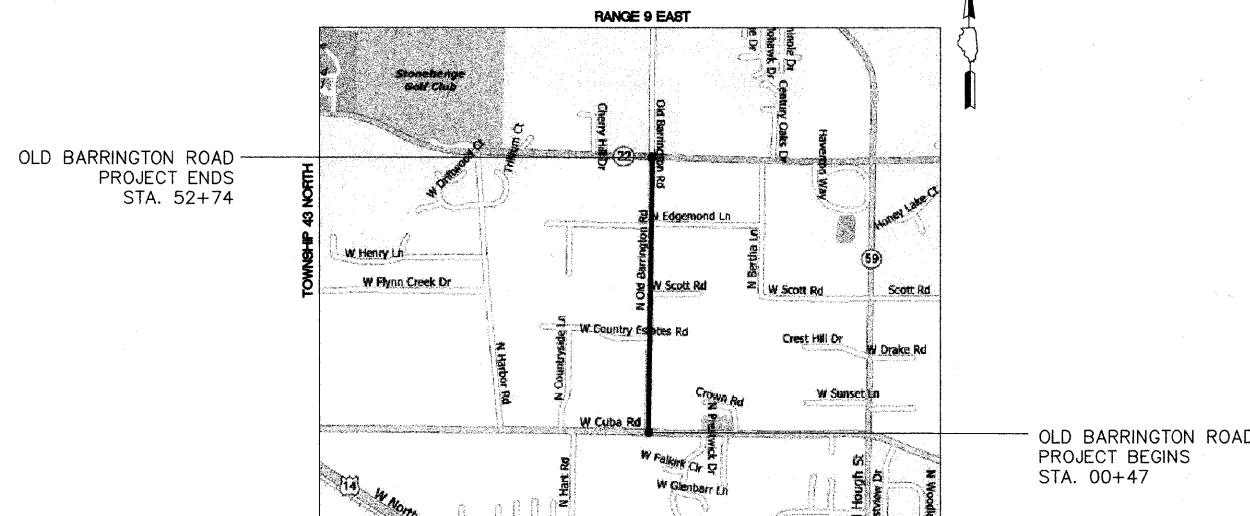
**FAU 2953/ OLD BARRINGTON ROAD
CUBA ROAD TO IL ROUTE 22
SECTION: 09-00006-00-RS
JOB NO. C-91-904-09
PROJECT NO. ARA-9003(443)
VILLAGE OF NORTH BARRINGTON, ILLINOIS
LAKE COUNTY**

INDEX OF SHEETS

1. COVER SHEET, INDEX OF SHEETS, LIST OF STATE STANDARDS
2. GENERAL NOTES & SUMMARY OF QUANTITIES
3. TYPICAL SECTIONS
- 4.-5. PROPOSED CONDITIONS - PLAN VIEW
- 6.-10. CONSTRUCTION DETAILS



LOCATION MAP
(NOT TO SCALE)



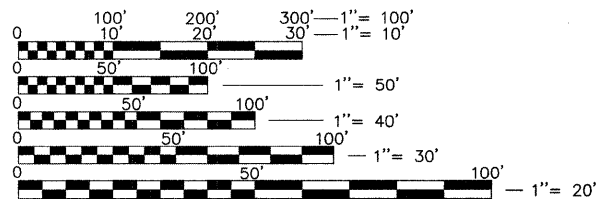
OLD BARRINGTON ROAD
PROJECT ENDS
STA. 52+74

OLD BARRINGTON ROAD
PROJECT BEGINS
STA. 00+47

PROJECT INFORMATION

LENGTH OF PROJECT = 5227 FT (0.99 MI)
ADT = 2250 VPD (2007)
POSTED SPEED LIMIT = 25 MPH
DESIGN SPEED LIMIT = 30 MPH
ROAD CLASSIFICATION = URBAN COLLECTOR

FULL SIZE PLANS HAVE BEEN PREPARED USING STANDARD ENGINEERING SCALES. REDUCED SIZED PLANS WILL NOT CONFORM TO STANDARD SCALES. IN MAKING MEASUREMENTS ON REDUCED PLANS, THE BELOW SCALES MAY BE USED.



J.U.L.I.E.

JOINT
UTILITY
LOCATION
INFORMATION FOR
EXCAVATION
CALL 811



Know what's below.
Call before you dig.

EXISTING UTILITIES: WHEN THE PLANS OR SPECIAL PROVISIONS INCLUDE INFORMATION PERTAINING TO THE LOCATION OF UNDERGROUND UTILITY FACILITIES, SUCH INFORMATION REPRESENTS ONLY THE OPINION OF THE ENGINEER AS TO THE LOCATION OF SUCH UTILITIES AND IS ONLY INCLUDED FOR THE CONVENIENCE OF THE BIDDER. THE ENGINEER AND OWNER ASSUME NO RESPONSIBILITY WHATSOEVER IN RESPECT TO THE SUFFICIENCY OR ACCURACY OF THE INFORMATION SHOWN ON THE PLANS RELATIVE TO THE LOCATION OF UNDERGROUND UTILITY FACILITIES OR THE MANNER IN WHICH THEY ARE TO BE REMOVED OR ADJUSTED. IT SHALL BE THE CONTRACTOR'S RESPONSIBILITY TO DETERMINE THE ACTUAL LOCATION OF ALL SUCH UTILITIES. HE SHALL ALSO OBTAIN FROM THE RESPECTIVE UTILITY COMPANIES, DETAILED INFORMATION RELATIVE TO THE LOCATION OF THEIR FACILITIES AND THE WORKING SCHEDULES OF THE UTILITY COMPANIES FOR REMOVING OR ADJUSTING THEM.

CONTRACTOR IS RESPONSIBLE FOR CONTACTING J.U.L.I.E. AT 1-800-892-0123 AND MUST ACQUIRE A DIG NUMBER A MINIMUM OF 72 HOURS PRIOR TO ANY WORK BEING DONE.

NOTE:
THE CONTRACTOR IS SOLELY RESPONSIBLE
FOR JOBSITE SAFETY.

CONTRACT NO. 63393

FILE NAME =
3376 OLD BARRINGTON.DWG

STATE OF ILLINOIS
DEPARTMENT OF TRANSPORTATION
DIVISION OF HIGHWAYS

APPROVED: October 14, 2009 2009
Kathy Nelson
Village Administrator
VILLAGE OF NORTH BARRINGTON

PASSED: OCTOBER 26 2009
Cheryl Chasnoth
DISTRICT ONE ENGINEER OF LOCAL ROADS AND STREETS

RELEASING FOR BID
BASED ON LIMITED REVIEW: OCTOBER 26, 2009
Diana M. O'Keefe
DEPUTY DIRECTOR OF HIGHWAYS, REGION ONE ENGINEER

PROFESSIONAL ENGINEER'S SIGNATURE & SEAL

Leo X. Morand

LEO X. MORAND
093-052625
LICENSED
PROFESSIONAL
ENGINEER
STATE OF ILLINOIS

EXPIRES: 11-30-09 SEAL

**GHA GEWALT HAMILTON
ASSOCIATES, INC.**

850 Forest Edge Drive ■ Vernon Hills, IL 60061
Phone: 847-478-9700 Fax: 847-478-9701

**PRINTED BY THE AUTHORITY
OF THE STATE OF ILLINOIS**

ASSOCIATE FIELD ENGINEER: KEVIN STALLWORTH (847) 705-4169

GENERAL NOTES

A-1 THE ILLINOIS DEPARTMENT OF TRANSPORTATION "STANDARD SPECIFICATIONS FOR ROAD AND BRIDGE CONSTRUCTION", LATEST EDITION, THE "STANDARD SPECIFICATIONS FOR WATER AND SEWER MAIN CONSTRUCTION IN ILLINOIS" LATEST EDITION, PROJECT SPECIFICATIONS, ALL APPLICABLE REQUIREMENTS OF THE ILLINOIS ENVIRONMENTAL PROTECTION AGENCY, MUNICIPALITY, ORDINANCES OF AUTHORITIES HAVING JURISDICTION AND ALL ADDENDA THERE SHALL GOVERN THIS WORK.

A-2 ALL REFERENCES TO "ENGINEER" SHALL BE INTERPRETED TO MEAN THE RESIDENT ENGINEER.

A-3 NO CONSTRUCTION PLANS SHALL BE USED FOR CONSTRUCTION UNLESS SPECIFICALLY MARKED 'FOR CONSTRUCTION'. PRIOR TO COMMENCEMENT OF CONSTRUCTION, THE CONTRACTOR SHALL VERIFY ALL DIMENSIONS, AND CONDITIONS AFFECTING THEIR WORK WITH THE ACTUAL CONDITIONS AT THE JOB SITE. IN ADDITION, THE CONTRACTOR MUST VERIFY THE ENGINEERS' LINE AND GRADES. IF THERE ARE ANY DISCREPANCIES FROM WHAT IS SHOWN ON THE CONSTRUCTION PLANS, STANDARD SPECIFICATIONS AND/OR SPECIAL DETAILS, THE CONTRACTOR SHALL SECURE WRITTEN INSTRUCTION FROM THE ENGINEER PRIOR TO PROCEEDING WITH ANY PART OF THE WORK AFFECTED BY OMISSION OR DISCREPANCIES. FAILING TO SECURE SUCH INSTRUCTION, THE CONTRACTOR WILL BE CONSIDERED TO HAVE PROCEEDED AT HIS OWN RISK AND EXPENSE. IN THE EVENT OF ANY DOUBT OR QUESTION ARISING WITH RESPECT TO THE TRUE MEANING OF THE CONSTRUCTION PLANS OR SPECIFICATIONS, THE DECISION OF THE ENGINEER SHALL BE FINAL AND CONCLUSIVE.

A-4 IT IS THE CONTRACTOR'S RESPONSIBILITY TO ASCERTAIN EXISTING FIELD CONDITIONS PRIOR TO BIDDING ON THE PROJECT.

A-5 EASEMENTS FOR THE EXISTING UTILITIES, BOTH PUBLIC AND PRIVATE, AND UTILITIES WITHIN PUBLIC RIGHTS-OF-WAY ARE SHOWN ON THE PLANS ACCORDING TO AVAILABLE RECORDS. THE CONTRACTOR SHALL BE RESPONSIBLE FOR DETERMINING THE EXACT LOCATION IN THE FIELD OF THESE UTILITY LINES AND THEIR PROTECTION FROM DAMAGE DUE TO CONSTRUCTION OPERATIONS. IF EXISTING UTILITY LINES OF ANY NATURE ARE ENCOUNTERED WHICH CONFLICT IN LOCATION WITH NEW CONSTRUCTION, THE CONTRACTOR SHALL NOTIFY THE ENGINEER SO THAT THE CONFLICT MAY BE RESOLVED.

A-6 SAW CUTTING OF PAVEMENTS, SIDEWALK, ETC. SHALL BE TO FULL DEPTH AND SHALL RESULT IN A CLEAN STRAIGHT EDGE ON THE PORTION REMAINING. ALL SAW CUTTING SHALL BE CONSIDERED INCLUDED IN THE COST OF THE ITEM REMOVED.

A-7 THE CONTRACTOR SHALL PROTECT AND CAREFULLY PRESERVE ALL SECTION OR SUBSECTION MONUMENTS, PROPERTY CORNERS, AND REFERENCE MARKERS UNTIL THE OWNER, HIS AGENT, OR AN AUTHORIZED SURVEYOR HAS WITNESSED OR OTHERWISE REFERENCED THEIR LOCATIONS.

A-8 OFFSET LOCATIONS GIVEN IN THE PLANS FOR STRUCTURES, EDGE OF PAVEMENT, ETC. ARE FROM THE ROADWAY CENTERLINE.

A-9 HOT-MIX ASPHALT SURFACE REMOVAL BUTT JOINTS WILL BE INSTALLED AT THE ENDS OF ALL RESURFACING (WHERE RESURFACING MEETS EXISTING PAVEMENT). IN ACCORDANCE WITH THE BUTT JOINT AND HOT-MIX ASPHALT TAPER DETAILS SHEET INCLUDED IN THE PLANS, UNLESS OTHERWISE SPECIFIED.

A-10 QUANTITIES FOR PATCHING SHALL NOT EXCEED THOSE PROVIDED IN THE SUMMARY OF QUANTITIES UNLESS APPROVED BY THE ENGINEER. THE ENGINEER WILL IDENTIFY FINAL PATCH LOCATIONS IN THE FIELD.

A-11 WHENEVER, DURING CONSTRUCTION OPERATIONS, ANY LOOSE MATERIAL IS DEPOSITED IN THE FLOW LINE OF GUTTERS, DRAINAGE STRUCTURES, DITCHES, ETC. SUCH THAT THE NATURAL FLOW LINE OF WATER IS OBSTRUCTED, THE LOOSE MATERIAL WILL BE REMOVED AT THE CLOSE OF EACH WORKING DAY. AT THE CONCLUSION OF CONSTRUCTION OPERATION, ALL DRAINAGE STRUCTURES AND FLOW LINES SHALL BE FREE FROM DIRT AND DEBRIS. THIS WORK SHALL BE CONSIDERED INCIDENTAL TO THE CONTRACT. THE CONTRACTOR'S FAILURE TO PROVIDE THE ABOVE WILL PRECLUDE ANY POSSIBLE ADDED COMPENSATION REQUESTED DUE TO DELAYS OR UNSUITABLE MATERIALS CREATED AS A RESULT THEREOF.

STORM SEWERS, WATER MAINS, AND UTILITIES

B-1 EXISTING UTILITIES: WHEN THE PLANS OR SPECIAL PROVISIONS INCLUDE INFORMATION PERTAINING TO THE LOCATION OF UNDERGROUND UTILITY FACILITIES, SUCH INFORMATION REPRESENTS ONLY THE OPINION OF THE ENGINEER AS TO THE LOCATION OF SUCH UTILITIES AND IS ONLY INCLUDED FOR THE CONVENIENCE OF THE CONTRACTOR. THE ENGINEER AND OWNER ASSUME NO RESPONSIBILITY WHATSOEVER IN RESPECT TO THE SUFFICIENCY OR ACCURACY OF THE INFORMATION SHOWN ON THE PLANS RELATIVE TO THE LOCATION OF UNDERGROUND UTILITY FACILITIES OR THE MANNER IN WHICH THEY ARE TO BE REMOVED OR ADJUSTED. IT SHALL BE THE CONTRACTOR'S RESPONSIBILITY TO DETERMINE THE ACTUAL LOCATION OF ALL SUCH FACILITIES. THIS WORK SHALL BE CONSIDERED AS INCLUDED IN THE UNIT BID PROCESS OF THE CONTRACT, AND NO ADDITIONAL COMPENSATION WILL BE ALLOWED. HE SHALL ALSO OBTAIN FROM THE RESPECTIVE UTILITY COMPANIES DETAILED INFORMATION RELATIVE TO THE LOCATION OF THEIR FACILITIES AND THE WORKING SCHEDULES OF THE UTILITY COMPANIES FOR REMOVING OR ADJUSTING THEM.

B-2 THE CONTRACTOR IS RESPONSIBLE FOR CONTACTING JULIE AS WELL AS LOCAL CABLE TV COMPANIES AND THE VILLAGE. THE FACILITIES SHALL BE LOCATED PRIOR TO ANY WORK WITHIN ANY EASEMENT, R.C.W, OR SUSPECTED UTILITY LOCATION.

B-3 THE CONTRACTOR SHALL BE RESPONSIBLE FOR THE PROTECTION OF ALL UNDERGROUND AND SURFACE UTILITIES EVEN THROUGH THEY MIGHT NOT BE SHOWN ON THE PLANS. ANY UTILITY PROPERTY DAMAGED DURING CONSTRUCTION SHALL BE REPAIRED OR REPLACED TO THE SATISFACTION OF THE OWNER AT THE CONTRACTOR'S EXPENSE.

B-4 ALL UTILITY COMPANIES SHALL BE NOTIFIED AT LEAST 3 DAYS PRIOR TO THE START OF CONSTRUCTION.

B-5 THE CONTRACTOR SHALL ENSURE THAT ALL WATER SYSTEM VALVE VAULTS, AND SANITARY SEWER MANHOLES REMAIN READILY ACCESSIBLE TO THE VILLAGE FOR EMERGENCY OPERATIONS. THE LOCATIONS OF ALL WATER AND SANITARY FACILITIES SHALL BE MARKED AND READILY VISABLE AT ALL TIMES.

SIGNING AND STRIPING

C-1 SEE IDOT STANDARD DETAIL 780001, DISTRICT ONE DETAIL TC-13, AND REFERENCE PLAN SHEETS.

TRAFFIC CONTROL

D-1 SEE TRAFFIC CONTROL HIGHWAY STANDARDS CONCERNING TRAFFIC CONTROL AND PROTECTION.

DEBRIS REMOVAL

MATERIALS RESULTING FROM THE REMOVAL OF ASPHALT SURFACES, UTILITY ADJUSTMENTS, RESTORATION WORK, ETC. SHALL BE REMOVED AT THE END OF EACH DAY TO AN APPROVED SITE. IN THE JUDGEMENT OF THE CITY, SHOULD IT BE NECESSARY TO REMOVE SUCH MATERIALS, THE CITY WILL HAVE THE MATERIAL REMOVED AND THE CONTRACTOR SHALL BE BILLED (CHARGED) ACCORDINGLY.

WATER SUPPLY

THE INDISCRIMINATE USE OF FIRE HYDRANTS, EXISTING STREAMS, CREEKS, WETLANDS OR PONDS IS STRICTLY PROHIBITED. THE CONTRACTOR SHALL PROVIDE A WATER TRUCK AND DRIVER AS REQUIRED TO OBTAIN AND TRANSPORT THIS WATER. THE CONTRACTOR SHALL BE RESPONSIBLE FOR OBTAINING WATER FROM AN APPROVED SOURCE OTHER THAN HIS YARD, WRITTEN APPROVAL FROM THE AGENCY HAVING JURISDICTION FOR THE SOURCE. IF THE WATER IS FROM A SOURCE OTHER THAN HIS YARD, WRITTEN APPROVAL FROM THE AGENCY HAVING JURISDICTION FOR THE SOURCE OF THE WATER MUST BE RECEIVED BY THE CONTRACTOR PRIOR TO USE OF THE WATER.

DRIVEWAY CLOSING

IT WILL BE THE CONTRACTOR'S RESPONSIBILITY TO NOTIFY RESIDENTS AND THE VILLAGE WHEN ACCESS TO THEIR DRIVEWAYS WILL BE TEMPORARILY CLOSED DUE TO SIDEWALK REPLACEMENT, AND/OR DRIVEWAY REPLACEMENT. AT LOCATIONS WHERE THE DRIVEWAY IS SCHEDULED TO BE REMOVED, THE CONTRACTOR SHALL CONTACT THE BUSINESS/HOMEOWNER 24 HOURS PRIOR TO REMOVING THE CURB, SIDEWALK, OR DRIVE APPROACH. EVERY EFFORT SHALL BE MADE TO ACCOMMODATE ACCESS TO THESE PROPERTIES. THE CONTRACTOR SHALL NOT BE ALLOWED TO CLOSE A DRIVEWAY FOR MORE THAN 8 HOURS UNDER ANY CIRCUMSTANCE. THE CONTRACTOR SHALL BE RESPONSIBLE FOR MAINTAINING THE BARRICADES TO PREVENT TRAFFIC FROM USING THE DRIVEWAYS DURING THIS PERIOD.

STREET SWEEPING AND PREPARATION

THE CONTRACTOR SHALL BE RESPONSIBLE FOR SWEEPING AND CLEANING STREETS OF ANY DEBRIS AND MATERIAL THAT HAS ACCUMULATED AS A RESULT OF THE CONSTRUCTION ACTIVITY. A MECHANICAL SWEEPER, MECHANICALLY DRIVEN AIR AND HANDWORK WITH SHOVEL AND BROOM SHALL BE UTILIZED TO PROVIDE A CLEAN STREET FOR THE MOTORING PUBLIC. WITHIN 24 HOURS OF PLACING PRIME COAT AND THE LAYING OF HMA, THE CONTRACTOR SHALL SWEEP THE PAVEMENT AND REMOVE STANDING WATER, EARTH, WEEDS, LEAVES, DIRT, CONSTRUCTION DEBRIS AND ALL LOOSE MATERIAL.

HIGHWAY STANDARDS:

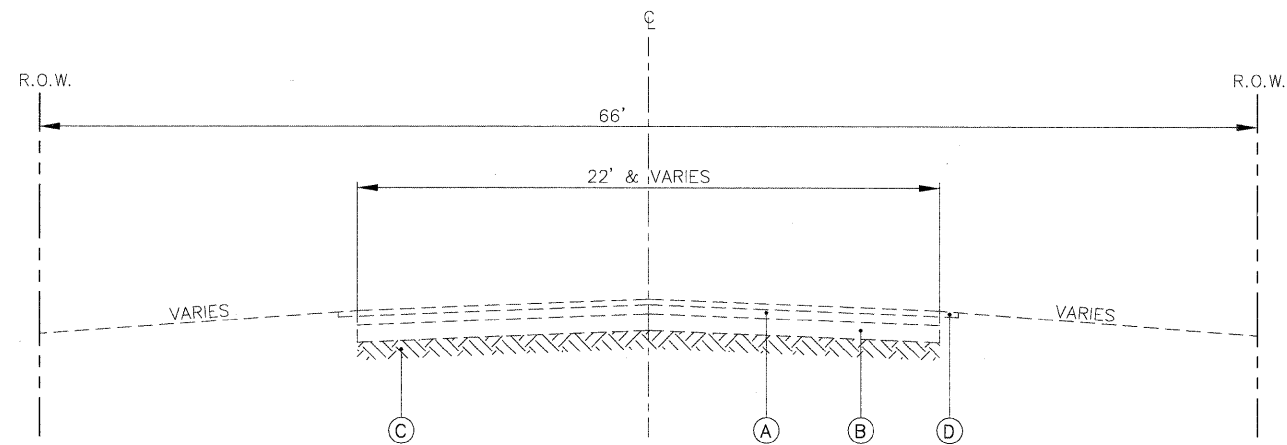
- 000001-05 STANDARD SYMBOLS, ABBREVIATIONS, AND PATTERNS
- 442201-03 CLASS C AND D PATCHES
- 701301-03 LANE CLOSURE, 2L, 2W, SHORT TIME OPERATIONS
- 701311-03 LANE CLOSURE, 2L, 2W, MOVING OPERATIONS-DAY ONLY
- 701501-05 URBAN LANE CLOSURE, 2L, 2W, UNDIVIDED
- 701901-01 TRAFFIC CONTROL DEVICES
- 780001-02 TYPICAL PAVEMENT MARKINGS

SUMMARY OF QUANTITIES

				ROADWAY
				100% FEDERAL
ITEM	PAYCODE	DESCRIPTION	UNIT	1000
1.	20101700	SUPPLEMENTAL WATERING	UNIT	125
2.	20201200	REMOVAL AND DISPOSAL OF UNSUITABLE MATERIAL	CU YD	13
3.	21101600	TOPSOIL FURNISH AND PLACE, VARIABLE DEPTH	SQ YD	1180
4.	25000110	SEEDING, CLASS 1A	ACRE	0.25
5.	25000400	NITROGEN FERTILIZER NUTRIENT	POUND	25
6.	25000500	PHOSPHORUS FERTILIZER NUTRIENT	POUND	25
7.	25000600	POTASSIUM FERTILIZER NUTRIENT	POUND	25
8.	25100630	EROSION CONTROL BLANKET	SQ YD	1200
9.	31101000	SUB-BASE GRANULAR MATERIAL, TYPE B	TON	54
10.	40200800	AGGREGATE SURFACE COURSE, TYPE B	TON	15
11.	40300100	BITUMINOUS MATERIALS (PRIME COAT)	GALLON	1377
12.	40600400	AGGREGATE (PRIME COAT)	TON	55
13.	40600625	LEVELING BINDER (MACHINE METHOD), N50	TON	1032
14.	40600982	HOT-MIX ASPHALT SURFACE REMOVAL - BUTT JOINT	SQ YD	517
15.	40603310	HOT-MIX ASPHALT SURFACE COURSE, MIX "C", N50	TON	1652
16.	42300200	PORTLAND CEMENT CONCRETE DRIVEWAY PAVEMENT, 6 INCH	SQ YD	80
17.	44000200	DRIVEWAY PAVEMENT REMOVAL	SQ YD	603
18.	44201713	CLASS D PATCHES, TYPE I, 6 INCH	SQ YD	2
19.	44201717	CLASS D PATCHES, TYPE II, 6 INCH	SQ YD	20
20.	44201721	CLASS D PATCHES, TYPE III, 6 INCH	SQ YD	45
21.	44201723	CLASS D PATCHES, TYPE IV, 6 INCH	SQ YD	325
22.	44300100	AREA REFLECTIVE CRACK CONTROL TREATMENT	SQ YD	13162
23.	48102100	AGGREGATE WEDGE SHOULDER, TYPE B	TON	690
24.	67100100	MOBILIZATION	L SUM	1
25.	70102620	TRAFFIC CONTROL AND PROTECTION, STANDARD 701501	L SUM	1
26.	70300100	SHORT-TERM PAVEMENT MARKING	FOOT	1090
27.	70301000	WORK ZONE PAVEMENT MARKING REMOVAL	SQ FT	182
* 28.	78000200	THERMOPLASTIC PAVEMENT MARKING - LINE 4"	FOOT	20912
* 29.	78000650	THERMOPLASTIC PAVEMENT MARKING - LINE 24"	FOOT	24
30.	X0322256	TEMPORARY INFORMATION SIGNAGE	SQ FT	52

* DENOTES SPECIALITY ITEM

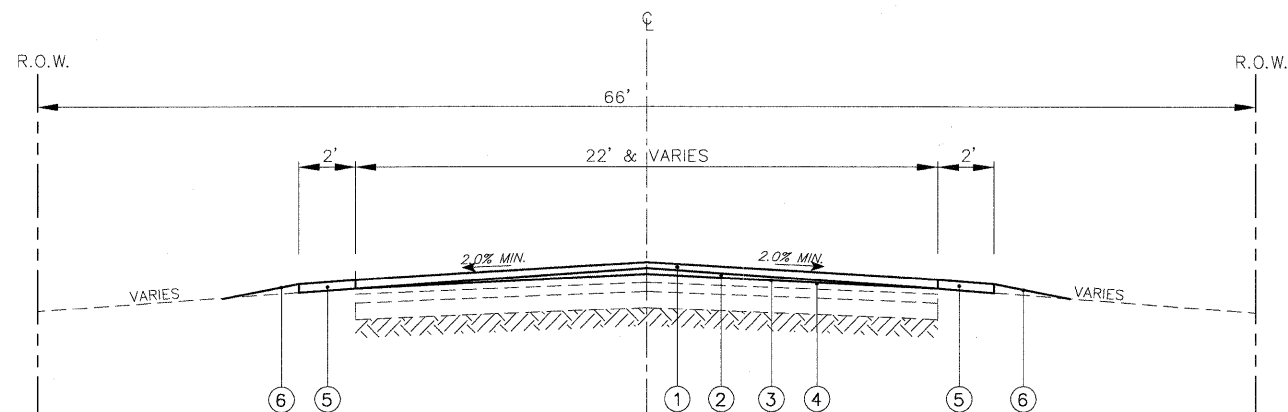
FILE NAME = 3376 OLD BARRINGTON.DWG	USER NAME =	DESIGNED -- BVS DRAWN -- BVS	REVISED -- 10/16/09 REVISED -- 10/22/09	OLD BARRINGTON ROAD RESURFACING PROGRAM	GENERAL NOTES AND SUMMARY OF QUANTITIES	F.A.U. RTE. 2953	SECTION 09-00006-00-RS	COUNTY LAKE	TOTAL SHEETS 10	SHEET NO. 2
	PLOT SCALE = N.T.S. PLOT DATE = 8/3/09	CHECKED -- PJG DATE -- 8/3/09	SCALE: NONE			SHEET NO. 2 OF 10 SHEETS	STA. TO STA.	CONTRACT NO. 63393		ILLINOIS FED. AID PROJECT



EXISTING TYPICAL CROSS SECTION
 OLD BARRINGTON ROAD (FAU ROUTE 2953)
 STA. 0+47 (CUBA ROAD) TO STA. 52+74 (IL ROUTE 22)

EXISTING LEGEND

- (A) EXISTING HMA PAVEMENT, 5" & VARIES
- (B) EXISTING AGGREGATE SUBBASE, 8" TO 12" & VARIES
- (C) EXISTING SUBGRADE
- (D) EXISTING AGGREGATE SHOULDER



PROPOSED TYPICAL CROSS SECTION
 OLD BARRINGTON ROAD (FAU ROUTE 2953)
 STA. 0+47 (CUBA ROAD) TO STA. 52+74 (IL ROUTE 22)

PROPOSED LEGEND

- (1) HOT-MIX ASPHALT SURFACE COURSE, MIX 'C', N50, 2"
- (2) LEVELING BINDER (MACHINE METHOD), N50, 1 1/4"
- (3) BITUMINOUS MATERIALS (PRIME COAT) AND AGGREGATE (PRIME COAT)
- (4) AREA REFLECTIVE CRACK CONTROL TREATMENT
- (5) 2" AGGREGATE SHOULDER, TO BE REPAIRED AS NEEDED
- (6) RESTORATION

NOTES:

- DRIVEWAY PAVEMENT SHALL BE REMOVED AND REPLACED AS MARKED BY THE ENGINEER.
- LIMITS OF REMOVAL SHALL NOT EXTEND PAST THE PUBLIC RIGHT-OF-WAY.
- THE INTENTION OF DRIVEWAY REMOVAL AND REPLACEMENT IS TO TRANSITION FROM PROPOSED ROAD PAVEMENT ELEVATION TO EXISTING DRIVEWAY PAVEMENT ELEVATION.
- HMA SURFACE REMOVAL, BUTT JOINTS AND ROADWAY BUTT JOINTS SHALL CONSIST OF COLD MILLING BUTT JOINTS AS MARKED BY THE ENGINEER.
- CLASS D PAVEMENT PATCHES, 6". INCLUDE REMOVAL OF SURFACE COURSE, BINDER COURSE AND/OR SUBBASE TO A TOTAL DEPTH OF 6" AS MARKED BY THE ENGINEER. REPLACEMENT MATERIAL SHALL BE HOT-MIX ASPHALT BINDER AND SHALL BE PREPARED TO ACCEPT THE LEVELING BINDER COURSE.
- HOT-MIX ASPHALT LEVELING BINDER COURSE, N50, SHALL BE PLACED AT A THICKNESS OF 1.25" AS DIRECTED BY THE ENGINEER.
- AREA REFLECTIVE CRACK CONTROL, SYSTEM A, SHALL BE PLACED PRIOR TO THE PLACEMENT OF THE FINAL SURFACE COURSE.
- HOT-MIX ASPHALT SURFACE COURSE, MIX C, N50, SHALL BE PLACED AT A THICKNESS OF 2" AS DIRECTED BY ENGINEER.

HOT-MIX ASPHALT MIXTURE REQUIREMENTS	
MIXTURE TYPE	AIR VOIDS @ N _{DES}
PAVEMENT RESURFACING	
HOT-MIX ASPHALT SURFACE COURSE, MIX "C", N50 (IL 9.5 mm)	4% @ 50 Gyr.
LEVELING BINDER (MACHINE METHOD), IL 9.5 mm, N50	4% @ 50 Gyr.
DRIVEWAYS	
HOT-MIX ASPHALT SURFACE COURSE, MIX "C", N50 (IL 9.5 mm); 3"	4% @ 50 Gyr.
PATCHING	
CLASS D PATCHES (HMA BINDER IL-19 mm)	4% @ 70 Gyr.
<small>Note: The unit weight used to calculate all HMA Mixture Quantities is 112Lbs/SqYd/in Note: The "AC TYPE" for polymerized HMA Mixes shall be "SBS/SBR PG 70-22" and for non-polymerized HMA the "AC TYPE" shall be "PG 64-22" unless modified by District One Special Provisions. For "PERCENT OF RAP" see District One Special Provisions.</small>	

FILE NAME =
3376 OLD BARRINGTON.DWG

USER NAME =
PLOT SCALE = N.T.S.
PLOT DATE = 8/3/09

DESIGNED - BVS
DRAWN - BVS
CHECKED - DJG
DATE - 8/3/09

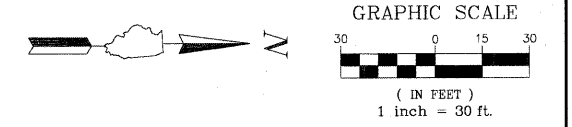
REVISED - 10/16/09
REVISED - 10/22/09

**OLD BARRINGTON ROAD
RESURFACING PROGRAM**

TYPICAL SECTIONS

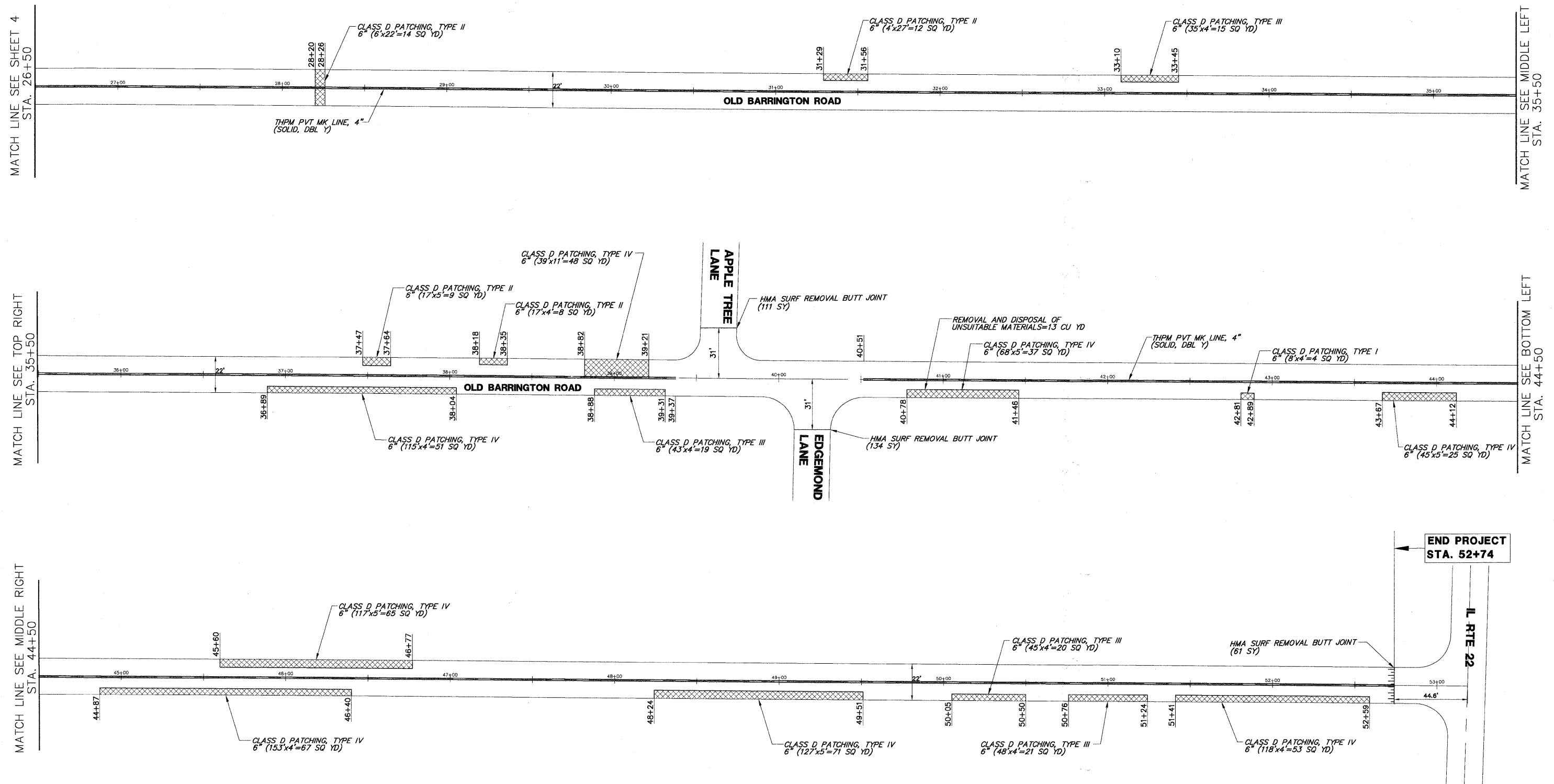
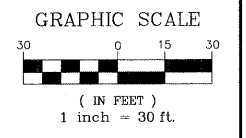
SCALE: NONE SHEET NO. 3 OF 10 SHEETS STA. TO STA.

F.A.U. RTE. 2953	SECTION 09-0006I-00-RS	COUNTY LAKE	TOTAL SHEETS 10	SHEET NO. 3
CONTRACT NO. 63393				ILLINOIS FED. AID PROJECT



*NOTE: FINAL PATCHING LOCATIONS AND DIMENSIONS TO BE DETERMINED BY THE ENGINEER IN THE FIELD.

FILE NAME = 3376 OLD BARRINGTON.DWG	USER NAME =	DESIGNED - BVS	REVISED - 10/16/09	OLD BARRINGTON ROAD RESURFACING PROGRAM	PROPOSED PLAN	F.A.U. RTE.	SECTION	COUNTY	TOTAL SHEETS	SHEET NO.
	PLOT SCALE = N.T.S.	CHECKED - DJG				2953	09-00006-00-RS	LAKE	10	4
PLOT DATE = 8/3/09	DATE - 8/3/09			SCALE: 1"=30' SHEET NO. 4 OF 10 SHEETS STA. 0+47 TO STA. 26+50		CONTRACT NO. 63393				
						ILLINOIS FED. AID PROJECT				



**END PROJECT
STA. 52+74**

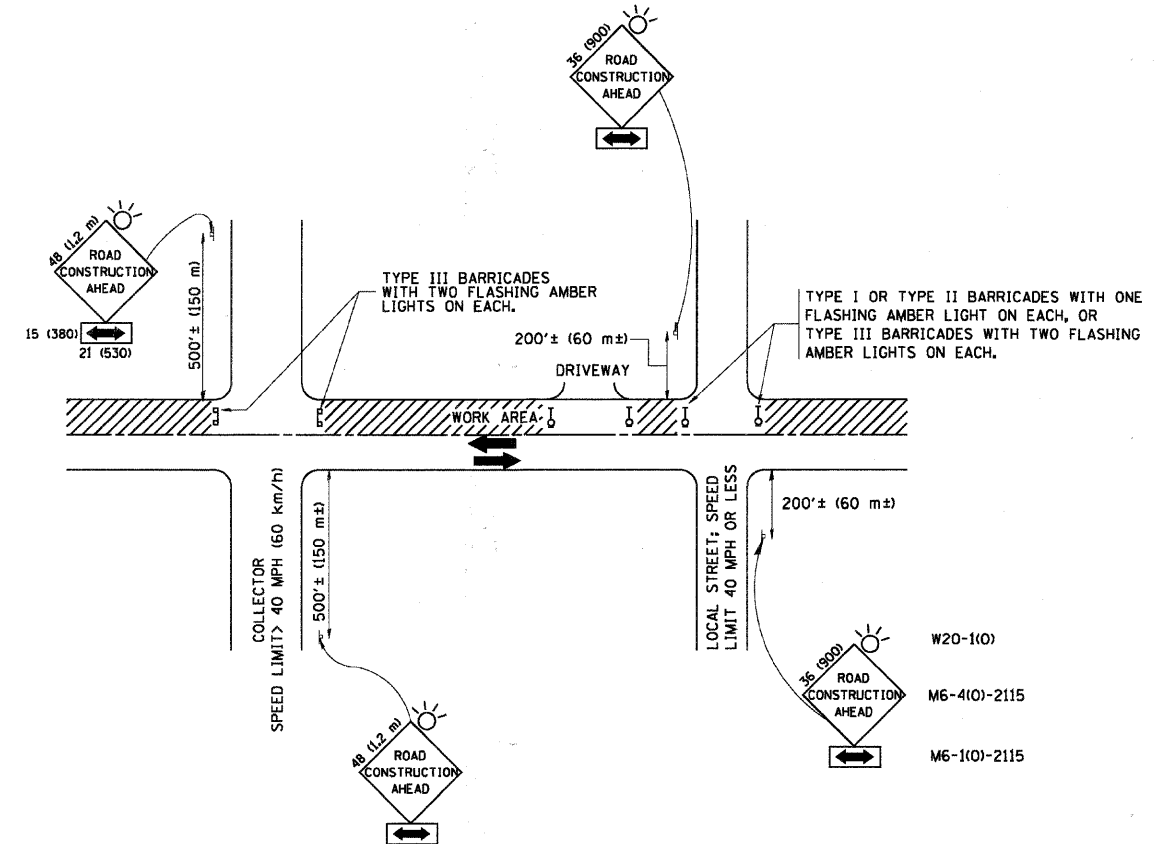
IL RTE 22

**NOTE: FINAL PATCHING LOCATIONS AND DIMENSIONS TO BE DETERMINED BY THE ENGINEER IN THE FIELD.*

FILE NAME = 3376 OLD BARRINGTON.DWG	USER NAME =	DESIGNED - BVS	REVISED - 10/16/09	OLD BARRINGTON ROAD RESURFACING PROGRAM	PROPOSED PLAN		F.A.U. RTE.	SECTION	COUNTY	TOTAL SHEETS	SHEET NO.
	PLOT SCALE = N.T.S.	DRAWN - BVS	CHECKED - DJG				2953	09-00006-00-RS	LAKE	10	5
	PLOT DATE = 8/3/09	DATE - 8/3/09					CONTRACT NO. 63393				

SCALE: 1"=30' SHEET NO. 5 OF 10 SHEETS STA. 26+50 TO STA. 52+74

ILLINOIS FED. AID PROJECT



TRAFFIC CONTROL AND PROTECTION FOR SIDE ROADS, INTERSECTIONS, AND DRIVEWAYS

NOTES:

- A. FOR NO LANE RESTRICTION ON THE SIDE ROAD OR DRIVEWAYS**
- SIDE ROAD WITH A SPEED LIMIT OF 40 MPH (60 km/h) OR LESS AS SHOWN ON THE DRAWING AND AS DIRECTED BY THE ENGINEER:
 - ONE ROAD CONSTRUCTION AHEAD SIGN 36 x 36 (900x900) WITH A FLASHER AND FLAG MOUNTED ON IT APPROXIMATELY 200' (60 m) IN ADVANCE OF THE MAIN ROUTE.
 - THE CLOSED PORTION OF THE MAIN ROUTE SHALL BE PROTECTED BY BLOCKING WITH TYPE I, TYPE II OR TYPE III BARRICADES, 1/3 OF THE CROSS SECTION OF THE CLOSED PORTION.
 - SIDE ROAD WITH A SPEED LIMIT GREATER THAN 40 MPH (60 km/h) AS SHOWN ON THE DRAWING AND AS DIRECTED BY THE ENGINEER:
 - ONE ROAD CONSTRUCTION AHEAD SIGN 48 x 48 (1.2 m x 1.2 m) WITH A FLASHER MOUNTED ON IT APPROXIMATELY 500' (150 m) IN ADVANCE OF THE MAIN ROUTE.
 - THE CLOSED PORTION OF THE MAIN ROUTE SHALL BE PROTECTED BY BLOCKING WITH TYPE III BARRICADES, 1/2 OF THE CROSS SECTION OF THE CLOSED PORTION.
 - WHEN THE SIDE ROAD LIES BETWEEN THE BEGINNING OF THE MAINLINE SIGNING AND THE WORK ZONE, A SINGLE HEADED ARROW (M6-1) SHALL BE USED IN LIEU OF THE DOUBLE HEADED ARROW (M6-4).
- B. FOR A LANE CLOSURE ON A SIDE ROAD OR DRIVEWAY:**
- USE APPLICABLE PORTIONS OF THE TYPICAL APPLICATION OF TRAFFIC CONTROL DEVICES (STD. 70150L, STD. 701606 OR THE APPROPRIATE STANDARD). THE SPACING OF SIGNS AND BARRICADES SHALL BE ADJUSTED FOR FIELD CONDITIONS AS DIRECTED BY THE ENGINEER. THE DIRECTIONAL ARROW SHALL BE COVERED OR REMOVED WHEN NO LONGER CONSISTENT WITH THE SIDE ROAD LANE CLOSURE.
- C. ADVANCE WARNING SIGNS ARE TO BE OMITTED ON DRIVEWAY UNLESS OTHERWISE NOTED.**
- D. THE TRAFFIC CONTROL AND PROTECTION FOR SIDE ROADS, INTERSECTIONS, AND DRIVEWAYS SHALL BE INCIDENTAL TO THE COST OF SPECIFIED TRAFFIC CONTROL STANDARDS OR ITEMS.**

All dimensions are in millimeters (inches) unless otherwise shown.

FILE NAME = W:\distatd\22x34\tc18.dgn	USER NAME = gaglianobx	DESIGNED - LHA	REVISED - J. OBERLE 10-18-95
		DRAWN -	REVISED - A. HOUSEH 03-06-96
	PLOT SCALE = 58,000 / IN.	CHECKED -	REVISED - A. HOUSEH 10-15-96
	PLOT DATE = 1/4/2008	DATE - 06-89	REVISED - T. RAMMACHER 01-06-00

**STATE OF ILLINOIS
DEPARTMENT OF TRANSPORTATION**

**TRAFFIC CONTROL AND PROTECTION FOR
SIDE ROADS, INTERSECTIONS, AND DRIVEWAYS**

SCALE: NONE SHEET NO. 1 OF 1 SHEETS STA. TO STA.

F.A.U. RTE.	SECTION	COUNTY	TOTAL SHEETS	SHEET NO.
TC-10		CONTRACT NO.		
FED. ROAD DIST. NO. 1 ILLINOIS FED. AID PROJECT				

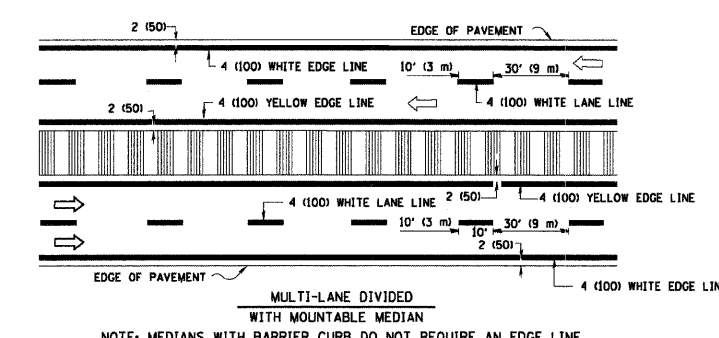
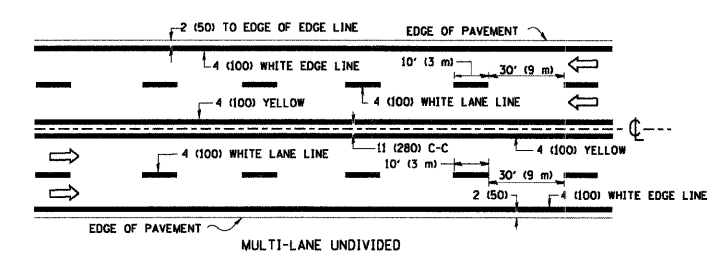
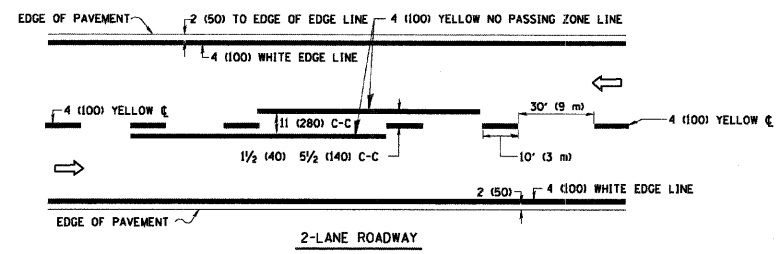
FILE NAME = 3376 OLD BARRINGTON.DWG	USER NAME =	DESIGNED - BVS	REVISED - 10/16/09
		DRAWN - BVS	
	PLOT SCALE = N.T.S.	CHECKED - DJG	
	PLOT DATE = 8/3/09	DATE - 8/3/09	

**OLD BARRINGTON ROAD
RESURFACING PROGRAM**

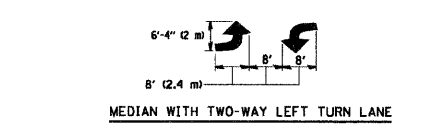
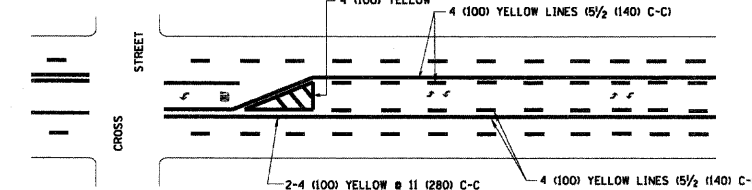
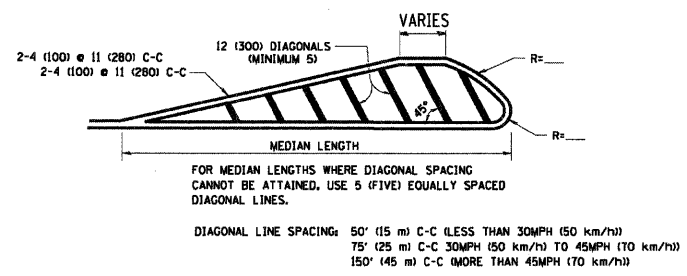
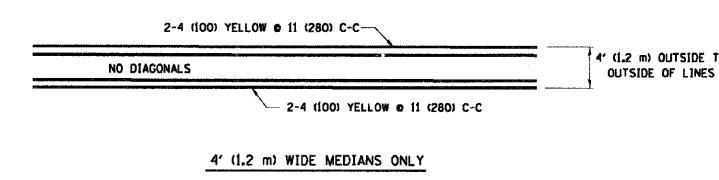
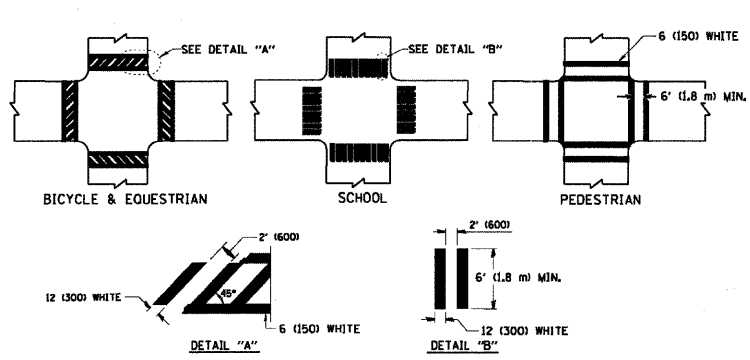
DETAILS

SCALE: NONE SHEET NO. 6 OF 10 SHEETS STA. TO STA.

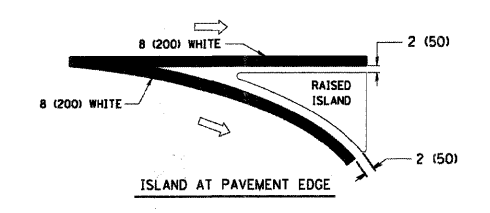
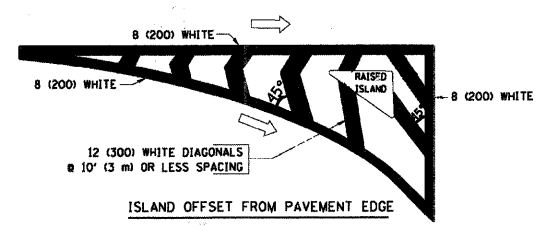
F.A.U. RTE.	SECTION	COUNTY	TOTAL SHEETS	SHEET NO.
2953	09-00006-00-RS	LAKE	10	6
CONTRACT NO. 63393				
ILLINOIS FED. AID PROJECT				



TYPICAL LANE AND EDGE LINE MARKING



TYPICAL TURN LANE MARKING



TYPICAL ISLAND MARKING

TYPE OF MARKING	WIDTH OF LINE	PATTERN	COLOR	SPACING / REMARKS
CENTERLINE ON 2 LANE PAVEMENT	4 (100)	SKIP-DASH	YELLOW	10' (3 m) LINE WITH 30' (9 m) SPACE
CENTERLINE ON MULTI-LANE UNDIVIDED PAVEMENT	2 @ 4 (100)	SOLID	YELLOW	11 (280) C-C
NO PASSING ZONE LINES FOR ONE DIRECTION FOR BOTH DIRECTIONS	4 (100) 2 @ 4 (100)	SOLID SOLID	YELLOW YELLOW	5 1/2 (140) C-C FROM SKIP-DASH CENTERLINE 11 (280) C-C OMIT SKIP-DASH CENTERLINE BETWEEN
LANE LINES	4 (100) 5 (125) ON FREEWAYS	SKIP-DASH SKIP-DASH	WHITE WHITE	10' (3 m) LINE WITH 30' (9 m) SPACE
DOTTED LINES (EXTENSIONS OF CENTER, LANE OR TURN LANE MARKINGS)	SAME AS LINE BEING EXTENDED	SKIP-DASH	SAME AS LINE BEING EXTENDED	2' (600) LINE WITH 6' (1.8 m) SPACE
EDGE LINES	4 (100)	SOLID	YELLOW-LEFT WHITE-RIGHT	OUTLINE MOUNTABLE MEDIANS IN YELLOW; EDGE LINES ARE NOT USED NEXT TO BARRIER CURB
TURN LANE MARKINGS	6 (150) LINE; FULL SIZE LETTERS & SYMBOLS (8' (2.4m))	SOLID	WHITE	SEE TYPICAL TURN LANE MARKING DETAIL
TWO WAY LEFT TURN MARKING	2 @ 4 (100) EACH DIRECTION 8' (2.4m) LEFT ARROW	SKIP-DASH AND SOLID IN PAIRS	YELLOW WHITE	10' (3 m) LINE WITH 30' (9 m) SPACE FOR SKIP-DASH; 5 1/2 (140) C-C BETWEEN SOLID LINE AND SKIP-DASH LINE SEE TYPICAL TWO-WAY LEFT TURN MARKING DETAIL
CROSSWALK LINES (PEDESTRIAN) A. DIAGONALS (BICYCLE & EQUESTRIAN) B. LONGITUDINAL BARS (SCHOOL)	2 @ 6 (150) 12 (300) @ 45° 12 (300) @ 90°	SOLID SOLID SOLID	WHITE WHITE WHITE	NOT LESS THAN 6' (1.8 m) APART 2' (600) APART 2' (600) APART SEE TYPICAL CROSSWALK MARKING DETAILS.
STOP LINES	24 (600)	SOLID	WHITE	PLACE 4' (1.2 m) IN ADVANCE OF AND PARALLEL TO CROSSWALK, IF PRESENT. OTHERWISE, PLACE AT DESIRED STOPPING POINT, PARALLEL TO CROSSROAD CENTERLINE, WHERE POSSIBLE
PAINTED MEDIANS	2 @ 4 (100) WITH 12 (300) DIAGONALS @ 45° NO DIAGONALS USED FOR 4' (1.2 m) WIDE MEDIANS	SOLID	YELLOW; TWO WAY TRAFFIC WHITE; ONE WAY TRAFFIC	11 (280) C-C FOR THE DOUBLE LINE SEE TYPICAL PAINTED MEDIAN MARKING.
GORE MARKING AND CHANNELIZING LINES	8 (200) WITH 12 (300) DIAGONALS @ 45°	SOLID	WHITE	DIAGONALS: 15' (4.5 m) C-C (LESS THAN 30MPH (50 km/h)) 20' (6 m) C-C (30MPH (50 km/h) TO 45MPH (70 km/h)) 30' (9 m) C-C (OVER 45MPH (70 km/h))
RAILROAD CROSSING	24 (600) TRANSVERSE LINES; "RR" IS 6' (1.8 m) LETTERS; 16 (400) LINE FOR "X"	SOLID	WHITE	SEE STATE STANDARD 780001 AREA OF: "R"=3.6 SQ. FT. (0.33 m ²) EACH "X"=54.0 SQ. FT. (5.0 m ²)
SHOULDER DIAGONALS	12 (300) @ 45°	SOLID	WHITE - RIGHT YELLOW - LEFT	50' (15 m) C-C (LESS THAN 30MPH (50 km/h)) 75' (25 m) C-C (30 MPH (50 km/h) TO 45MPH (70 km/h)) 150' (45 m) C-C (OVER 45MPH (70 km/h))

FOR FURTHER DETAILS ON PAVEMENT MARKING REFER TO STANDARD SPECIFICATIONS FOR ROAD AND BRIDGE CONSTRUCTION AND STATE STANDARD 780001.

All dimensions are in inches (millimeters) unless otherwise shown.

FILE NAME = W:\diststd\22x34\vc13.dgn	USER NAME = geglennob	DESIGNED - EVERS	REVISED - T. RAMMACHER 10-27-94
		DRAWN - BVS	REVISED - A. HOUSEH 10-09-96
	PLOT SCALE = 50.000' / IN.	CHECKED - DJG	REVISED - A. HOUSEH 10-17-96
	PLOT DATE = 1/4/2006	DATE - 03-19-90	REVISED - T. RAMMACHER 01-06-00

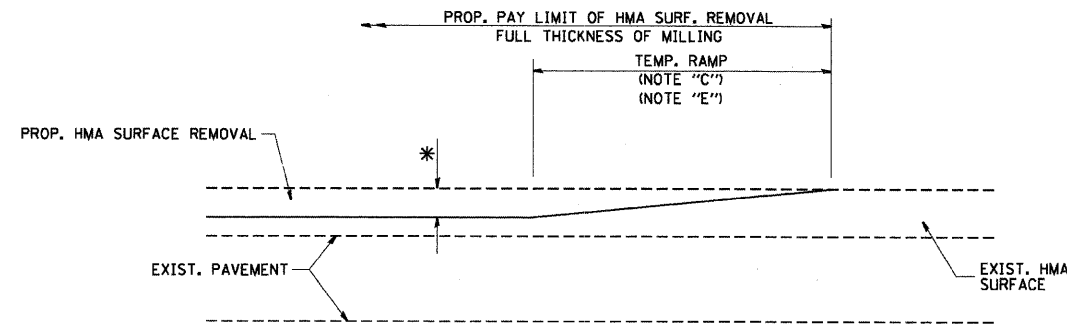
STATE OF ILLINOIS
DEPARTMENT OF TRANSPORTATION

DISTRICT ONE		F.A.U. RTE.	SECTION	COUNTY	TOTAL SHEETS	SHEET NO.
TYPICAL PAVEMENT MARKINGS						
SCALE: NONE	SHEET NO. 1 OF 1 SHEETS	STA.	TO STA.			
		TC-13		CONTRACT NO.		
FED. ROAD DIST. NO. 1 ILLINOIS FED. AID PROJECT						

FILE NAME = 3376 OLD BARRINGTON.DWG	USER NAME =	DESIGNED - BVS	REVISED - 10/16/09
		DRAWN - BVS	
	PLOT SCALE = N.T.S.	CHECKED - DJG	
	PLOT DATE = 8/3/09	DATE - 8/3/09	

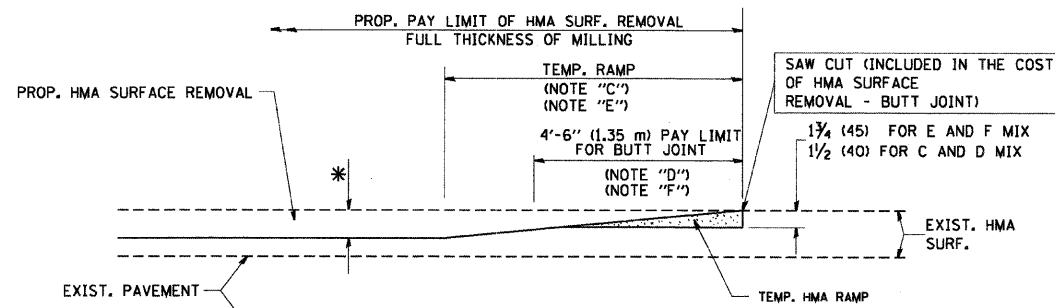
OLD BARRINGTON ROAD
RESURFACING PROGRAM

DETAILS		F.A.U. RTE.	SECTION	COUNTY	TOTAL SHEETS	SHEET NO.
SCALE: NONE	SHEET NO. 7 OF 10 SHEETS	STA.	TO STA.			
		LAKE		CONTRACT NO. 63393		
ILLINOIS FED. AID PROJECT						



MILLED TEMPORARY RAMP
(FOR BUTT JOINT AND HMA TAPER SEE DETAIL BELOW)

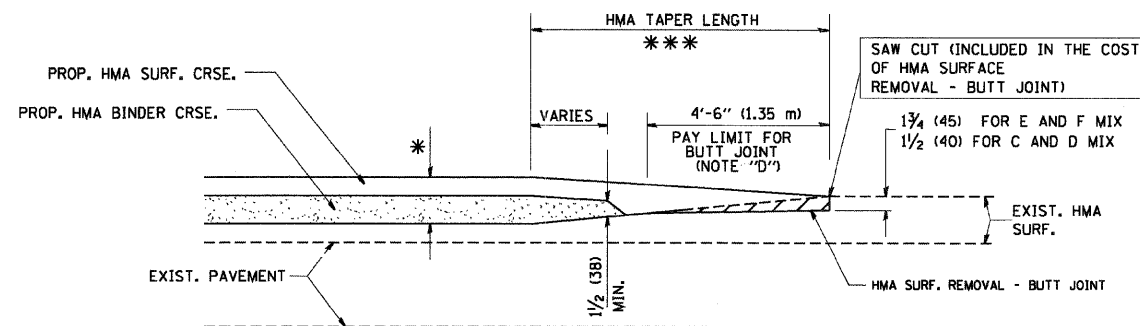
OPTION 1



HMA CONSTRUCTED TEMPORARY RAMP
(FOR BUTT JOINT AND HMA TAPER SEE DETAIL BELOW)

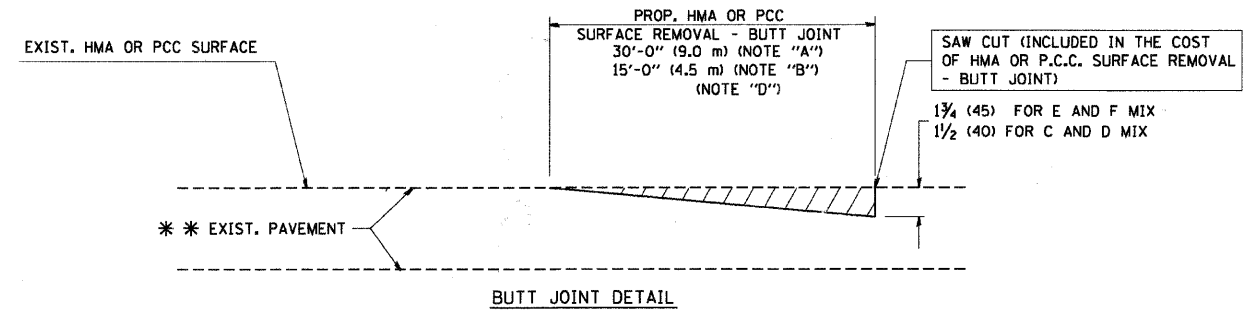
OPTION 2

TYPICAL TEMPORARY RAMP

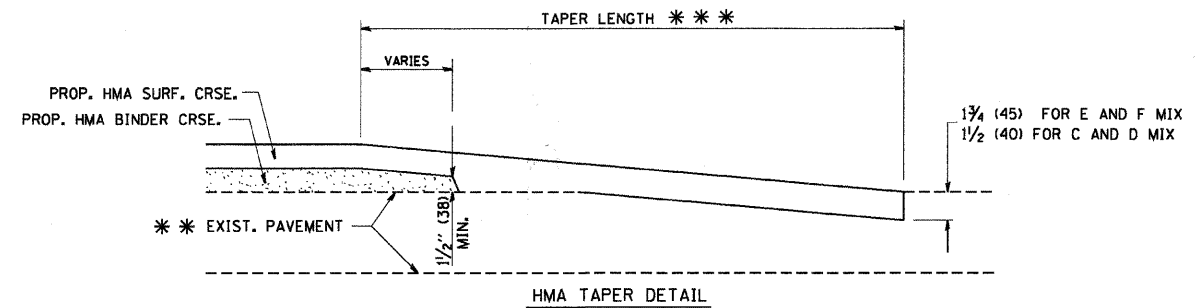


BUTT JOINT AND HMA TAPER

TYPICAL BUTT JOINT AND HMA TAPER
FOR MILLING AND RESURFACING



BUTT JOINT DETAIL



HMA TAPER DETAIL

TYPICAL BUTT JOINT AND HMA TAPER
FOR RESURFACING ONLY

** PC CONCRETE, HMA OR HMA RESURFACED PAVEMENT.

NOTES

- A: MAINLINE ROADWAYS AND MAJOR SIDE ROADS.
- B: MINOR SIDE ROADS.
- C: THE TEMP. RAMP SHALL BE CONSTRUCTED IMMEDIATELY UPON REMOVAL OF THE EXISTING HMA SURFACE.
- D: THE BUTT JOINT SHALL BE CONSTRUCTED IMMEDIATELY PRIOR TO PLACING THE PROPOSED HMA COURSES.
- E: TAPER THE TEMP. RAMP AT A RATE OF 3'-0" (900 mm) PER 1 INCH (25 mm) OF MILLING THICKNESS.
- F: INSTALLATION AND REMOVAL OF THE 4'-6" (1.35 m) TEMP. RAMP IS INCLUDED IN COST OF HMA SURFACE REMOVAL - BUTT JOINT
- G: SEE ARTICLE 406.08 AND 406.14 OF THE STANDARD SPECIFICATIONS FOR "HMA AND/OR PCC SURFACE REMOVAL, BUTT JOINT".
- * SEE TYPICAL SECTIONS FOR MILLING THICKNESS.
- *** 20'-0" (6.1 m) PER 1 (25) RESURFACING (NOTE "A")
10'-0" (3.0 m) PER 1 (25) RESURFACING (NOTE "B")

BASIS OF PAYMENT:

THE BUTT JOINT WILL BE PAID FOR AT THE CONTRACT UNIT PRICE PER SQUARE YARD (SQUARE METER) FOR "HOT-MIX ASPHALT SURFACE REMOVAL - BUTT JOINT" OR FOR "PORTLAND CEMENT CONCRETE SURFACE REMOVAL - BUTT JOINT".

ALL DIMENSIONS ARE IN INCHES (MILLIMETERS) UNLESS OTHERWISE SHOWN.

FILE NAME = W:\d\statef\22x34\bd32.dgn	USER NAME = geglienobt	DESIGNED - M. DE YONG	REVISED - R. SHAH 10-25-94
		DRAWN - BVS	REVISED - A. ABBAS 03-21-97
		CHECKED - DJG	REVISED - M. GOMEZ 04-06-01
		DATE - 06-13-90	REVISED - R. BORO 01-01-07

STATE OF ILLINOIS
DEPARTMENT OF TRANSPORTATION

BUTT JOINT AND
HMA TAPER DETAILS

SCALE: NONE	SHEET NO. 1 OF 1 SHEETS	STA. TO STA.	F.A.U. RTE.	SECTION	COUNTY	TOTAL SHEETS	SHEET NO.
			BD400-05	BD32			
			CONTRACT NO.				
			FED. ROAD DIST. NO. 1 ILLINOIS FED. AID PROJECT				

FILE NAME =
3376 OLD BARRINGTON.DWG

USER NAME =

DESIGNED -
BVS

REVISED -
10/16/09

DRAWN -
BVS

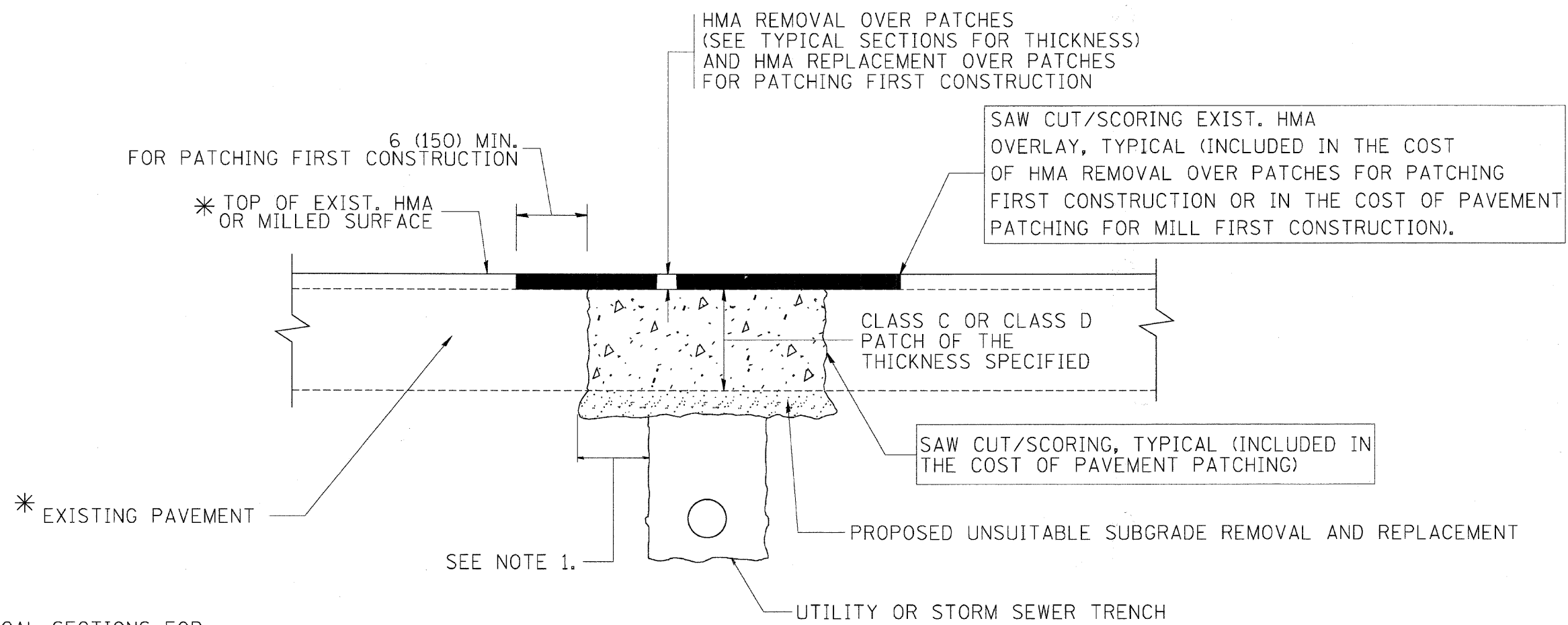
CHECKED -
DJG

DATE -
8/3/09

OLD BARRINGTON ROAD
RESURFACING PROGRAM

DETAILS

SCALE: NONE	SHEET NO. 8 OF 10 SHEETS	STA. TO STA.	F.A.U. RTE.	SECTION	COUNTY	TOTAL SHEETS	SHEET NO.
			2953	09-00006-00-RS	LAKE	10	8
			CONTRACT NO. 63393				
			ILLINOIS FED. AID PROJECT				



* SEE TYPICAL SECTIONS FOR THICKNESS AND MATERIALS

NOTES:

1. THE WIDTH OF THE FULL DEPTH PATCH OVER A TRENCH SHALL BE 12 (300) WIDER ON EACH SIDE OF THE TRENCH.
2. FOR METHOD OF MEASUREMENT AND BASIS OF PAYMENT, SEE RECURRING SPECIAL PROVISION "PATCHING WITH HOT-MIX ASPHALT OVERLAY REMOVAL".

SEQUENCE OF CONSTRUCTION (PATCHING FIRST)

1. REMOVE THE EXISTING HMA MATERIAL OVER THE AREA TO BE PATCHED.
2. REMOVE AND REPLACE WITH CLASS C OR D PATCH.
3. REPLACE HMA MATERIAL OVER THE AREA TO BE PATCHED.

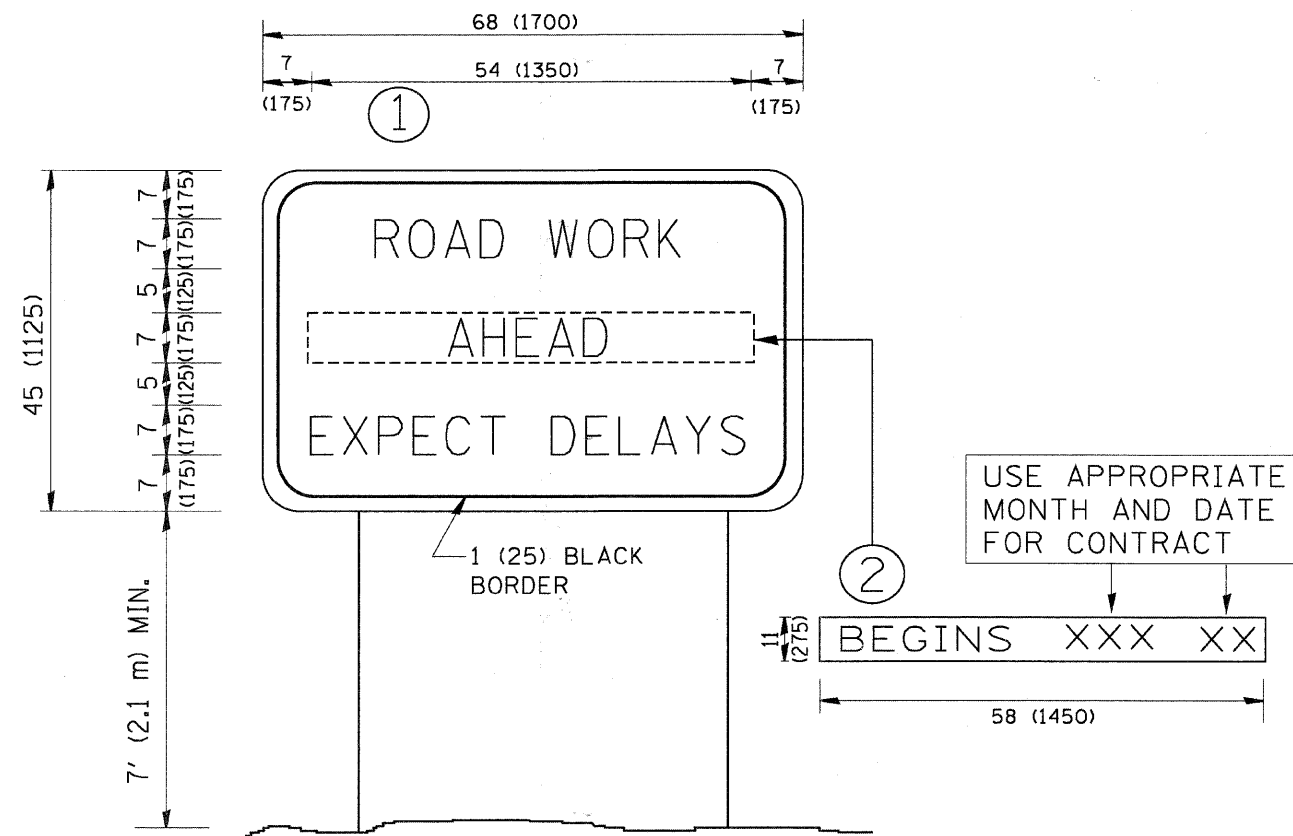
SEQUENCE OF CONSTRUCTION (MILLING FIRST)

1. MILL HMA FIRST IF THERE IS AT LEAST 4 1/2 INCHES OR MORE OF HMA MATERIAL ON TOP OF THE EXISTING PAVEMENT OR IF THE PAVEMENT IS FULL DEPTH HMA. A MINIMUM OF 2 INCHES OF HMA MATERIAL SHALL BE IN PLACE AFTER MILLING.
2. REMOVE AND REPLACE WITH FULL DEPTH CLASS D PATCHES TO TOP OF MILLED SURFACE.

ALL DIMENSIONS ARE IN INCHES (MILLIMETERS) UNLESS OTHERWISE SHOWN.

FILE NAME = c:\projects\distad22x34\bd22.dgn	USER NAME = baverdl	DESIGNED - R. SHAH	REVISED - A. ABBAS 04-27-98	STATE OF ILLINOIS DEPARTMENT OF TRANSPORTATION	PAVEMENT PATCHING FOR HMA SURFACED PAVEMENT			F.A.J. RTE.	SECTION	COUNTY	TOTAL SHEETS	SHEET NO.
		DRAWN -	REVISED - R. BORO 01-01-07		SCALE: NONE	SHEET NO. 1 OF 1 SHEETS	STA.	TO STA.	BD400-04 (BD-22)		CONTRACT NO.	
		CHECKED -	REVISED - R. BORO 09-04-07									
		DATE - 10-25-94	REVISED - K. ENG 10-27-08									

FILE NAME = 3376 OLD BARRINGTON.DWG	USER NAME =	DESIGNED - BVS	REVISED - 10/16/09	OLD BARRINGTON ROAD RESURFACING PROGRAM	DETAILS			F.A.J. RTE.	SECTION	COUNTY	TOTAL SHEETS	SHEET NO.
		DRAWN - BVS			SCALE: NONE	SHEET NO. 9 OF 10 SHEETS	STA.	TO STA.	09-00006-00-RS		LAKE	10
		CHECKED - DJG										
		DATE - 8/3/09										



NOTES:

1. USE BLACK LETTERING ON ORANGE BACKGROUND.
2. ERECT SIGNS IN ADVANCE OF THE LOCATION FOR THE "ROAD CONSTRUCTION AHEAD" SIGN AT LOCATIONS AS DIRECTED BY THE ENGINEER.
3. ERECT SIGN ① WITH INSTALLED PANEL ② ONE WEEK PRIOR TO THE START OF CONSTRUCTION.
4. REMOVE PANEL ② SOON AFTER THE START OF CONSTRUCTION.
5. SEE SPECIAL PROVISION FOR "TEMPORARY INFORMATION SIGNING" FOR ADDITIONAL INFORMATION.
6. ONE SIGN ASSEMBLY EQUALS 25.70 SQ. FT. (2.3 SQ. M.)
7. SHALL BE PAID FOR AS TEMPORARY INFORMATION SIGNING.

ALL DIMENSIONS ARE IN INCHES (MILLIMETERS) UNLESS OTHERWISE SHOWN.

FILE NAME = W:\dists\std\22-34\to22.dgn	USER NAME = ggg1enobt	DESIGNED - DRAWN -	REVISOR - REVISOR -
		DESIGNED - DRAWN -	REVISOR - REVISOR -
		CHECKED - DATE -	REVISOR - REVISOR -
		CHECKED - DATE -	REVISOR - REVISOR -

STATE OF ILLINOIS
DEPARTMENT OF TRANSPORTATION

ARTERIAL ROAD INFORMATION SIGN		F.A.U. RTE.	SECTION	COUNTY	TOTAL SHEETS	SHEET NO.
SCALE: NONE	SHEET NO. 1 OF 1 SHEETS	STA.	TO STA.			

TC-22	CONTRACT NO.
FED. ROAD DIST. NO. 1 ILLINOIS FED. AID PROJECT	

FILE NAME = 3376 OLD BARRINGTON.DWG	USER NAME =	DESIGNED - DRAWN -	REVISOR - REVISOR -
		DESIGNED - DRAWN -	REVISOR - REVISOR -
		CHECKED - DATE -	REVISOR - REVISOR -
		CHECKED - DATE -	REVISOR - REVISOR -

OLD BARRINGTON ROAD
RESURFACING PROGRAM

DETAILS

SCALE: NONE		SHEET NO. 10 OF 10 SHEETS	STA.	TO STA.	F.A.U. RTE.	SECTION	COUNTY	TOTAL SHEETS	SHEET NO.
					2953	09-00006-00-RS	LAKE	10	10
					CONTRACT NO. 63393				
ILLINOIS FED. AID PROJECT									