

F.A.P. RTE.	SECTION	COUNTY	TOTAL SHEETS	SHEET NO.
742	34BR-1	WINNEBAGO	78	1
		ILLINOIS	CONTRACT NO. 64E68	

STATE OF ILLINOIS
DEPARTMENT OF TRANSPORTATION
DIVISION OF HIGHWAYS

**PROPOSED
HIGHWAY PLANS**

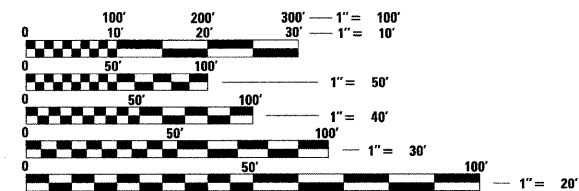
FAP ROUTE 742
SECTION 34BR-1
PROJECT ACF-ACBRF-0742 (129)
BRIDGE REPLACEMENT
WINNEBAGO COUNTY

C-92-002-10

RIE

FOR INDEX OF SHEETS, SEE SHEET NO. 2
FOR STATE STANDARDS, SEE SHEET NO. 2

DESIGN DESIGNATION
22,300 (2029) - MAJOR PRINCIPAL ARTERIAL



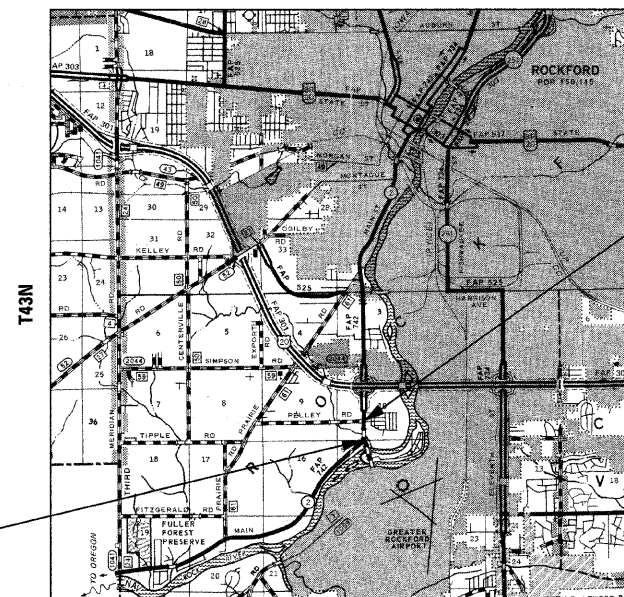
FULL SIZE PLANS HAVE BEEN PREPARED USING STANDARD ENGINEERING SCALES. REDUCED SIZED PLANS WILL NOT CONFORM TO STANDARD SCALES. IN MAKING MEASUREMENTS ON REDUCED PLANS, THE ABOVE SCALES MAY BE USED.

J.U.L.I.E.
JOINT UTILITY LOCATION INFORMATION FOR EXCAVATION
1-800-892-0123
OR 811

PROJECT ENGINEER: MASOOD AHMAD
SQUAD LEADER: SAMEER (SAM) A. ABDULLAH
815-284-5935
PROJECT MANAGER: GREGORY R. BRUMM
DLZ ILLINOIS, INC.
847-640-0840

CONTRACT NO. 64E68
ROCKFORD TOWNSHIP 10 & 15

WINNEBAGO COUNTY SECTION 34BR-1 F.A.P. ROUTE 742



GROSS LENGTH = 1,081.31 FT. = 0.20 MILE
NET LENGTH = 1,081.31 FT. = 0.20 MILE

SECTION ENDS
STA 219 + 45.61

SECTION BEGINS
STA 208 + 64.30



LOCATION OF SECTION INDICATED THUS: - [black rectangle] -

ROADWAY AND STRUCTURES DESIGNED BY



	<p><i>Gregory R. Brumm</i> SIGNATURE</p> <p>11-30-2011 EXPIRES</p>		<p><i>Peter R. Dombrowski</i> SIGNATURE</p> <p>11-30-2010 EXPIRES</p>
--	--	--	---

STATE OF ILLINOIS
DEPARTMENT OF TRANSPORTATION
DIVISION OF HIGHWAYS

SUBMITTED Oct 9 2009

George F. Ryan
DEPUTY DIRECTOR OF HIGHWAYS, REGION ENGINEER

December 4, 2009
Charles J. Ingersoll
ENGINEER OF DESIGN AND ENVIRONMENT

December 4, 2009
Christine M. Reed
DIRECTOR OF HIGHWAYS, CHIEF ENGINEER

**PRINTED BY THE AUTHORITY
OF THE STATE OF ILLINOIS**