

Chain IL2 contains:  
CUR N350 11350 CUR RT2-1 CUR RT2-2

Beginning chain IL2 description  
=====

Curve Data  
\*-----\*

Curve N350

P.I. Station 205+42.83 N 2,020,030.0642 E 2,583,011.1660  
Delta = 22° 03' 13.01" (RT)  
Degree = 6° 42' 10.12"  
Tangent = 166.5718'  
Length = 329.0204'  
Radius = 854.8023'  
External = 16.0784'  
Long Chord = 326.9931'  
Mid. Ord. = 15.7815'  
P.C. Station 203+76.26 N 2,019,915.4413 E 2,582,890.3034  
P.T. Station 207+05.28 N 2,020,090.9198 E 2,583,166.2233  
C.C. N 2,019,295.2069 E 2,583,478.5179

Course from PT N350 to 1350 N 68° 34' 17.07" E Dist 89.1327'

Point 1350 N 2,020,123.4837 E 2,583,249.1946 Sta 207+94.41

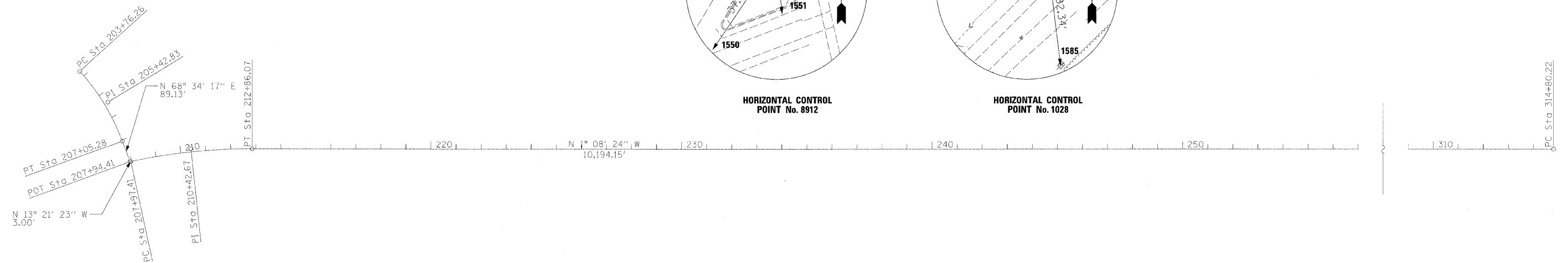
Course from 1350 to PC RT2-1 N 13° 21' 23.01" W Dist 3.0038'

Curve Data  
\*-----\*

Curve RT2-1

P.I. Station 210+42.67 N 2,020,365.0275 E 2,583,191.8450  
Delta = 12° 12' 58.62" (RT)  
Degree = 2° 30' 00.02"  
Tangent = 245.2549'  
Length = 488.6502'  
Radius = 2,291.8261'  
External = 13.0854'  
Long Chord = 487.7251'  
Mid. Ord. = 13.0111'  
P.C. Station 207+97.41 N 2,020,126.4062 E 2,583,248.5007  
P.T. Station 212+86.07 N 2,020,610.2339 E 2,583,186.9651  
C.C. N 2,020,655.8351 E 2,585,478.3375

Course from PT RT2-1 to PC RT2-2 N 1° 08' 24.39" W Dist 10,194.1525'

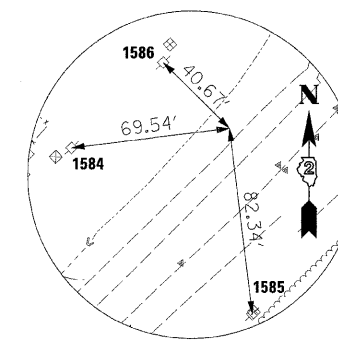
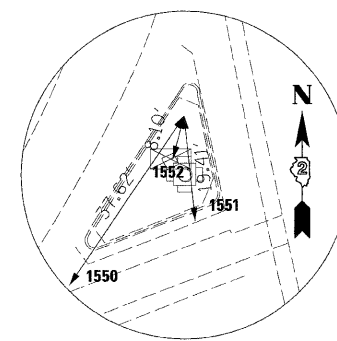


HORIZONTAL CONTROL POINTS							
POINT	NORTH	EAST	ELEVATION	CHAIN	STATION	OFFSET	DESCRIPTION
8912	2020156.3161	2583197.1531	708.0089	IL2	208+37.62 R 2	43.4086' LT	PIN & CAP
1028	2019906.4411	2582837.3620	707.4326	IL2	203+31.65 R 2	29.9001' LT	PIN & CAP

BENCH MARKS							
POINT	NORTH	EAST	ELEVATION	CHAIN	STATION	OFFSET	DESCRIPTION
1415	2019904.830	2583257.9700	708.1812	IL2	207+22.42	207.4403' RT	DISK TOP OF PARAPET WALL

SURVEY WORK POINTS							
POINT	NORTH	EAST	ELEVATION	CHAIN	STATION	OFFSET	DESCRIPTION
180	2020040.1854	2583210.4217	706.1198	IL2	207-27.89 R 2	63.3748' RT	PK NAIL
181	2020135.4010	2583405.7864	705.1244	IL2	207+94.41 R 2	157.0446' RT	PK NAIL
182	2020292.1579	2583276.8122	706.3242	IL2	209+56.46 R 2	60.4645' RT	PK NAIL
183	2020622.6370	2583229.0983	705.7091	IL2	212+97.63 R 2	42.3717' RT	PK NAIL
184	2020294.9338	2583172.0356	708.4692	IL2	209+75.92 R 2	42.5428' LT	PK NAIL
185	2020069.9119	2583320.8614	705.2415	IL2	207+94.41 R 2	89.4766' RT	PK NAIL

REFERENCE TIES				
POINT	CHAIN	STATION	OFFSET	DESCRIPTION
1550	IL2	207+26.90	28.1923' LT	ISLAND
1551	IL2	207+52.75	30.7971' LT	TRAFFIC SIGNAL
1552	IL2	207+53.12	42.9715' LT	HANDHOLE
1584	IL2	202+75.84	71.3882' LT	POWER POLE
1585	IL2	202+82.90	36.4640' RT	POWER POLE
1586	IL2	203+30.24	70.5441' LT	POWER POLE W/LIGHT



FILE NAME =	USER NAME = #USER#	DESIGNED -	REVISED -	<b>STATE OF ILLINOIS DEPARTMENT OF TRANSPORTATION</b>	<b>HORIZONTAL AND VERTICAL CONTROL</b>	F.A.P. RTE.	SECTION	COUNTY	TOTAL SHEETS	SHEET NO.	
#FILE#	PLOT SCALE = #SCALE#	DRAWN -	REVISED -			742	348B-1	WINNEBAGO	78	16	
	PLOT DATE = #DATE#	CHECKED -	REVISED -			CONTRACT NO. 64E68					
		DATE -	REVISED -			ILLINOIS FED. AID PROJECT					