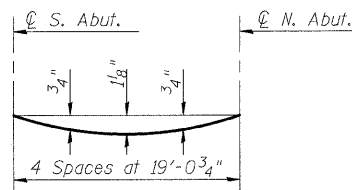


STATE OF ILLINOIS  
DEPARTMENT OF TRANSPORTATION

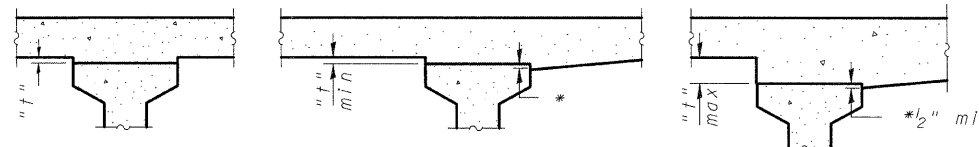


**DEAD LOAD DEFLECTION DIAGRAM**

(Includes weight of concrete, excluding beams).

Note:

The above deflections are not to be used in the field if the engineer is working from the grade elevations adjusted for dead load deflections as shown below.



\* Variable (Not Less than 1/2")

At Minimum Fillet      At Maximum Fillet

**INTERIOR BEAMS**

**EXTERIOR BEAMS**

To determine "t": After all precast prestressed beams have been erected, elevations of the top flanges of the beams shall be taken at intervals shown below. These elevations subtracted from the "Theoretical Grade Elevations Adjusted for Dead Load Deflections" shown below, minus slab thickness, equals the fillet heights "t" above top flanges of beams.

**FILLET HEIGHTS**

**BEAMS 1 & 12**

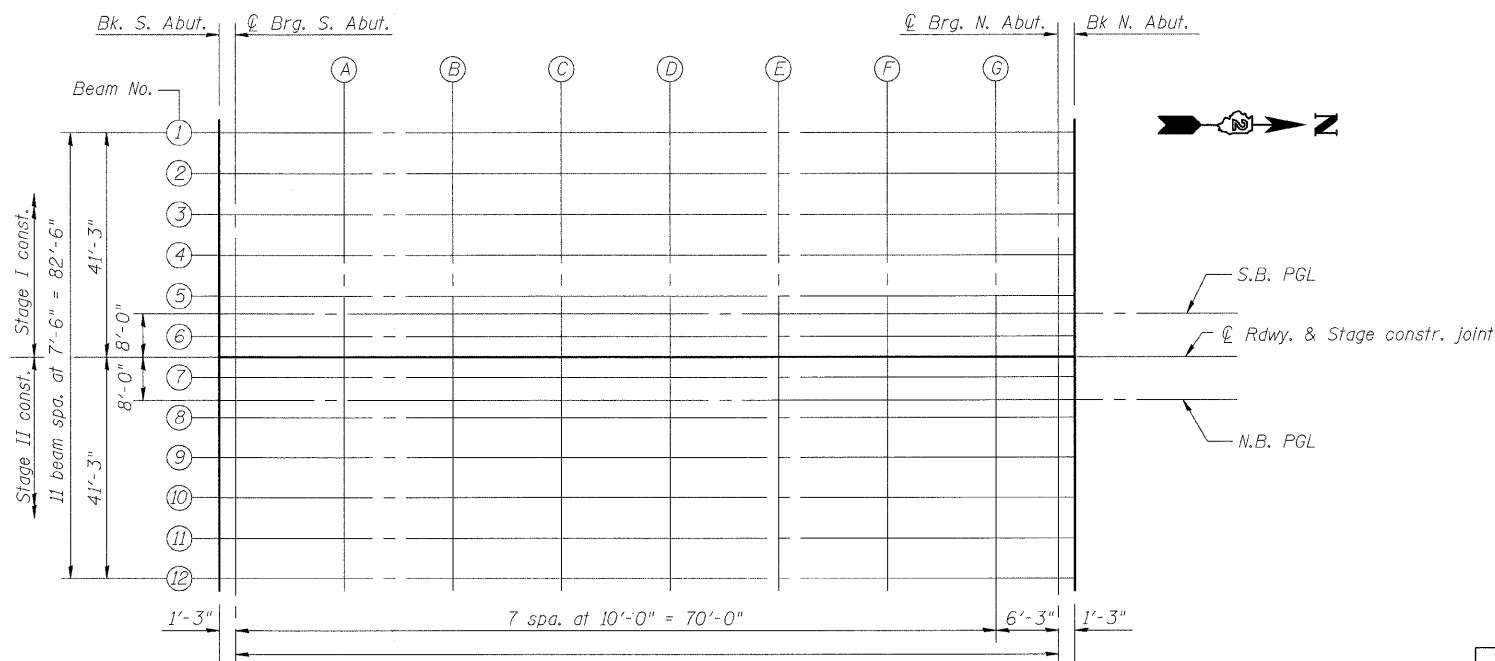
Location	Station	Offset	Theoretical Grade Elevations	Theoretical Grade Elevations Adjusted For Dead Load Deflection
Bk. of S. Abut.	215+97.27	+41.25	707.92	707.92
Brg. S. Abut.	215+98.52	+41.25	707.94	707.94
A	216+08.52	+41.25	708.06	708.10
B	216+18.52	+41.25	708.19	708.26
C	216+28.52	+41.25	708.32	708.41
D	216+38.52	+41.25	708.45	708.54
E	216+48.52	+41.25	708.58	708.66
F	216+58.52	+41.25	708.71	708.77
G	216+68.52	+41.25	708.84	708.86
Brg. N. Abut.	216+74.77	+41.25	708.92	708.92
Bk. of N. Abut.	216+76.02	+41.25	708.93	708.93

**BEAMS 2 & 11**

Location	Station	Offset	Theoretical Grade Elevations	Theoretical Grade Elevations Adjusted For Dead Load Deflection
Bk. of S. Abut.	215+97.27	+33.75	708.08	708.08
Brg. S. Abut.	215+98.52	+33.75	708.09	708.09
A	216+08.52	+33.75	708.22	708.26
B	216+18.52	+33.75	708.35	708.42
C	216+28.52	+33.75	708.48	708.56
D	216+38.52	+33.75	708.61	708.70
E	216+48.52	+33.75	708.74	708.82
F	216+58.52	+33.75	708.87	708.92
G	216+68.52	+33.75	708.99	709.02
Brg. N. Abut.	216+74.77	+33.75	709.07	709.07
Bk. of N. Abut.	216+76.02	+33.75	709.09	709.09

**BEAMS 3 & 10**

Location	Station	Offset	Theoretical Grade Elevations	Theoretical Grade Elevations Adjusted For Dead Load Deflection
Bk. of S. Abut.	215+97.27	+26.25	708.23	708.23
Brg. S. Abut.	215+98.52	+26.25	708.25	708.25
A	216+08.52	+26.25	708.38	708.41
B	216+18.52	+26.25	708.51	708.57
C	216+28.52	+26.25	708.63	708.72
D	216+38.52	+26.25	708.76	708.85
E	216+48.52	+26.25	708.89	708.97
F	216+58.52	+26.25	709.02	709.08
G	216+68.52	+26.25	709.15	709.17
Brg. N. Abut.	216+74.77	+26.25	709.23	709.23
Bk. of N. Abut.	216+76.02	+26.25	709.25	709.25



**PLAN**

**TOP OF SLAB ELEVATIONS  
STRUCTURE NO. 101-0184**

DESIGNED	PRD
CHECKED	WAT
DRAWN	RTG/PRD
CHECKED	ASP

**DLZ** DLZ Illinois, Inc.  
85 W. Algonquin Rd. Ste. 220  
Arlington Heights IL 60005

SHEET NO. 5 OF 22 SHEETS	F.A.P. RTE.	SECTION	COUNTY	TOTAL SHEETS	SHEET NO.
	742	34BR-1	WINNEBAGO	78	40
CONTRACT NO. 64E68					
FED. ROAD DIST. NO. 2 ILLINOIS FED. AID PROJECT					