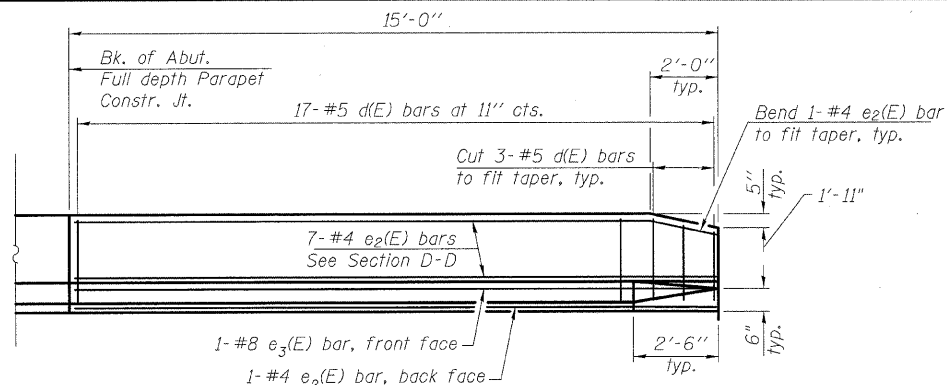


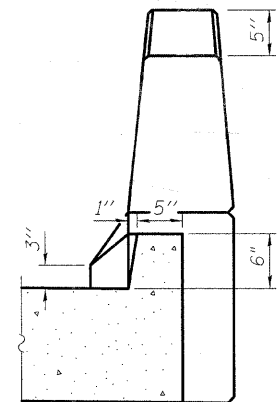
STATE OF ILLINOIS  
DEPARTMENT OF TRANSPORTATION

**MINIMUM BAR LAP**

(Parapet)  
#4 bar = 1'-4"  
#8 bar = 3'-5"

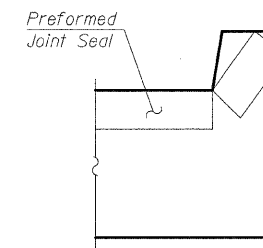


**VIEW E-E**



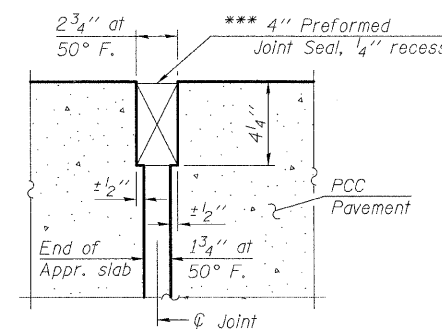
**VIEW B-B**

(Exit ends only)

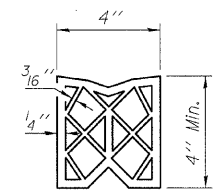


**VIEW F-F**

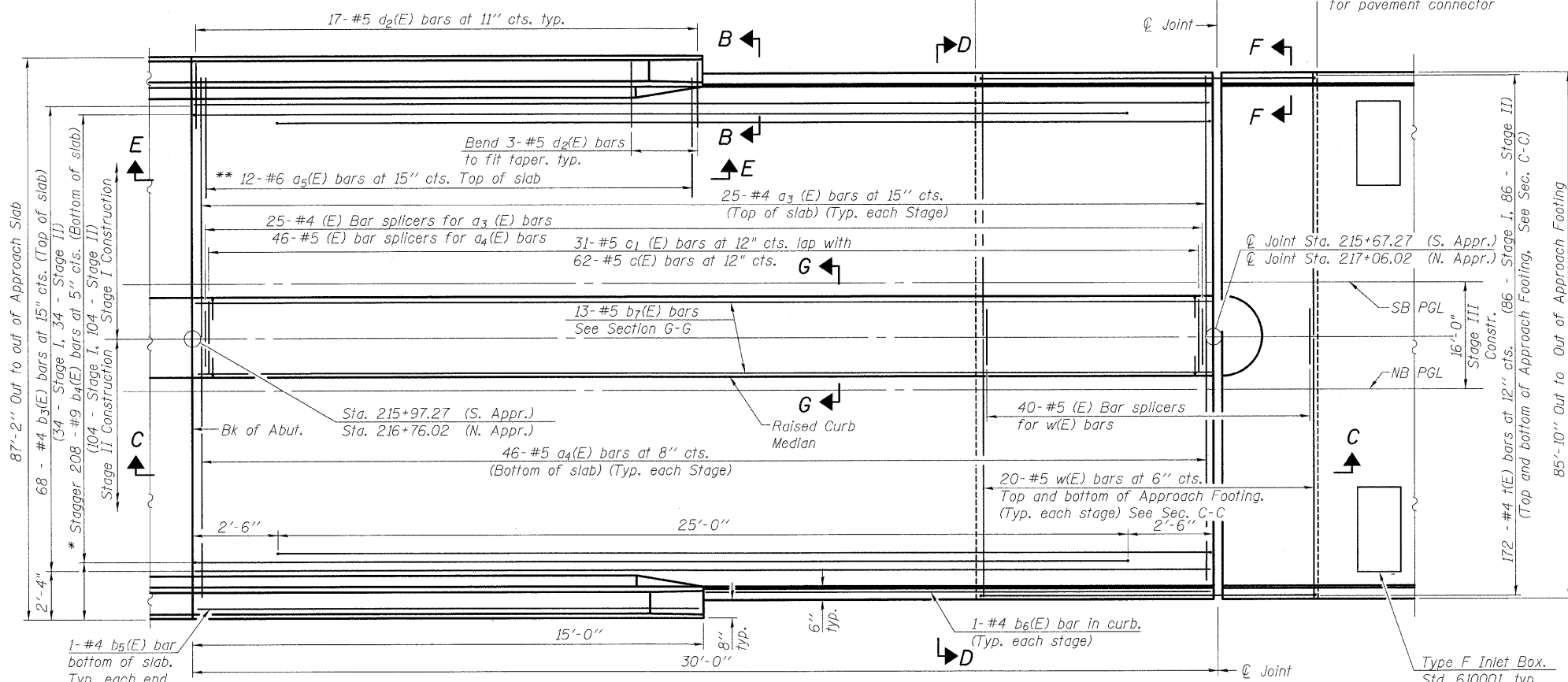
Angle Preformed Joint Seal at 45° at curbs when req'd for drainage.



**RIGID PAVEMENT  
DETAIL A**

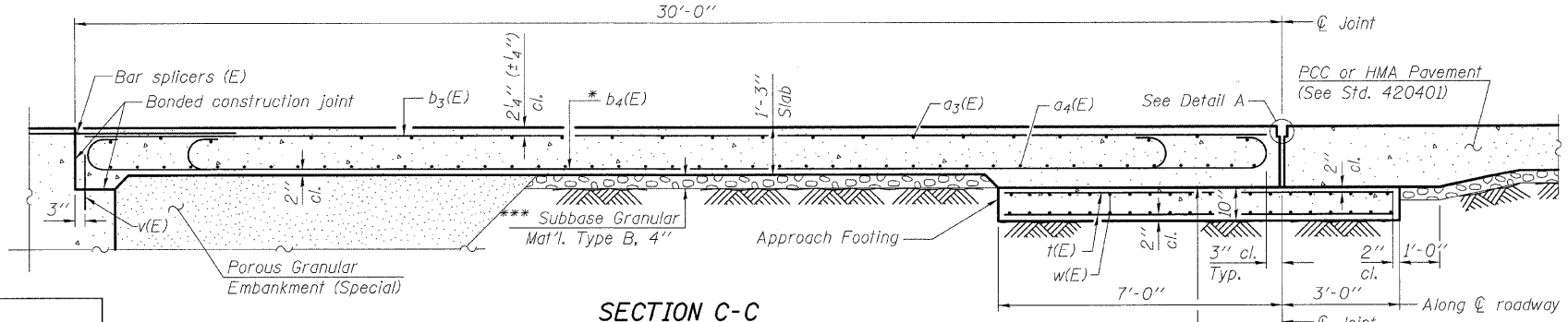


**PREFORMED  
JOINT SEAL**



**PLAN**

(North Approach Shown)



**SECTION C-C**

Notes:  
See sheet 8 of 21 for Section D-D, Section G-G, Bar detailing, and Bill of Materials.  
Approach Slab, Raised Curb Median, and Parapet concrete shall be paid for as Concrete Superstructure.  
Approach footing concrete shall be paid for as Concrete Structures.  
Reinforcement shall be paid for as Reinforcement Bars, Epoxy Coated.  
For v(E) bar details, see sheet 10 of 21.  
The approach footing maximum applied service bearing pressure (Qmax) = 2.0 ksf.  
For details of Bar Splicers, see sheet 19 of 21.  
Cost of excavation for approach footing included with Concrete Structures.  
For Porous Granular Embankment (Special) and drainage treatment details, see sheet 3 of 21.

**APPROACH SLAB PLAN AND DETAILS  
STRUCTURE NO. 101-0184**

DESIGNED	PRD
CHECKED	WAT
DRAWN	RTG/PRD
CHECKED	ASP

\* Tilt #9 b4(E) bars as required to maintain clearance.  
\*\* Alternate with a3(E) bars, typ. each parapet.  
\*\*\* Cost included with Concrete Superstructure.

**DLZ** 85 W. Algonquin Rd. Ste. 220  
Arlington Heights IL 60005  
DLZ Illinois, Inc.

SHEET NO. 8 OF 22 SHEETS	F.A.P. RTE.	SECTION	COUNTY	TOTAL SHEETS	SHEET NO.
	742	34BR-1	WINNEBAGO	78	43
CONTRACT NO. 64E68					
FED. ROAD DIST. NO. 2 ILLINOIS FED. AID PROJECT					