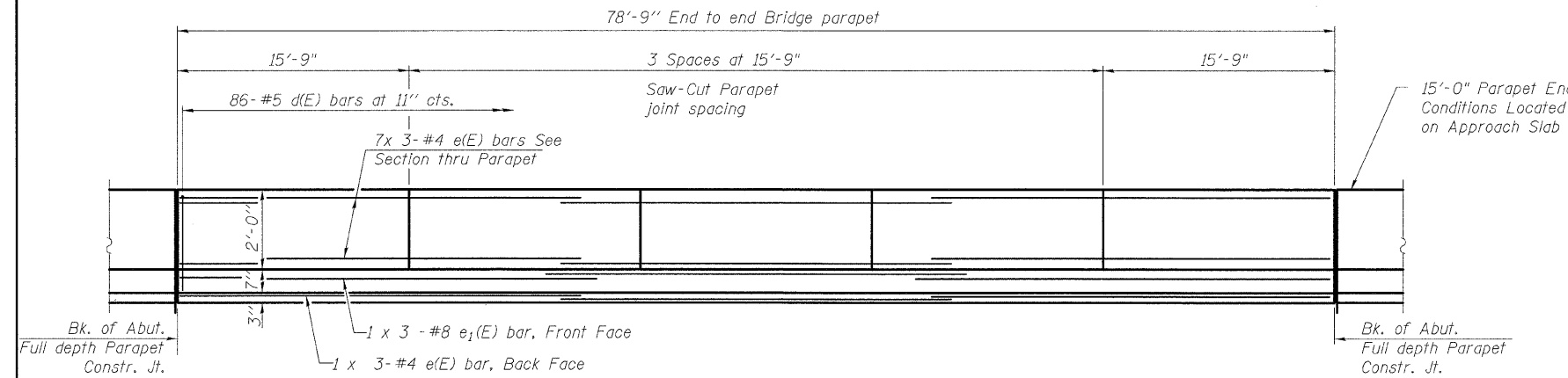
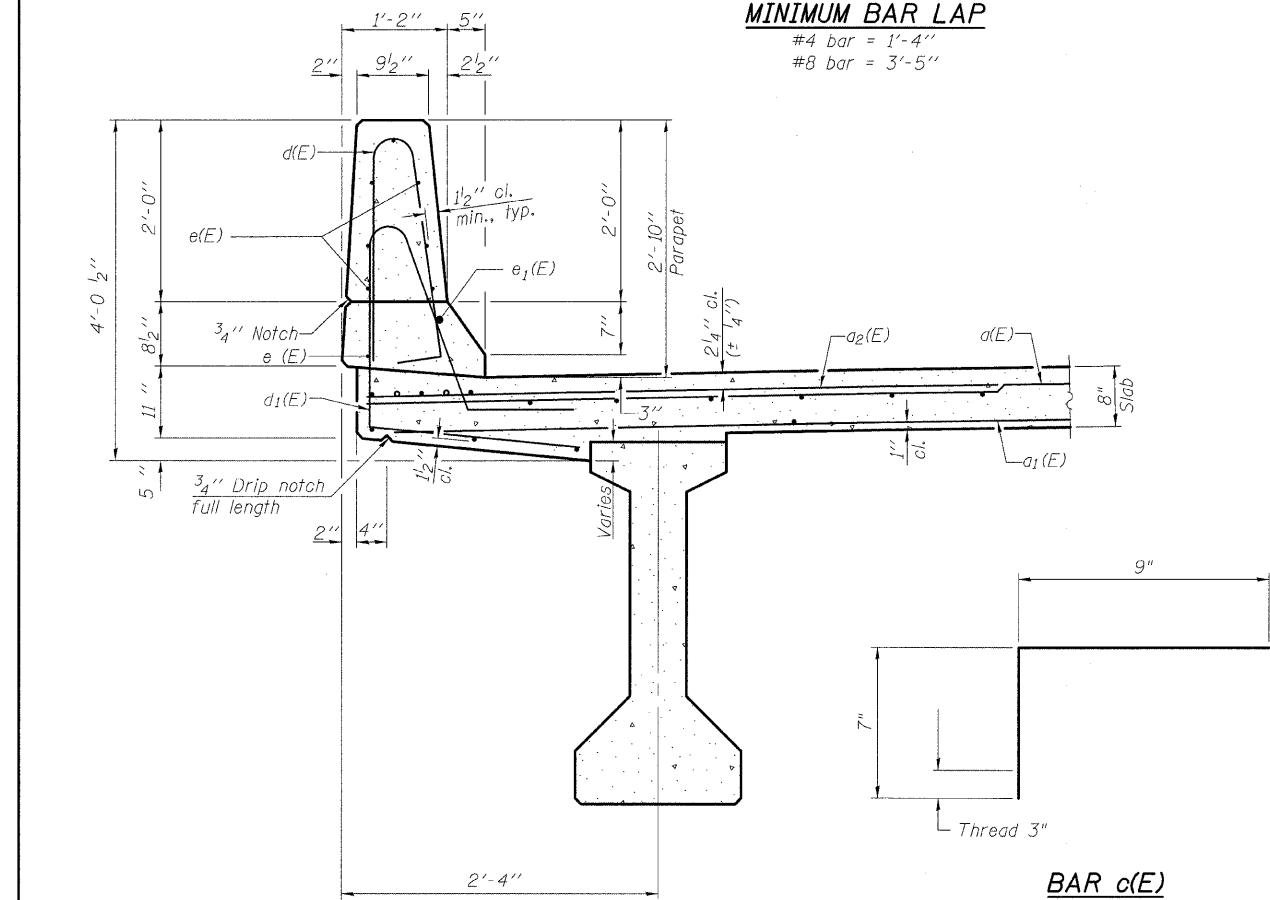


STATE OF ILLINOIS
DEPARTMENT OF TRANSPORTATION

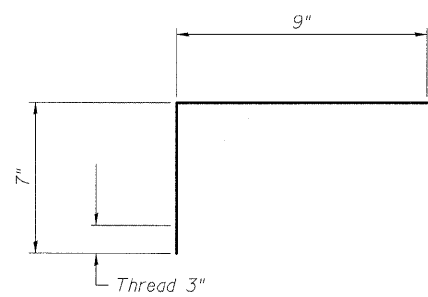


INSIDE ELEVATION OF PARAPET
(Typical each Stage)

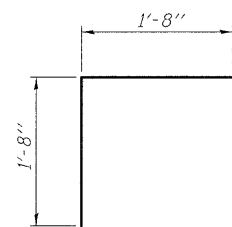
MINIMUM BAR LAP
#4 bar = 1'-4"
#8 bar = 3'-5"



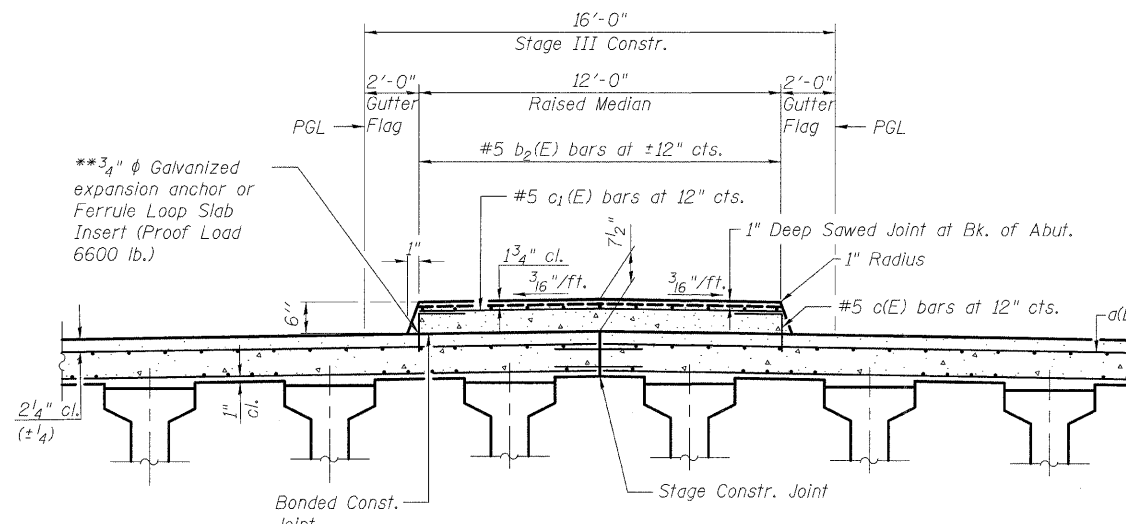
SECTION THRU PARAPET



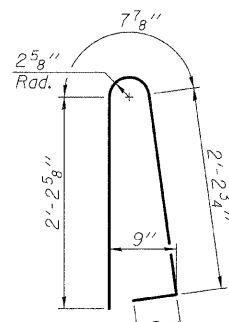
BAR c(E)



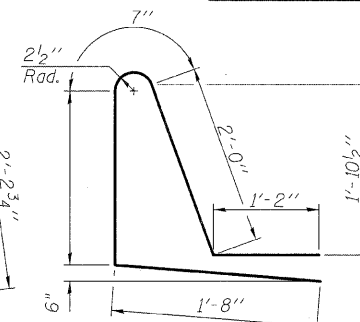
BAR v(E)



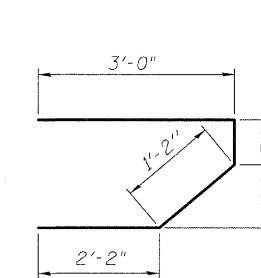
SUPERIMPOSED MEDIAN



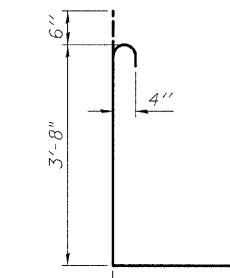
BAR d(E)



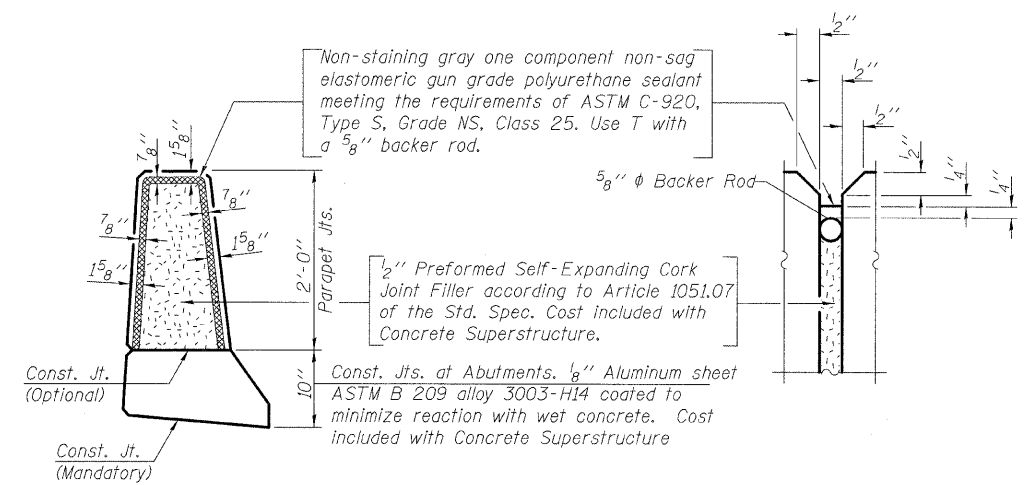
BAR d1(E)



BAR s(E)



BAR s1(E)



PARAPET JOINT DETAILS

**SUPERSTRUCTURE
BILL OF MATERIAL**

Bar	No.	Size	Length	Shape
a(E)	316	#5	43'-3"	—
a1(E)	212	#5	43'-3"	—
a2(E)	316	#6	6'-6"	—
b(E)	276	#5	27'-8"	—
b1(E)	144	#5	39'-3"	—
b2(E)	26	#5	39'-3"	—
c(E)	158	#5	1'-4"	┌
c1(E)	79	#5	11'-8"	—
d(E)	172	#5	5'-7"	└
d1(E)	172	#5	7'-10"	└
e(E)	48	#4	27'-1"	—
e1(E)	6	#8	28'-6"	—
m(E)	8	#4	43'-3"	—
m1(E)	12	#6	43'-3"	—
m2(E)	48	#6	10'-3"	—
m3(E)	22	#6	5'-8"	—
m4(E)	4	#6	1'-3"	—
s(E)	166	#5	6'-7"	┌
s1(E)	144	#4	10'-6"	└
v(E)	4	#5	3'-4"	┌
Reinforcement Bars, Epoxy Coated		Lbs.	51,370	
Concrete Superstructure		Cu. Yds.	284.7	

Notes:
Reinforcement bars designated (E) shall be epoxy coated.
Bars indicated thus 1 x 3-#5 etc. indicates 1 line of bars with 3 lengths per line.
See Sheets 9 and 12 of 21 for bar Placement.
For details of Bar Splicers see sheet 19 of 21.

**SUPERSTRUCTURE DETAILS
STRUCTURE NO. 101-0184**

DESIGNED	PRD
CHECKED	WAT
DRAWN	RTG/PRD
CHECKED	ASP

SHEET NO. 11 OF 22 SHEETS	F.A.P. RTE.	SECTION	COUNTY	TOTAL SHEETS	SHEET NO.
	742	34BR-1	WINNEBAGO	78	46
CONTRACT NO. 64E60					
FED. ROAD DIST. NO. 2 ILLINOIS FED. AID PROJECT					

DLZ 85 W. Algonquin Rd. Ste. 220
Arlington Heights IL 60005
DLZ Illinois, Inc.