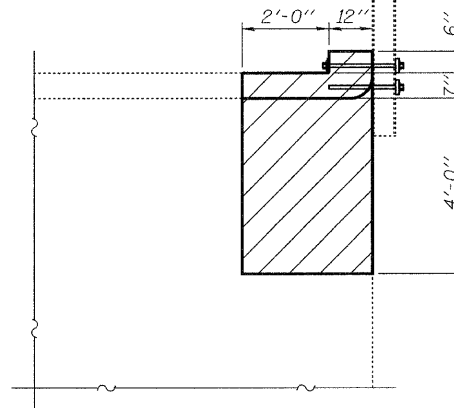


STATE OF ILLINOIS  
DEPARTMENT OF TRANSPORTATION

Existing rail posts to be reattached to new headwall. Cost included with Concrete Box Culverts

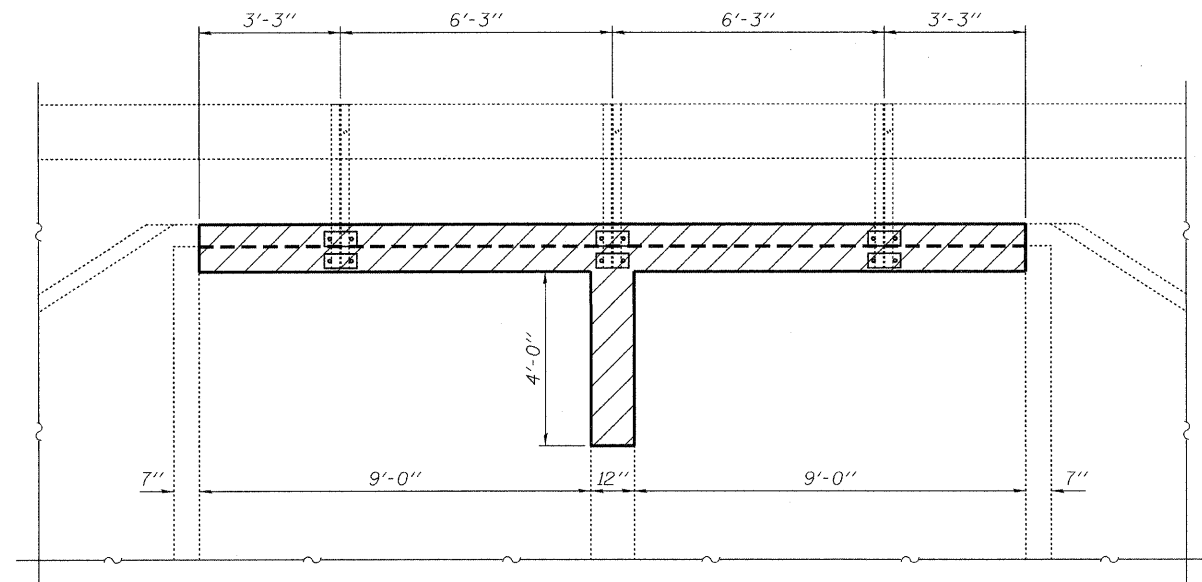


PARTIAL ELEVATION

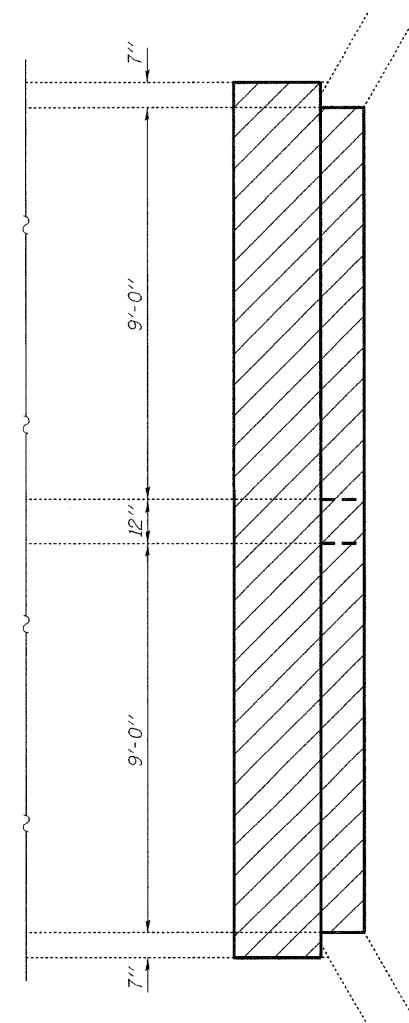
**GENERAL NOTES**

Reinforcement bars shall conform to the requirements of ASTM A 706 Gr 60. See Special Provisions.  
Reinforcement bars designated (E) shall be epoxy coated.  
Plan dimensions and details relative to existing plans are subject to nominal construction variations. The Contractor shall field verify existing dimensions and details affecting new construction and make necessary approved adjustments prior to construction or ordering of materials. Such variations shall not be cause for additional compensation for a change in scope of the work, however, the Contractor will be paid for the quantity actually furnished at the unit price bid for the work.  
Existing reinforcement bars extending into the removal area shall be cleaned, straightened and incorporated into the new construction. Any reinforcement bars that are damaged during concrete removal shall be replaced with an approved bar splicer or anchorage system. Cost included with Concrete Removal.

Hatched areas indicate concrete removal & replacement



PARTIAL END ELEVATION  
Looking South



PARTIAL PLAN



**TOTAL BILL OF MATERIAL**

ITEM	UNIT	TOTAL
Concrete Removal	Cu. Yd.	2.1
Concrete Box Culverts	Cu. Yd.	2.1
Reinforcement Bars Epoxy Coated	Pound	230

**DESIGN STRESSES**

FIELD UNITS  
f'c = 3,500 psi  
fy = 60,000 psi (Reinforcement)

**CULVERT REPAIRS  
IL 75 OVER DRAINAGE DITCH  
SN 101-1036**

DESIGNED	Victor H. Veliz
CHECKED	Rain Bolin
DRAWN	Kyle M. Steffen
CHECKED	VHV

NOVEMBER 18, 2009
EXAMINED
PASSED



EXPIRES 11-30-2010

SHEET NO. 1	US RTE.	SECTION	COUNTY	TOTAL SHEETS	SHEET NO.
	75	115 RS-2	WINNEBAGO	120	53
2 SHEETS	CONTRACT NO. 64E89				
FED. ROAD DIST. NO.		ILLINOIS FED. AID PROJECT			