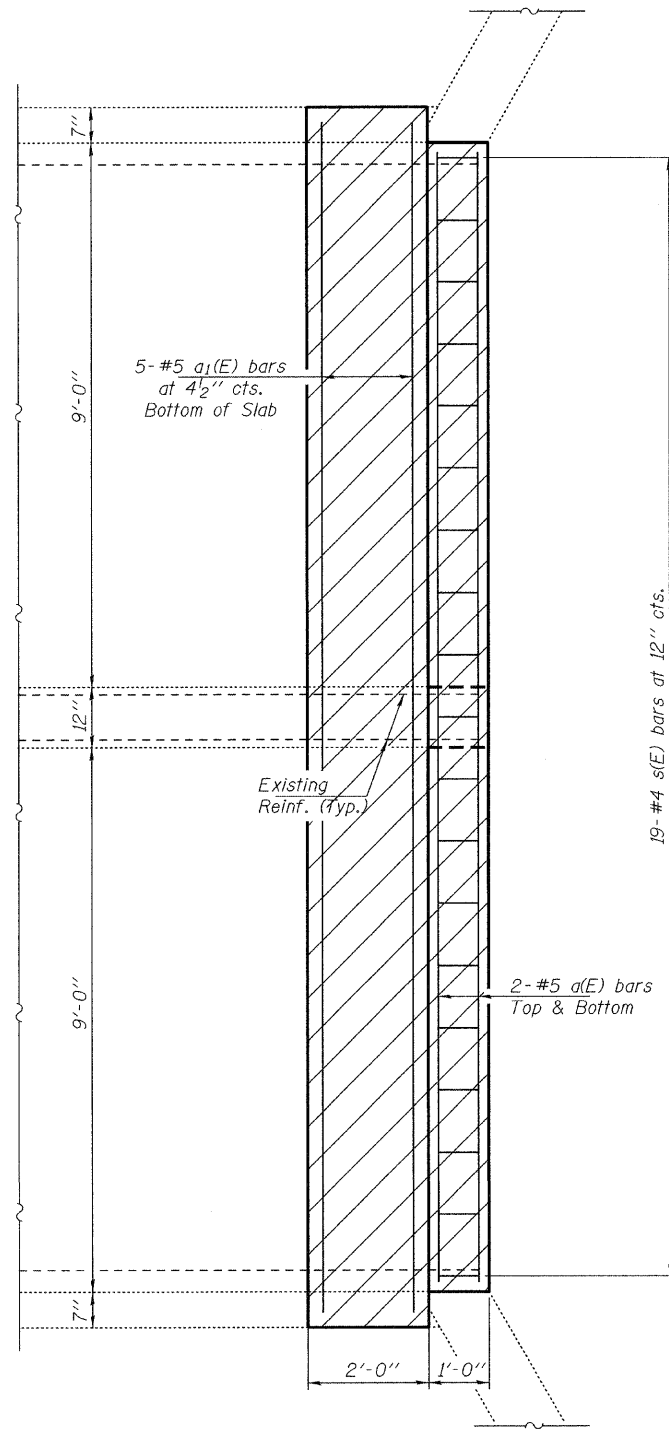
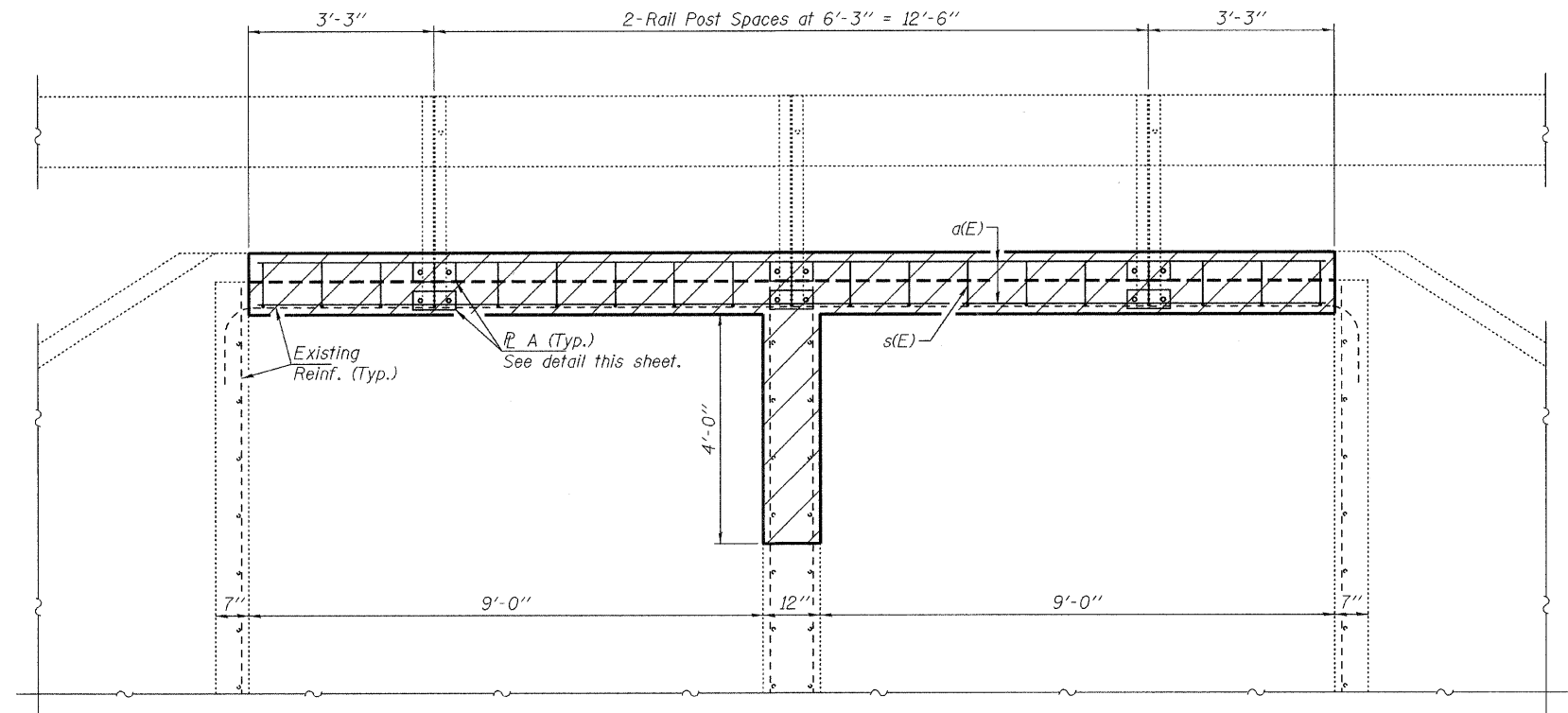


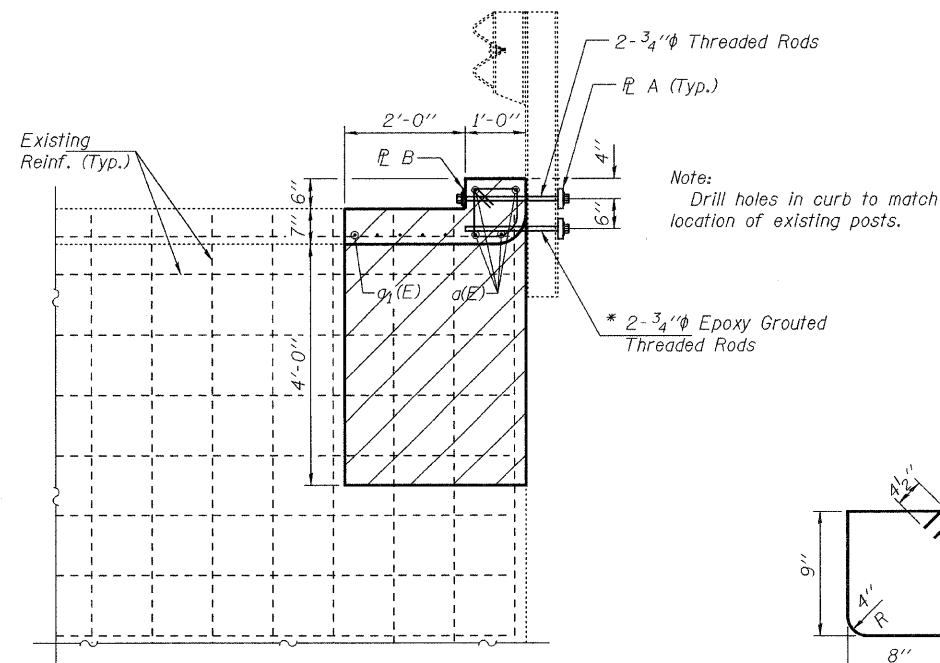
STATE OF ILLINOIS
DEPARTMENT OF TRANSPORTATION



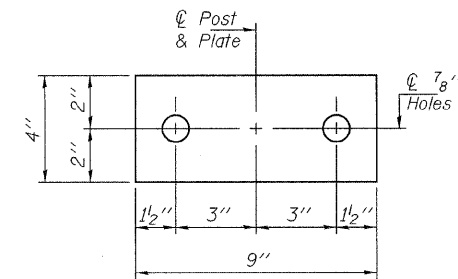
PARTIAL PLAN



PARTIAL END ELEVATION
Looking South

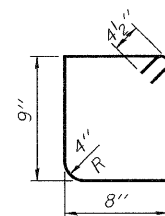


PARTIAL ELEVATION

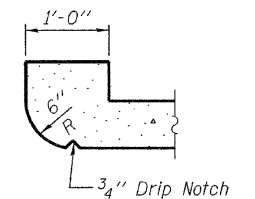


R A & B DETAILS

R A 1" x 4" x 9" (6 Req'd)
R B 1/2" x 4" x 9" (3 Req'd)



BAR s(E)



SECTION THRU HEADWALL

BILL OF MATERIAL

Bar	No.	Size	Length	Shape
a(E)	4	#5	18'-8"	—
a1(E)	5	#5	19'-10"	—
s(E)	19	#4	3'-7"	□
Concrete Removal			Cu. Yd.	2.1
Concrete Box Culverts			Cu. Yd.	2.1
Reinforcement Bars Epoxy Coated			Pound	230

**CULVERT REPAIRS
IL 75 OVER DRAINAGE DITCH
SN 101-1036**

DESIGNED	VHV
CHECKED	DAB
DRAWN	Kyle M. Steffen
CHECKED	VHV DAB

NOVEMBER 18, 2009
EXAMINED *A. Carl Powers*
ENGINEER OF STRUCTURAL SERVICES
PASSED *Ralph E. Anderson*
ENGINEER OF BRIDGES AND STRUCTURES

SHEET NO. 2 2 SHEETS	US RTE.	SECTION	COUNTY	TOTAL SHEETS	SHEET NO.
	75	115 RS-2	WINNEBAGO	120	54
FED. ROAD DIST. NO.			ILLINOIS	FED. AID PROJECT	
				CONTRACT NO. 64E89	