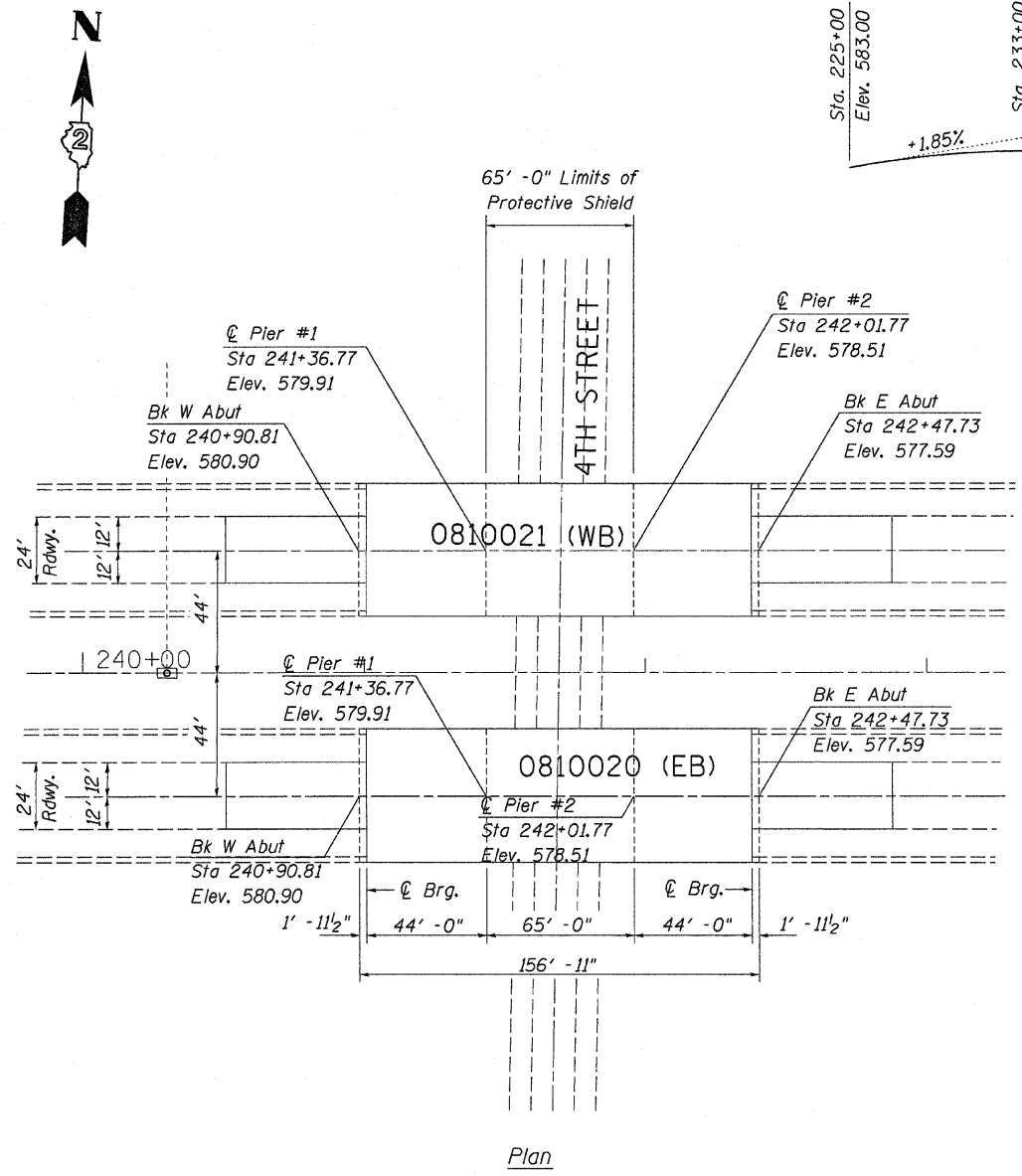
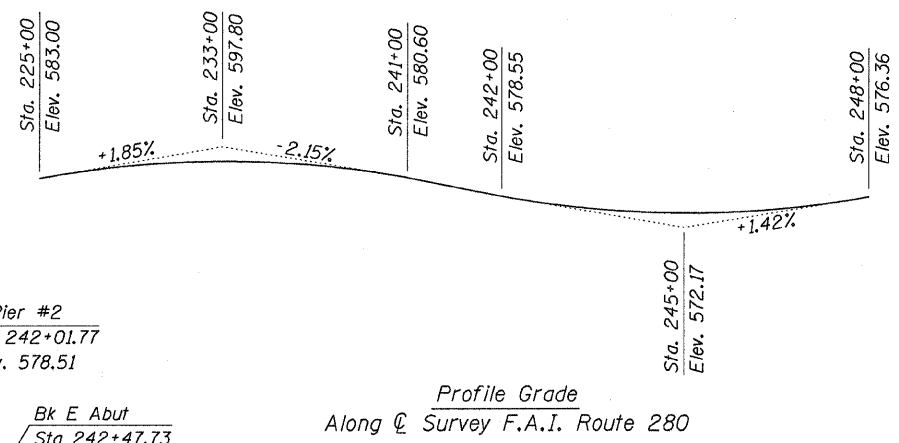
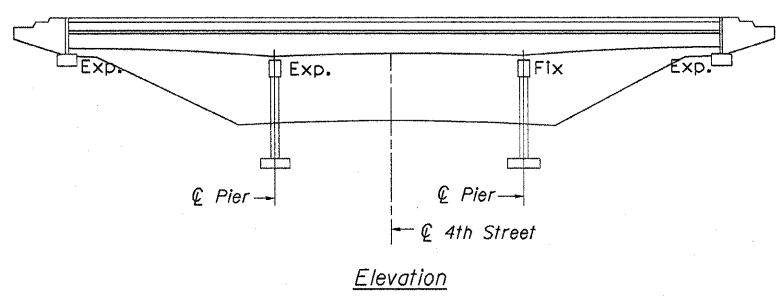


GENERAL NOTES

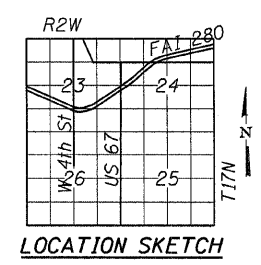
Plan dimensions and details relative to existing plans are subject to nominal construction variations. The Contractor shall field verify existing dimensions and details affecting new construction and make necessary approved adjustments prior to construction or ordering of materials. Such variations shall not be cause for additional compensation for a change in scope of the work, however, the Contractor will be paid for the quantity actually furnished at the unit price bid for the work

Existing reinforcement if exposed shall be cleaned and incorporated into the new construction. Cost included with Deck Slab Repair.



TOTAL BILL OF MATERIAL

ITEM	SQ YD	QTY
PROTECTIVE SHIELD	SQ YD	356
DECK SLAB REPAIR (FULL DEPTH)	SQ YD	64
DECK SLAB REPAIR (PARTIAL)	SQ YD	287



GENERAL PLAN & ELEVATION
 I-280 OVER WEST 4th STREET
 FAI ROUTE 280 SECTION D2 BR WEAR SURF I-280
 STA. 241+69.27
 ROCK ISLAND COUNTY
 STRUCTURE NUMBER 081-0020 (E.B.)
 STRUCTURE NUMBER 081-0021 (W.B.)

FILE NAME =	USER NAME = lirkdj	DESIGNED -	REVISED -	STATE OF ILLINOIS DEPARTMENT OF TRANSPORTATION	GENERAL PLAN & ELEVATION 081-0020 & 081-0021	F.A.I. RTE.	SECTION	COUNTY	TOTAL SHEETS	SHEET NO.	
D:\BR\CADD\plans\Rock Island County\2010	280 deck repair\PLANeng.dgn	DRAWN -	REVISED -			280	*	ROCK ISLAND	19	8	
	PLOT SCALE = 58.0000' / IN.	CHECKED -	REVISED -			CONTRACT NO. 64F92					
	PLOT DATE = Thu Nov 05 11:02:04 2009	DATE -	REVISED -			ILLINOIS FED. AID PROJECT					