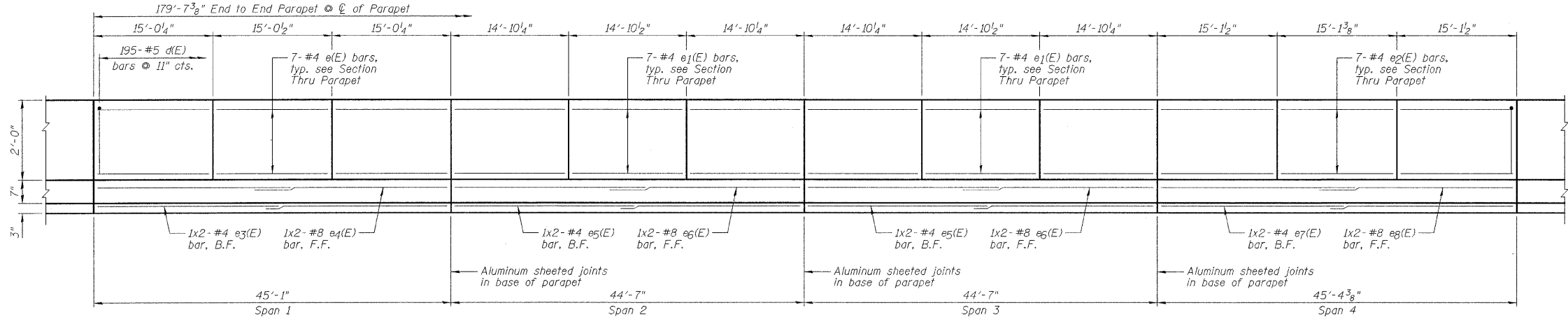


STATE OF ILLINOIS
DEPARTMENT OF TRANSPORTATION

SUPERSTRUCTURE
BILL OF MATERIAL

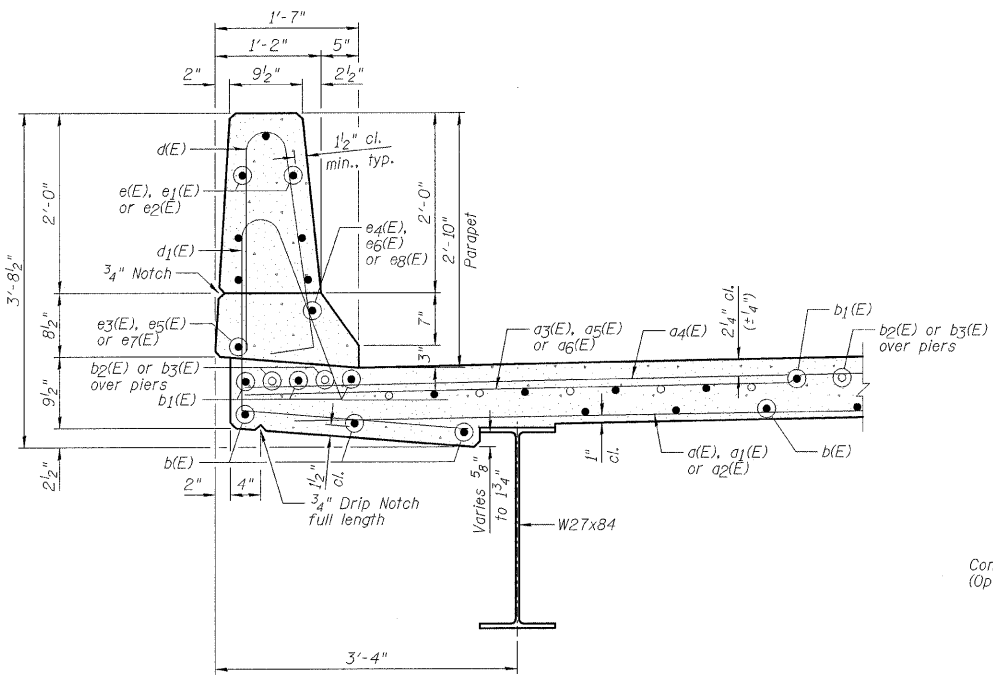
Bar	No.	Size	Length	Shape
a(E)	422	#5	19'-1"	—
a1(E)	4	#5	21'-9"	—
a2(E)	4	#5	20'-9"	—
a3(E)	704	#5	19'-1"	—
a4(E)	704	#6	6'-0"	—
a5(E)	6	#5	21'-10"	—
a6(E)	6	#5	22'-8"	—
b(E)	288	#5	23'-11"	—
b1(E)	294	#5	27'-1"	—
b2(E)	80	#6	30'-0"	—
b3(E)	40	#6	27'-0"	—
d(E)	390	#5	5'-7"	⊥
d1(E)	392	#5	8'-2"	⊥
e(E)	42	#4	14'-8"	—
e1(E)	84	#4	14'-6"	—
e2(E)	42	#4	14'-9"	—
e3(E)	4	#4	23'-3"	—
e4(E)	4	#8	24'-8"	—
e5(E)	8	#4	23'-0"	—
e6(E)	8	#8	24'-5"	—
e7(E)	4	#4	23'-4"	—
e8(E)	4	#8	24'-9"	—
m20(E)	32	#6	19'-5"	—
m21(E)	16	#6	6'-3"	—
m22(E)	16	#6	2'-11"	—
m23(E)	24	#6	8'-4"	—
s20(E)	72	#5	8'-0"	⊥
s21(E)	88	#5	6'-9"	⊥
u20(E)	80	#4	2'-9"	⊥
v20(E)	80	#4	3'-4"	⊥
Item	Unit	Quantity		
Concrete Superstructure	Cu. Yd.	242.0		
Bridge Deck Grooving	Sq. Yd.	678		
Protective Coat	Sq. Yd.	870		
Reinforcement Bars, Epoxy Coated	Pound	61,470		
Bar Splicers	Each	676		



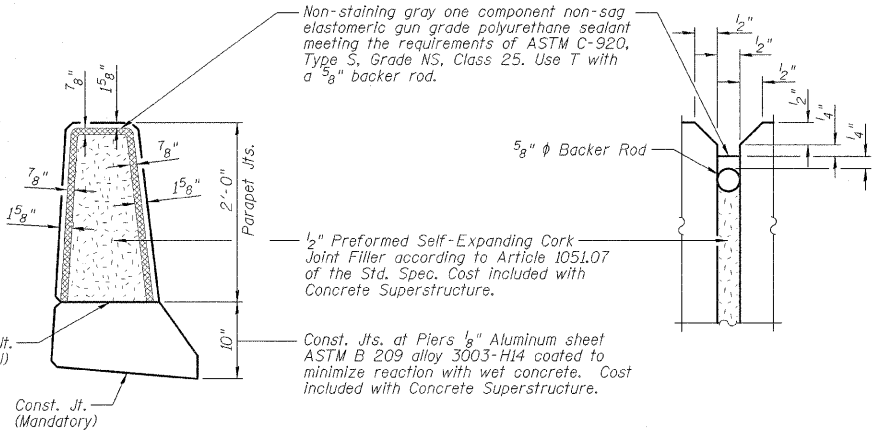
INSIDE ELEVATION OF PARAPET

BAR LAP

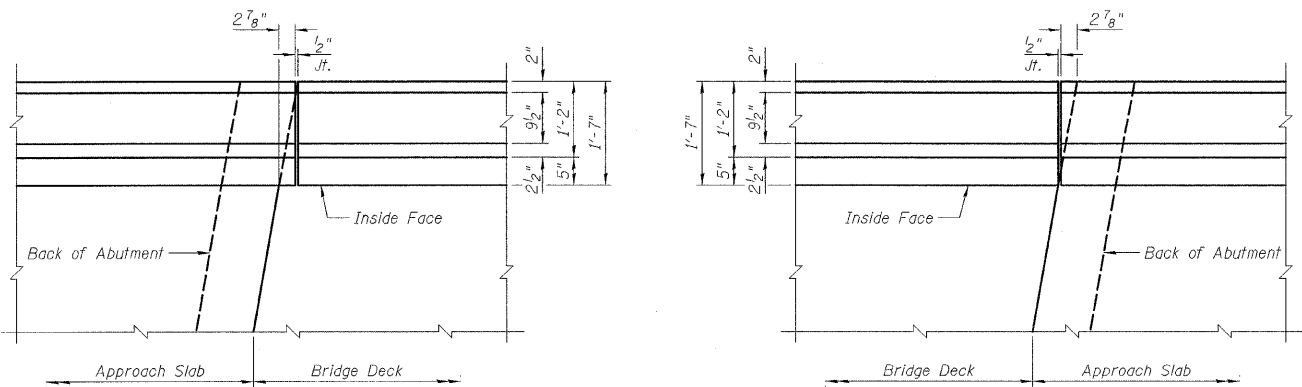
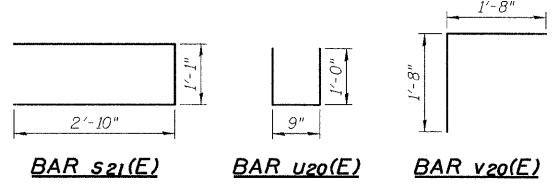
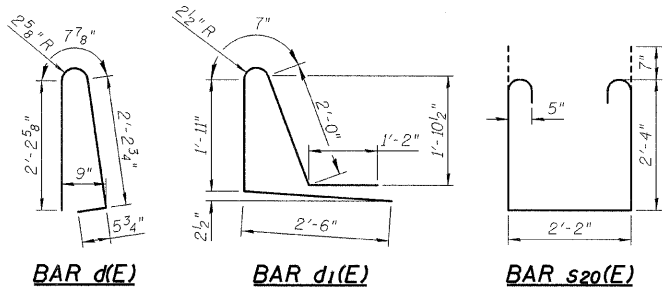
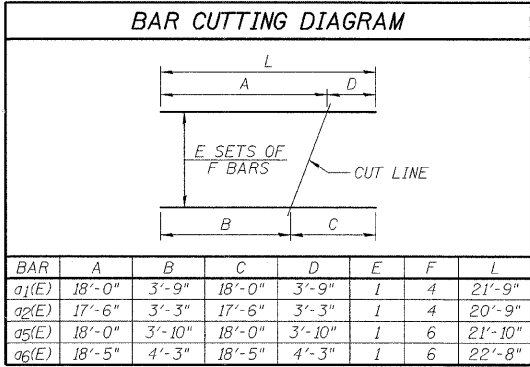
#4	-	1'-8"
#8	-	4'-6"



SECTION THRU PARAPET



PARAPET JOINT DETAILS



DETAIL A

DETAIL B

- NOTES:
- 1.) B.F. denotes Back Face and F.F. denotes Front Face.
 - 2.) Inside Elevation of Parapet view is exaggerated vertically to show reinforcement.
 - 3.) Bars indicated thus 1x2-#4 etc. indicates 1 line of bars with 2 lengths per line.
 - 4.) For location of Detail A and Detail B, see Sheet B10.

SUPERSTRUCTURE DETAILS
STRUCTURE NO. 053-0150

SHEET NO. B12	F.A.P. RTE.	SECTION	COUNTY	TOTAL SHEETS	SHEET NO.
34 SHEETS	41	15BR-2	LIVINGSTON	64	28
FED. ROAD DIST. NO.		ILLINOIS	FED. AID PROJECT		

DESIGNED SDH
CHECKED JML
DRAWN JMK/DJM
CHECKED MSW

DATE 10/07/09

FARNSWORTH GROUP, INC.

CONSULTING ENGINEERS - 2709 MCGRAW DRIVE BLOOMINGTON, ILLINOIS 61704 (309) 663-8435 / (309) 663-1571 FAX

24-8168