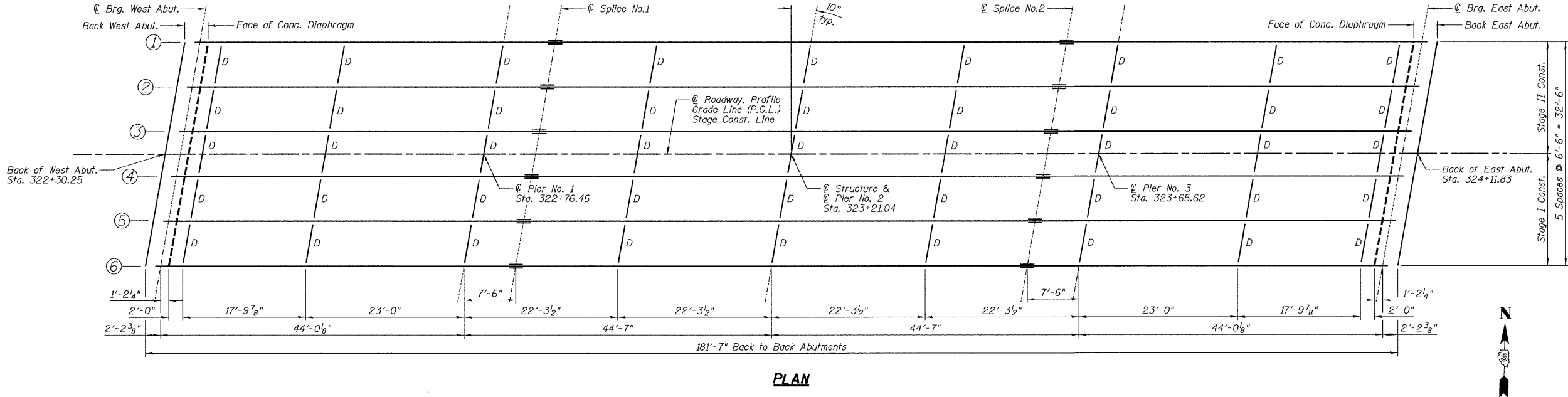
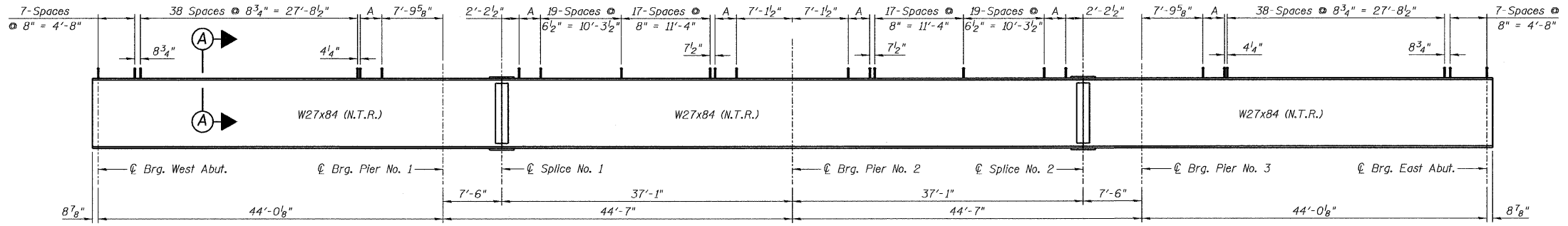


**STATE OF ILLINOIS
DEPARTMENT OF TRANSPORTATION**

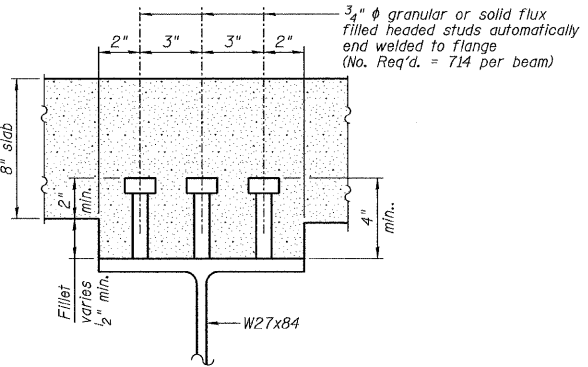


PLAN



ELEVATION

A = 11 spaces @ 3" = 2'-9"



SECTION A-A

FABRICATED TOP OF BEAM ELEVATION TABLE

Location	Beam No. 1	Beam No. 2	Beam No. 3	Beam No. 4	Beam No. 5	Beam No. 6
⊘ Brg. W. Abut.	615.50	615.62	615.71	615.70	615.59	615.46
⊘ Pier No. 1	615.64	615.76	615.86	615.85	615.74	615.63
⊘ Splice No. 1	615.66	615.78	615.88	615.88	615.77	615.66
⊘ Pier No. 2	615.66	615.78	615.88	615.88	615.77	615.66
⊘ Splice No. 2	615.65	615.77	615.88	615.88	615.78	615.66
⊘ Pier No. 3	615.62	615.74	615.85	615.86	615.76	615.64
⊘ Brg. E. Abut.	615.46	615.59	615.70	615.71	615.62	615.50

For fabrication use only.

NOTES:

- 1.) See Sheet B18 for Splice Details and Diaphragm Details.
- 2.) Load carrying components designated N.T.R. shall conform to the Supplemental Requirements for Notch Toughness, Zone 2.
- 3.) All diaphragms shall be installed as steel is erected and secured with erection pins and bolts except as otherwise noted. Individual diaphragms at supports may be temporarily disconnected to install bearing anchor rods.

DESIGNED	SDH
CHECKED	JML
DRAWN	JWK/DJM
CHECKED	MSW

DATE 10/07/09

FARNSWORTH GROUP, INC.

CONSULTING ENGINEERS - 2709 MCGRAW DRIVE BLOOMINGTON, ILLINOIS 61704 (309) 663-8435 / (309) 663-1571 FAX

**STRUCTURAL STEEL
STRUCTURE NO. 053-0150**

SHEET NO. B17 34 SHEETS	F.A.P. RTE.	SECTION	COUNTY	TOTAL SHEETS	SHEET NO.
	41	15BR-2	LIVINGSTON	64	33
CONTRACT NO. 66691					
FED. ROAD DIST. NO.		ILLINOIS FED. AID PROJECT			