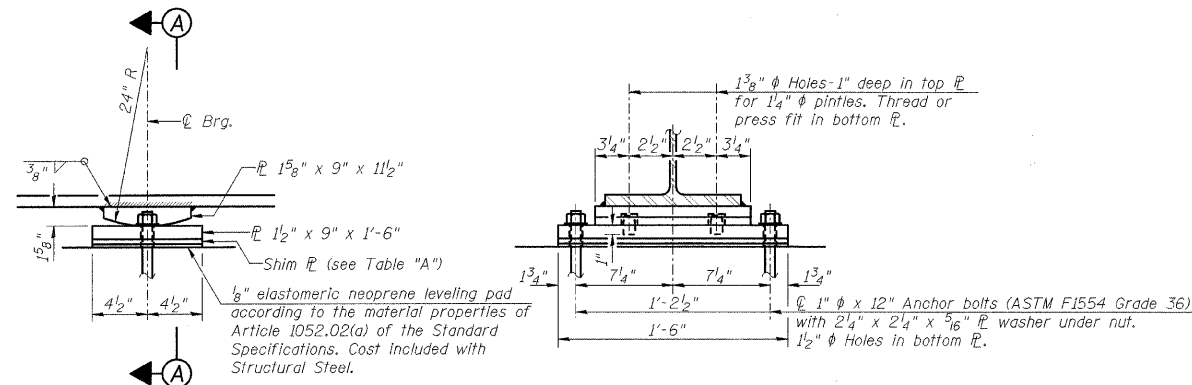


STATE OF ILLINOIS
DEPARTMENT OF TRANSPORTATION

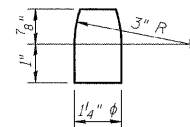


ELEVATION AT PIERS NO. 1 AND NO. 3

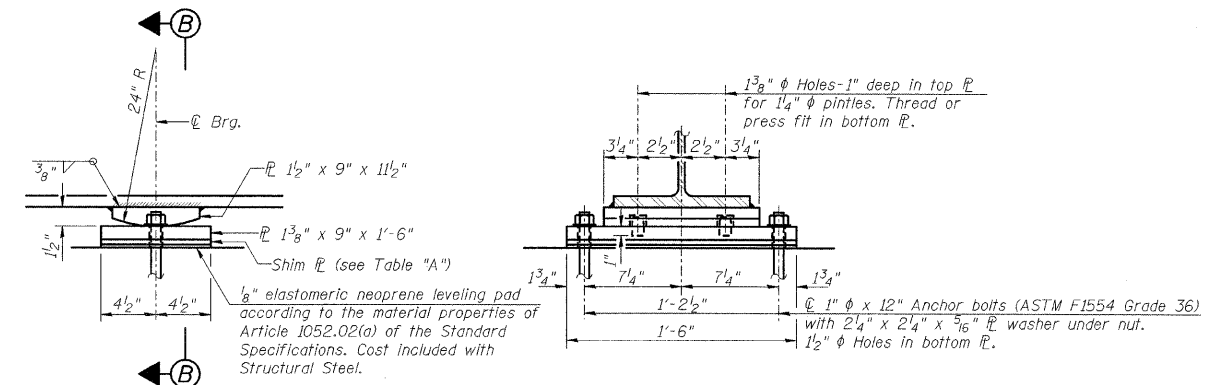
SECTION A-A

FIXED BEARING

(At Pier No. 1 - 6 Required)
(At Pier No. 3 - 6 Required)



PINTLE

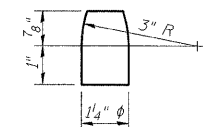


ELEVATION AT PIER NO. 2

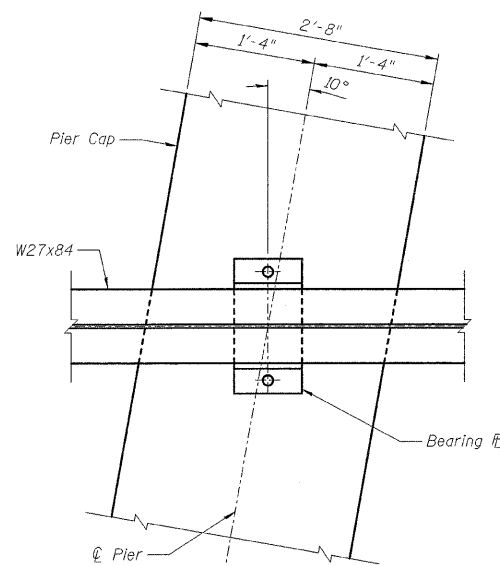
SECTION B-B

FIXED BEARING

(At Pier No. 2 - 6 Required)



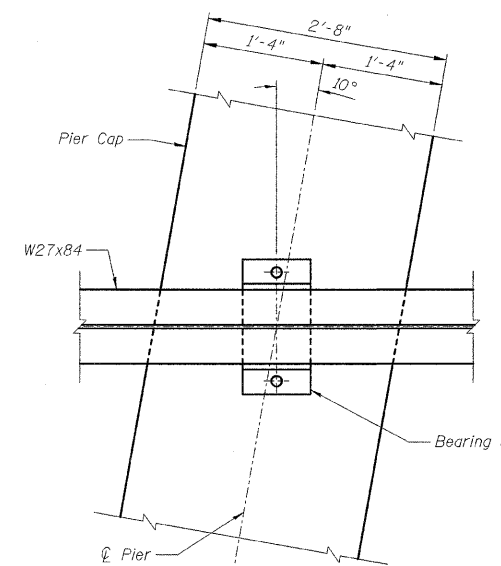
PINTLE



BEARING PLAN AT PIERS NO. 1 AND NO. 3

Notes:

Anchor bolts shall be ASTM F1554 all-thread (or an Engineer-approved alternate material) of the grade(s) and diameter(s) specified. ASTM A307 Grade C anchor bolts may be used in lieu of ASTM F1554 Grade 36 (Fy=36ksi). The corresponding specified grade of AASHTO M314 anchor bolts may be used in lieu of ASTM F1554.
Anchor bolts at fixed bearings may be either cast in place or installed in holes drilled after the supported member is in place.
Drilled and set anchor bolts shall be installed according to Article 521.06 of the Standard Specifications.



BEARING PLAN AT PIER NO. 2

TABLE "A"

Beam No.	Shim Thickness
Pier No. 1 - 3	1/8"
Pier No. 3 - 4	1/8"

BILL OF MATERIAL

Item	Unit	Total
Anchor Bolts, 1"	Each	36

NOTES:

- Two 1/8 in. adjusting shims shall be provided for each bearing in addition to all other plates or shims and placed as shown on bearing details.
- The structural steel plates of the bearing assembly shall conform to the requirements of AASHTO M 270 Grade 50W.

DESIGNED	SDH
CHECKED	JML
DRAWN	JWK/DJM
CHECKED	MSW

DATE 10/07/09

FARNSWORTH GROUP, INC.

CONSULTING ENGINEERS - 2709 MCGRAW DRIVE BLOOMINGTON, ILLINOIS 61704 (309) 663-8435 / (309) 663-1571 FAX

**FIXED BEARING DETAILS
STRUCTURE NO. 053-0150**

SHEET NO.	F.A.P. RTE.	SECTION	COUNTY	TOTAL SHEETS	SHEET NO.
B20	41	15BR-2	LIVINGSTON	64	36
34 SHEETS			CONTRACT NO. 66691		
FED. ROAD DIST. NO.		ILLINOIS	FED. AID PROJECT		

24-8168