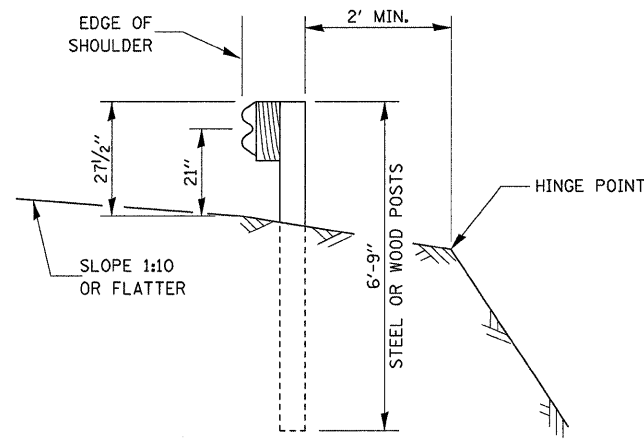


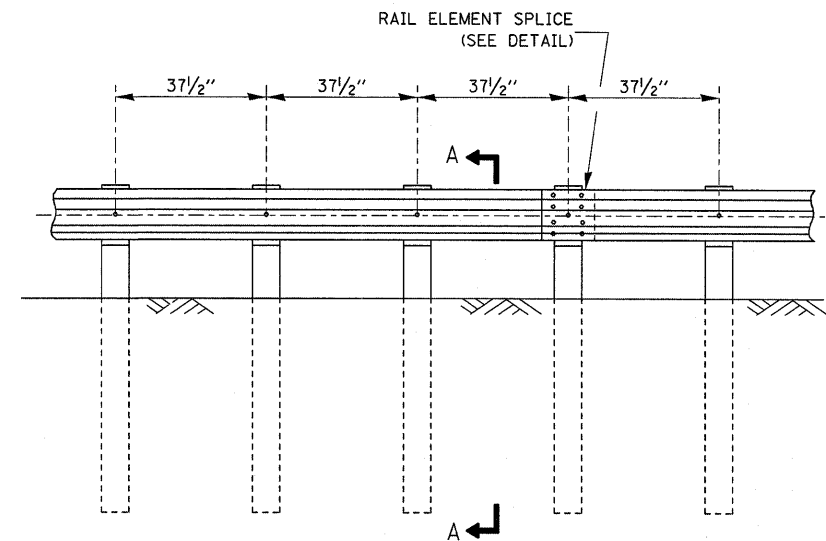
ELEVATION

TYPE A

6'-3" TYPICAL POST SPACING



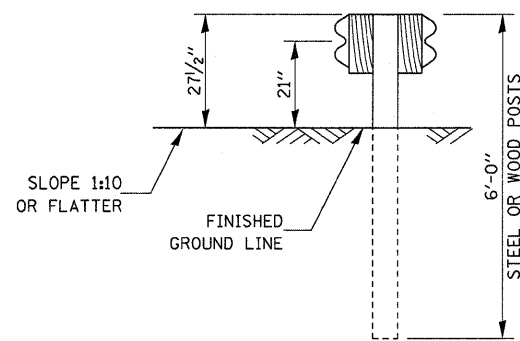
SECTION A-A



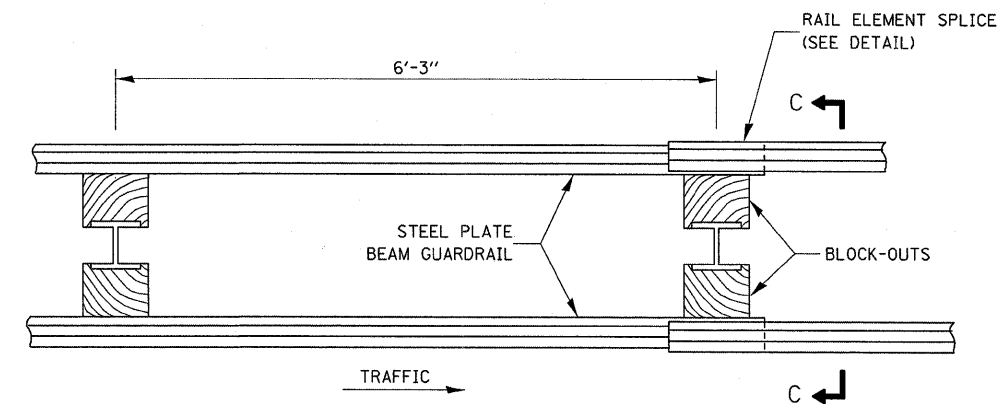
ELEVATION

TYPE B

37 1/2" CLOSED POST SPACING



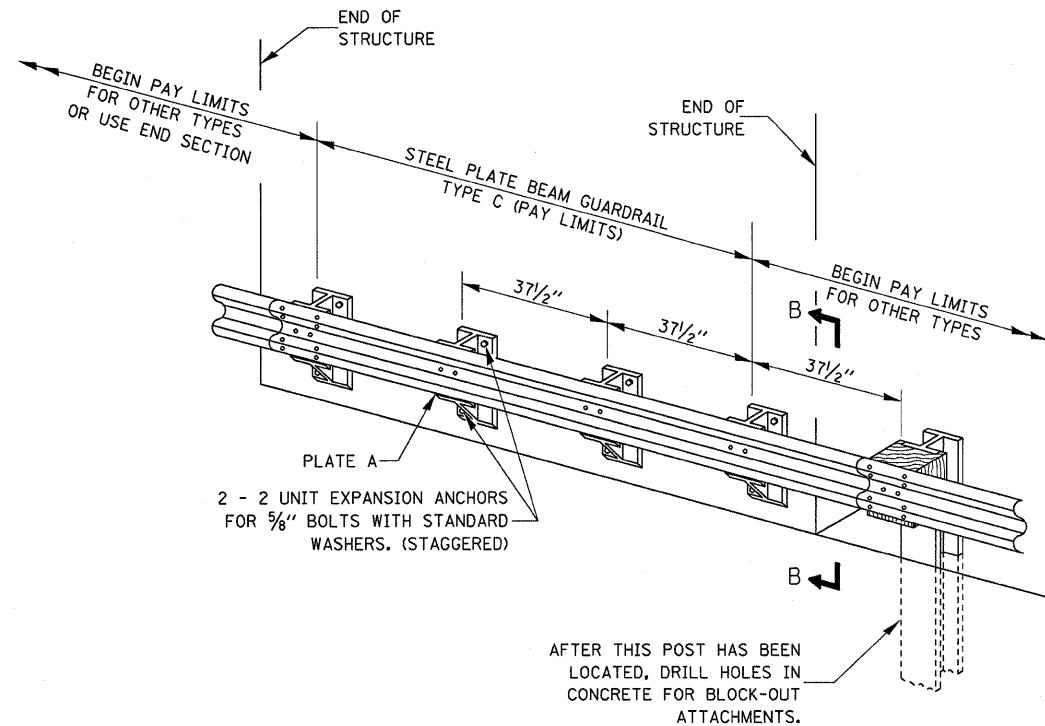
SECTION C-C



PLAN

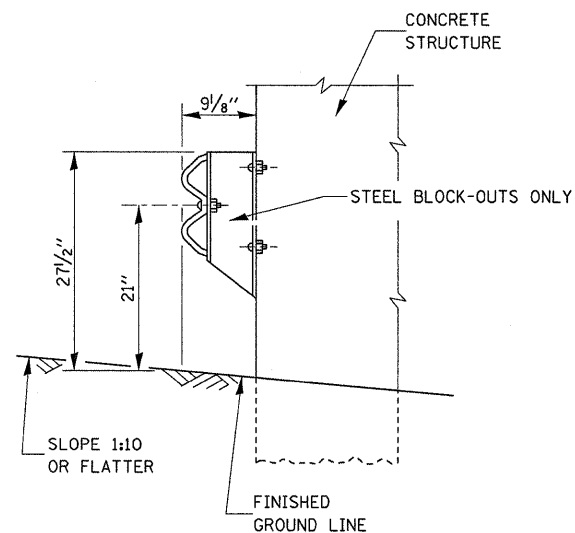
TYPE D

DOUBLE STEEL PLARE BEAM GUARDRAIL
6'-3" TYPICAL POST SPACING



TYPE C

37 1/2" BLOCK-OUT SPACING



SECTION B-B

GENERAL NOTES

- ALL SLOPE RATIOS ARE EXPRESSED AS UNITS OF VERTICAL DISPLACEMENT TO UNITS OF HORIZONTAL DISPLACEMENT (V:H).
- THE EXISTING STEEL POSTS MAY BE DRILLED TO MATCH THE BOLT PATTERN SHOWN HEREIN FOR THE WOOD BLOCK-OUTS, OR A NEW STEEL POST SHALL BE PROVIDED.
- THIS DETAIL IS APPLICABLE TO THE GUARDRAIL SYSTEM USED PRIOR TO JANUARY 1, 2007. FOR DETAILS ON THE MIDWEST GUARDRAIL SYSTEM SEE STANDARD 630001.

FILE NAME =	USER NAME = schwankeg	DESIGNED -	REVISED -	STATE OF ILLINOIS DEPARTMENT OF TRANSPORTATION	REMOVE AND REERECT STEEL PLATE BEAM GUARDRAIL	F.A.P. RTE.	SECTION	COUNTY	TOTAL SHEETS	SHEET NO.	
ci:\pw\work\p\dot\schwankeg\dms73146\deta1s.dgn		DRAWN -	REVISED -			41	15BR-2	LIVINGSTON	64	55	
PLOT SCALE = 50.0000' / IN.		CHECKED -	REVISED -			CONTRACT NO. 66691					
PLOT DATE = Oct 16, 2009 - 03:05:43 PM		DATE -	REVISED -			FED. ROAD DIST. NO. ILLINOIS FED. AID PROJECT					
						SCALE:	SHEET NO. 1 OF 4 SHEETS	STA.	TO STA.		