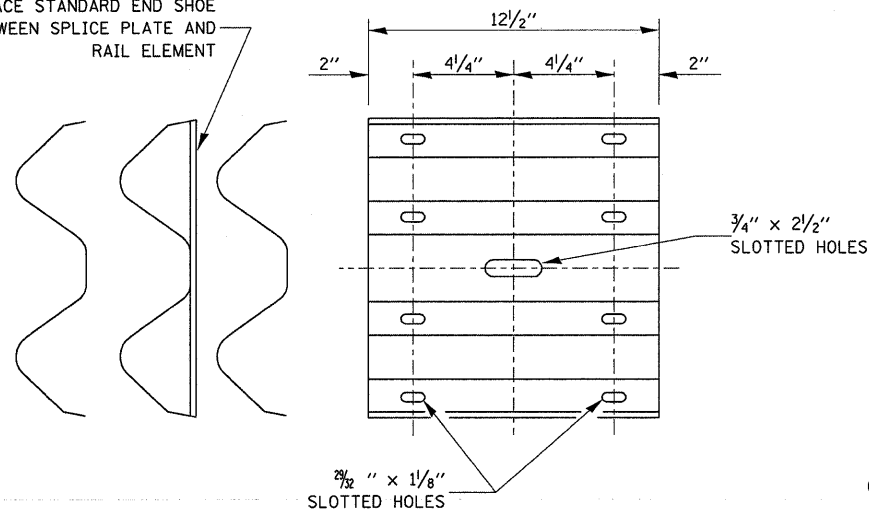
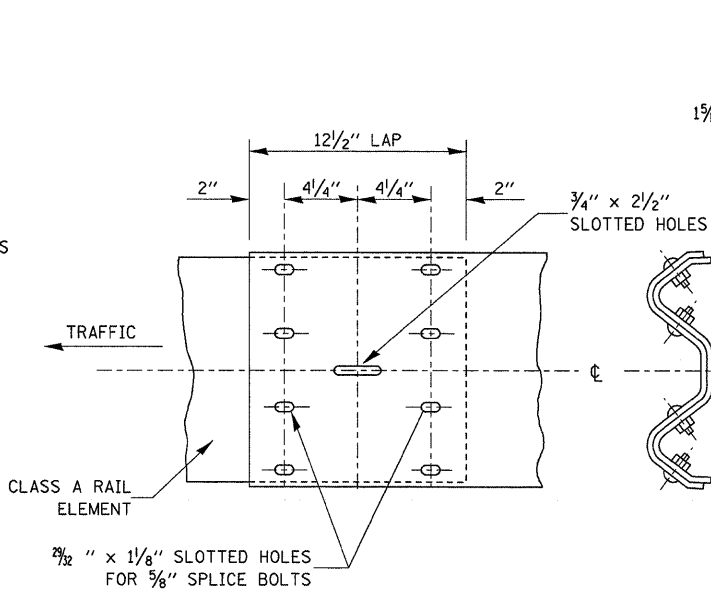


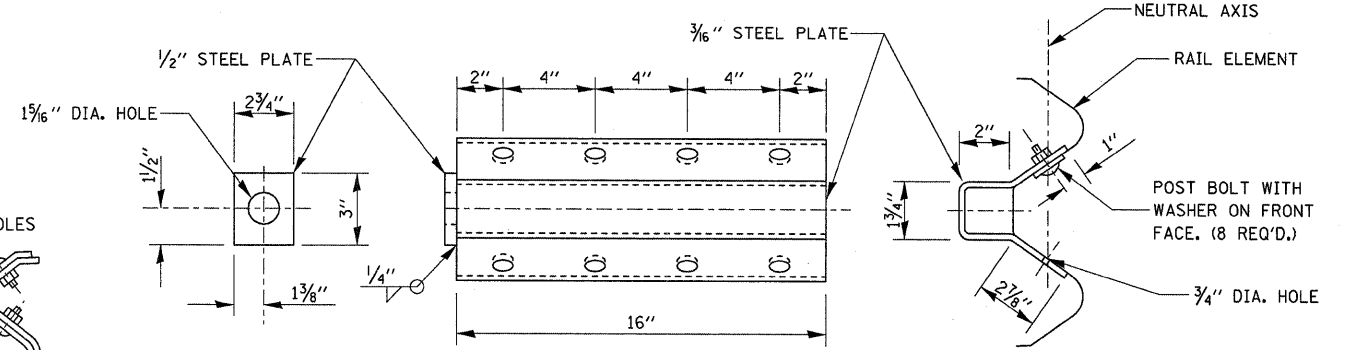
PLACE STANDARD END SHOE BETWEEN SPLICE PLATE AND RAIL ELEMENT



SPLICE PLATE

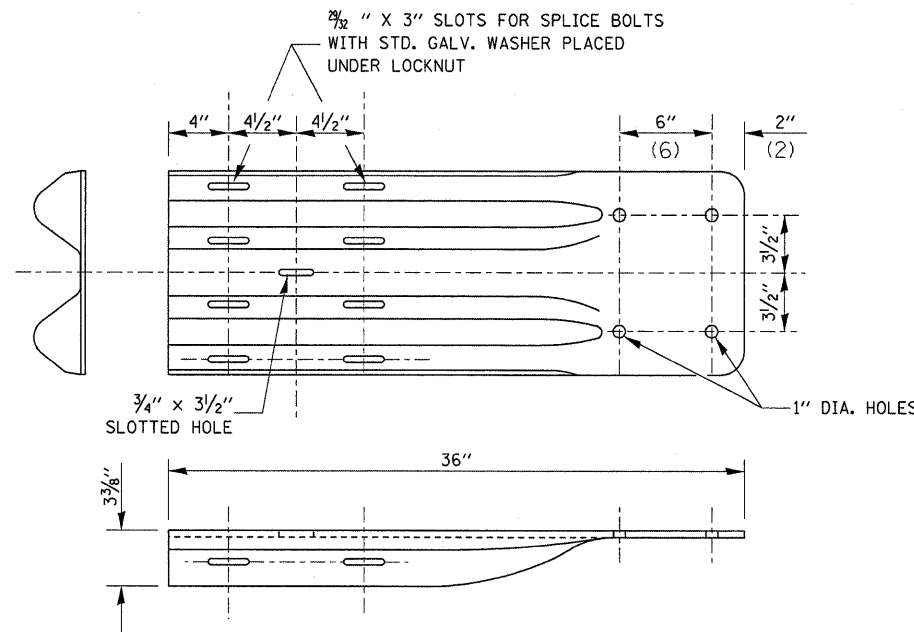
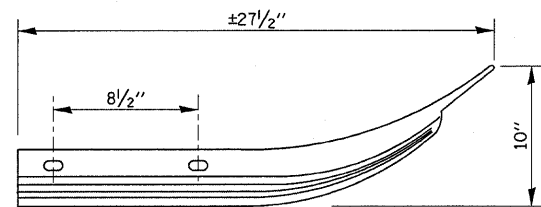


RAIL ELEMENT SPLICE



NOTE:
ANCHOR PLATE T SHALL BE USED TO ATTACH CABLE ASSEMBLY TO GUARDRAIL WHEN REQUIRED ON TRAFFIC BARRIER TERMINALS.

ANCHOR PLATE T DETAILS

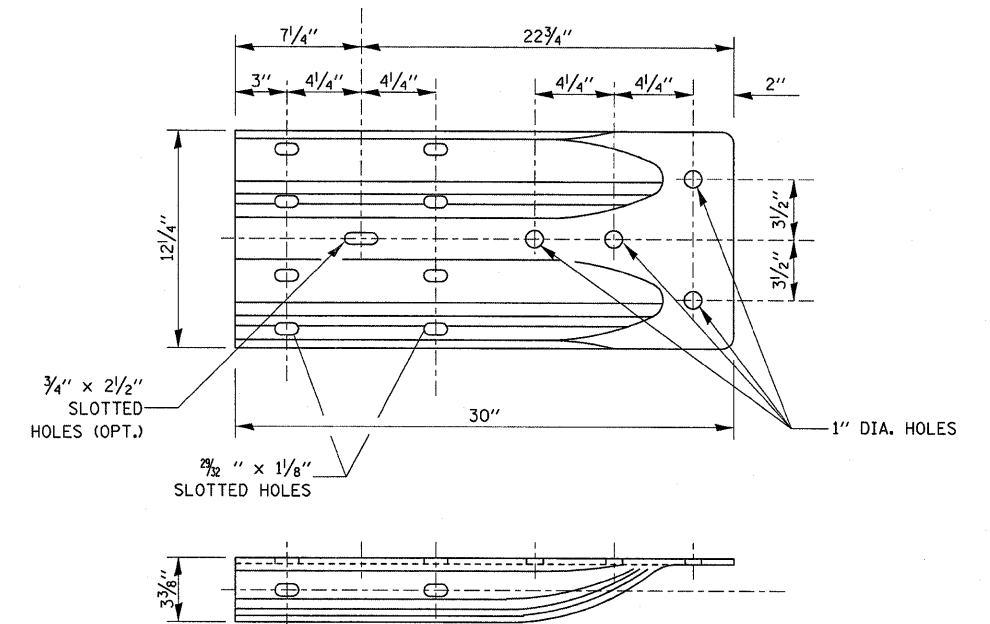


NOTE:
WHEN END SHOE IS ATTACHED TO A BRIDGE PARAPET WHICH HAS AN EXPANSION JOINT, THE BOLTS SHALL BE PROVIDED WITH A LOCKNUT OR DOUBLE NUT AND SHALL BE TIGHTENED ONLY TO A POINT THAT WILL ALLOW GUARDRAIL MOVEMENT.

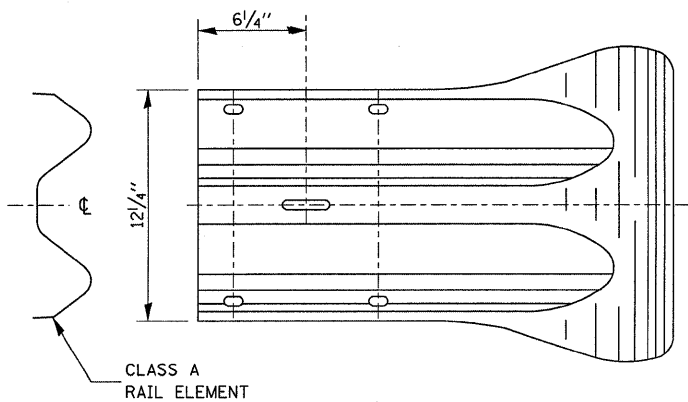
THE STANDARD END SHOE SHALL BE ATTACHED TO THE CONCRETE WITH PRE-DRILLED OR SELF-DRILLING ANCHOR BOLTS. THE ANCHOR CONE SHALL BE SET FLUSH WITH THE SURFACE OF THE CONCRETE.

EXTERNALLY THREADED STUDS PROTRUDING FROM THE SURFACE OF THE CONCRETE WILL NOT BE PERMITTED.

END SHOE



ALTERNATE END SHOE



END SECTION

FILE NAME =	USER NAME = schwankerg	DESIGNED -	REVISED -	STATE OF ILLINOIS DEPARTMENT OF TRANSPORTATION	REMOVE AND REERECT STEEL PLATE BEAM GUARDRAIL	F.A.P. RTE.	SECTION	COUNTY	TOTAL SHEETS	SHEET NO.	
ci:\pw\work\p1dot1\schwankerg\dms73146\d	tei1a.dgn	DRAWN -	REVISED -			41	15BR-2	LIVINGSTON	64	57	
		CHECKED -	REVISED -			CONTRACT NO. 66691					
		DATE -	REVISED -			FED. ROAD DIST. NO. ILLINOIS FED. AID PROJECT					
PLOT SCALE = 5/8" = 1' / IN.		PLOT DATE = Oct 16, 2009 - 03:00:36 PM		SCALE:	SHEET NO. 3 OF 4 SHEETS	STA.	TO STA.				