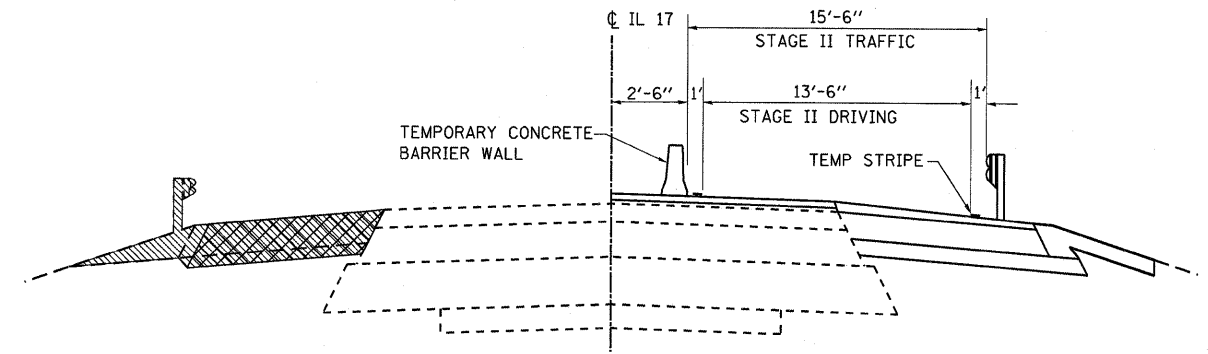
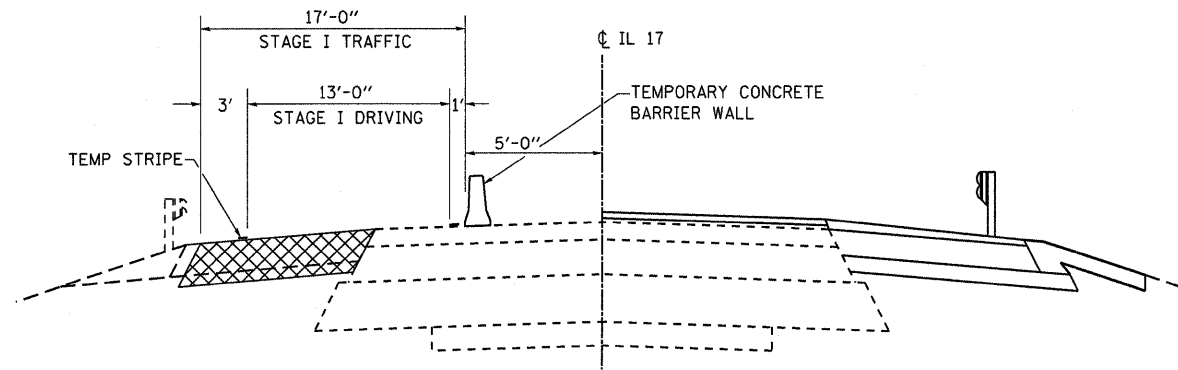


CONSTRUCT HMA BASE COURSE, 8" AND TEMPORARY PAVEMENT, 8" PRIOR TO STAGE I OPERATIONS. PORTIONS OF HMA BASE COURSE TO REMAIN AS PROPOSED SHOULDER (SEE NOTE 4 OF THE TYPICAL SECTIONS)

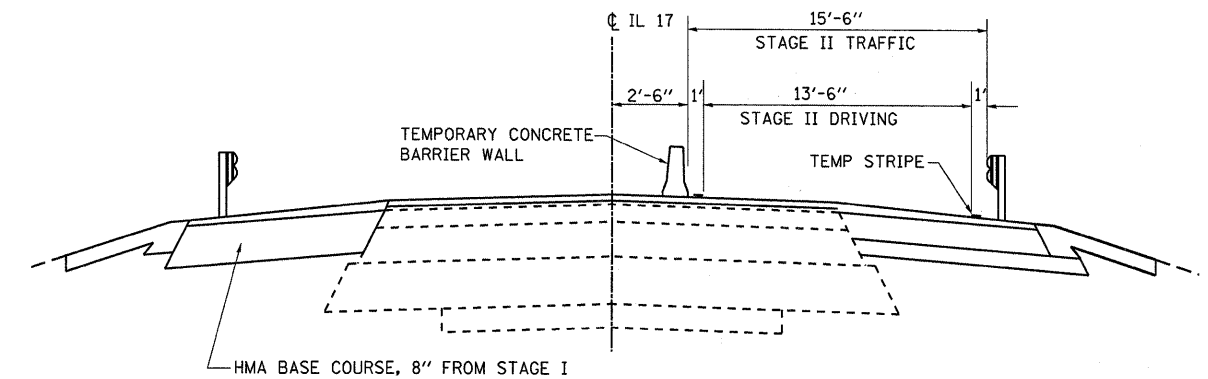
STAGE I REMOVAL
STA. 404+50 TO STA. 411+00



STAGE II REMOVAL
STA. 404+50 TO STA. 411+00



STAGE I CONSTRUCTION
STA. 404+50 TO STA. 411+00



STAGE II CONSTRUCTION
STA. 404+50 TO STA. 411+00

STAGE I CONSTRUCTION

1. INSTALL TRAFFIC CONTROL PER STANDARD 701326
2. CONSTRUCT HMA BASE COURSE & TEMPORARY PAVEMENT
3. INSTALL TRAFFIC CONTROL PER STANDARD 701321 AND AS DETAILED IN THESE PLANS
4. REMOVE EXISTING EASTBOUND GUARDRAIL
5. REMOVE EXISTING EASTBOUND PAVEMENT
6. REMOVE EASTBOUND PORTION OF EXISTING STRUCTURE
7. CONSTRUCT EASTBOUND PORTION OF STRUCTURE, BRIDGE APPROACH & RIPRAP
8. CONSTRUCT EASTBOUND SHOULDER & TEMPORARY PAVEMENT (FOR STAGE II)
9. PLACE HOT-MIX ASPHALT OVERLAY
10. INSTALL GUARDRAIL

STAGE II CONSTRUCTION

1. RELOCATE TRAFFIC CONTROL PER STANDARD 701321 AND AS DETAILED IN THESE PLANS
2. REMOVE TEMPORARY PAVEMENT AND PORTIONS OF HMA BASE COURSE (AS NECESSARY)
3. REMOVE EXISTING WESTBOUND PAVEMENT
4. REMOVE EXISTING GUARDRAIL
5. REMOVE WESTBOUND PORTION OF EXISTING STRUCTURE
6. CONSTRUCT WESTBOUND PORTION OF STRUCTURE, BRIDGE APPROACH & RIPRAP
7. CONSTRUCT WESTBOUND SHOULDER
8. PLACE HOT-MIX ASPHALT OVERLAY
9. INSTALL GUARDRAIL

STAGE III CONSTRUCTION

1. TRAFFIC CONTROL PER STANDARD 701201
2. ANY HMA OVERLAY NOT PLACED IN PREVIOUS STAGES
3. PLACE PERMANENT PAVEMENT MARKINGS ON EASTBOUND AND WESTBOUND LANES
4. LANDSCAPE RESTORATION

FILE NAME =	USER NAME = duncanbd	DESIGNED -	REVISED -
er:\pw\work\p\dot\duncanbd\dms32420\366833-sht-details.dgn		DRAWN -	REVISED -
		CHECKED -	REVISED -
		DATE -	REVISED -

STATE OF ILLINOIS
DEPARTMENT OF TRANSPORTATION

TRAFFIC CONTROL CONSTRUCTION STAGING
NOTES & DETAILS

SCALE: SHEET NO. OF SHEETS STA. TO STA.

F.A.P. RTE.	SECTION	COUNTY	TOTAL SHEETS	SHEET NO.
41	(15BR-3)-1	LIVINGSTON	45	10
CONTRACT NO. 66833				

ILLINOIS FED. AID PROJECT