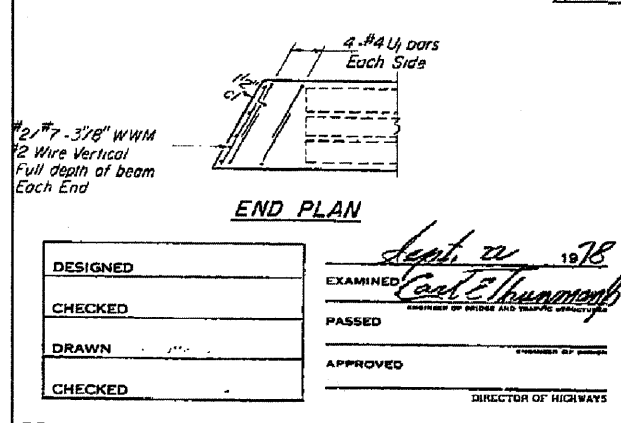
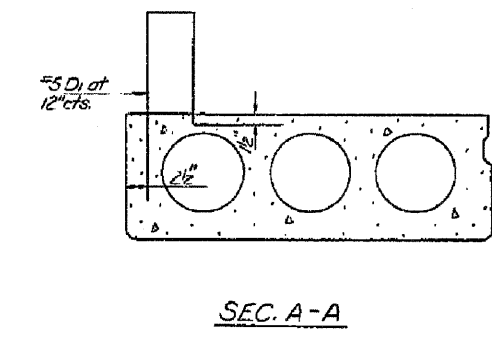
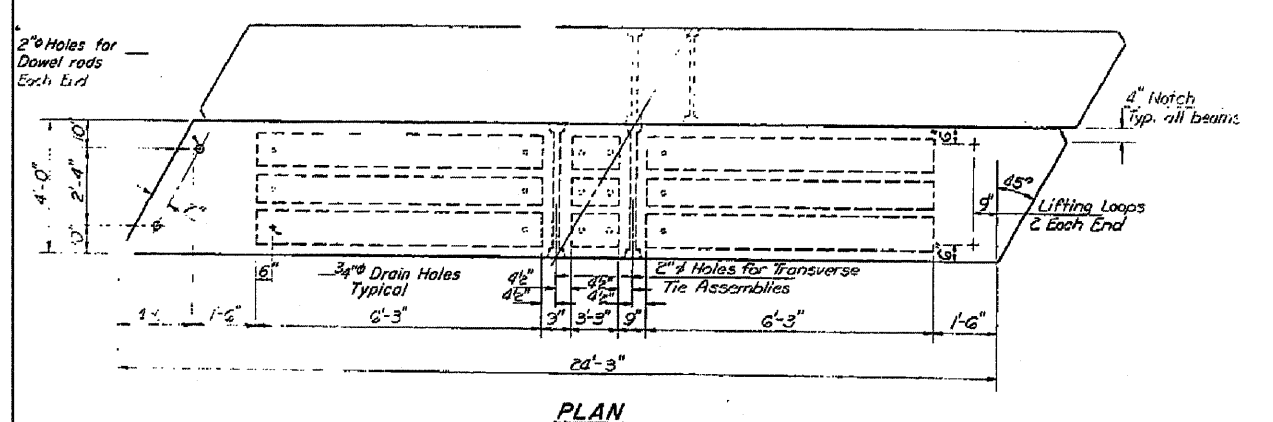
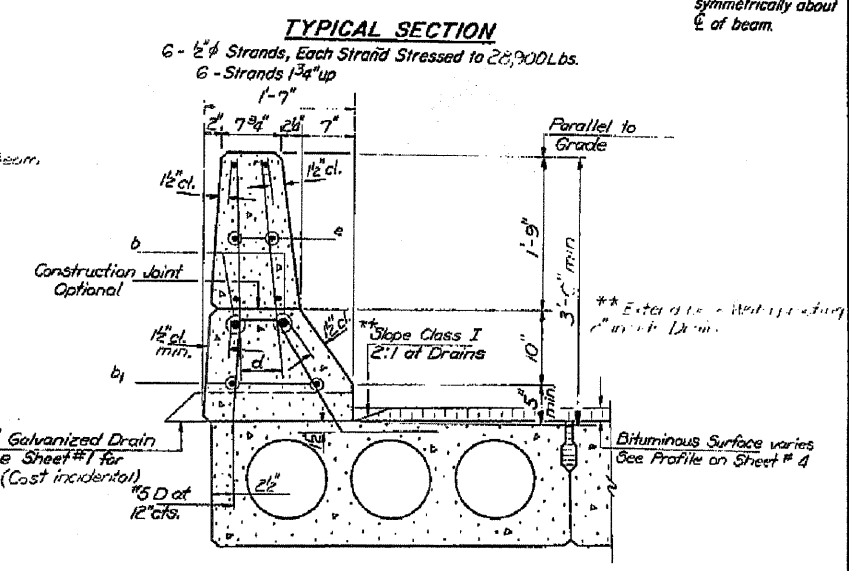
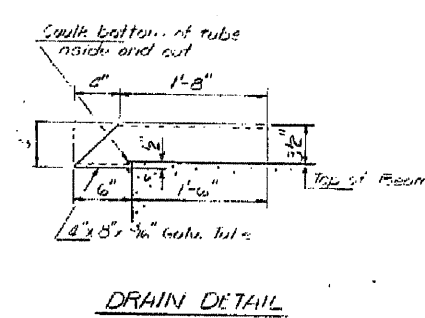
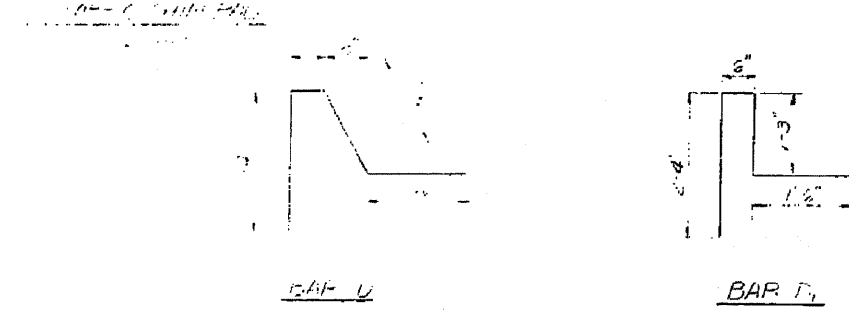
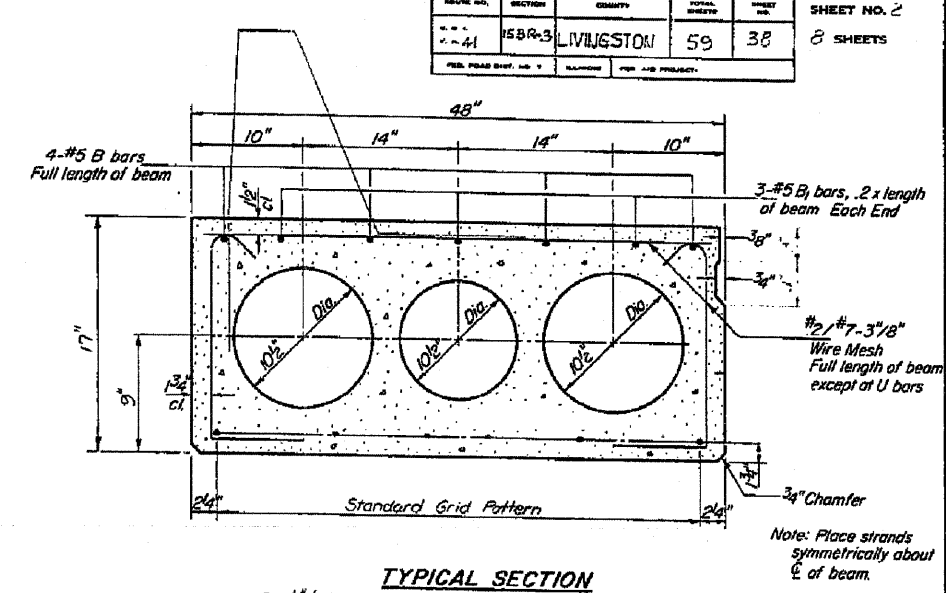
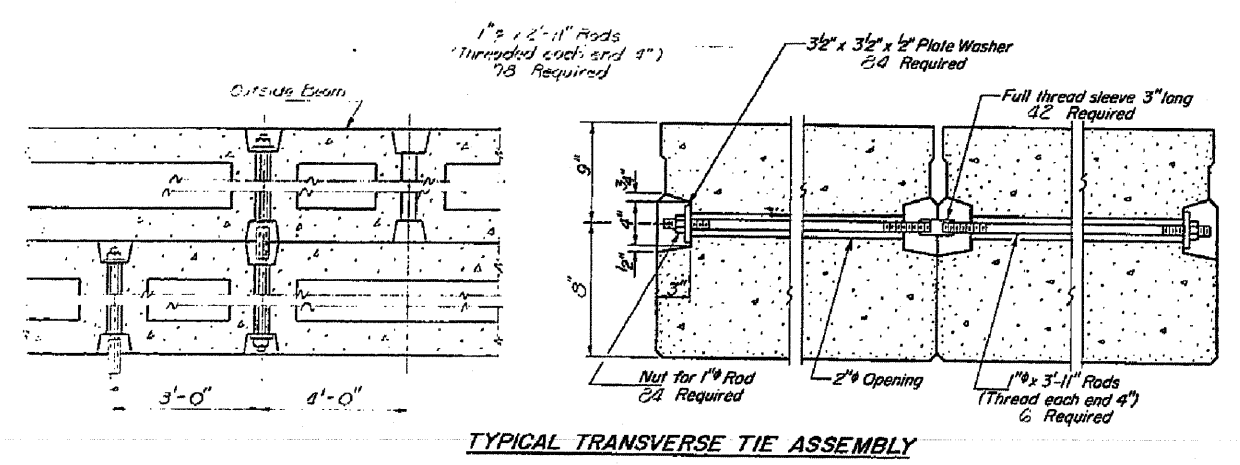
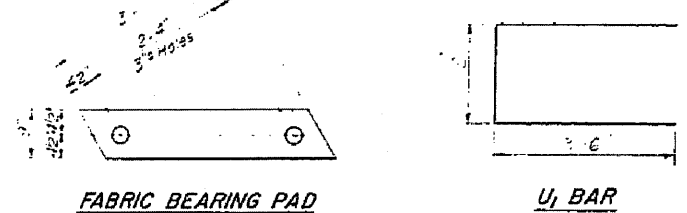


STATE OF ILLINOIS
DEPARTMENT OF TRANSPORTATION

PROJECT NO.	SECTION	COUNTY	TOTAL SHEETS	SHEET NO.	SHEET NO. 2
41	15BR-3	LIVINGSTON	59	38	8 SHEETS
ILLINOIS FED. AID PROJECT					



* After beams are in place, holes shall be drilled into the bridge seat and the anchors grouted in place.

Note: For details of parapet see sheet # 4. For location of Sec. A-A and B-B see sheet # 4.

NOTES

Prestressing steel shall be non-galvanized high strength, stress-relieved 7-wire strand, Grade 270. The nominal diameter shall be 1/2" and the nominal cross-sectional area shall be 0.153 sq. in. Lifting loops shall be 1/2" diameter, 6 x 25 class wire rope with fiber core and shall have a minimum ultimate tensile strength of 21,000 lbs. The 1" rods in the transverse tie assembly shall be tightened to a snug fit and the threads set. Pockets that receive transverse tie bar on outside shall be filled with grout after transverse tie assembly is in place. Longitudinal shear keys shall be packed with a very dry mix of 2-1 sand and P.C. mortar. After beams have been erected, holes for the dowel anchors shall be drilled into the sub-structure and the anchor dowels shall be grouted in place.

Cost of reinforcement and accessories cast into the beam, of bearing pads, of armor angles, and of grouting longitudinal shear keys is included in unit price bid for "Precast Prestressed Concrete Deck Beams."

SEC. B-B

SIX PARAPET BEAMS
BILL OF MATERIAL

Bar	No.	Size	Length	Shape
Precast Prestressed Concrete Deck Beams (17')		Sq. Ft.	562	

SUPERSTRUCTURE
F.A. RT. 41 SEC. 15 BR-3
LIVINGSTON COUNTY
STATION 407+84.00

DESIGNED	EXAMINED
CHECKED	PASSED
DRAWN	APPROVED
CHECKED	

10/18
10/18
DIRECTOR OF HIGHWAYS