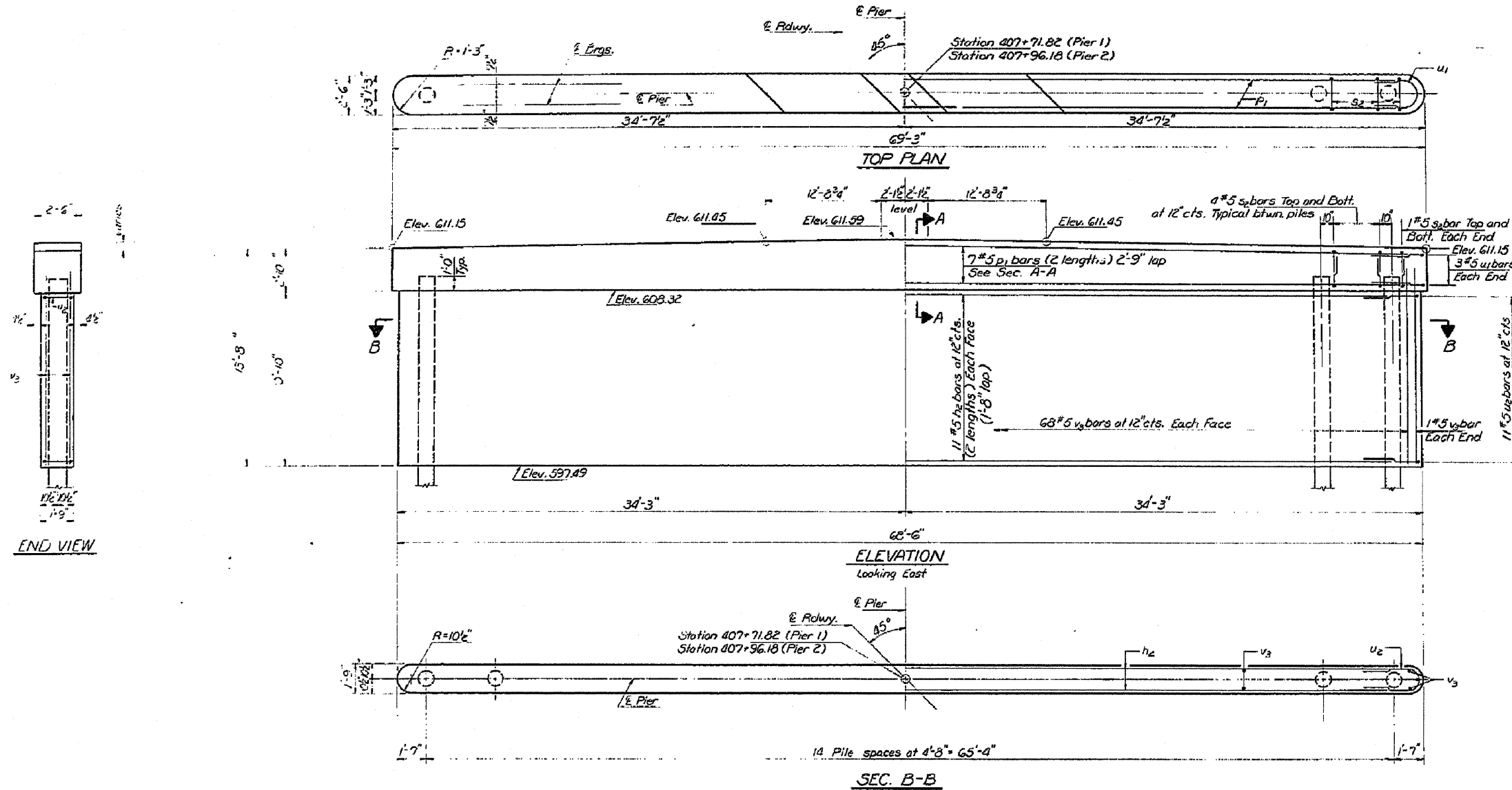


STATE OF ILLINOIS  
DEPARTMENT OF TRANSPORTATION

ROUTE NO.	SECTION	COUNTY	TOTAL SHEETS	SHEET NO.	SHEET NO. 7
158R-3	LIVINGSTON	59	43	8	SHEETS



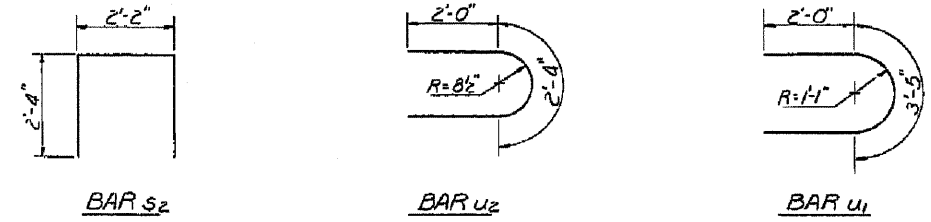
PIERS 1 and 2  
BILL OF MATERIAL

Bar	No	Size	Length	Shape
h2	88	#5	34'-1"	—
p1	28	#5	34'-0"	—
s2	232	#5	6'-10"	□
u1	12	#5	7'-5"	⊃
u2	23	#5	6'-8"	⊃
v3	276	#5	12'-3"	—
Class X Concrete		Cu. Yd.	117.0	
Reinforcement Bars		Pound	9680	
Concrete Piles		Lin. Ft.	580	
Test Piles (Concrete)		Each	1	

**PILE DATA**

14  
 15  
 20  
 14 plus 1 test pile placed in a permanent location at Pier 2  
 15 piles at Pier 1

14" Precast Concrete Piles set in 4" precast tubes drilled to elevation 597.49, then driven



DESIGNED	EXAMINED
CHECKED	PASSED
DRAWN	APPROVED
CHECKED	

PIERS 1 and 2  
F.A. RT. 41 SEC. 15 BR-3  
LIVINGSTON COUNTY  
STATION 47+84.00