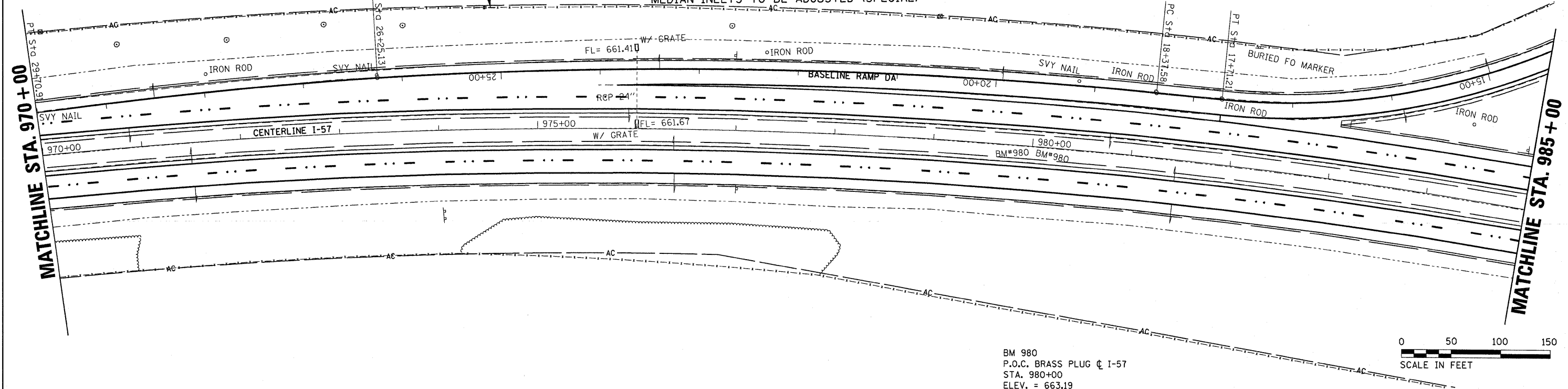
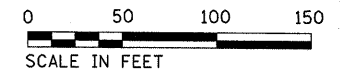


STA 976+00 NB
 24"X66' RCCP WITH INLET BOX EACH END
 NB-REMOVE INLET BOX
 -EXTEND 24" RCP - 3'
 -INSTALL INLET BOX
 MEDIAN-INLETS TO BE ADJUSTED (SPECIAL)

FENCE REPAIR - 20'
 STA 974+40 TO
 STA 974+60

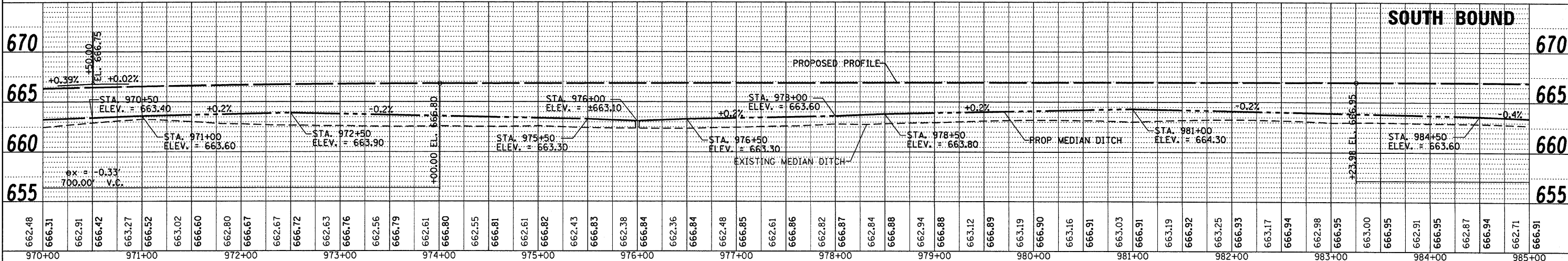
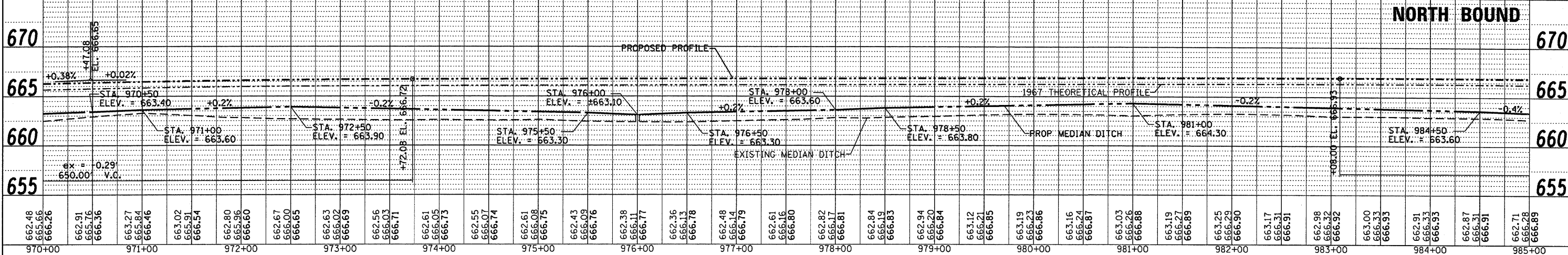


BM 980
 P.O.C. BRASS PLUG @ I-57
 STA. 980+00
 ELEV. = 663.19



PLAN	DATE
NO.	BY
NO.	BY
NO.	BY
NO.	BY
NO.	BY

PROFILE	DATE
NO.	BY
NO.	BY
NO.	BY
NO.	BY
NO.	BY



FILE NAME =	USER NAME = duncanbd	DESIGNED -	REVISED -	STATE OF ILLINOIS DEPARTMENT OF TRANSPORTATION	PLAN & PROFILE		F.A.I. RTE.	SECTION	COUNTY	TOTAL SHEETS	SHEET NO.	
c:\pwork\PIWIDOT\DUNCANBD\dms30392\ep05	05-ahp-plnprf-main.dgn	CHECKED -	REVISED -		57	(38-1,2)RS-2 & I	IROQUOIS	263	26			
		DRAWN -	REVISED -		SCALE: 1=50		SHEET NO. 5 OF 18 SHEETS		STA. 970+00 TO STA. 985+00		CONTRACT NO. 66981	
		CHECKED -	REVISED -		ILLINOIS FED. AID PROJECT							