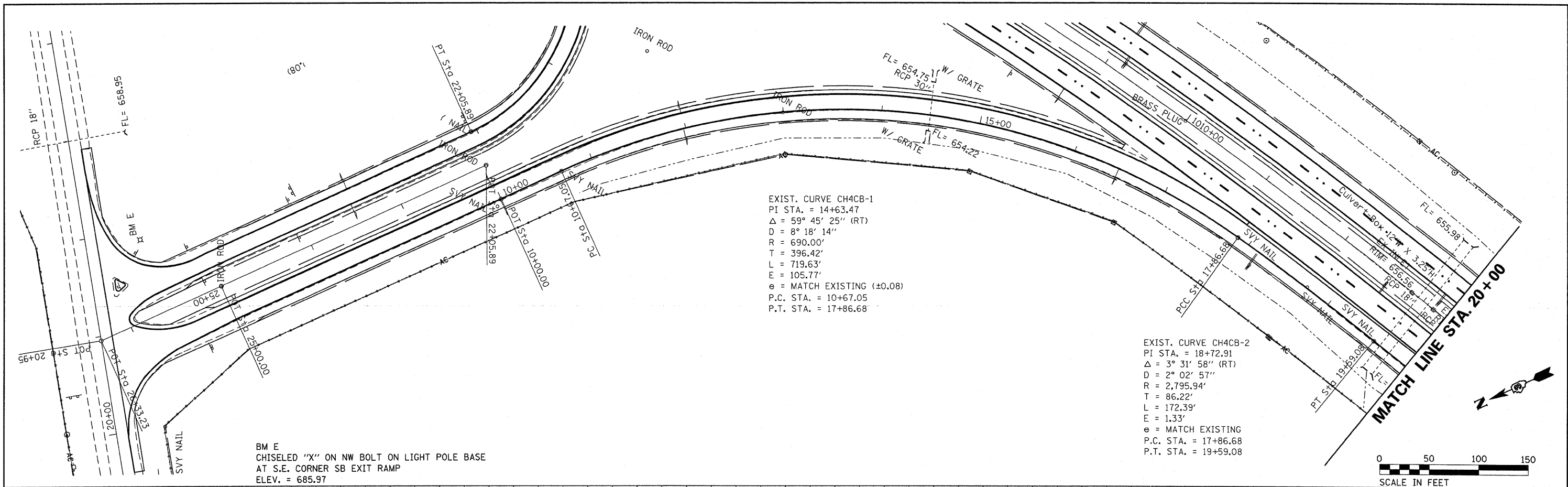


PLAN	SURVEYED	DATE
	ALIGNED	BY
	CHECKED	
	NO. _____	
	DATE _____	

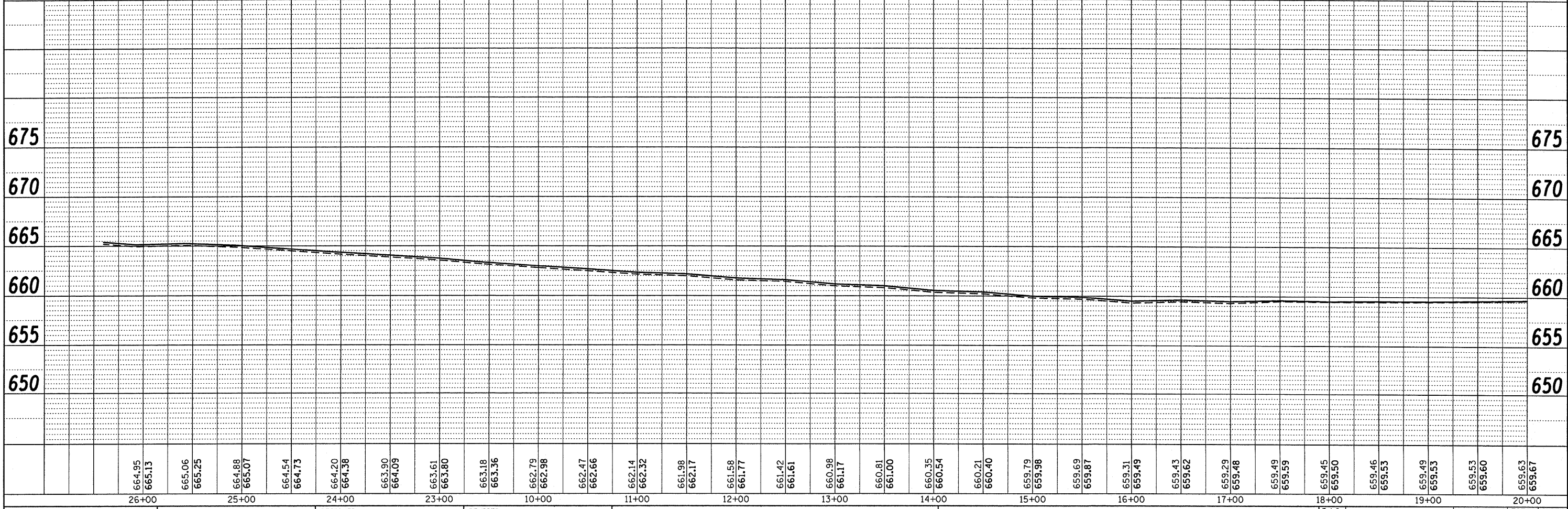
PROFILE	SURVEYED	DATE
	GRADES CHECKED	BY
	STRUCTURE NOTATIONS CHECKED	
	NO. _____	
	DATE _____	



BM E
CHISELED "X" ON NW BOLT ON LIGHT POLE BASE
AT S.E. CORNER SB EXIT RAMP
ELEV. = 685.97

EXIST. CURVE CH4CB-1
PI STA. = 14+63.47
Δ = 59° 45' 25" (RT)
D = 8° 18' 14"
R = 690.00'
T = 396.42'
L = 719.63'
E = 105.77'
e = MATCH EXISTING (±0.08)
P.C. STA. = 10+67.05
P.T. STA. = 17+86.68

EXIST. CURVE CH4CB-2
PI STA. = 18+72.91
Δ = 3° 31' 58" (RT)
D = 2° 02' 57"
R = 2,795.94'
T = 86.22'
L = 172.39'
E = 1.33'
e = MATCH EXISTING
P.C. STA. = 17+86.68
P.T. STA. = 19+59.08



FILE NAME =	USER NAME = duncanbd	DESIGNED -	REVISED -	STATE OF ILLINOIS DEPARTMENT OF TRANSPORTATION	RAMP CB PLAN & PROFILE	F.A.I. RTE.	SECTION	COUNTY	TOTAL SHEETS	SHEET NO.	
01:\pw_work\PIWIDD\T\DUNCANBD\dms30392\ep05	05-shr-plnprf-rampCB.dgn	DRAWN -	REVISED -			57	(38-1,2)RS-2&I	IROOUIOS	263	42	
		CHECKED -	REVISED -			CONTRACT NO. 66981					
		DATE -	REVISED -			ILLINOIS FED. AID PROJECT					