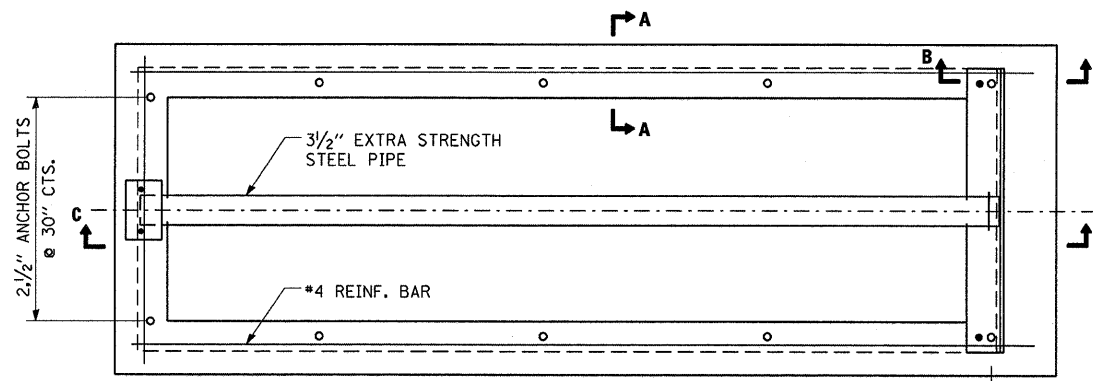
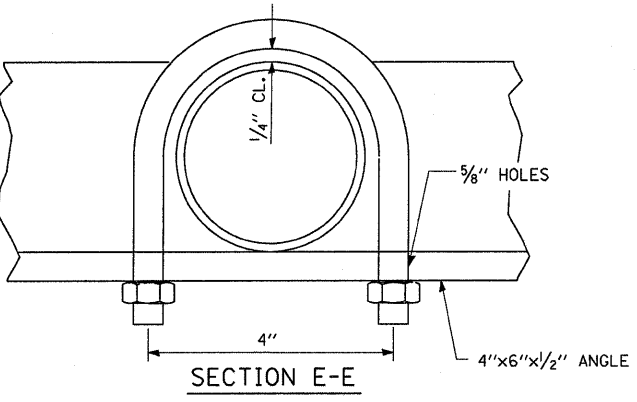
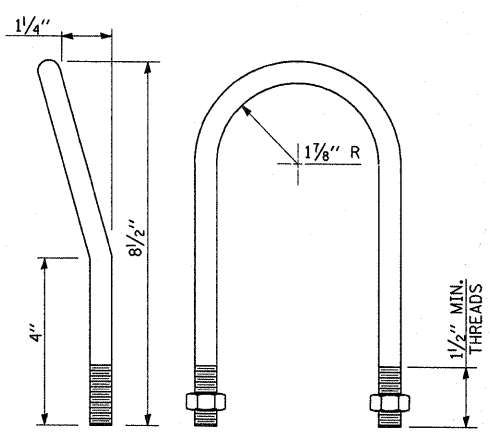
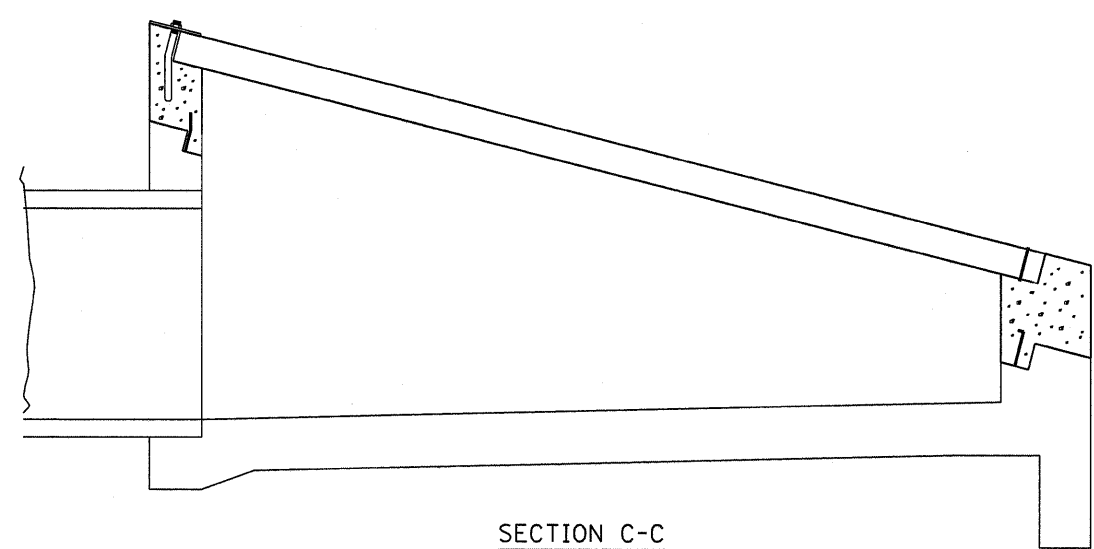


**DETAIL AT BLOCKOUTS**



**PLAN VIEW**

**NOTES**

- ALL DIMENSIONS ARE IN INCHES UNLESS OTHERWISE SHOWN.
- ALL BOLTS SHALL BE TACK WELDED IN FINAL POSITION.
- ALL BOLTS AND ANCHOR BOLTS SHALL BE IN ACCORDANCE WITH ARTICLE 1006.08 AND 1006.09.
- STEEL PIPE SHALL BE IN ACCORDANCE WITH ARTICLE 1006.18.
- IT SHALL BE THE CONTRACTOR'S RESPONSIBILITY TO VERIFY DIMENSIONS IN THE FIELD AND MAKE NECESSARY APPROVED ADJUSTMENTS PRIOR TO CONSTRUCTION OR ORDERING MATERIALS.
- CLASS SI CONCRETE SHOULD BE USED THROUGHOUT.
- SEE SPECIAL PROVISIONS FOR INLETS TO BE ADJUSTED, SPECIAL.
- ALL MATERIALS SPECIFIED ARE INCIDENTAL TO INLETS TO BE ADJUSTED, SPECIAL.

**INLETS TO BE ADJUSTED (SPECIAL)**

FILE NAME =	USER NAME = duncanbd	DESIGNED -	REVISED -	<b>STATE OF ILLINOIS DEPARTMENT OF TRANSPORTATION</b>	<b>DETAILS</b>			F.A.I. RTE.	SECTION	COUNTY	TOTAL SHEETS	SHEET NO.
ca:\pwwork\p\WID0T\duncanbd\dms30392\ep	5185-sht-details.DGN	DRAWN -	REVISED -		57	(38-1,2)RS-2 & I	IROQUOIS	263	64			
	PLOT SCALE = 50,0000 / IN.	CHECKED -	REVISED -					CONTRACT NO. 66981				
	PLOT DATE = Oct 21, 2009 - 08:37:29 AM	DATE -	REVISED -		SCALE:	SHEET NO.	OF	SHEETS	STA.	TO	STA.	ILLINOIS FED. AID PROJECT