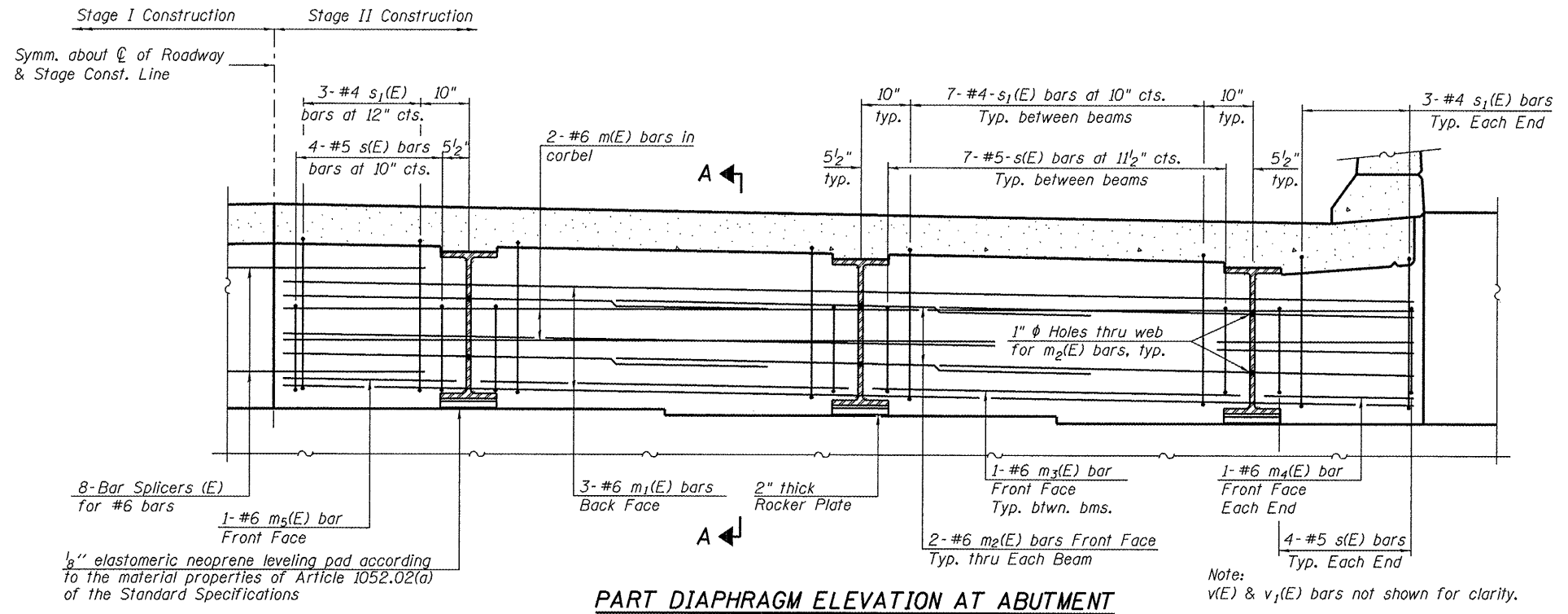
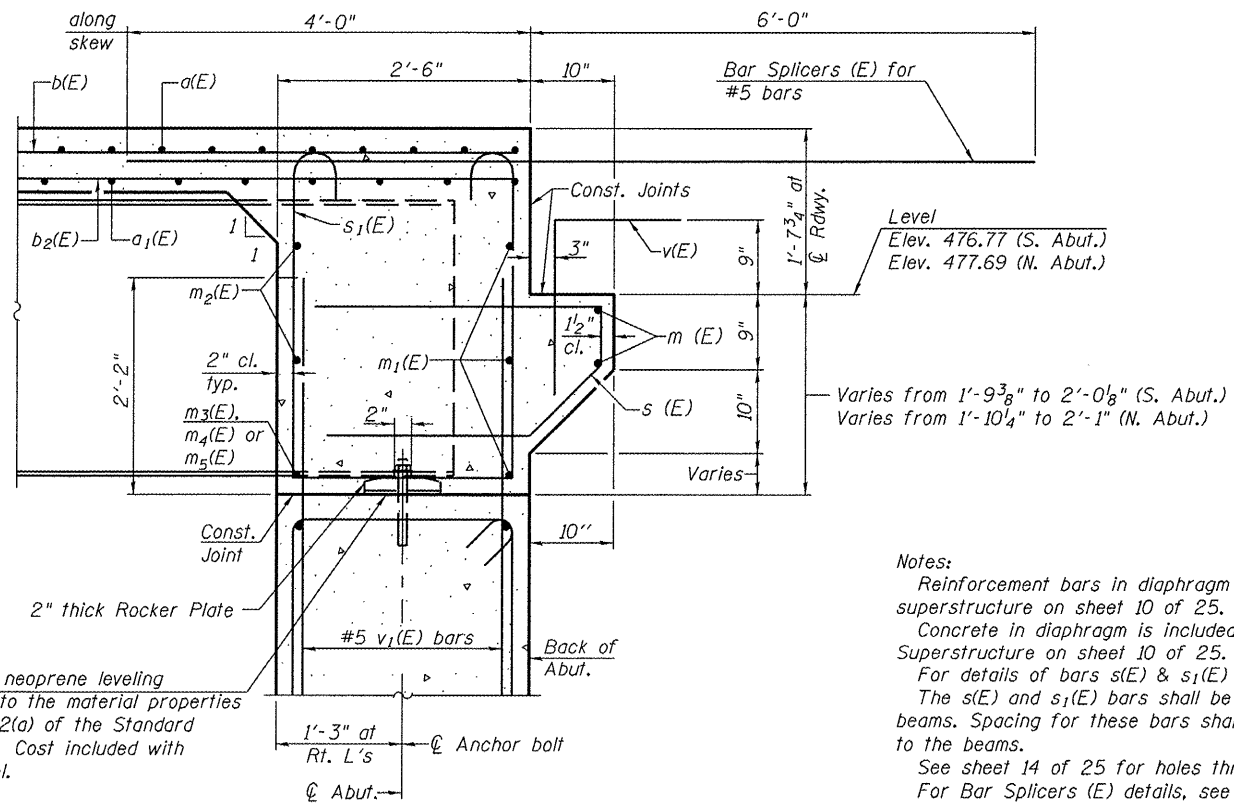


STATE OF ILLINOIS
DEPARTMENT OF TRANSPORTATION



PART DIAPHRAGM ELEVATION AT ABUTMENT

Note:
v(E) & v1(E) bars not shown for clarity.



1/8" elastomeric neoprene leveling pad according to the material properties of Art. 1052.02(a) of the Standard Specifications. Cost included with Structural Steel.

Notes:
Reinforcement bars in diaphragm are billed with superstructure on sheet 10 of 25.
Concrete in diaphragm is included with Concrete Superstructure on sheet 10 of 25.
For details of bars s(E) & s1(E) see sheet 10 of 25.
The s(E) and s1(E) bars shall be placed parallel to the beams. Spacing for these bars shall be at right angles to the beams.
See sheet 14 of 25 for holes thru web for m2(E) bars.
For Bar Splicers (E) details, see sheet 21 of 25.

SECTION A-A

Dimensions at right angles to abutment, except as shown.

MIN. BAR LAP

#6 bar = 2'-9"

DESIGNED CTW
CHECKED SEC
DRAWN DP
CHECKED SEC

SI-DS1

10-1-08

**DIAPHRAGM DETAILS
STRUCTURE NO. 102-0068**

SHEET NO. 11		EFK Moen, LLC Civil Engineering Design		331 Salem Place Suite 225 Fairview Heights, IL 62208		Phone 618-206-4250 Fax 618-206-4253	
		F.A.S. RTE.	SECTION	COUNTY	TOTAL SHEETS	SHEET NO.	
26 SHEETS		2370	29BR-1	WOODFORD	76	33	
		CONTRACT NO. 68466					
		ILLINOIS		FED. AID PROJECT			