

STATE OF ILLINOIS
DEPARTMENT OF TRANSPORTATION
DIVISION OF HIGHWAYS

**PROPOSED
HIGHWAY PLANS**
F.A.S. ROUTE 1517 (US 150)
SECTION 12VBR-1
PROJECT ACBRM-1517(III)
US 150 OVER NSRR IN MANSFIELD
PIATT COUNTY
C-95-032-04

F.A.S. RTE.	SECTION	COUNTY	TOTAL SHEETS	SHEET NO.
1517	12VBR-1	PIATT	168	1
FED. ROAD DIST. NO.	ILLINOIS	CONTRACT NO. 70388		

FOR INDEX OF SHEETS, SEE SHEET NO. 2
FOR SUMMARY OF QUANTITIES, SEE SHEET NO. 6-10

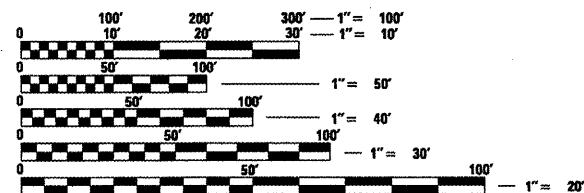
CURRENT TRAFFIC DATA

F. A. S. ROUTE 1517 (US 150)

2009 ADT = 1,550
PV % = 93.5
SU % = 5.2
MU % = 1.3

DESIGN DESIGNATION

RURAL MAJOR COLLECTOR



FULL SIZE PLANS HAVE BEEN PREPARED USING STANDARD ENGINEERING SCALES. REDUCED SIZED PLANS WILL NOT CONFORM TO STANDARD SCALES. IN MAKING MEASUREMENTS ON REDUCED PLANS, THE ABOVE SCALES MAY BE USED.

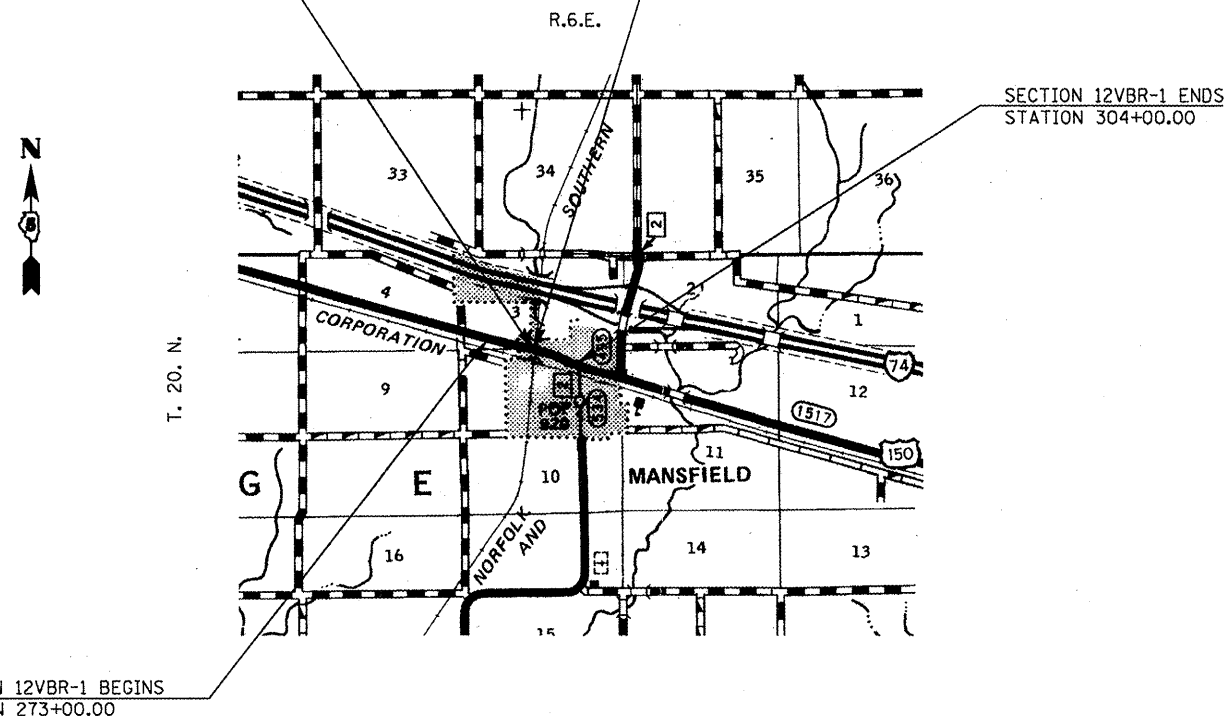
J.U.L.E.
JOINT UTILITY LOCATION INFORMATION FOR EXCAVATION
1-800-892-0123
OR 811

PROJECT ENGINEER: KEVIN TRAPP
SQUAD LEADER: JEFF M. SHERER

PHONE: 217-465-4181
CONTRACT NO. 70388

EXIST. S.N. 074-0009 STA. 289+23.00
5 SPAN PPC DECK BEAMS ON
SPILL-THRU COUNTER-FORT
ABUTMENTS AND MULTI-COLUMN
PIERS

PROP. S.N. 074-0086 STA. 289+22.38
CONTINUOUS STEEL BEAM BRIDGE
3 SPAN W/ INTEGRAL ABUTMENTS
SKEW 9°-42'-41" RT FORWARD



TOTAL LENGTH OF SECTION & PROJECT = 3,100.00 FEET = 0.587 MILES
NET LENGTH OF SECTION & PROJECT = 3,100.00 FEET = 0.587 MILES



STATE OF ILLINOIS
DEPARTMENT OF TRANSPORTATION
DIVISION OF HIGHWAYS

SUBMITTED 10/20 2009
Jason E. Gowen
DEPUTY DIRECTOR OF HIGHWAYS, REGION 3 ENGINEER

December 4, 2009
Charles J. Ingersoll
ENGINEER OF DESIGN AND ENVIRONMENT

December 4, 2009
Christine M. Reed
DIRECTOR OF HIGHWAYS, CHIEF ENGINEER

**PRINTED BY THE AUTHORITY
OF THE STATE OF ILLINOIS**