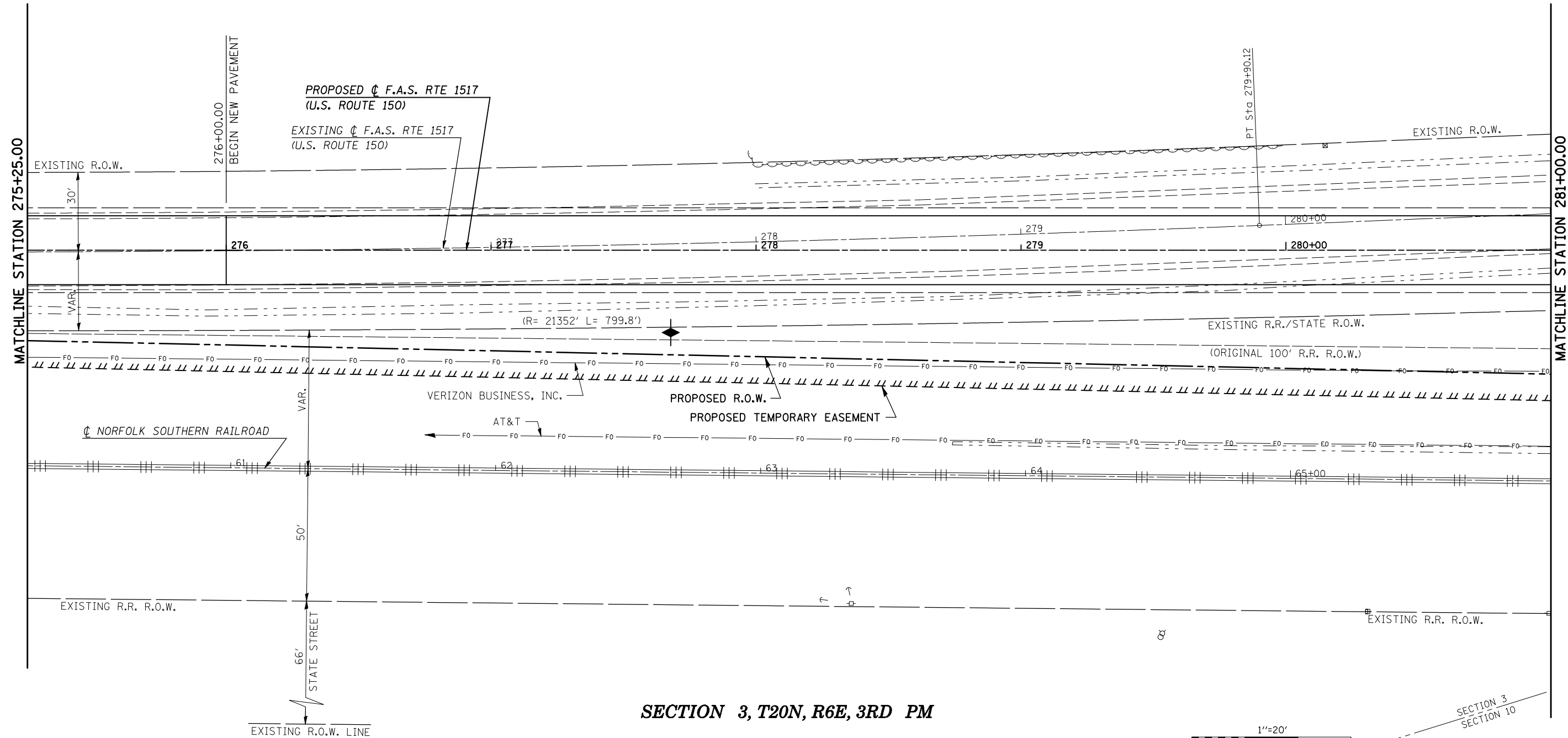


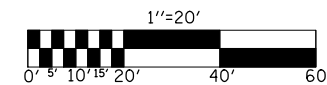
SEE SCHEDULES OF REMOVAL SHEET(S) 51-52  
 SEE SCHEDULES OF EROSION CONTROL SHEET(S) 59  
 SEE SCHEDULES OF DRAINAGE SHEET(S) 68  
 SEE GUARDRAIL DETAILS SHEET(S) 72

**SECTION 3, T20N, R6E, 3RD PM**

EXIST. CURVE US 150  
 P.I. STA. = 276+75.42  
 $\Delta = 2^\circ 54' 42''$  (LT)  
 $D = 0^\circ 27' 45''$   
 $R = 12,387.92'$   
 $T = 314.83'$   
 $L = 629.53'$   
 $E = 4.00'$   
 $e = \text{-----}$   
 $T.R. = \text{-----}$   
 $S.E. RUN = \text{-----}$   
 P.C. STA. = 273+60.59  
 P.T. STA. = 279+90.12



**SECTION 3, T20N, R6E, 3RD PM**



SECTION 3  
 SECTION 10

FILE NAME = ct:\pw\work\PIWID01\SHERERJM\dms86674\70388plansheets.dgn	USER NAME = shererjm	DESIGNED - CMS	REVISED -	<b>STATE OF ILLINOIS DEPARTMENT OF TRANSPORTATION</b>	<b>PLAN (U.S. ROUTE 150)</b>			F.A.S. RTE. 1517	SECTION 12VBR-1	COUNTY PIATT	TOTAL SHEETS 168	SHEET NO. 20
	PLOT SCALE = 40.0000' / IN.	CHECKED -	REVISED -		SCALE: 1" = 20'	SHEET NO. 3 OF 12 SHEETS	STA. 275+25.00 TO STA. 281+00.00	CONTRACT NO. 70388				
	PLOT DATE = 10/13/2009	DATE - 03-25-2008	REVISED -		FED. ROAD DIST. NO. ILLINOIS FED. AID PROJECT							