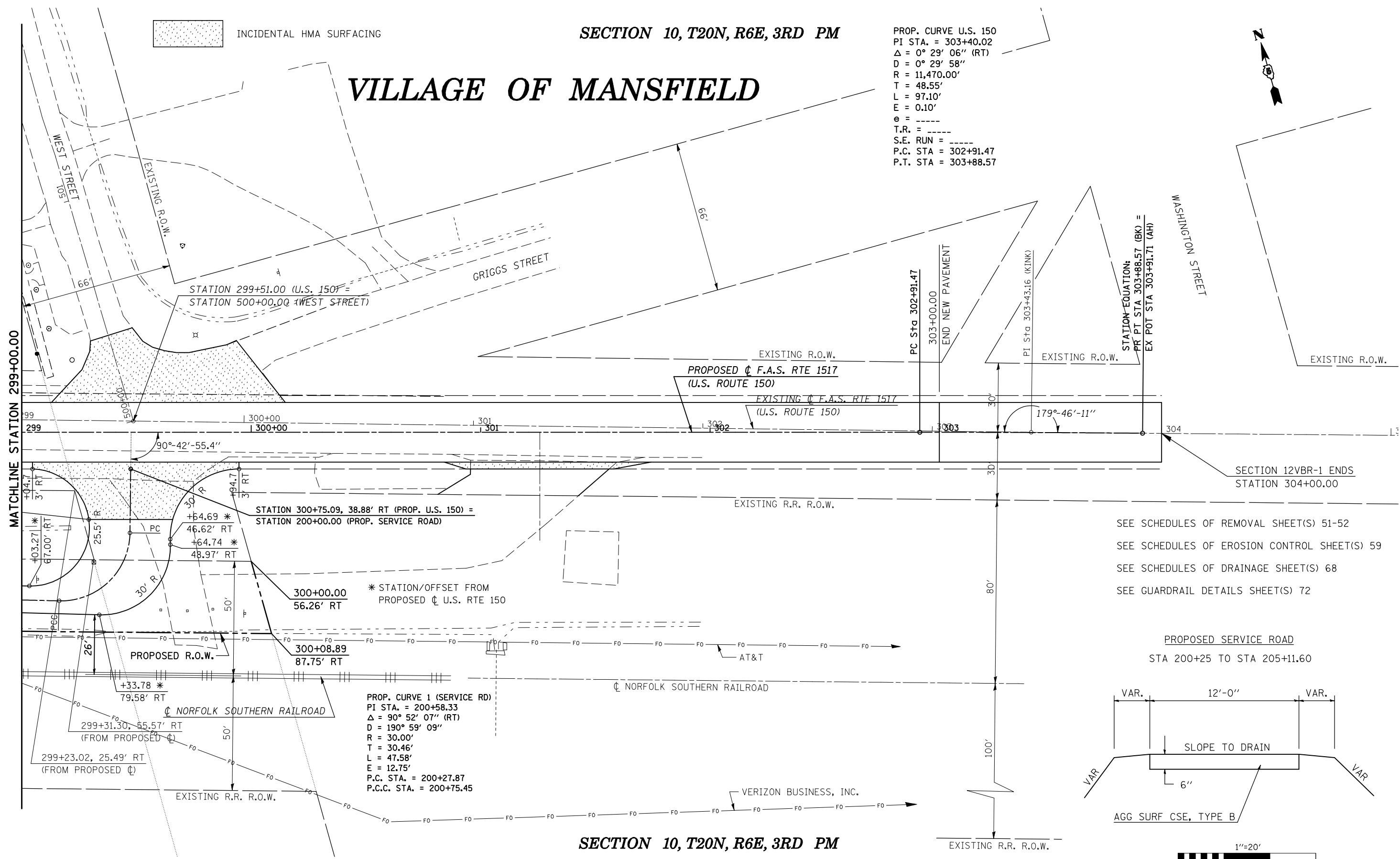


SECTION 10, T20N, R6E, 3RD PM

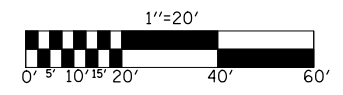
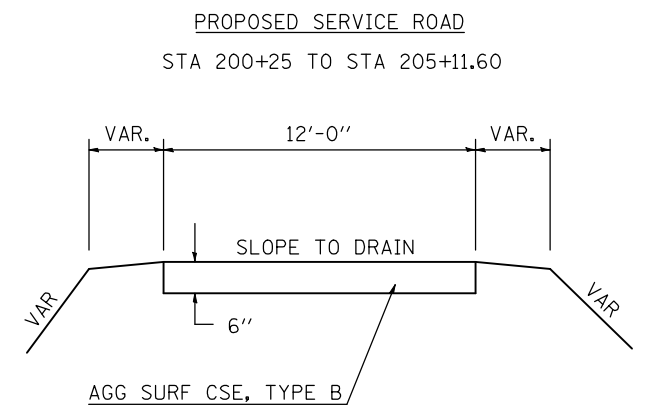
VILLAGE OF MANSFIELD

PROP. CURVE U.S. 150
 PI STA. = 303+40.02
 $\Delta = 0^\circ 29' 06''$ (RT)
 $D = 0^\circ 29' 58''$
 $R = 11,470.00'$
 $T = 48.55'$
 $L = 97.10'$
 $E = 0.10'$
 $e = \text{-----}$
 $T.R. = \text{-----}$
 $S.E. \text{ RUN} = \text{-----}$
 P.C. STA = 302+91.47
 P.T. STA = 303+88.57

INCIDENTAL HMA SURFACING



SEE SCHEDULES OF REMOVAL SHEET(S) 51-52
 SEE SCHEDULES OF EROSION CONTROL SHEET(S) 59
 SEE SCHEDULES OF DRAINAGE SHEET(S) 68
 SEE GUARDRAIL DETAILS SHEET(S) 72



SECTION 10, T20N, R6E, 3RD PM

FILE NAME =	USER NAME = shererjm	DESIGNED - CMS	REVISED -
ct:\pw\work\PIWID01\SHERRERJM\dms86674\70888plansheets.dgn		DRAWN - JRP	REVISED -
PLOT SCALE = 40.0000' / IN.		CHECKED -	REVISED -
PLOT DATE = 10/13/2009		DATE - 03-25-2008	REVISED -

STATE OF ILLINOIS
 DEPARTMENT OF TRANSPORTATION

PLAN (U.S. ROUTE 150)

SCALE: 1" = 20' SHEET NO. 11 OF 12 SHEETS STA. 299+00.00 TO STA. 305+00.00

F.A.S. RTE.	SECTION	COUNTY	TOTAL SHEETS	SHEET NO.
1517	12VBR-1	PIATT	168	28
CONTRACT NO. 70388				
FED. ROAD DIST. NO. ILLINOIS FED. AID PROJECT				