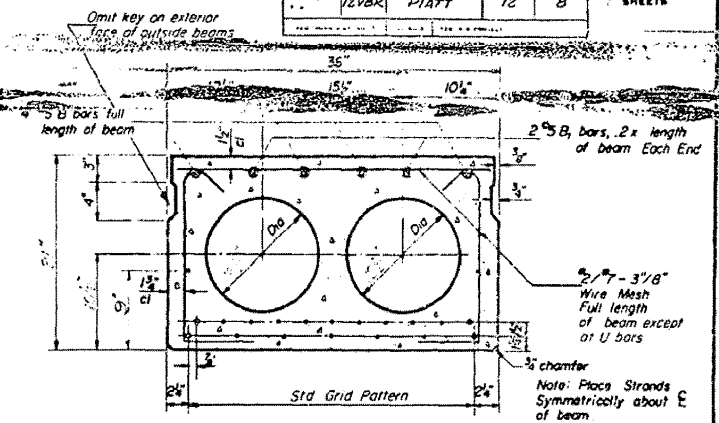
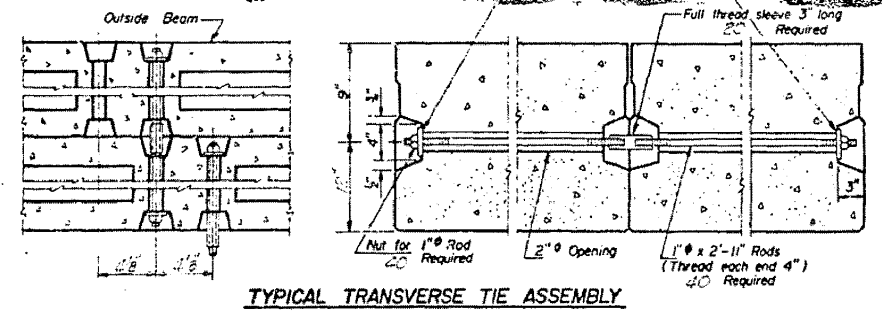
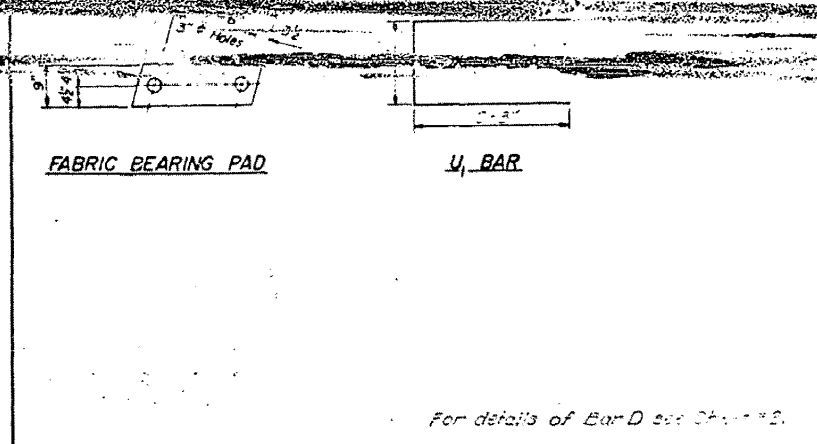


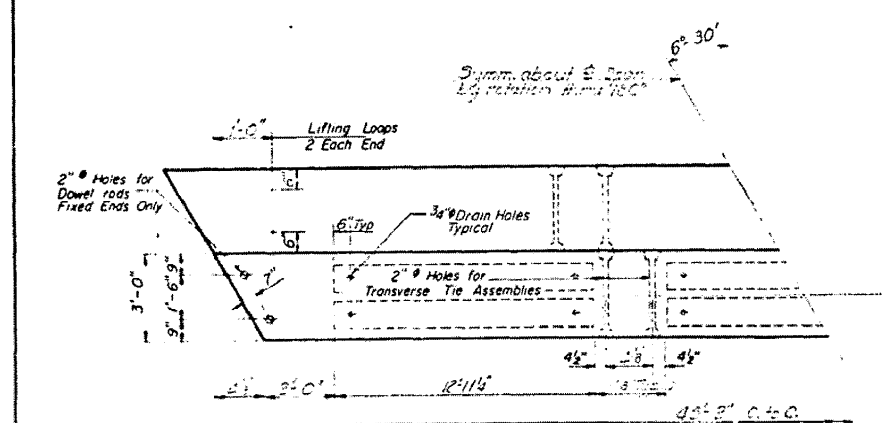
STATE OF ILLINOIS
DEPARTMENT OF TRANSPORTATION

PROJECT NO.	12VBR	PIATT	12	8	SHEET NO.	7	SHEETS
-------------	-------	-------	----	---	-----------	---	--------

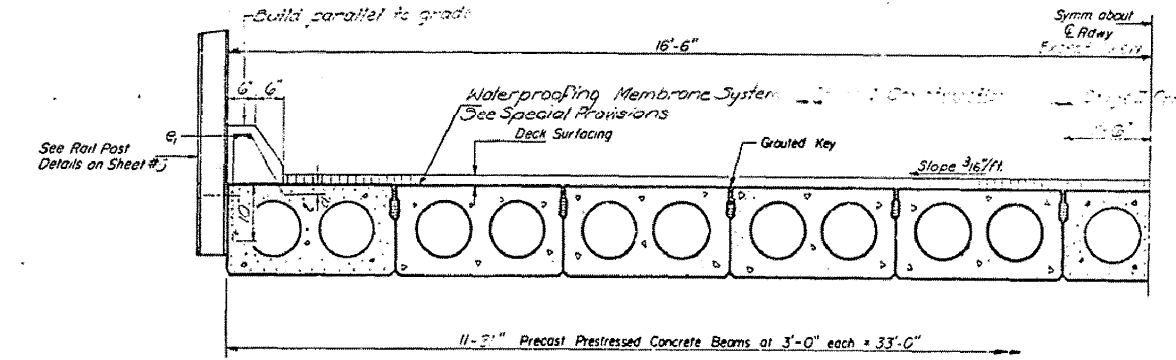


For details of Bar D see Sheet #3.

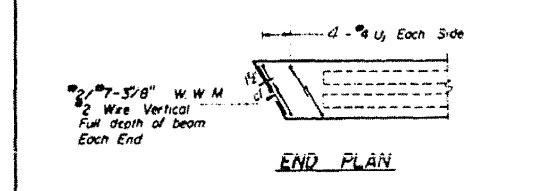
TYPICAL SECTION
 7/8" Strands Each Strand Stressed to 18,900 lbs.
 7" Strands 1 1/4" up 1" Strands 3/4" up 2" Strands 1 1/2" up



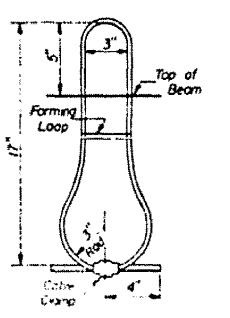
PLAN



HALF CROSS SECTION



END PLAN



LIFTING LOOP DETAIL

DESIGNED	EXAMINED	DATE	APPROVED
JMS	[Signature]	July 2 1971	[Signature]
CHECKED	PASSED		
DRAWN	APPROVED		
CHECKED	DIRECTOR OF HIGHWAYS		

BILL OF MATERIAL

Item	Quantity	Unit	Notes
Precast Prestressed Concrete Deck Beams		Sq. Ft.	

GENERAL NOTES

Prestressing steel shall be non-galvanized high strength, stress-relieved 7-wire strand. The nominal diameter shall be 7/8" and the nominal cross-sectional area shall be 0.109 sq in. Lifting loops shall be 1/2" diameter, 6 x 19 class wire rope with fiber core and shall have a minimum ultimate tensile strength of 22,000 lbs. The 1" rods in the transverse tie assembly shall be tightened to a snug fit and the threads set. Points that receive transverse tie bar on outside beam shall be filled with grout after transverse tie assembly is in place. Longitudinal shear keys shall be packed with a very dry mix of 2-1 sand and P.C. mortar. After beams have been erected, holes for the dowel anchors shall be drilled into the sub-structure and the anchor dowels shall be grouted in place. Dowel rods shall be ASTM A-306 or ASTM A-615. Transverse tie rods shall be ASTM A-306, Grade 70-80. After fabrication the transverse tie assemblies (tie rods, nuts, washers and sleeves) shall be hot-dipped galvanized in accordance with ASTM Designation A153. Cost of reinforcement and accessories cast into the beam, of bearing pads, of armor angles, and of grouting longitudinal shear keys is included in unit price bid for 'Precast Prestressed Concrete Deck Beams'.