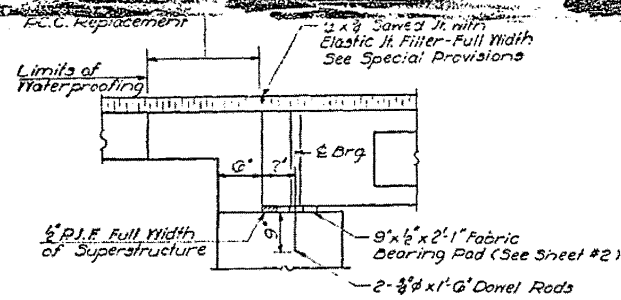
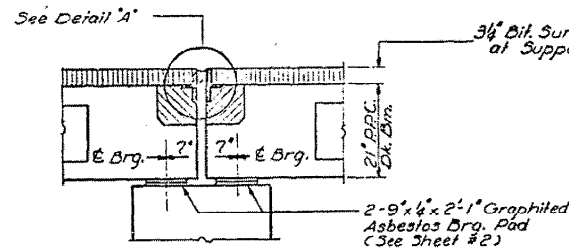


STATE OF ILLINOIS  
DEPARTMENT OF TRANSPORTATION

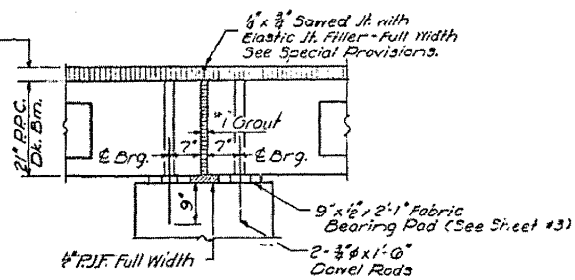
ROUTE NO.	SECTION	COUNTY	TOTAL SHEETS	SHEET NO.	SHEET NO.
39	12VBR	PIATT	12	9	7 SHEETS
FILE NAME	DATE	PROJECT			



SECTION THRU ABUT.

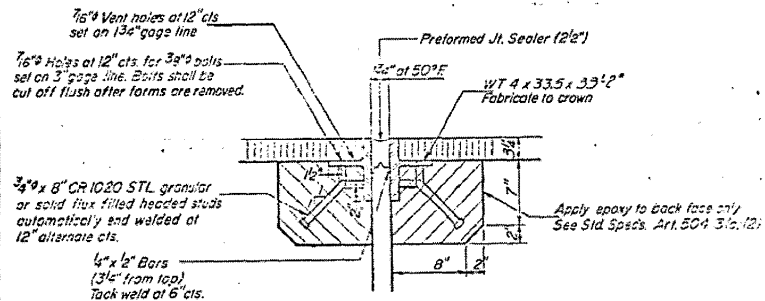


SECTION THRU PIERS 1 & 4



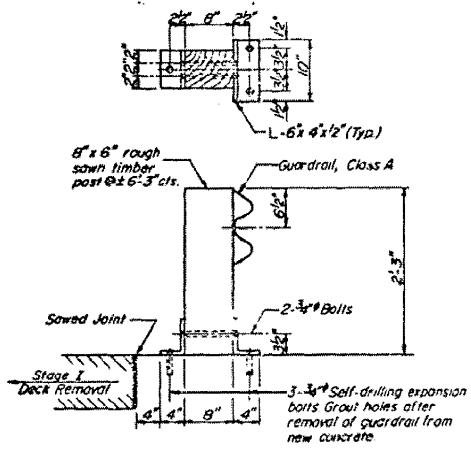
SECTION THRU PIERS 2 & 3

\* 1" Joint shall be packed with a very dry mix of 6:1 sand and P.C. mortar. This dimension may vary plus or minus to accommodate tolerance in beam lengths.



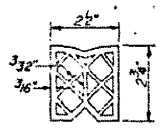
DETAIL "A"

NOTE: Dimensions are at right angles.  
Hatched areas to be poured after beams have been erected and joints grouted.  
Ends of beams shall be aligned at the expansion joints. Any linear variation in the beam lengths shall be placed at the fixed joint. See End of Beam Detail for reinforcement.

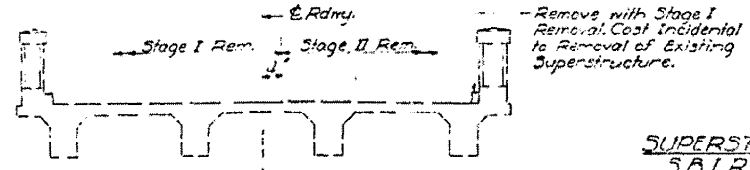


TEMPORARY GUARDRAIL DETAIL

See Special Provisions



PREFORMED JOINT SEALER (2'x2')



EXISTING CROSS SECTION

SUPERSTRUCTURE DETAILS  
S.B.I.R.T. 39 30C. 12VBR  
PIATT COUNTY  
STA. 269+23

DESIGNED	EXAMINED
CHECKED	PASSED
DRAWN	APPROVED
CHECKED	DIRECTOR OF HIGHWAYS