

Bench Mark: Chiseled square on top of the southwest wingwall, 17.65' Rt. at Station 288+13. Elevation = 755.435

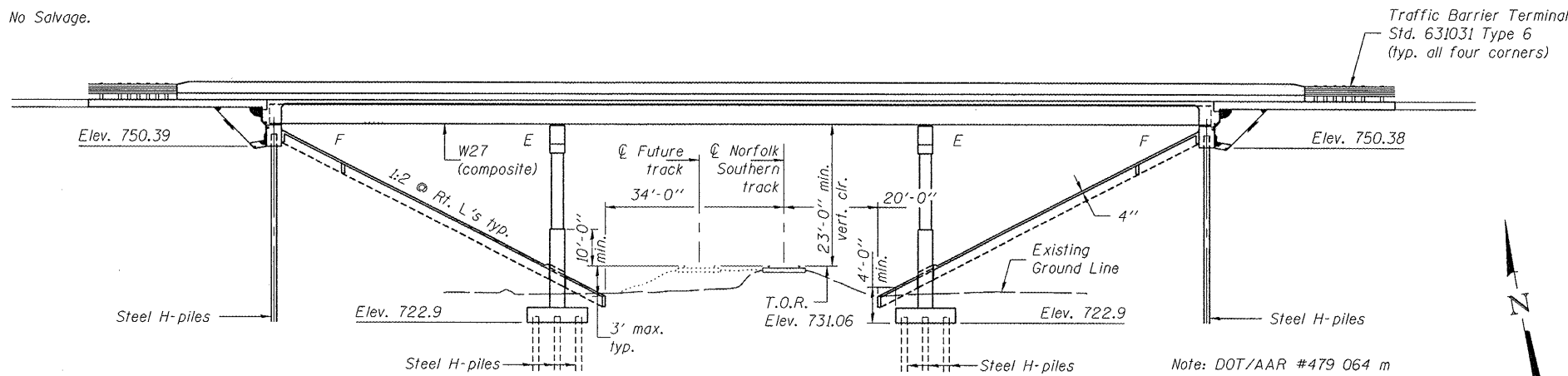
Existing Structure: S.N. 074-0009 built in 1928 as S.B.I. Route 39, Section 12V at Sta. 289+23.00. Superstructure replaced in 1975 as S.B.I. Route 39, Section 12VBR. Structure consists of five span PPC deck beams on spill-thru counter-fort abutments and multi-column piers. 218'-7" back-to-back abutments. 33'-0" out-to-out deck. SN 074-0086 to be built on new alignment approximately 49' south of existing bridge. Road closed and traffic detoured during construction.

No Salvage.

STATE OF ILLINOIS  
DEPARTMENT OF TRANSPORTATION

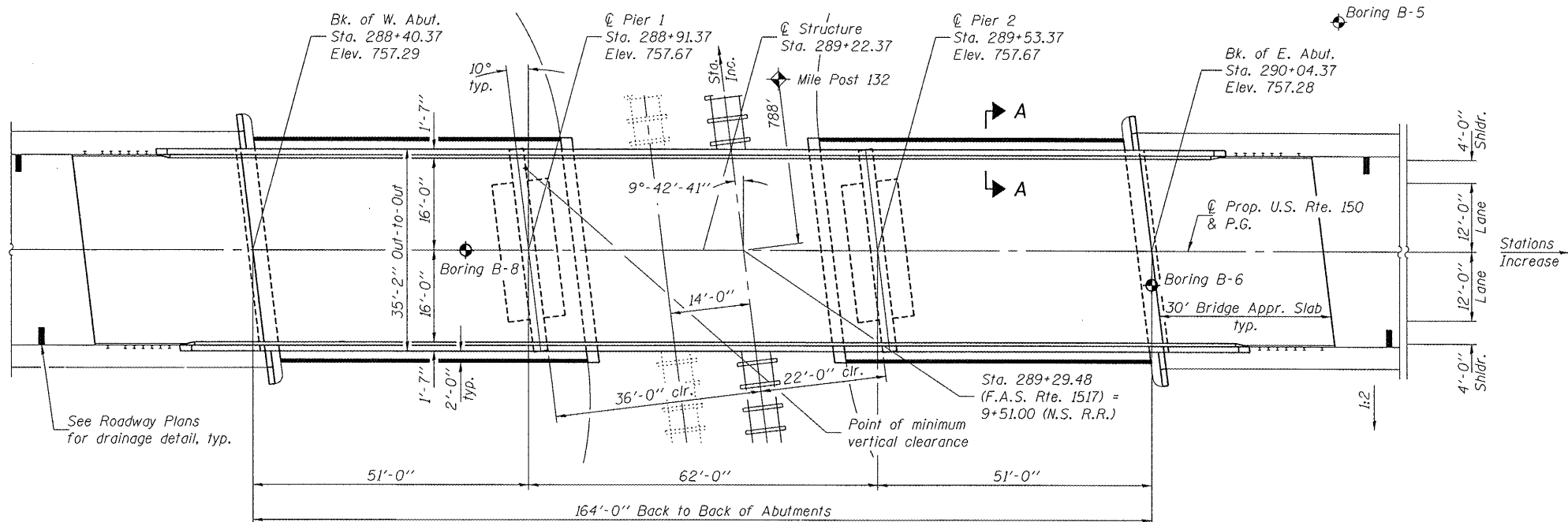
INDEX OF SHEETS

- 1 General Plan & Elevation
- 2 General Data
- 3 Reinforced Soil Slope Details
- 4-5 Top of Slab Elevations
- 6 Top of West Approach Pavement Elevation
- 7 Top of East Approach Pavement Elevation
- 8 Superstructure
- 9 Superstructure Details
- 10 Diaphragm Details
- 11-12 Bridge Approach Slab Details
- 13 Structural Steel
- 14 Structural Steel Details
- 15 Bearing Details
- 16 West Abutment
- 17 East Abutment
- 18 Pier 1
- 19 Pier 2
- 20 Cantilevered Forming Brackets for Superstructure with W27 Beams and Smaller
- 21 Bar Splicer Assembly Details
- 22 HP Pile Details
- 23-25 Soil Boring Logs



ELEVATION

Note: DOT/AAR #479 064 m

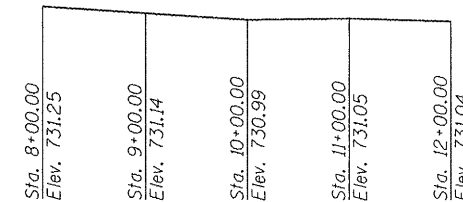
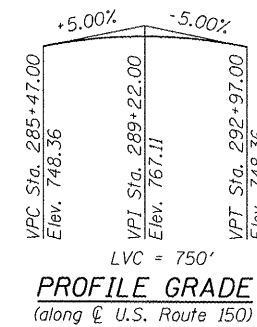


PLAN

See Roadway Plans for drainage detail, typ.

STATION 289+22.37  
BUILT 20 BY  
STATE OF ILLINOIS  
F.A.S. RTE. 1517 SEC. 12VBR-1  
LOADING HL-93  
STRUCTURE NO. 074-0086

NAME PLATE  
See Std. 515001



PROFILE GRADE  
(Top of Rail - Norfolk Southern R.R.)

Notes: The profile grade shows the final elevations after grinding. Up to 1/4" will be ground off the bridge slab, approach pavement and connector pavement.

LOADING HL-93  
Allow 50#/sq. ft. for future wearing surface.

DESIGN SPECIFICATIONS  
2007 LRFD AASHTO 4th Edition

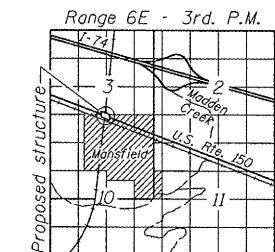
DESIGN STRESSES

FIELD UNITS

$f'_c = 3,500$  psi  
 $f_y = 60,000$  psi (reinforcement)  
 $f_y = 50,000$  psi (AASHTO M270 Grade 50W)

SEISMIC DATA

Seismic Performance Zone (SPZ) = 1  
Design Spectral Acceleration at 1.0 sec ( $S_{D1}$ ) = 0.10g  
Design Spectral Acceleration at 0.2 sec ( $S_{D5}$ ) = 0.17g  
Soil Site Class = C

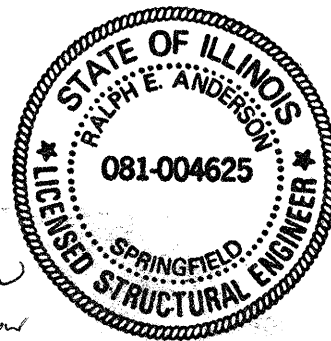


LOCATION SKETCH

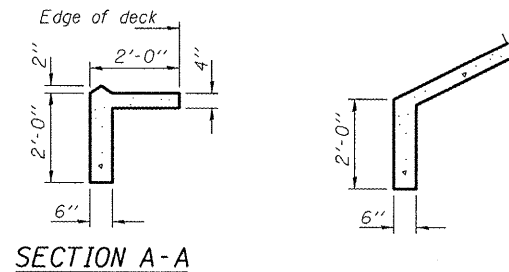
GENERAL PLAN & ELEVATION  
U.S. ROUTE 150 OVER  
NORFOLK SOUTHERN R.R.  
F.A.S. RTE. 1517 - SEC. 12VBR-1  
PIATT COUNTY  
STATION 289+22.37  
STRUCTURE NO. 074-0086

DESIGNED	Phum P. Naitelwala
CHECKED	Stephen M. Ryan
DRAWN	h.t. duong
CHECKED	SMR

November 25 2009  
EXAMINED: *[Signature]*  
PASSED: *[Signature]*  
ENGINEER OF BRIDGES AND STRUCTURES



EXPIRES 11-30-2010



SECTION A-A

SHEET NO. 1 25 SHEETS	F.A.S. RTE.	SECTION	COUNTY	TOTAL SHEETS	SHEET NO.
	1517	12VBR-1	PIATT	168	86
FED. ROAD DIST. NO. _			ILLINOIS	FED. AID PROJECT	
CONTRACT NO. 70388					